

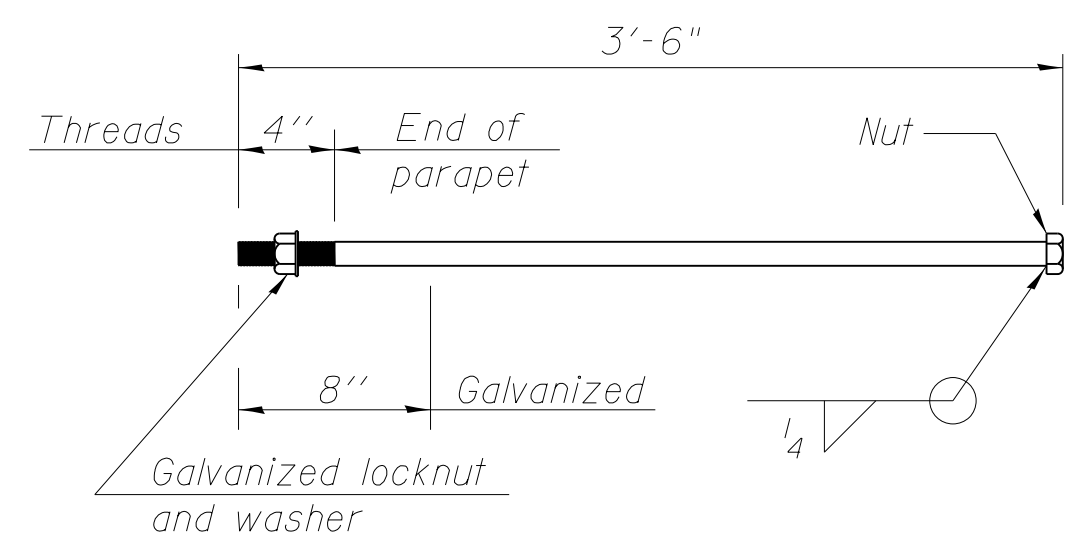
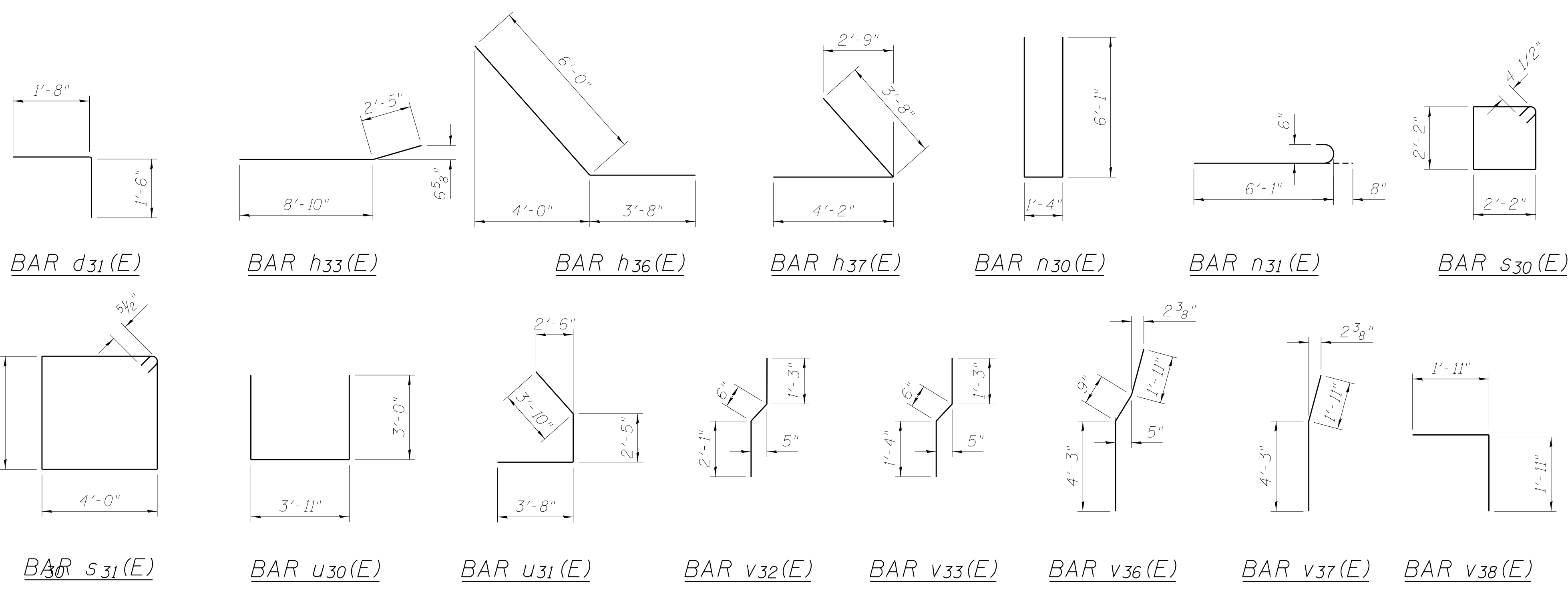
PILE DATA

Type: HP 12X53
 Nominal Required Bearing: 355 kips
 Allowable Resistance Available: 118 kips
 Est. Length: 43 Ft.
 No. Production Piles: 4
 No. Test Piles: 1

PILE LAYOUT

**ABUTMENT
BILL OF MATERIAL**

Bar	No.	Size	Length	Shape
d ₃₀ (E)	45	#5	2'-3"	—
d ₃₁ (E)	45	#5	3'-2"	└
h ₃₀ (E)	2	#5	31'-3"	—
h ₃₁ (E)	4	#6	29'-2"	—
h ₃₂ (E)	91	#4	12'-0"	—
h ₃₃ (E)	14	#4	11'-2"	—
h ₃₄ (E)	6	#5	6'-6"	—
h ₃₅ (E)	6	#5	8'-6"	—
h ₃₆ (E)	10	#5	7'-8"	—
h ₃₇ (E)	10	#5	7'-10"	—
h ₃₈ (E)	2	#5	24'-2"	—
h ₃₉ (E)	4	#6	23'-0"	—
h ₂₄₀ (E)	9	#4	10'-2"	—
h ₂₄₁ (E)	4	#4	11'-2"	—
n ₃₀ (E)	18	#6	13'-6"	—
n ₃₁ (E)	12	#6	6'-9"	—
p ₃₀ (E)	6	#7	7'-7"	—
p ₃₁ (E)	9	#7	8'-7"	—
p ₃₂ (E)	9	#7	12'-0"	—
p ₃₃ (E)	6	#7	11'-6"	—
p ₃₄ (E)	3	#7	31'-2"	—
p ₃₅ (E)	3	#7	25'-10"	—
p ₃₆ (E)	3	#7	3'-8"	—
s ₃₀ (E)	17	#5	16'-10"	—
s ₃₁ (E)	35	#4	9'-0 1/2"	—
u ₃₀ (E)	4	#6	9'-11"	—
u ₃₁ (E)	4	#6	9'-11"	—
v ₃₀ (E)	13	#4	6'-6"	—
v ₃₁ (E)	13	#4	5'-2"	—
v ₃₂ (E)	13	#4	3'-10"	—
v ₃₃ (E)	44	#4	3'-1"	—
v ₃₄ (E)	44	#4	2'-9"	—
v ₃₅ (E)	24	#6	6'-10"	—
v ₃₆ (E)	18	#6	6'-11"	—
v ₃₇ (E)	6	#6	6'-3"	—
v ₃₈ (E)	53	#4	3'-10"	└
Structure Excavation	Cu. Yd.		85	
Concrete Structures	Cu. Yd.		36.0	
Reinforcement Bars, Epoxy Coated	Pound		4240	
Furnishing Steel Piles HP12x53	Foot		172	
Driving Piles	Foot		172	
Test Pile Steel HP12x53	Each		1	
Concrete Encasement	Cu. Yd.		1.7	
Concrete Sealer	Sq. Ft.		401	

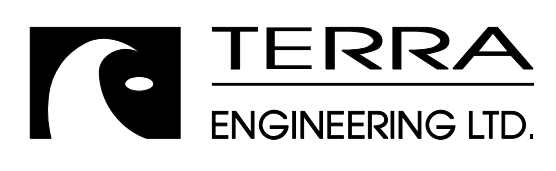


1"φ ANCHOR BOLT

VIEW D-D

For details of Bar Splicers, see sheet S64 of S71.
 For details of piles and Concrete Encasement, see sheet S65 of S71.

M:\1_57_OVER CNRR & ILLI 45\Drawings\Structural\Final Plans\SHTS\0366942-043-E-Abutment-SB.dgn



USER NAME =	DESIGNED - EA	REVISED
PLOT SCALE =	CHECKED - OY	REVISED
PLOT DATE	DRAWN - CM	REVISED
	CHECKED - JB	REVISED

**STATE OF ILLINOIS
DEPARTMENT OF TRANSPORTATION**

**EAST ABUTMENT - SOUTHBOUND SHEET 2
STRUCTURE NOS. 038 - 0013 & 0014**

SHEET NO. S43 OF S71 SHEETS

F.A.I. RTE.	SECTION	COUNTY	TOTAL SHEETS	SHEET NO.
57	38-2HVB, HVBR-1	IROQUOIS	146	82
CONTRACT NO. 66942				

ILLINOIS FED. AID PROJECT