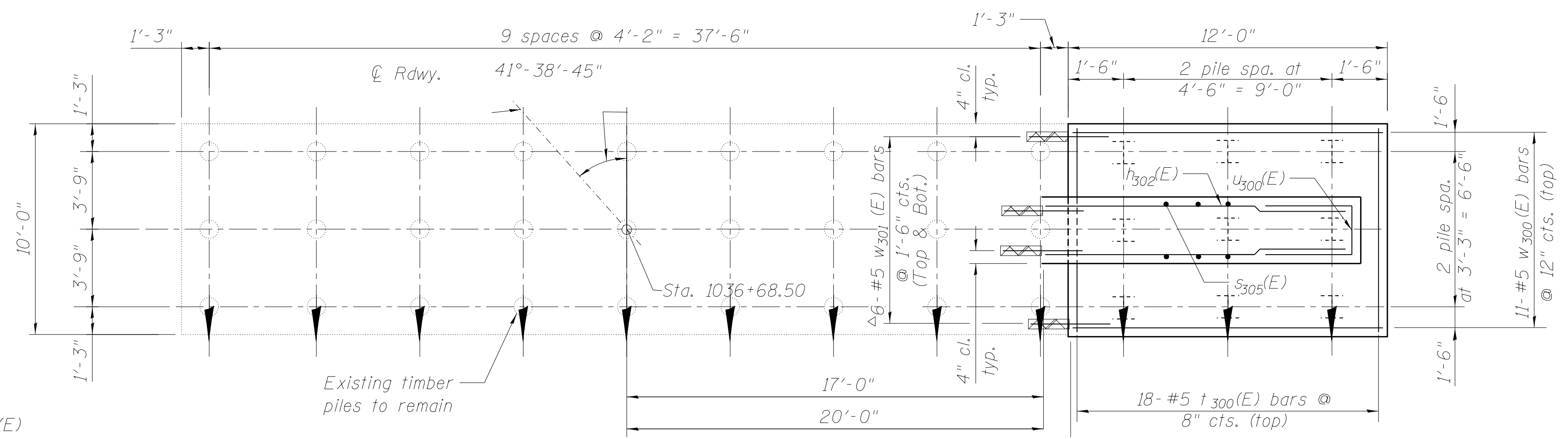
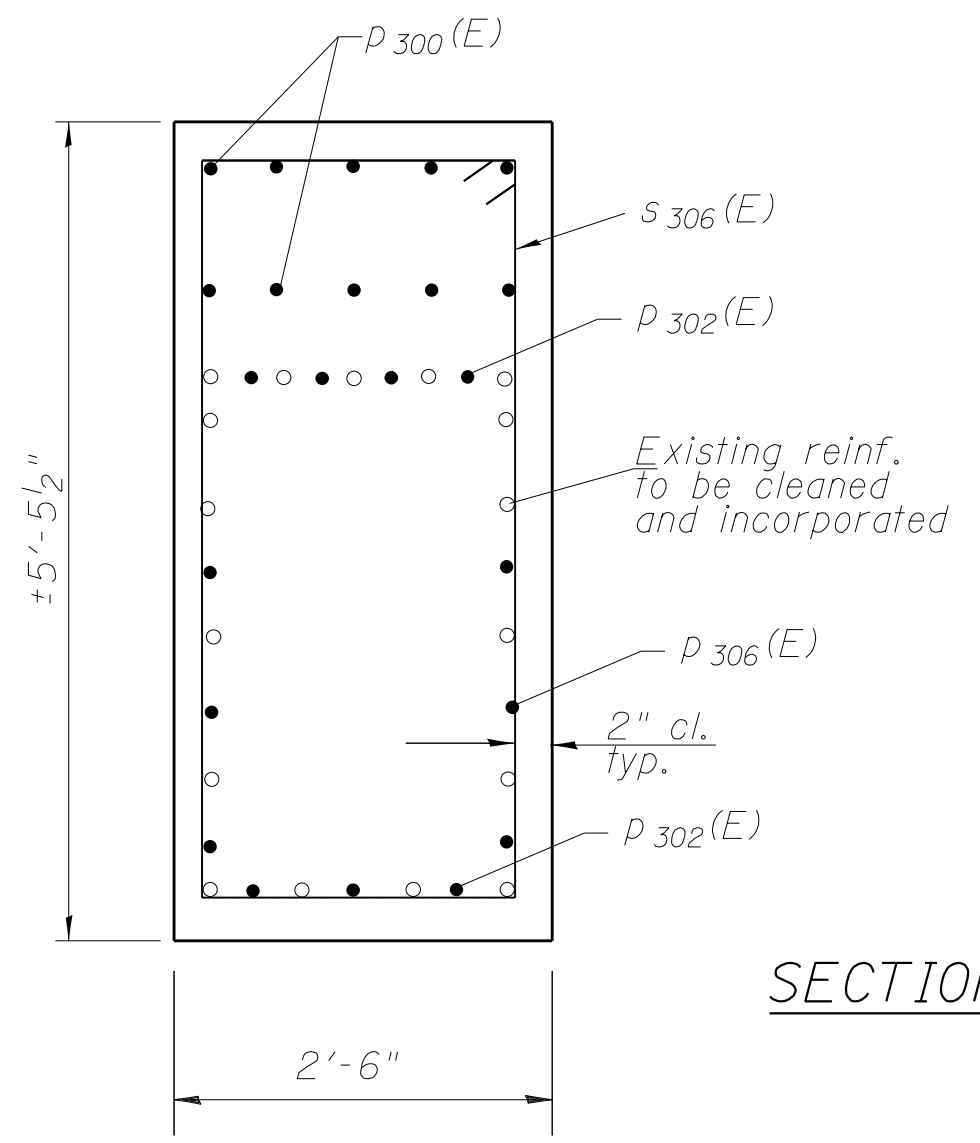


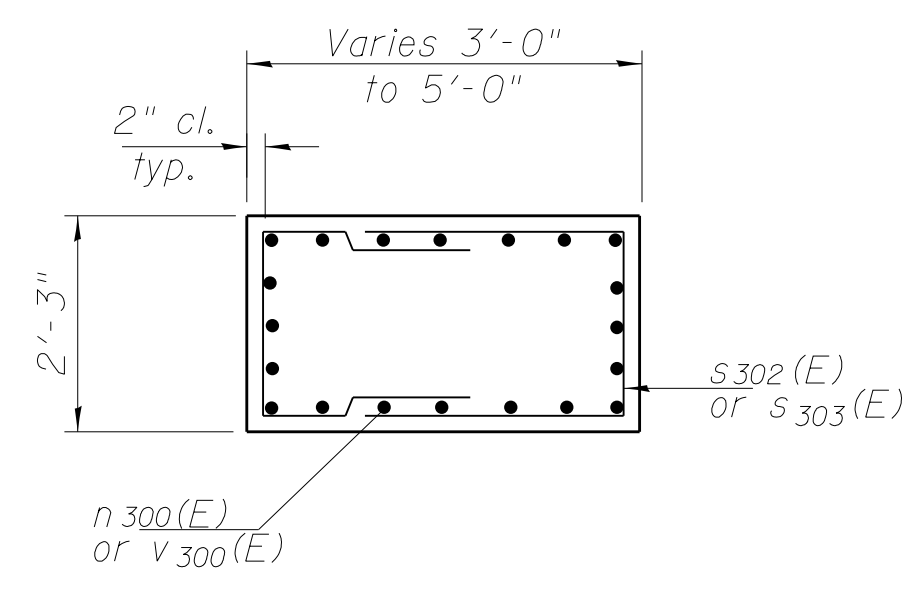
Notes:
 ΔEpoxy grout bars into 9" minimum drilled holes according to Section 584 of the Standard Specifications. Holes shall be approximately 4" from edge of existing member to avoid existing longitudinal reinforcement. Cost included in Reinforcement Bars, Epoxy Coated.



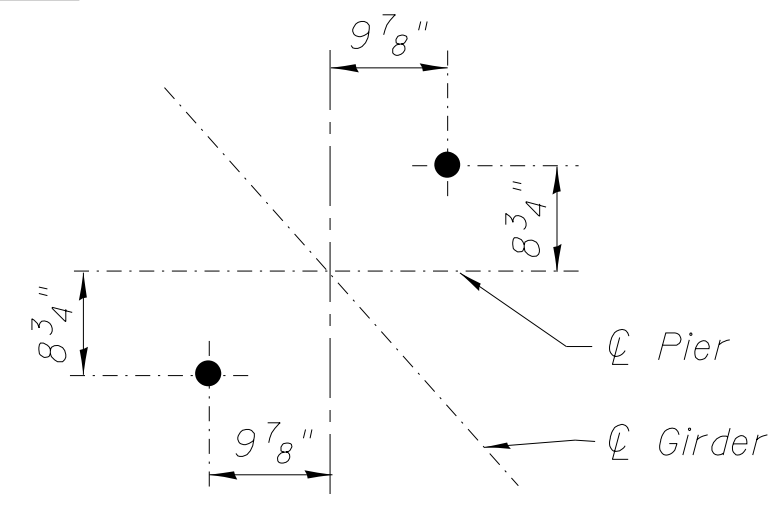
FOOTING PLAN



SECTION A-A



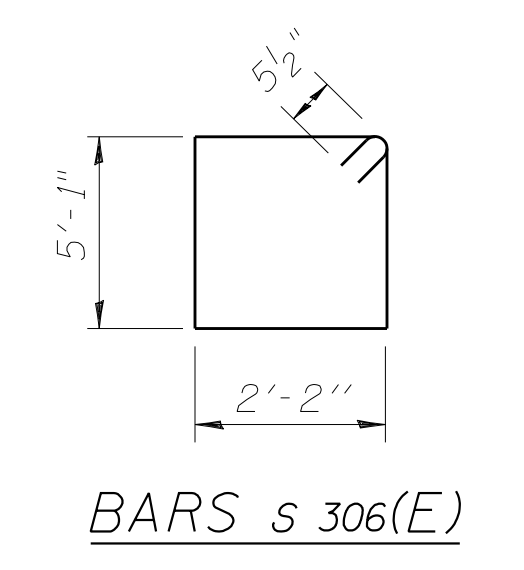
SECTION C-C



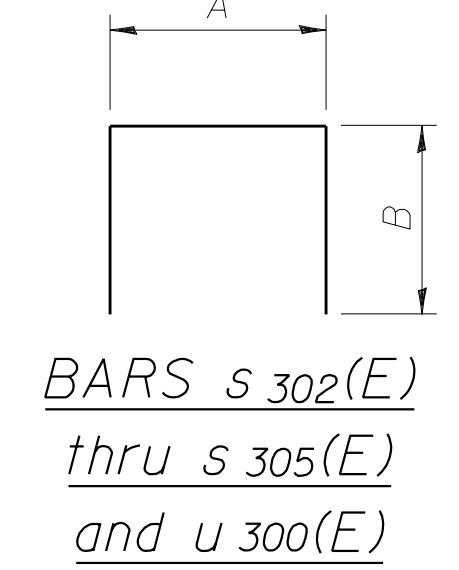
ANCHOR BOLT LAYOUT

A & B DIMENSIONS

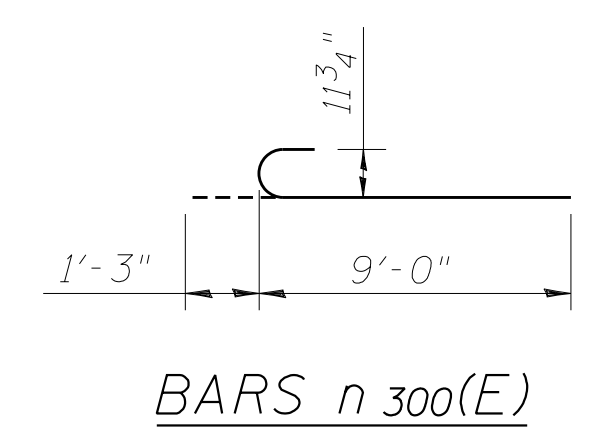
Bar	A	B
s302(E)	1'-11"	3'-5"
s303(E)	1'-11"	2'-8"
s304(E)	2'-2"	3'-0"
s305(E)	2'-2"	15'-9"
u300(E)	2'-1"	4'-0"
u301(E)	2'-2"	1'-2"



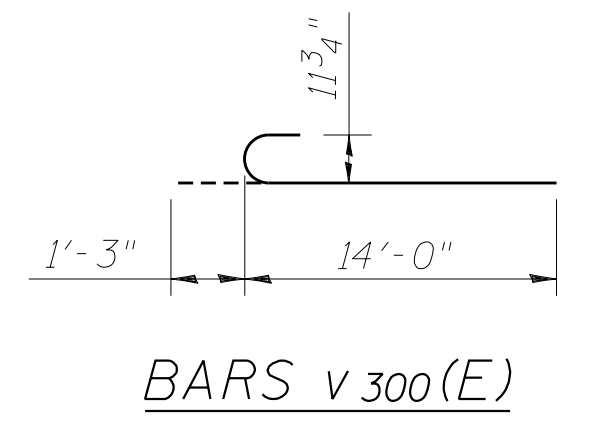
BARS s306(E)



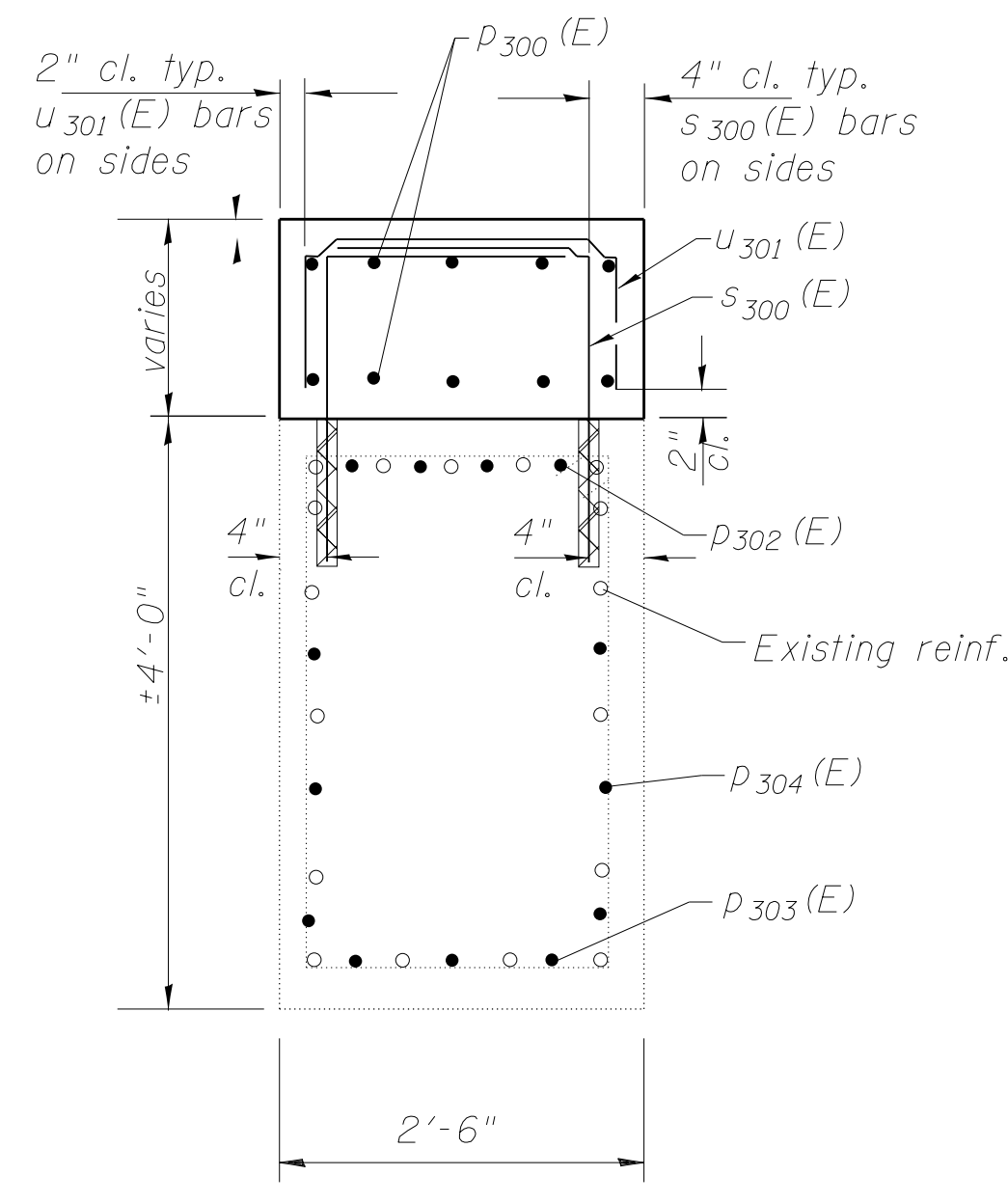
BARS s302(E) thru s305(E) and u300(E)



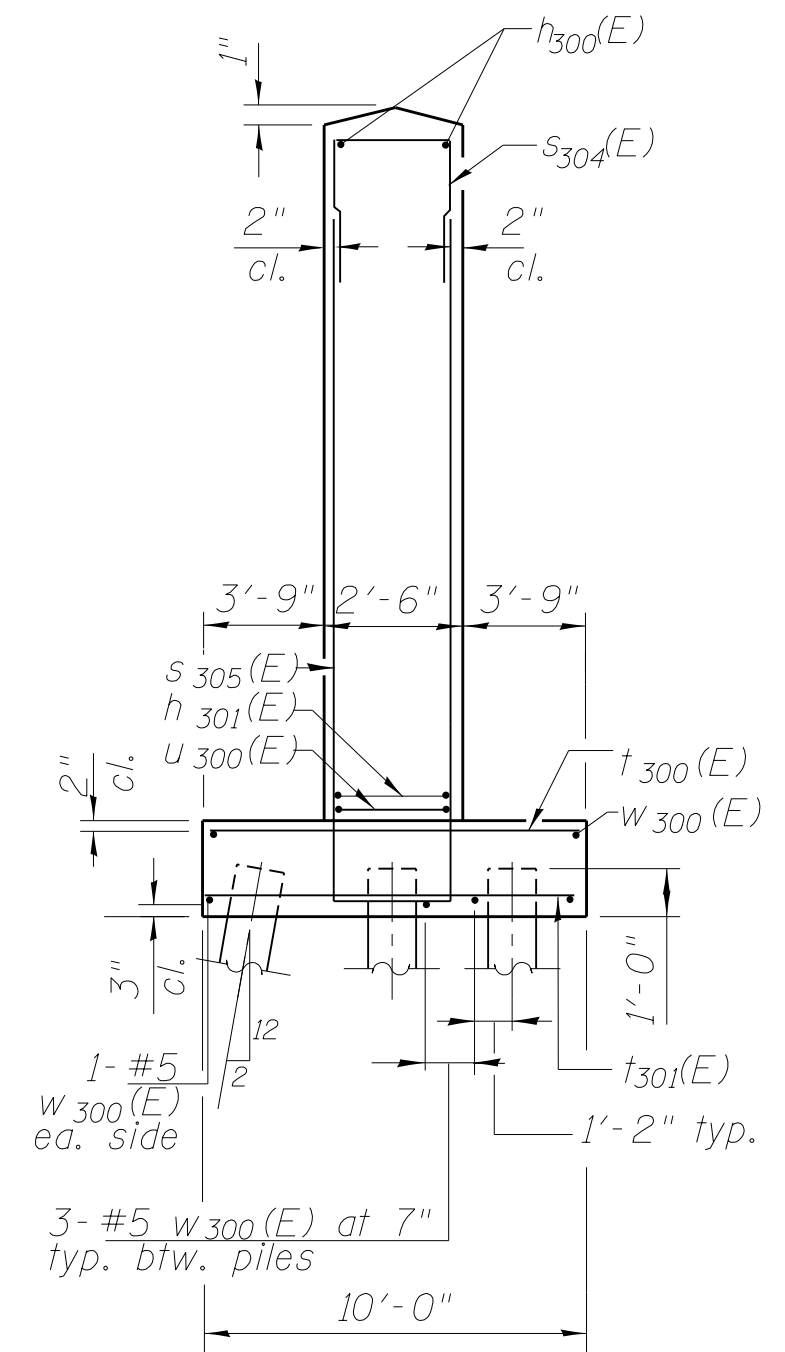
BARS n300(E)



BARS v300(E)



SECTION B-B



END VIEW

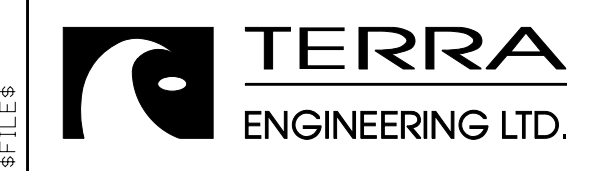
PILE DATA

Type: Steel HP 12 x 53
 Nominal Required Bearing: 200 Kips
 Factored Resistance Available: 100 Kips
 Est. Length: 27'
 No. Production Piles: 8
 No. Test Piles: 1

BILL OF MATERIAL

Bar	No.	Size	Length	Shape
h300(E)	32	#5	10'-8"	—
h301(E)	32	#5	3'-8"	—
n300(E)	20	#9	10'-3"	U
p300(E)	10	#6	30'-2"	—
p301(E)	5	#6	24'-8"	—
p302(E)	7	#6	12'-8"	—
p303(E)	7	#6	4'-0"	—
p304(E)	6	#5	3'-5"	—
p305(E)	5	#5	6'-7"	—
p306(E)	6	#5	12'-8"	—
p307(E)	5	#9	24'-8"	—
s300(E)	70	#5	3'-10"	L
s301(E)	16	#5	4'-2"	L
s302(E)	16	#4	8'-9"	□
s303(E)	8	#4	7'-3"	□
s304(E)	20	#5	8'-2"	□
s305(E)	20	#9	33'-8"	□
s306(E)	14	#5	15'-5"	□
t300(E)	18	#4	9'-8"	—
t301(E)	14	#7	9'-8"	—
u300(E)	24	#6	10'-1"	C
u301(E)	44	#4	4'-6"	C
v300(E)	20	#9	15'-3"	U
w300(E)	19	#5	11'-8"	—
w301(E)	12	#5	3'-3"	—
Structure Excavation		Cu. Yd.	99	
Concrete Structures		Cu. Yd.	41.8	
Reinforcement Bars, Epoxy Coated		Pound	7910	
Concrete Removal		Cu. Yd.	2.2	
Furnishing Steel Piles, HP 12x53		Foot	216	
Driving Piles		Foot	216	
Test Pile, Steel HP 12x53		Each	1	

Minimum bar laps:
 #4 2'-1"
 #5 2'-7"
 #6 3'-1"



USER NAME =	DESIGNED - EA	REVISED
PLOT SCALE =	CHECKED - OY	REVISED
PLOT DATE	DRAWN - CM	REVISED
	CHECKED - JB	REVISED

STATE OF ILLINOIS
 DEPARTMENT OF TRANSPORTATION

PIER 4 - SOUTHBOUND
 STRUCTURE NOS. 038 - 0013 & 0014

SHEET NO. S63 OF S71 SHEETS

F.A.I. RTE.	SECTION	COUNTY	TOTAL SHEETS	SHEET NO.
57	38-2HWB, HVBR-1	IROQUOIS	146	102
				CONTRACT NO. 66942

ILLINOIS FED. AID PROJECT