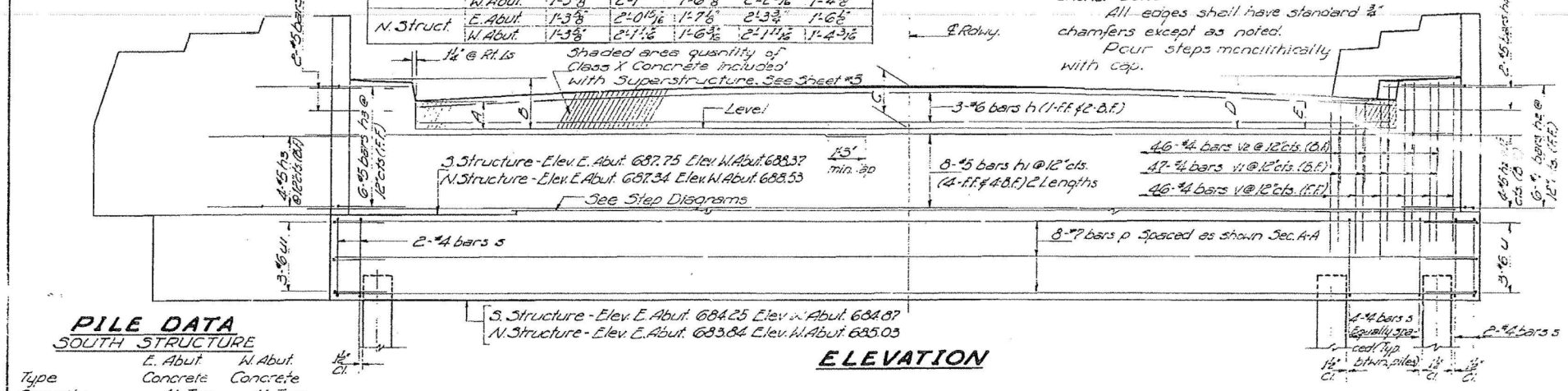


TABLE OF DIMENSIONS
(Dimensions at front face of Abut.)

Location	A	B	C	D	E
S. Struct. E. Abut.	1'-3 3/8"	2'-1"	1'-6 1/8"	2'-3 1/4"	1'-5 3/8"
W. Abut.	1'-3 3/8"	2'-1"	1'-6 1/8"	2'-3 1/4"	1'-4 3/8"
N. Struct. E. Abut.	1'-3 3/8"	2'-0 1/8"	1'-7 1/8"	2'-3 3/8"	1'-6 1/8"
W. Abut.	1'-3 3/8"	2'-1 1/8"	1'-6 1/8"	2'-1 1/8"	1'-4 3/8"

Note: Space reinforcement in cap to miss anchor bolts.
All edges shall have standard chamfers except as noted.
Pour steps monolithically with cap.



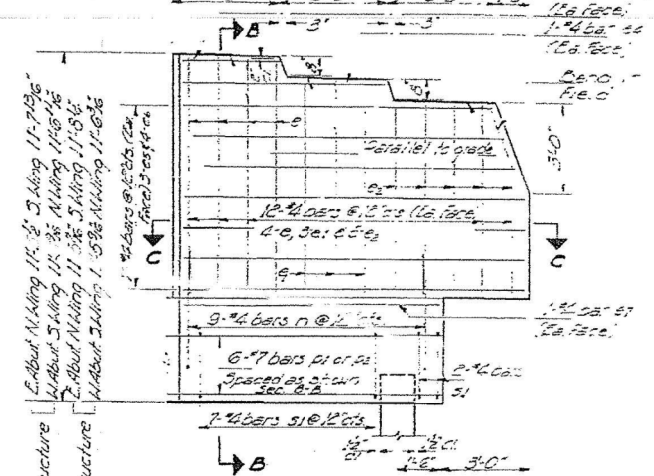
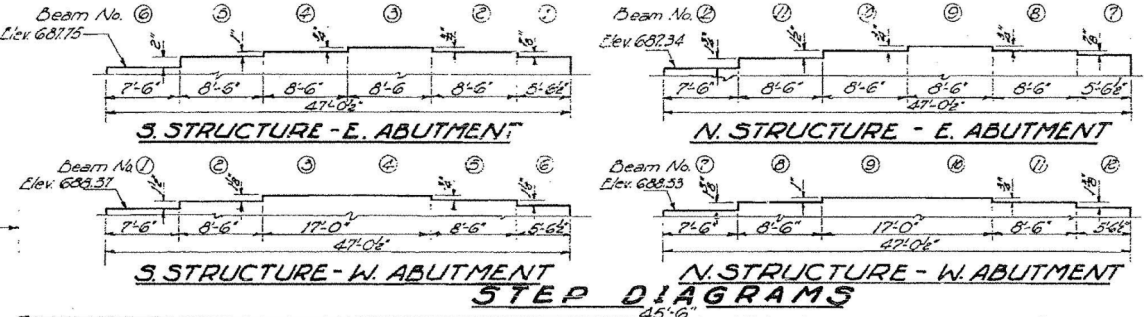
PILE DATA
SOUTH STRUCTURE

Type	E. Abut.	W. Abut.
Capacity	41 Tons	41 Tons
Est. Length	60 Ft.	58 Ft.
No. Required	12	13
Test Pile	1	-

NORTH STRUCTURE

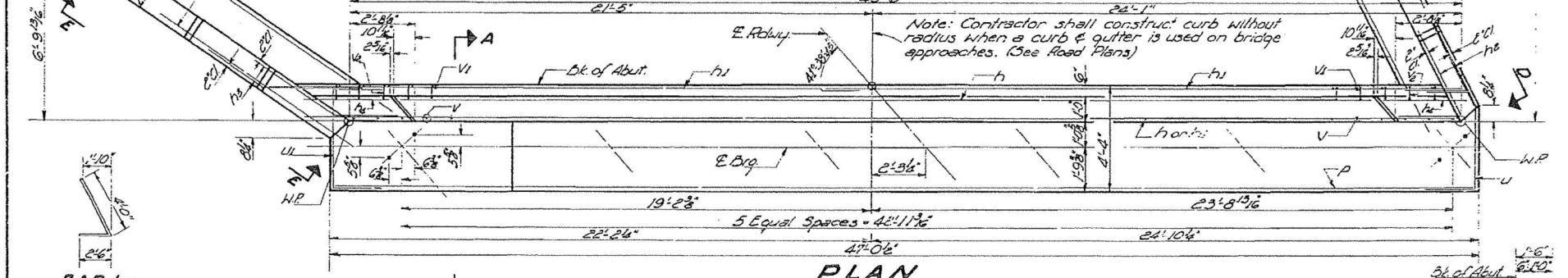
Type	E. Abut.	W. Abut.
Capacity	41 Tons	41 Tons
Est. Length	58 Ft.	58 Ft.
No. Required	13	12
Test Pile	-	-

ELEVATION

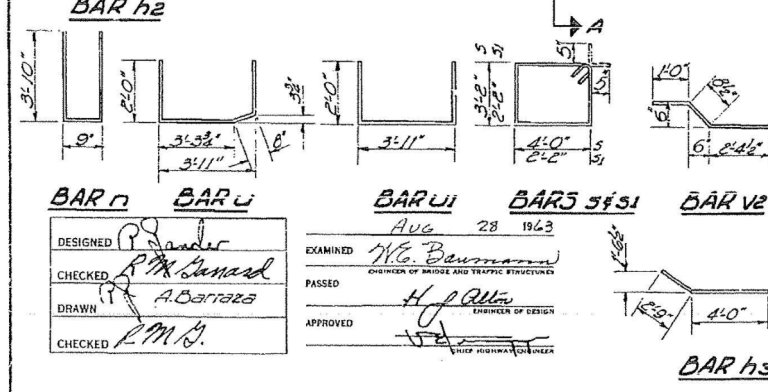


SECTION C-C
BILL OF MATERIAL
4 ABUTMENTS

Bar No.	Size	Length	Scope
e	#4	7'-9"	
e1	#4	7'-1"	
e2	#4	6'-5"	
e3	#4	3'-2"	
e4	#4	6'-10"	
e5	#4	10'-6"	
e6	#4	14'-8"	
e7	#4	8'-8"	
f	#6	59'-9"	
f1	#6	25'-0"	
f2	#6	6'-6"	
f3	#6	6'-9"	
f4	#6	3'-6"	
f5	#6	8'-5"	
g	#8	46'-6"	
g1	#8	8'-9"	
g2	#8	10'-6"	
h	#6	15'-2"	
h1	#6	9'-2"	
h2	#6	7'-8"	
h3	#6	4'-3"	
h4	#6	4'-1"	
i	#4	6'-6"	
i1	#4	4'-3"	
i2	#4	4'-1"	
j	#4	15'-2"	
j1	#4	9'-2"	
j2	#4	10'-6"	
k	#4	15'-2"	
k1	#4	9'-2"	
k2	#4	10'-6"	

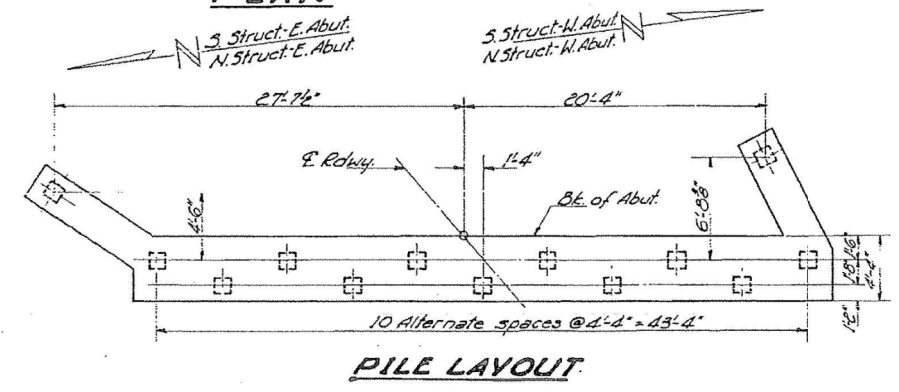


PLAN

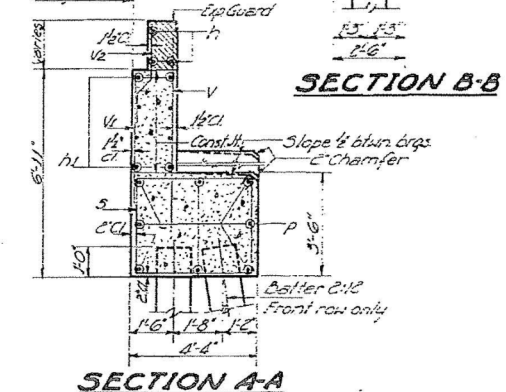


DESIGNED: P. M. S.
CHECKED: P. M. S.
DRAWN: A. Carrara
CHECKED: P. M. S.

EXAMINED: W. G. Baumann
PASSED: H. J. Allen
APPROVED: [Signature]



PILE LAYOUT



SECTION A-A

SECTION B-B

ABUTMENT
F.A.I. RT. 57 SEC. 38-2 HVB
IROQUOIS COUNTY
STA. 1037+61.38

FOR INFORMATION ONLY

T:\Projects\03-228-1001-157 Bridges-PTB 153-37-Drawings\CAD Drawings\Structure\N.F. Road Plans\existing plans\03280013_4-66942-007-EX BRIDGE PLAN.dwg



USER NAME =	DESIGNED - DDB	REVISED
PLOT SCALE =	CHECKED - OY	REVISED
PLOT DATE	DRAWN - DDB	REVISED
	CHECKED - OY	REVISED

STATE OF ILLINOIS
DEPARTMENT OF TRANSPORTATION

EXISTING STRUCTURE PLANS
STRUCTURE NOS. 038 - 0013 & 0014

SHEET NO. 7 OF 20 SHEETS

F.A.I. RT.	SECTION	COUNTY	TOTAL SHEETS	SHEET NO.
57	38-2HVB, HVBR-1	IROQUOIS	146	117
			CONTRACT NO. 66942	
ILLINOIS FED. AID PROJECT				