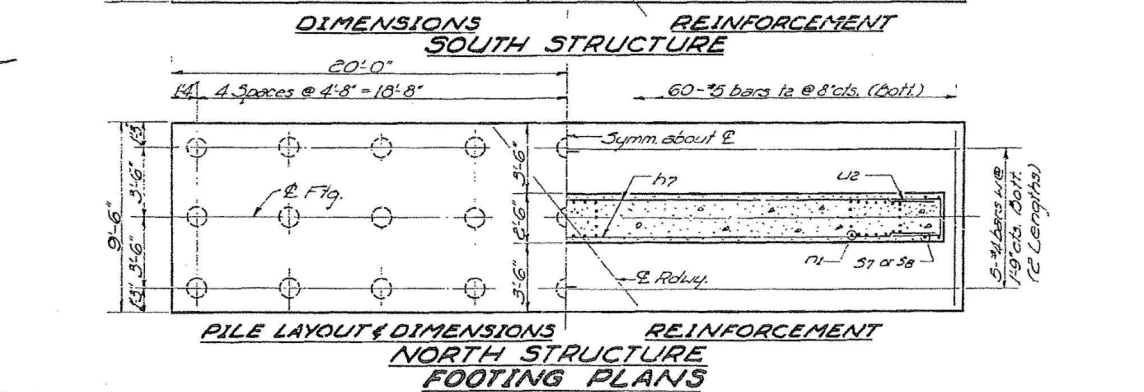
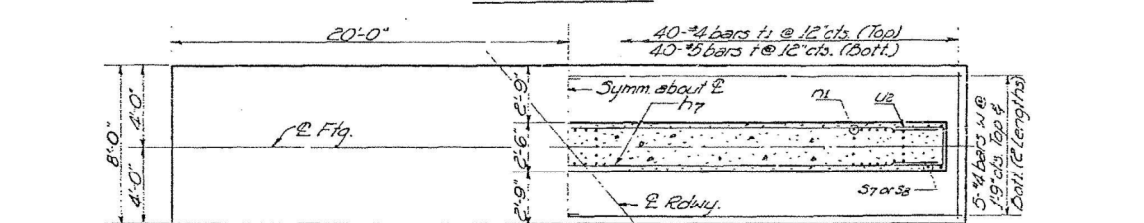
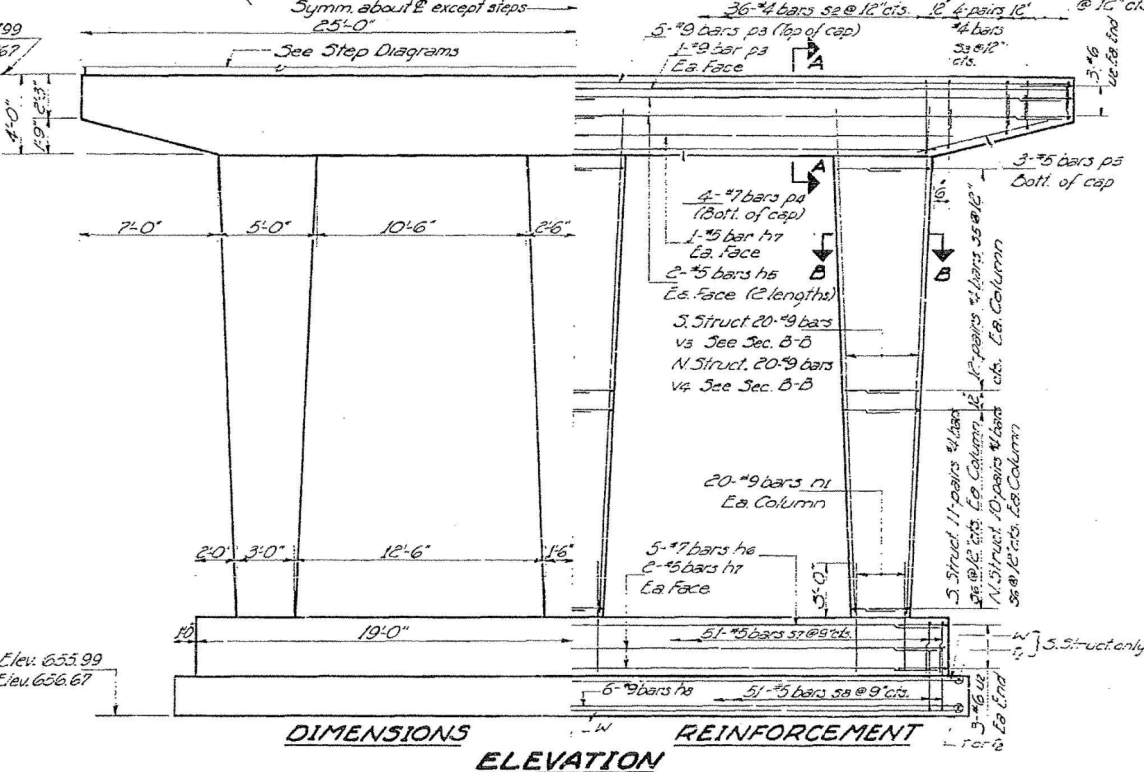
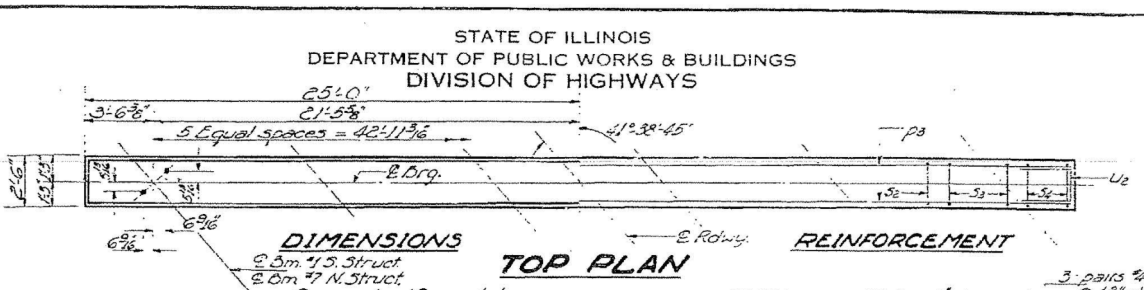


FOOTING PRESSURE
SOUTH STRUCTURE
Max. 21 Tons/13q.Ft.

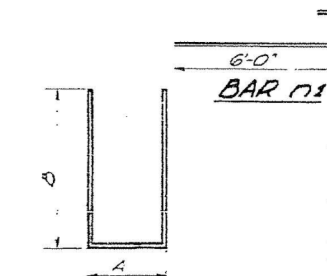
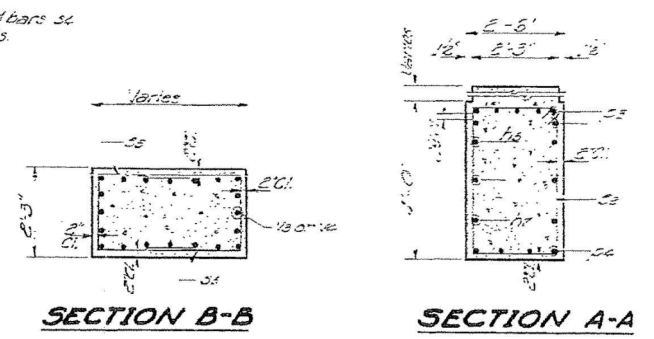
PILE DATA
NORTH STRUCTURE
Type: Crossed
Capacity: 24 Tons
Est. Length: 32 Ft.
No. Required: 27

DESIGNED: J. Sander
CHECKED: R.M. Linnard
DRAWN: A. Barrera
CHECKED: R.M. Linnard

EXAMINED: W.E. Baumgardner
PASSED:
APPROVED: H. J. Owen
AUG 28 1963



Note:
Space reinforcement in cap to resist anchor bolts.
All edges shall have standard chamfers except footings.
Pour steel monolithically with cap.



A & B DIMENSIONS

BAR	A	B
53	2'-2"	2'-4"
54	2'-2"	1'-10"
55	1'-11"	2'-10"
56	1'-11"	2'-4"
57	2'-2"	2'-9"
58	2'-2"	3'-5"

BILL OF MATERIAL & PIERS

Bar	Ln.	Size	Length	Stake
h8	16	#5	25'-6"	
h8	10	#7	37'-6"	
h8	12	#5	37'-6"	
h8	12	#9	33'-6"	
n1	20	#9	7'-5"	
h3	12	#9	29'-6"	
h4	2	#7	38'-0"	
h5	12	#5	7'-9"	
h6	12	#4	12'-6"	
h6	32	#4	6'-10"	
h6	24	#4	5'-10"	
h6	144	#4	7'-7"	
h6	126	#4	6'-7"	
h7	102	#5	7'-8"	
h8	102	#5	9'-0"	
h7	40	#5	7'-6"	
h7	40	#4	7'-6"	
h8	60	#5	9'-0"	
h8	24	#6	7'-0"	
h3	60	#9	25'-4"	
h8	60	#9	24'-1"	
W	30	#4	20'-3"	

Class X Concrete C-4500 (5,000)
Reinforcement Bars 16s. 20s. 24s.
Crossed Piles Lin. Ft. 264

PIER #1
FA.I. 57 SEC. 38-2HVB
IROQUOIS COUNTY
STA. 1037+61.38

FOR INFORMATION ONLY

I:\Projects\03-228-1001-157 Bridges-PTB 153-37-Drawings\CADD Drawings\Structure\1\Final Plans\existing plans\03280013_4-6694-2-008-EX BRIDGE-PLANS.dwg



USER NAME	DESIGNED	REVISION
	DESIGNED - DDB	REVISION
	CHECKED - OY	REVISION
	DRAWN - DDB	REVISION
	CHECKED - OY	REVISION

STATE OF ILLINOIS
DEPARTMENT OF TRANSPORTATION

EXISTING STRUCTURE PLANS
STRUCTURE NOS. 038 - 0013 & 0014

F.A.I. RTE.	SECTION	COUNTY	TOTAL SHEETS	SHEET NO.
57	38-2HVB, HVBR-1	IROQUOIS	146	118

CONTRACT NO. 66942