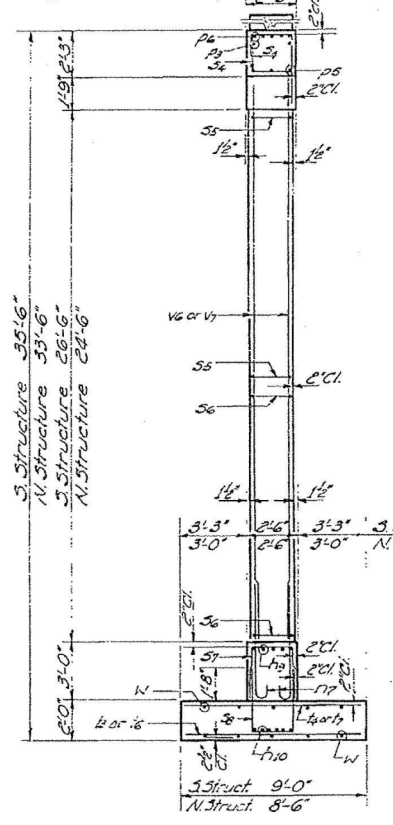
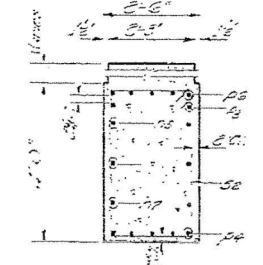
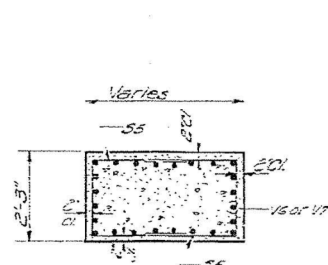
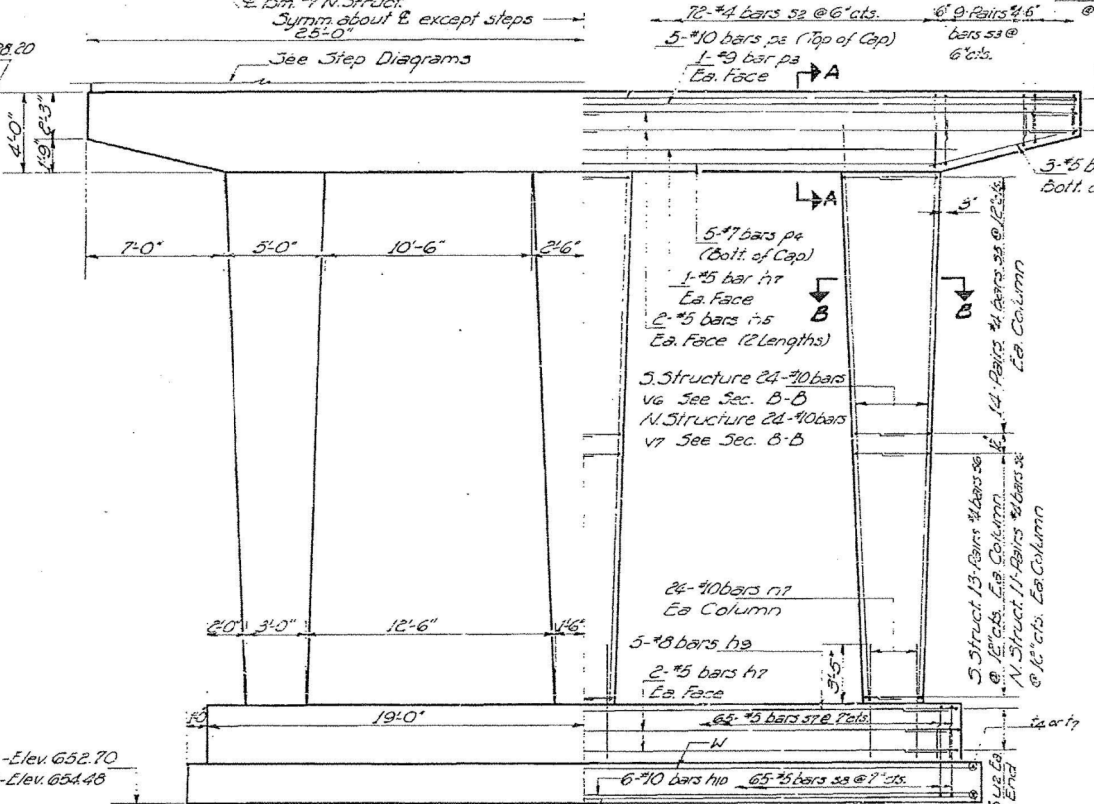


Note:  
Space reinforcement in cap to miss anchor bolts.  
All edges shall have standard 1/2 chamfers except footings.  
Pour steps monolithically with cap.  
For bar details (s2, s3, s4, s5, s6, s7, s8 @ 6" cts.) see sheet #7.



3-Structure Elev. 688.20  
N-Structure Elev. 687.98



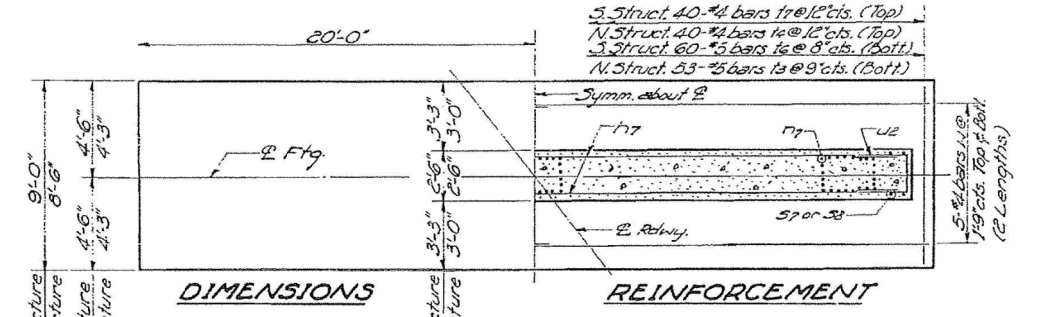
**BILL OF MATERIAL 2 PIERS**

Bar No.	Size	Length	Stages
h5	#6	25'-6"	
h7	#5	37'-6"	
h8	#5	37'-6"	
h10	#5	39'-6"	
h7	#5	7'-10"	
s3	#4	49'-6"	
ps	#10	36'-0"	
ps	#5	7'-9"	
ps	#10	38'-6"	
s2	#2	12'-6"	
s3	#2	6'-10"	
s2	#2	31'-10"	
s5	#3	7'-7"	
s6	#2	6'-7"	
s7	#3	7'-8"	
s8	#3	9'-0"	
s3	#5	8'-0"	
s4	#5	8'-0"	
s6	#5	8'-6"	
s7	#5	8'-6"	
u2	#6	7'-0"	
vs	#2	26'-0"	
vs	#2	27'-0"	
w	#4	20'-3"	

Class X Concrete Cu. Yds. 159.0  
Reinforcement Bars Lbs. 37660

**FOOTING PRESSURE SOUTH STRUCTURE**  
Max. 2.1 Tons/Sq. Ft.

**NORTH STRUCTURE**  
Max. 2.0 Tons/Sq. Ft.



DESIGNED: P. J. Under  
CHECKED: E. M. Sunard  
DRAWN: A. Barreza  
CHECKED: R. M. G.

EXAMINED: W. B. Bannerman  
PASSED:  
APPROVED: H. J. O'Connell  
CHIEF HIGHWAY ENGINEER

AUG 28 1963

**PIER #2**  
F.A.I. RT. 57 SEC. 38-2HVB  
IROQUOIS COUNTY  
STA. 1037+61.38

FOR INFORMATION ONLY

I:\P\projects\09-228-1001-157 Bridges-PTB 153-37\Drawings\Structure\1\Final Plans\existing plans\0380013\_4-66942-000-EX BRIDGE PLAN.dwg



USER NAME =	DESIGNED - DDB	REVISED
PLOT SCALE =	CHECKED - OY	REVISED
PLOT DATE	DRAWN - DDB	REVISED
	CHECKED - OY	REVISED

STATE OF ILLINOIS  
DEPARTMENT OF TRANSPORTATION

EXISTING STRUCTURE PLANS  
STRUCTURE NOS. 038 - 0013 & 0014

SHEET NO. 9 OF 20 SHEETS

F.A.I. RT.	SECTION	COUNTY	TOTAL SHEETS	SHEET NO.
57	38-2HVB, HVBR-1	IROQUOIS	146	119
CONTRACT NO. 66942				

ILLINOIS FED. AID PROJECT