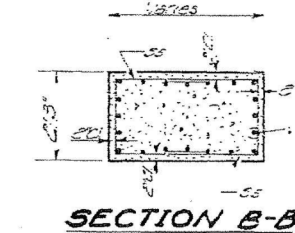


Notes:
Space reinforcement in cap to miss anchor bolts.
All edges shall have standard 2" chamfer except corners.
Pour steps monolithically with cap.
For Section A-A see sheet 78.
For bar details (S1, S2, S3, S4) see sheet 77.



A & B DIMENSIONS

BAR	A	B
S11	8'-2"	3'-9"
S12	8'-2"	16'-2"
S13	8'-2"	16'-0"

**BILL OF MATERIAL
2 PIERS**

BAR	NO.	SIZE	LENGTH	QUANTITY	REMARKS
76	16	#4	25'-6"		
77	66	#4	31'-6"		
78	6	#4	5'-6"		
79	6	#4	39'-9"		
80	120	#4	8'-0"		
81	2	#4	25'-6"		
82	10	#4	36'-0"		
83	14	#4	7'-8"		
84	10	#4	42'-6"		
85	144	#4	12'-6"		
86	72	#4	21'-0"		
87	20	#4	32'-0"		
88	72	#4	72'-0"		
89	72	#4	6'-0"		
90	162	#4	0'-6"		
91	16	#4	35'-6"		
92	76	#4	30'-6"		
93	149	#4	41'-6"		
94	20	#4	9'-6"		
95	78	#4	7'-0"		
96	100	#10	12'-0"		
97	30	#4	20'-3"		

**FOOTING PRESSURE
SOUTH STRUCTURE**

Max. 3.0 Tons/Sq. Ft.

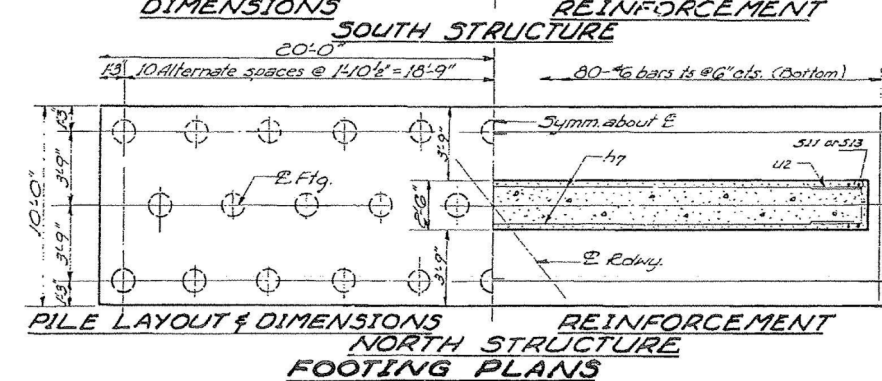
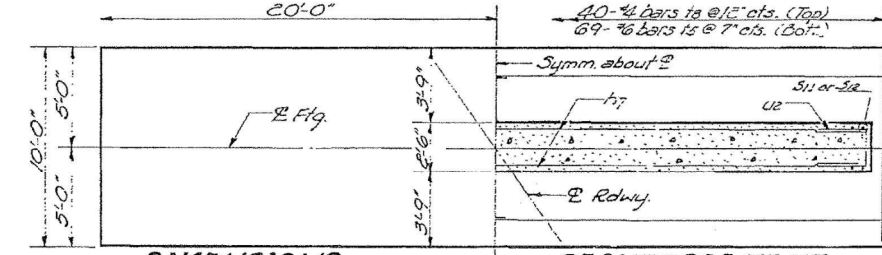
**PILE DATA
NORTH STRUCTURE**

Type - Creosoted
Capacity - 24 Tons
Est Length - 28 Ft.
No. Required - 32
Test Pile - 1

DESIGNED: P. Prade
CHECKED: R. McQuinn
DRAWN: A. Barrera
CHECKED: R.M.D.

EXAMINED: W.G. Beermann
PASSED: A. Barrera
APPROVED: H. J. Allen

AUG 28 1943



**PIER #3
F.A.I. RT. 57 SEC. 38-2HVB
IROQUOIS COUNTY
STA. 1037+61.38**

FOR INFORMATION ONLY

I:\Projects\03-228-1001-157 Bridges-PTB 153-37\Drawings\CADD Drawings\Structure\1\Final Plans\existing plans\03280013_4_66942-010-EX-BRIDGE_PLANS.dwg