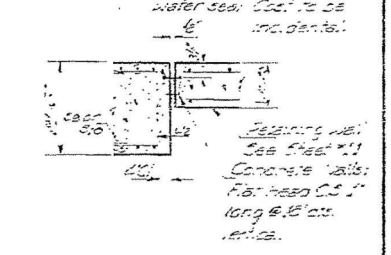
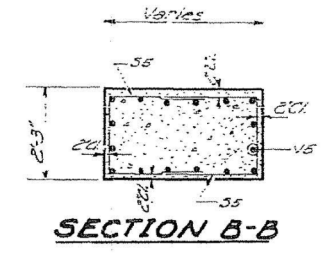
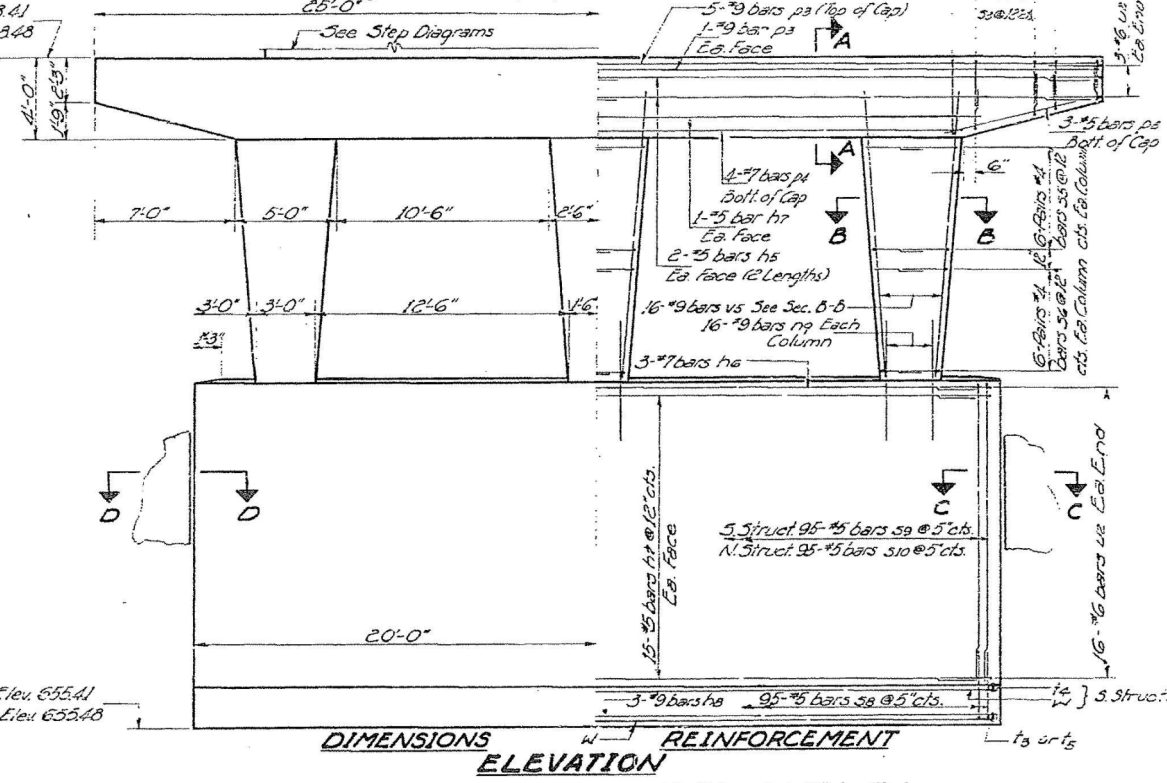
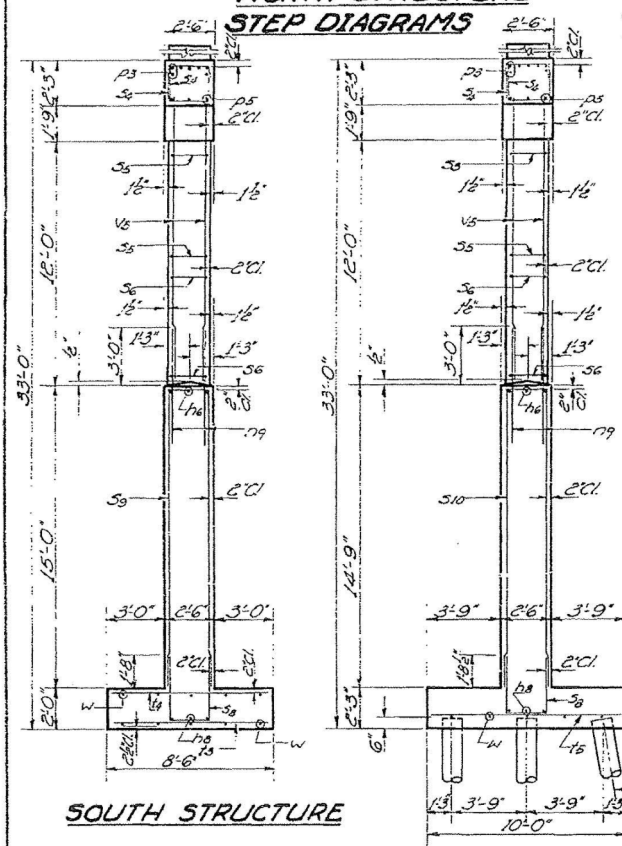


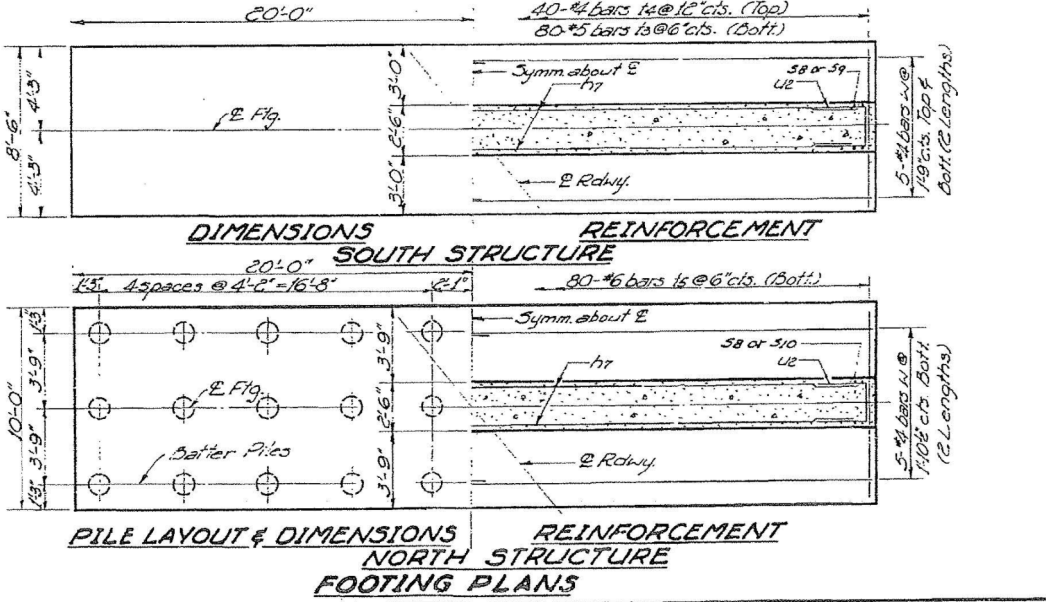
Note:
Space reinforcement in caps to miss anchor bolts.
All edges shall have standard 1/2 chamfers except footings.
Pour steps monolithically with caps.
For Section A-A and bar details (S2, S3, S4, S5, S6, S8 and U2) see Sheet #1.



FOOTING PRESSURE
SOUTH STRUCTURE
Max 3.1 Tons/15q Ft.

PILE DATA
NORTH STRUCTURE
Type: Creosoted
Capacity: 24 Tons.
Est. Length: 27 Ft.
No. Required: 30

DESIGNED: [Signature]
CHECKED: R.M. [Signature]
DRAWN: A. Barraco
CHECKED: R.M.B.
EXAMINED: W.C. [Signature]
PASSED: [Signature]
APPROVED: [Signature]



BILL OF MATERIAL
2 PIERS

Bar	No.	Size	Length	Grade
S2	16	#5	25'-6"	
S3	6	#7	37'-6"	
S4	64	#5	37'-6"	
S5	6	#9	39'-6"	
S6	14	#9	49'-6"	
S7	8	#7	36'-0"	
S8	16	#5	7'-9"	
S9	72	#2	12'-6"	
S10	32	#4	6'-10"	
S11	24	#4	35'-10"	
S12	72	#4	7'-9"	
S13	72	#4	6'-9"	
S14	100	#5	9'-0"	
S15	96	#5	31'-8"	
S16	96	#5	31'-8"	
S17	80	#5	8'-0"	
S18	40	#4	8'-0"	
S19	80	#6	8'-6"	
S20	96	#6	7'-0"	
S21	96	#6	14'-4"	
S22	30	#4	20'-3"	

Class X Concrete Cu. Yds. 228.0
Reinforcement Bars Lbs. 26,630
Creosoted Piles Lin. Ft. 81.0

PIER #4
F.A.I. RT. 57 SEC. 38-2HVB
IROQUOIS COUNTY
STA. 1037+61.38

FOR INFORMATION ONLY

I:\Projects\03-228-1001-157 Bridges-PTB 153-37-Drawings\CADD Drawings\Structure\1\Final Plans\existing plans\03280013_4-66942-011-EX-BRIDGE_PLANS.dgn