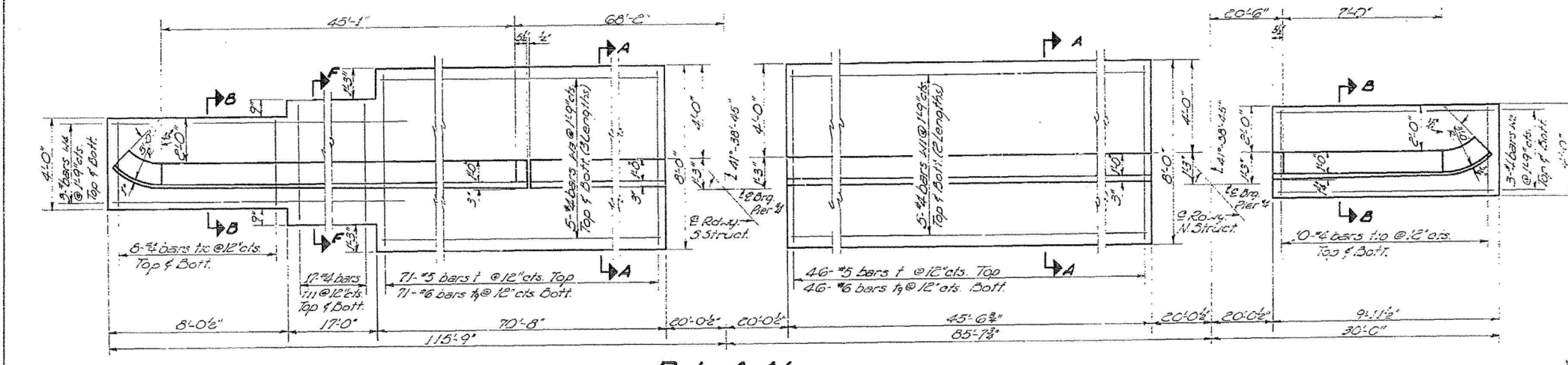
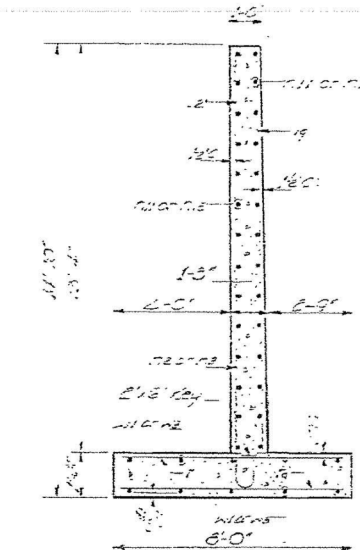
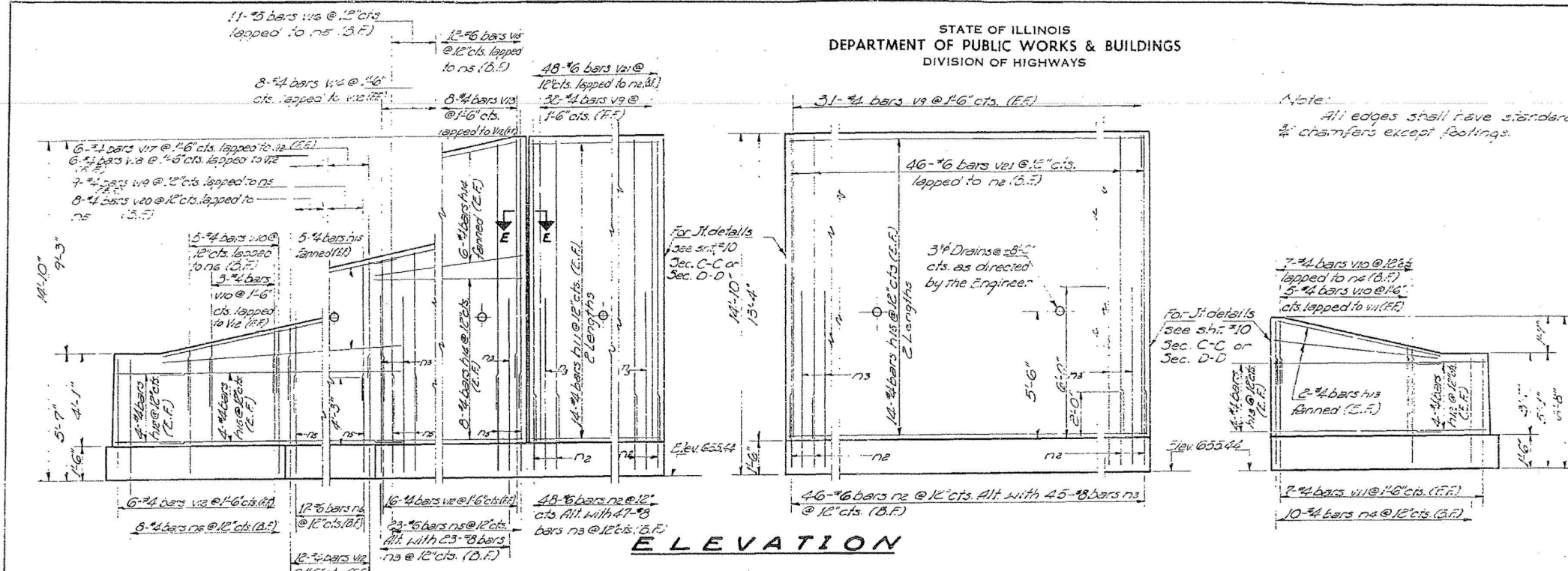


STATE OF ILLINOIS  
DEPARTMENT OF PUBLIC WORKS & BUILDINGS  
DIVISION OF HIGHWAYS

DATE	BY	REVISION	SHEET NO.
F.A.I. 57	11-22-10	1	17 5-51

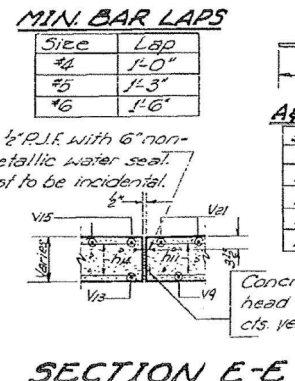
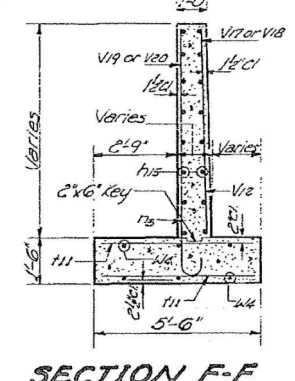
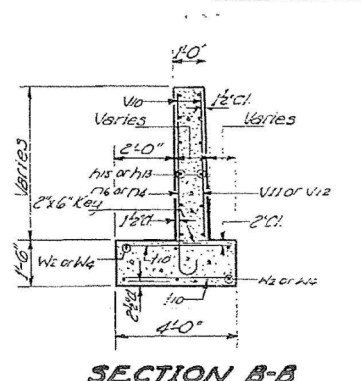


**BILL OF MATERIAL**

Bar	Size	Length	Quantity
1	1/2"	12'	10
2	3/4"	12'	10
3	1"	12'	10
4	1 1/4"	12'	10
5	1 1/2"	12'	10
6	1 3/4"	12'	10
7	2"	12'	10
8	2 1/4"	12'	10
9	2 1/2"	12'	10
10	2 3/4"	12'	10
11	3"	12'	10
12	3 1/4"	12'	10
13	3 1/2"	12'	10
14	3 3/4"	12'	10
15	4"	12'	10
16	4 1/4"	12'	10
17	4 1/2"	12'	10
18	4 3/4"	12'	10
19	5"	12'	10
20	5 1/4"	12'	10
21	5 1/2"	12'	10
22	5 3/4"	12'	10
23	6"	12'	10
24	6 1/4"	12'	10
25	6 1/2"	12'	10
26	6 3/4"	12'	10
27	7"	12'	10
28	7 1/4"	12'	10
29	7 1/2"	12'	10
30	7 3/4"	12'	10
31	8"	12'	10
32	8 1/4"	12'	10
33	8 1/2"	12'	10
34	8 3/4"	12'	10
35	9"	12'	10
36	9 1/4"	12'	10
37	9 1/2"	12'	10
38	9 3/4"	12'	10
39	10"	12'	10
40	10 1/4"	12'	10
41	10 1/2"	12'	10
42	10 3/4"	12'	10
43	11"	12'	10
44	11 1/4"	12'	10
45	11 1/2"	12'	10
46	11 3/4"	12'	10
47	12"	12'	10

**FOOTING PRESSURE**  
Max. 1.6 Tons/15q. ft.

DESIGNED	P. J. Sander	EXAMINED	AUG 28 1963
CHECKED	R. M. Gansard	PASSED	H. E. Brumman
DRAWN	C. A. Barnes	APPROVED	H. J. O'Connell
CHECKED	R. M. G.		

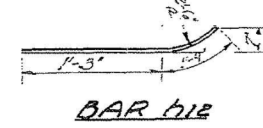


**MIN BAR LAPS**

Size	Lap
3/4"	1'-0"
1"	1'-3"
1 1/4"	1'-6"

**A & B DIMENSIONS**

Bar	A	B
n1	3'-3"	8"
n2	7'-3"	1'-1"
n3	4'-7"	6"
n4	5'-6"	8"
n5	5'-1"	6"



**RETAINING WALL**  
F.A.I. RTE. 57 SEC. 38-2+VB  
IROQUOIS COUNTY  
STA. 1037+61.38

FOR INFORMATION ONLY

I:\Projects\03-228-1001-157 Bridges-PTB 153-37\Drawings\CADD Drawings\Structure\1\Final Plans\existing plans\03280013\_4-66942-012-EX BRIDGE PLANS.dwg



USER NAME =	DESIGNED - DDB	REVISED
PLOT SCALE =	CHECKED - OY	REVISED
PLOT DATE =	DRAWN - DDB	REVISED
	CHECKED - OY	REVISED

STATE OF ILLINOIS  
DEPARTMENT OF TRANSPORTATION

EXISTING STRUCTURE PLANS  
STRUCTURE NOS. 038 - 0013 & 0014

F.A.I. RTE.	SECTION	COUNTY	TOTAL SHEETS	SHEET NO.
57	38-2HVB, HVBR-1	IROQUOIS	146	122

CONTRACT NO. 66942

SHEET NO. 12 OF 20 SHEETS

ILLINOIS FED. AID PROJECT