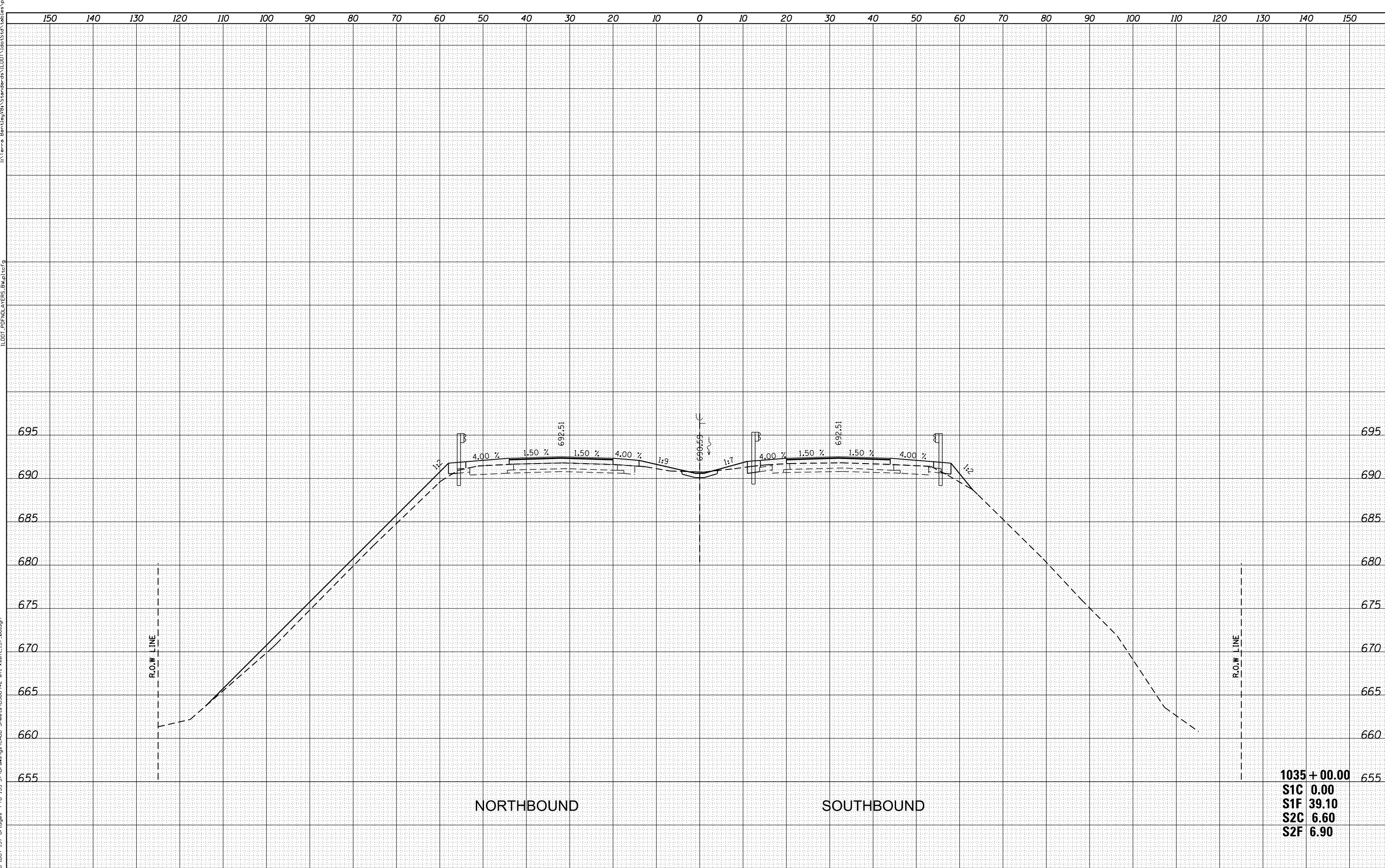


DATE	
BY	
SURVEYED	
PLOTTED	
TEMPLATE	
AREAS CHECKED	
NO.	

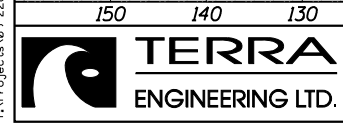
DATE	
BY	
SURVEYED	
PLOTTED	
TEMPLATE	
AREAS CHECKED	
NO.	



NORTHBOUND

SOUTHBOUND

1035 + 00.00
S1C 0.00
S1F 39.10
S2C 6.60
S2F 6.90



USER NAME = WAH	DESIGNED -	REVISIED -
	DRAWN -	REVISIED -
PLOT SCALE = 20.0000' / in.	CHECKED -	REVISIED -
PLOT DATE = 8/21/2012 11:35:54 AM	DATE -	REVISIED -

STATE OF ILLINOIS
DEPARTMENT OF TRANSPORTATION

PROPOSED CROSS SECTIONS
I-57 OVER OLD ROUTE 45 AND ILLINOIS CENTRAL RAILROAD
SCALE: SHEET NO. 06 OF 16 SHEETS STA. 1035+00.00 TO STA. 1035+00.00

F.A.I. RTE.	SECTION	COUNTY	TOTAL SHEETS	SHEET NO.
57	(38-2)HVBR, HVBR-1	IROQUOIS	146	136
				CONTRACT NO. 66942
ILLINOIS FED. AID PROJECT				