

STATE OF ILLINOIS
DEPARTMENT OF TRANSPORTATION
DIVISION OF HIGHWAYS
**PROPOSED
HIGHWAY PLANS**

F.A.I. ROUTE 55 (I-55)
SECTION (32-1) I

CENTERLINE MICRO-SURFACING
GRUNDY COUNTY

C-93-036-13

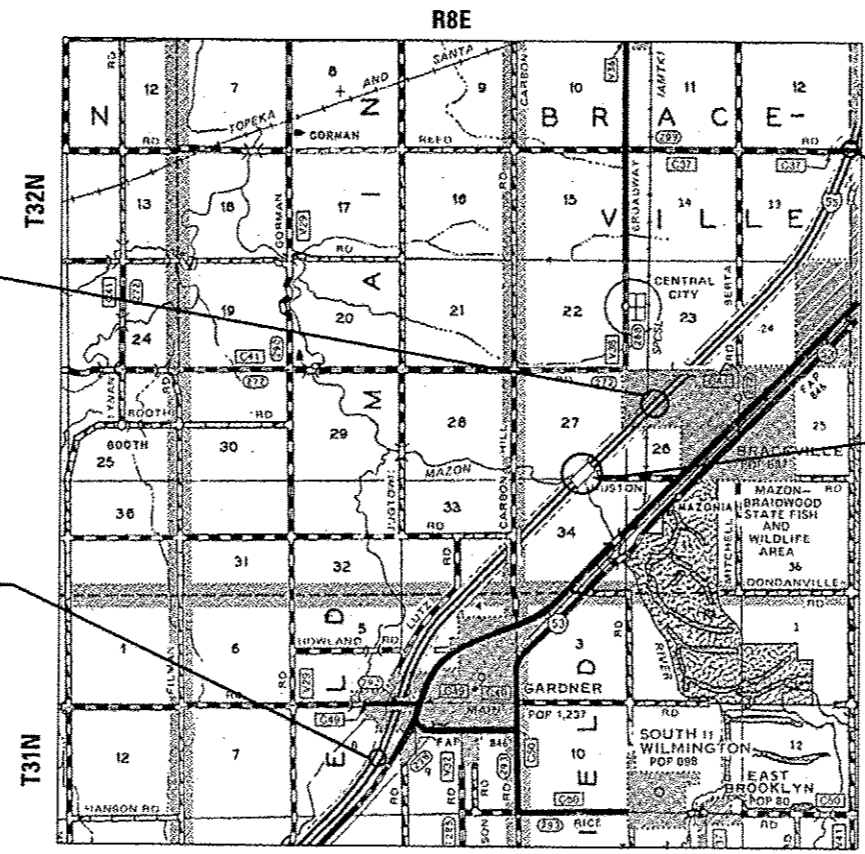
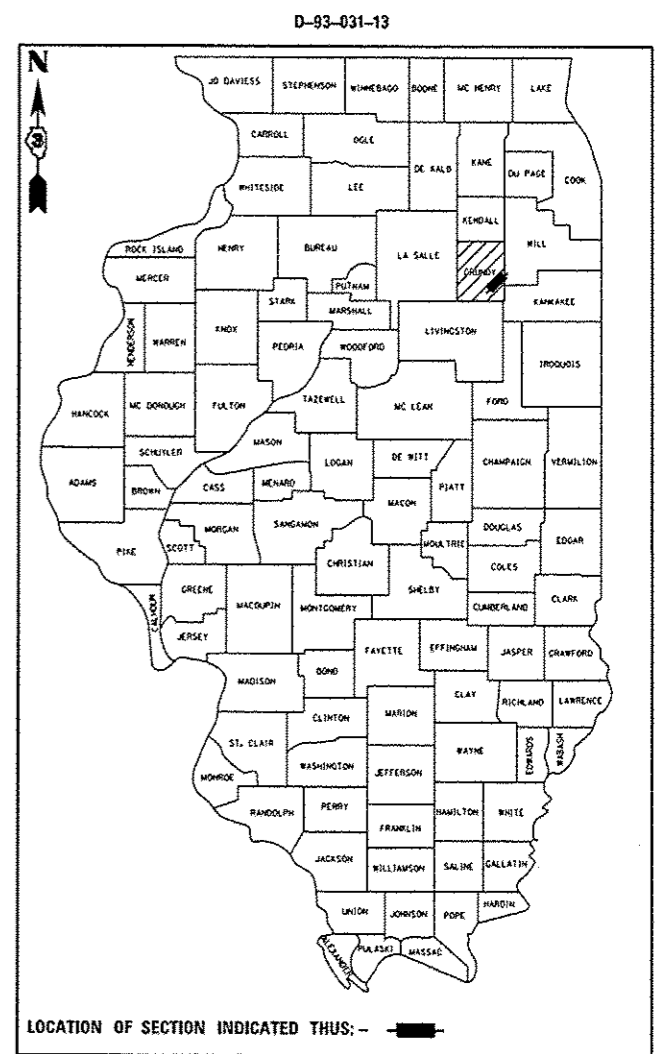
F.A.I. RTE.	SECTION	COUNTY	TOTAL SHEETS	SHEET NO.
55	(32-1) I	GRUNDY	7	1
		ILLINOIS	CONTRACT NO. 66C73	

INDEX OF SHEETS

1	COVER SHEET
2	GENERAL NOTES
3	SUMMARY OF QUANTITIES
4	TYPICAL SECTION
5	SCHEDULE OF QUANTITIES
6 - 7	DETAILS

STANDARDS

000001-06	STANDARD SYMBOLS, ABBREVIATIONS AND PATTERNS
001006	DECIMAL OF AN INCH AND OF A FOOT
701101-03	OFF-ROAD OPERATIONS MULTILANE, 15' (4.5 m) TO 24" (600 mm) FROM PAVEMENT EDGE
701106-02	OFF-ROAD OPERATIONS, MULTILANE, MORE THAN 15' (4.5 m) AWAY
701400-06	APPROACH TO LANE CLOSURE, FREEWAY/EXPRESSWAY
701401-07	LANE CLOSURE, FREEWAY/EXPRESSWAY
701426-05	LANE CLOSURE, MULTILANE INTERMITTENT OR MOVING OPERATION, FOR SPEEDS ≥ 45 MPH
701901-02	TRAFFIC CONTROL DEVICES



BRIDGE OMISSION S.I.C.S.L. RAILROAD
S.B. STA: 961 + 58.00 TO STA. 964 + 65.80
N.B. STA. 962 + 23.20 TO STA. 965 + 31.00
S.N. 032-0007 & 032-0008

BEGIN IMPROVEMENT
STA: 797 + 93

BRIDGE OMISSION MAZON RIVER
STA. 1005 + 05.17 TO STA. 1007 + 78.83
S.N. 032-0005 & 032-0006

END IMPROVEMENT
STA. 1167 + 53.53

INTERSTATE
2012 ADT = 24800
PV = 75.1% SU = 2.32% MU = 27.58%

MICROFILMED _____
REEL NUMBER _____
AWARDED _____
RESIDENT ENGINEER _____
AS BUILT CHANGES WERE MADE
ON THE FOLLOWING SHEETS _____

FULL SIZE PLANS HAVE BEEN PREPARED USING STANDARD ENGINEERING SCALES. REDUCED SIZED PLANS WILL NOT CONFORM TO STANDARD SCALES. IN MAKING MEASUREMENTS ON REDUCED PLANS, THE ABOVE SCALES MAY BE USED.

J.U.L.I.E.
JOINT UTILITY LOCATION INFORMATION FOR EXCAVATION
1-800-892-0123
OR 811

PROJECT ENGINEER: CRAIG REED, P.E.
UNIT CHEIF: BRAD DUNCAN, P.E.
DISTRICT NO. (815)-434-6131
CONTRACT NO. 66C73

GROSS LENGTH = 36960.53 FT. = 7.0 MILE
BRIDGE OMISSIONS = 581.46 = 0.11 MILE
NET LENGTH = 36379.07 FT. = 6.89 MILE

STATE OF ILLINOIS
DEPARTMENT OF TRANSPORTATION
DIVISION OF HIGHWAYS

SUBMITTED March 27 2013
Paul A. Costanzo
DEPUTY DIRECTOR OF HIGHWAYS, REGION ENGINEER

May 10 2013
John D. Baranzelli, P.E.
ENGINEER OF DESIGN AND ENVIRONMENT

May 10 2013
Osman Osman, P.E.
DIRECTOR OF HIGHWAYS, CHIEF ENGINEER

**PRINTED BY THE AUTHORITY
OF THE STATE OF ILLINOIS**

GENERAL NOTES

THE ENGINEER WILL BE THE SOLE JUDGE CONCERNING CURING TIME FOR THE MICROSURFACING AND WHEN ROADWAY WILL BE OPENED TO TRAFFIC.

ANY REFERENCE TO A STANDARD IN THESE PLANS SHALL BE INTERPRETED TO MEAN THE EDITION AS INDICATED BY THE SUBNUMBER SHOWN IN THE LIST OF STANDARDS OR THE COPY INCLUDED IN THESE PLANS.

THE AGGREGATES FOR THE SURFACE LIFT OF MICRO-SURFACING SHALL MEET THE FRICTION AGGREGATE REQUIREMENTS FOR MIXTURE D IN ARTICLE 1004.03 (a).

THE FOLLOWING RATES OF APPLICATION HAVE BEEN USED IN CALCULATING PLAN QUANTITIES:

SHORT TERM PAVEMENT MARKING	10	FT /100 FT OF APPLICATION
MIX FOR CRACKS, JTS & FLGWYS	0.0003	TONS / SQ YD
MICROSURFACING, SINGLE PASS	20	POUNDS / SQ YD

ONLY THE PASSING IS TO BE CLOSED FOR THE CENTERLINE WORK.

THE TEMPORARY PAVEMENT MARKING SHALL BE PLACED 3' OFF CENTERLINE IN DRIVING LANE PRIOR TO REMOVING EXISTING LINE.

THE CONTRACTOR SHALL CONTACT JULIE AT LEAST 48 HOURS PRIOR TO EXCAVATION TO DETERMINE WHICH UTILITIES ARE IN THE AREA.

STATE OF ILLINOIS
DEPARTMENT OF TRANSPORTATION
DISTRICT THREE

PREPARED BY: Tom Beovich
DISTRICT STUDIES & PLANS ENGINEER

DATE: 3-27-13

EXAMINED BY: Herbert Jung (ms)
DISTRICT CONSTRUCTION ENGINEER

Ray J. White
DISTRICT MATERIALS ENGINEER

Bruce A. Wheeler
DISTRICT OPERATIONS ENGINEER

FILE NAME :	USER NAME : duncanbd	DESIGNED -	REVISED -
c:\pwork\pwork\duncanbd\0328265\036673-shr-cover.dgn		DRAWN -	REVISED -
	PLOT SCALE = 100.0000' / in.	CHECKED -	REVISED -
	PLOT DATE = 3/26/2013	DATE -	REVISED -

STATE OF ILLINOIS
DEPARTMENT OF TRANSPORTATION

GENERAL NOTES

SCALE: SHEET OF SHEETS STA. TO STA.

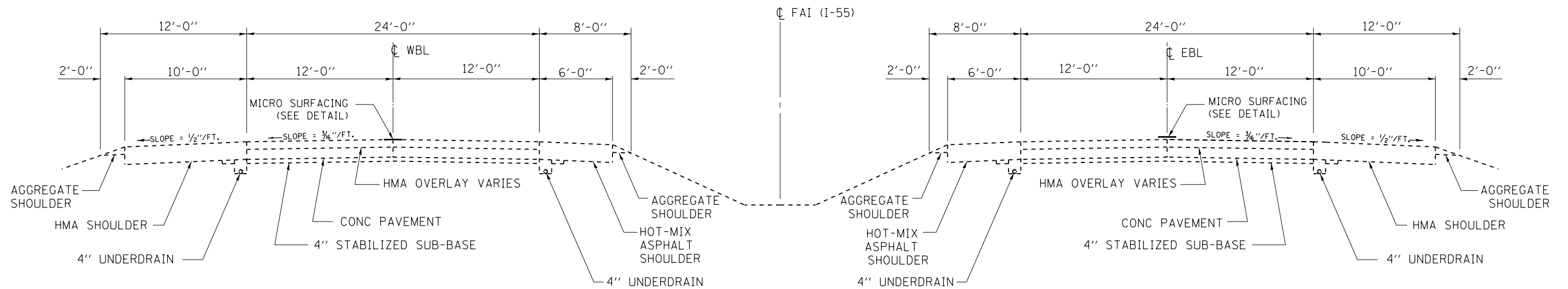
F.A.I. RTE.	SECTION	COUNTY	TOTAL SHEETS	SHEET NO.
55	(32-11)	GRUNDY	7	2
CONTRACT NO. 66C73				
ILLINOIS FED. AID PROJECT				

100 2-2-2013

CODE NO.	ITEM	UNIT	TOTAL QUANTITY	CONSTR. CODE	
				100% STATE	
				ROADWAY	
				0005	
				RURAL	
X4060110	BITUMINOUS MATERIALS (PRIME COAT)	POUND	7276		7276
40600400	MIXTURE FOR CRACKS, JOINTS, AND FLANGEWAYS	TON	46		46
67100100	MOBILIZATION	L SUM	1		1
70106800	CHANGEABLE MESSAGE SIGN	CAL MO	2		2
70300240	TEMPORARY PAVEMENT MARKING - LINE 6"	FOOT	18190		18190
70301000	WORK ZONE PAVEMENT MARKING REMOVAL	SQ FT	9095		9095
△ 78005130	EPOXY PAVEMENT MARKING - LINE 6"	FOOT	18190		18190
△ 78100100	RAISED REFLECTIVE PAVEMENT MARKER	EACH	1818		1818
78300100	PAVEMENT MARKING REMOVAL	SQ FT	9090		9090
78300200	RAISED REFLECTIVE PAVEMENT MARKER REMOVAL	EACH	1818		1818
X0326218	FIBER-MODIFIED ASPHALT CRACK SEALING	FOOT	72758		72758
X0326867	RADAR SPEED TRAILER	CAL MO	1		1
X7010805	TRAFFIC CONTROL AND PROTECTION, STANDARD 701401 (SPECIAL)	L SUM	1		1
Z0063804	MICRO-SURFACING, SINGLE PASS, TYPE II, MIXTURE D	SQ YD	16168		16168

△ SPECIALY ITEMS

FILE NAME :	USER NAME : duncanbd	DESIGNED -	REVISED -	STATE OF ILLINOIS DEPARTMENT OF TRANSPORTATION	SUMMARY OF QUANTITIES				P.A.I. RTE.	SECTION	COUNTY	TOTAL SHEETS	SHEET NO.
c:\pwwork\pvidott\duncanbd\08328265\0366C73-eh1-500.dgn		DRAWN -	REVISED -		55	(32-11)	GRUNDY	7	3				
PLOT SCALE : 1/8" = 100.0000' / 1"	CHECKED -	REVISED -			SCALE: SHEET NO. OF SHEETS STA. TO STA.				CONTRACT NO. 66C73				
PLOT DATE : 3/26/2013	DATE -	REVISED -			ILLINOIS FED. AID PROJECT								



TYPICAL SECTION F.A.I. 55

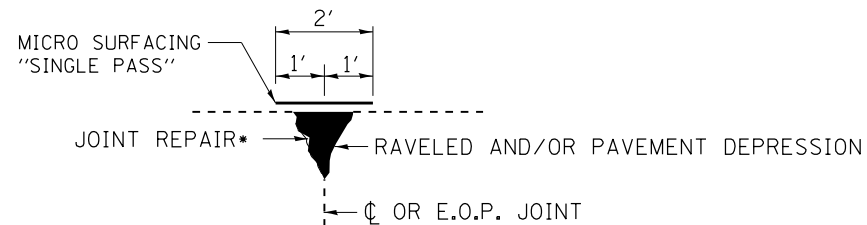
STA. 766+19.41 TO STA. 1167+53.53

OMISSIONS:

S.B.L. STA. 961+58.00 TO STA. 964+65.80

N.B.L. STA. 962+23.20 TO STA. 965+31.00

N.B.L. & S.B.L. STA. 1005+05.17 TO STA. 1007+78.83



MICRO-SURFACING DETAIL

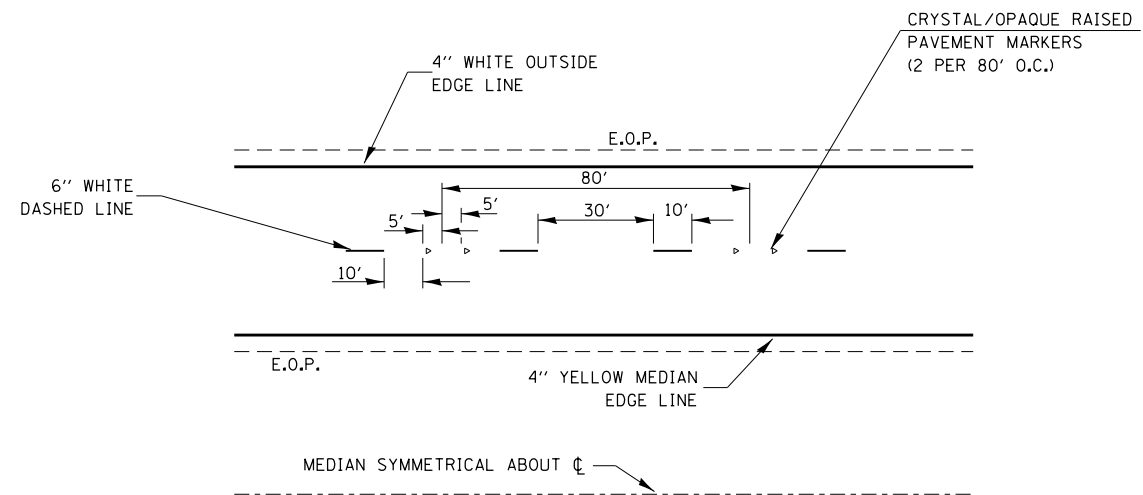
* FIBER-MODIFIED ASPHALT CRACK SEALING

NOTES

- 1) MICRO-SURFACING SHALL BE LOCATED AT THE CENTERLINE OF PAVEMENT JOINT. ACTUAL LOCATIONS SHALL BE FIELD DETERMINED BY THE ENGINEER PRIOR TO THE CONTRACTOR BEGINNING HIS/HER CONSTRUCTION OPERATIONS.
- 2) THE TEMPORARY STRIPING SHALL BE OFFSET 3' FROM THE CENTERLINE, IN THE DRIVING LANE.
- 3) OFFSET OF THE PERMANENT CENTERLINE PAVEMENT STRIPING SHALL BE FIELD DETERMINED BY THE ENGINEER.

FILE NAME =	USER NAME = duncanbd	DESIGNED -	REVISED -	STATE OF ILLINOIS DEPARTMENT OF TRANSPORTATION	TYPICAL SECTION			F.A.I. RTE.	SECTION	COUNTY	TOTAL SHEETS	SHEET NO.
et:\pwork\pwork\dot\duncanbd\0328265\036673-sh-typical.dgn		DRAWN -	REVISED -		55	(32-1)I	GRUNDY	7	4			
PLOT SCALE = 100.0000' / in.		CHECKED -	REVISED -		CONTRACT NO. 66C73							
PLOT DATE = 3/26/2013		DATE -	REVISED -		SCALE:	SHEET	OF	SHEETS	STA.	TO	STA.	ILLINOIS FED. AID PROJECT

MAINLINE												
LOCATION STA. TO STA.	LENGTH	TEMP. PAVMT. MARKING LINE 6"	PVMT. MARKING REMOVAL	RAISED REFL PVMT MARKER REMOVAL	MIX FOR CRACKS, JOINTS, & FLANGEWAYS	FIBER MOD. ASH. CRACK SEALING	BITUMINOUS MATERIALS (PRIME COAT)	MICRO-SURFACING SINGLE PASS TYPE II MIX D	EPOXY PVMT. MARKING LINE 6"	RAISED REFLECTIVE PVMT. MARKER	WORK ZONE PVMT. MARKING REMOVAL	
	FT	FT	SQ FT	EACH	TON	FT	POUND	SQ YD	FT	EACH	SQ FT	
NORTHBOUND												
797+93	962+23.2	16430.2	4108	2055	411	10	16430	1643	3651	4108	411	2054
962+23.2	965+31.0	BRIDGE OMISSION							77			
965+31.0	1005+05.17	3974.1	994	495	99	3	3974	397	883	994	99	497
1005+05.17	1007+78.83	BRIDGE OMISSION							68			
1007+78.83	1167+53.53	15974.7	3994	1995	399	10	15975	1597	3550	3994	399	1997
SOUTHBOUND												
797+93	961+58.0	16365	4091	2045	409	10	16365	1637	3637	4091	409	2046
961+58.0	964+65.8	BRIDGE OMISSION							77			
964+65.8	1005+05.17	4039.37	1010	505	101	3	4039	404	898	1010	101	505
1005+05.17	1007+78.83	BRIDGE OMISSION							68			
1007+78.83	1167+53.53	15974.7	3994	1995	399	10	15975	1597	3550	3994	399	1997
TOTAL			18190	9090	1818	46	72758	7276	16168	18480	1818	9095



TYPICAL PAVEMENT MARKINGS

FILE NAME =	USER NAME = duncanbd	DESIGNED -	REVISED -
et:\pwork\pwork\pwork\duncanbd\0328265\036673-sh1-details.dgn		DRAWN -	REVISED -
	PLOT SCALE = 100.0000' / 1in.	CHECKED -	REVISED -
	PLOT DATE = 3/26/2013	DATE -	REVISED -

**STATE OF ILLINOIS
DEPARTMENT OF TRANSPORTATION**

DETAILS

SCALE: SHEET NO. OF SHEETS STA. TO STA.

F.A.I. RTE.	SECTION	COUNTY	TOTAL SHEETS	SHEET NO.
55	(32-1)I	GRUNDY	7	7
CONTRACT NO. 66C73				
ILLINOIS FED. AID PROJECT				