

**STATE OF ILLINOIS**  
**DEPARTMENT OF TRANSPORTATION**  
**DIVISION OF HIGHWAYS**

**PROPOSED**  
**HIGHWAY PLANS**

**FAI ROUTE 80 (I-80)**  
**SECTION D3 PATCHING 2014-6**

**PAVEMENT PATCHING**  
**GRUNDY COUNTY**

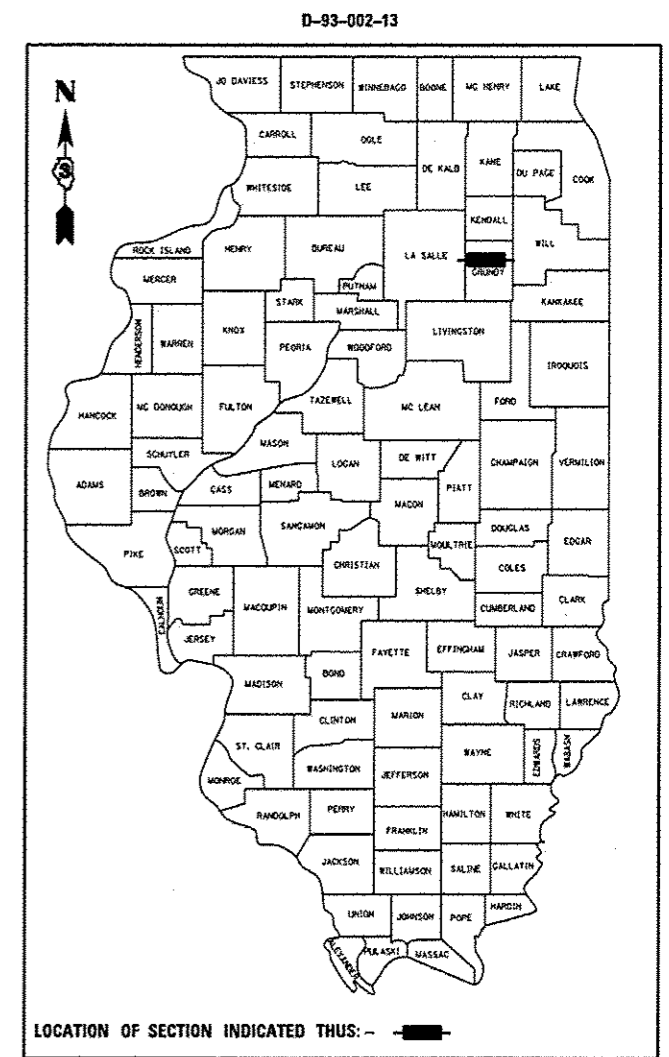
C-93-089-13

**INDEX OF SHEETS**

1. COVER SHEET
2. GENERAL NOTES
3. SUMMARY OF QUANTITIES
4. TYPICAL SECTIONS
- 5 - 6. SCHEDULES
7. TRAFFIC CONTROL AND PROTECTION, STANDARD 701400 (SPECIAL)
- 8 - 10. CLASS A PATCHES
- 11 - 12. PAVEMENT PATCH (EXPANSION)
13. TYPICAL PAVEMENT MARKINGS

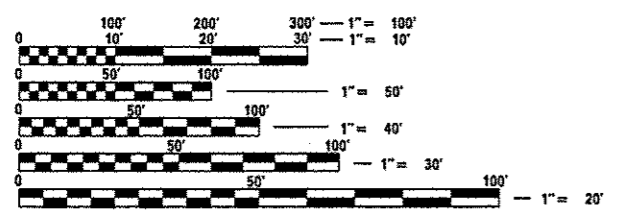
**HIGHWAY STANDARDS**

- |           |   |
|-----------|---|
| 000001-06 | STANDARD SYMBOLS, ABBREVIATIONS AND PATTERNS                                  |
| 001001-02 | AREAS OF REINFORCEMENT BARS   |
| 001006    | DECIMAL OF AN INCH AND OF A FOOT  |
| 420701-02 | PAVEMENT FABRIC   |
| 421001-02 | BAR REINFORCEMENT FOR CRC PAVEMENT  |
| 701101-03 | OFF-ROAD OPERATIONS MULTILANE, 15' (4.5 m) TO 24" (600 mm) FROM PAVEMENT EDGE |
| 701401-07 | LANE CLOSURE, FREEWAY/EXPRESSWAY  |
| 701411-08 | LANE CLOSURE, MULTILANE, AT ENTRANCE OR EXIT RAMP FOR SPEEDS ≥ 45 MPH         |
| 701426-05 | LANE CLOSURE, MULTILANE INTERMITTENT OR MOVING OPERATION, FOR SPEEDS ≥ 45 MPH |
| 701901-02 | TRAFFIC CONTROL DEVICES   |



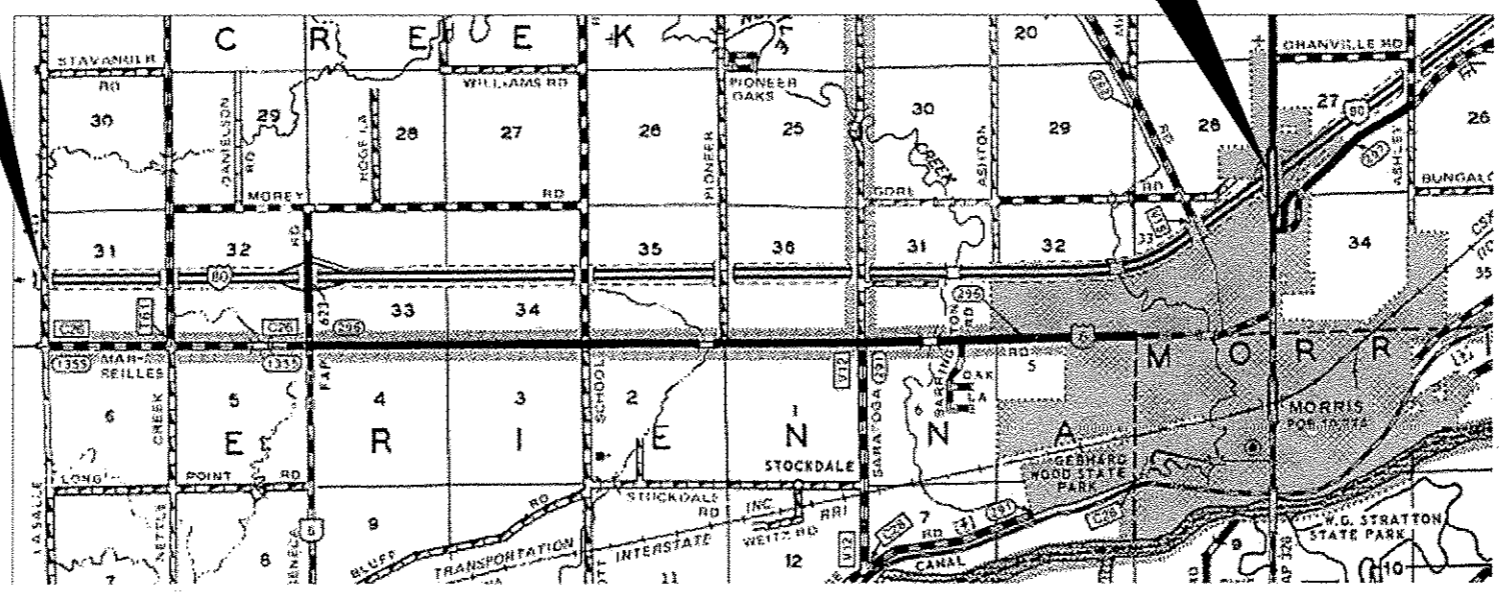
**PROJECT BEGINS**  
**LASALLE COUNTY LINE**  
**(M.P. 102.98)**

**PROJECT ENDS**  
**IL ROUTE 47**  
**(M.P. 112.12)**



FULL SIZE PLANS HAVE BEEN PREPARED USING STANDARD ENGINEERING SCALES. REDUCED SIZED PLANS WILL NOT CONFORM TO STANDARD SCALES. IN MAKING MEASUREMENTS ON REDUCED PLANS, THE ABOVE SCALES MAY BE USED.

J.U.L.I.E.  
 JOINT UTILITY LOCATION INFORMATION FOR EXCAVATION  
 1-800-892-0123  
 OR 811



**LOCATION MAP**  
 NOT TO SCALE

GROSS LENGTH = 48260 FT. = 9.140 MI.  
 NET LENGTH = 264 FT. = 0.050 MI.

**PROJECT ENGINEER: JOE KANNEL P.E.**  
**UNIT CHIEF: RON WOODSHANK**  
**TOWNSHIP: NETTLE CREEK, SARATOGA**  
**CONTRACT NO. 66C95**

RURAL	
INTERSTATE	
FAI 80 (I-80)	
2011	
ADT	28100
P.V.	66.72%
S.U.	4.45%
M.U.	28.83%

STATE OF ILLINOIS  
 DEPARTMENT OF TRANSPORTATION  
 DIVISION OF HIGHWAYS

SUBMITTED Paul A. Tata  
 DEPUTY DIRECTOR OF HIGHWAYS, REGION ENGINEER

May 10 2013  
John D. Baranzelli, P.E.  
 acting ENGINEER OF DESIGN AND ENVIRONMENT

May 10 2013  
Omer Osman, P.E.  
 DIRECTOR OF HIGHWAYS, CHIEF ENGINEER

**PRINTED BY THE AUTHORITY**  
**OF THE STATE OF ILLINOIS**