

1. COVER SHEET
2. GENERAL NOTES
3. SUMMARY OF QUANTITIES
4. TYPICAL SECTIONS
- 5 - 8. SCHEDULES
9. TRAFFIC CONTROL AND PROTECTION, STANDARD 701400 (SPECIAL)
- 10 - 12. CLASS A PATCHES
13. TYPICAL PAVEMENT MARKINGS

DEPARTMENT OF TRANSPORTATION

DIVISION OF HIGHWAYS

PROPOSED HIGHWAY PLANS

FAI ROUTE 55 (I-55)

SECTION D3 PATCHING 2014-8

PAVEMENT PATCHING

GRUNDY COUNTY

C-93-100-13

PROJECT ENDS
WILL COUNTY LINE
(M.P. 233.49)



LOCATION OF SECTION INDICATED THUS: - [thick black line] -

RURAL	
INTERSTATE	
FAI 55 (I-55)	
2011	
ADT	23400
P.V.	64.59%
S.U.	11.73%
M.U.	23.68%

STATE OF ILLINOIS
DEPARTMENT OF TRANSPORTATION
DIVISION OF HIGHWAYS

SUBMITTED 4-3-2013
Paul A. Tanton
DEPUTY DIRECTOR OF HIGHWAYS, REGION ENGINEER

May 10 2013
John D. Baramelli, P.E.
ENGINEER OF DESIGN AND ENVIRONMENT

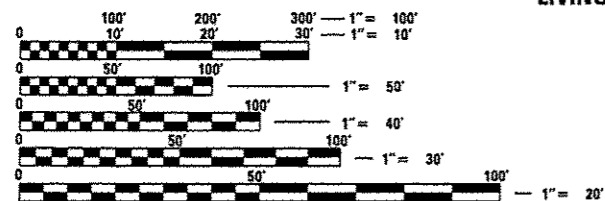
May 10 2013
Omair Osman, P.E.
DIRECTOR OF HIGHWAYS, CHIEF ENGINEER

PRINTED BY THE AUTHORITY
OF THE STATE OF ILLINOIS

HIGHWAY STANDARDS

- | | |
|-----------|---|
| 000001-06 | STANDARD SYMBOLS, ABBREVIATIONS AND PATTERNS |
| 001001-02 | AREAS OF REINFORCEMENT BARS |
| 001006 | DECIMAL OF AN INCH AND OF A FOOT |
| 420701-02 | PAVEMENT FABRIC |
| 421001-02 | BAR REINFORCEMENT FOR CRC PAVEMENT |
| 701101-03 | OFF-ROAD OPERATIONS MULTILANE, 15' (4.5 m) TO 24" (600 mm) FROM PAVEMENT EDGE |
| 701401-07 | LANE CLOSURE, FREEWAY/EXPRESSWAY |
| 701411-08 | LANE CLOSURE, MULTILANE, AT ENTRANCE OR EXIT RAMP FOR SPEEDS ≥ 45 MPH |
| 701426-05 | LANE CLOSURE, MULTILANE INTERMITTENT OR MOVING OPERATION, FOR SPEEDS ≥ 45 MPH |
| 701901-02 | TRAFFIC CONTROL DEVICES |

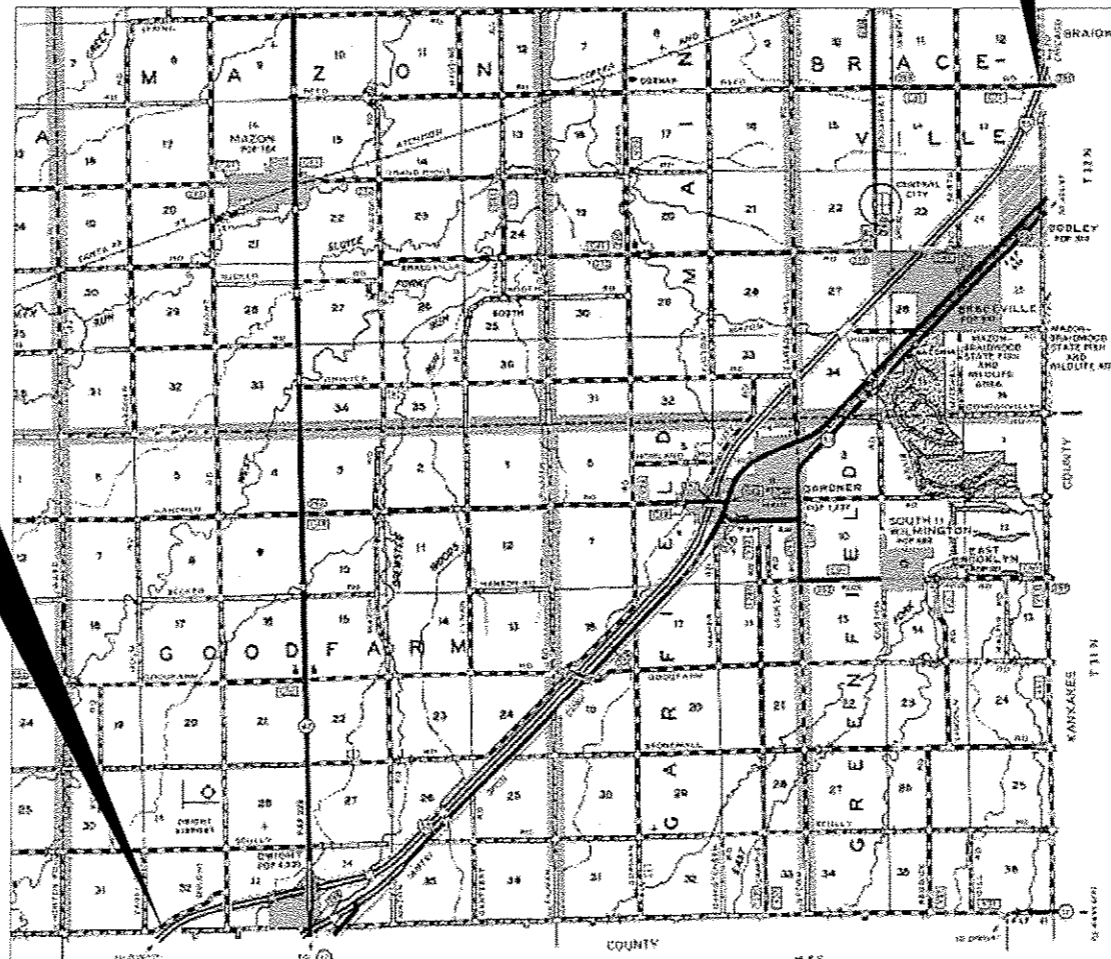
PROJECT BEGINS
LIVINGSTON COUNTY LINE
(M.P. 218.07)



FULL SIZE PLANS HAVE BEEN PREPARED USING STANDARD ENGINEERING SCALES. REDUCED SIZED PLANS WILL NOT CONFORM TO STANDARD SCALES. IN MAKING MEASUREMENTS ON REDUCED PLANS, THE ABOVE SCALES MAY BE USED.

J.U.L.I.E.
JOINT UTILITY LOCATION INFORMATION FOR EXCAVATION
1-800-892-0123
OR 811

PROJECT ENGINEER: JOE KANNEL P.E.
UNIT CHIEF: RON WOODSHANK
TOWNSHIP: VARIOUS
CONTRACT NO. 66D02



LOCATION MAP
NOT TO SCALE
GROSS LENGTH = 8149 FT. = 15.420 MI.
NET LENGTH = 684 FT. = 0.131 MI.

GENERAL NOTES

PLAN DIMENSIONS AND DETAILS RELATIVE TO EXISTING PLANS ARE SUBJECT TO NOMINAL CONSTRUCTION VARIATIONS. THE CONTRACTOR SHALL FIELD VERIFY EXISTING DIMENSIONS AND DETAILS AFFECTING NEW CONSTRUCTION AND MAKE NECESSARY APPROVED ADJUSTMENTS PRIOR TO CONSTRUCTION OR ORDERING OF MATERIALS. SUCH VARIATIONS SHALL NOT BE CAUSE FOR ADDITIONAL COMPENSATION FOR A CHANGE IN SCOPE OF WORK; HOWEVER, THE CONTRACTOR WILL BE PAID FOR THE QUANTITY ACTUALLY FURNISHED AT THE UNIT PRICE BID FOR THE WORK.

FOR STABILIZATION, ALL TYPE III BARRICADES WILL REQUIRE A MINIMUM OF FOUR SAND BAGS PER BARRICADE.

ANY REFERENCE TO A STANDARD IN THESE PLANS SHALL BE INTERPRETED TO MEAN THE EDITION AS INDICATED BY THE SUBNUMBER SHOWN IN THE LIST OF STANDARDS OR THE COPY INCLUDED IN THESE PLANS.

THE CONTRACTOR SHALL CONTACT JULIE AT LEAST 48 HOURS PRIOR TO EXCAVATION TO DETERMINE WHICH UTILITIES ARE IN THE AREA.

COMMITMENTS

DISPOSAL OF EXCAVATED MATERIALS. ALL UNSUITABLE OR UNSTABLE MATERIALS, DEFINED AS SOILS, EMBANKMENTS, SUB-BASE GRANULAR MATERIALS, AND/OR AGGREGATE MATERIALS THAT ARE EXCAVATED DUE TO CONSTRUCTION OPERATIONS SHALL BE DISPOSED OF WITHIN THE LIMITS OF THE EXISTING RIGHT OF WAY. DISPOSAL OF EXCAVATED MATERIALS, AS DEFINED ABOVE, OFF THE EXISTING RIGHT OF WAY SHALL NOT BE PERMITTED.

EXCAVATED MATERIALS SHALL BE DISPOSED OF AT LOCATIONS DIRECTED BY THE ENGINEER. ANY SUCH DISPOSAL SHALL NOT CREATE AND UNSIGHTLY OR OBJECTIONABLE APPEARANCE OR DETRACT FROM THE NATURAL TOPOGRAPHIC FEATURES WITHOUT WRITTEN PERMISSION FROM THE ENGINEER.

DATE: 4-3-2013

PREPARED BY: Dave Brannan
DISTRICT STUDIES & PLANS ENGINEER

EXAMINED BY: [Signature]
DISTRICT CONSTRUCTION ENGINEER

Wayne L. Phillips
DISTRICT MATERIALS ENGINEER

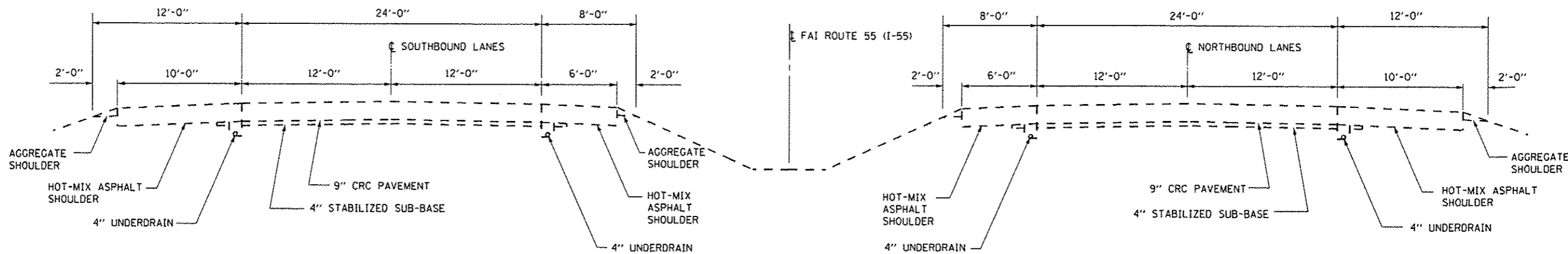
[Signature]
DISTRICT OPERATIONS ENGINEER

FILE NAME *	USER NAME * petelyj	DESIGNED - RW	REVISED -	STATE OF ILLINOIS DEPARTMENT OF TRANSPORTATION	TYPICAL SECTIONS	F.A.I. RTE.	SECTION	COUNTY	TOTAL SHEETS	SHEET NO.
c:\pv-work\pvidat\petelyj\08337540\0366495-shr-details.dgn	DRAWN - RW	REVISED -	55			03 PATCHING 2014-8	GRUNDY	13	2	
PLOT SCALE * 100.0000' / 1" =	CHECKED -	REVISED -	CONTRACT NO. 66002							
PLOT DATE * 4/3/2013	DATE -	REVISED -	SCALE:			SHEET NO. 1 OF 1 SHEETS	STA. TO STA.	ILLINOIS FED. AID PROJECT		

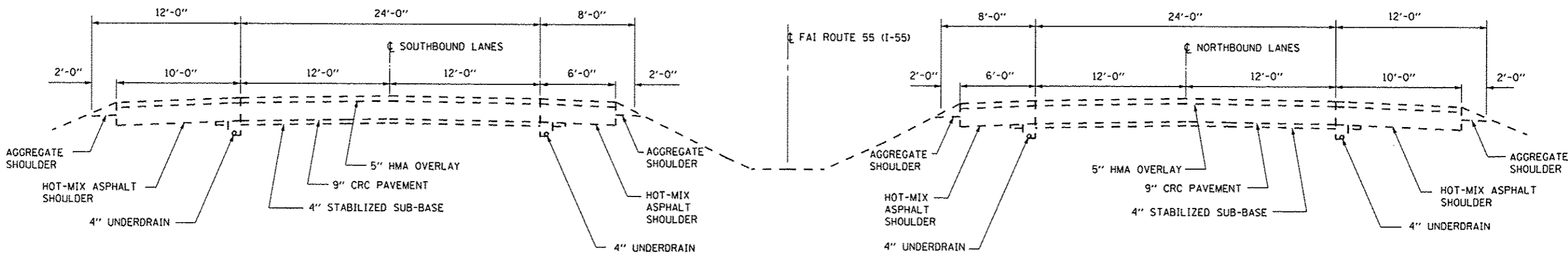
CODE NO.	ITEM	UNIT	CONSTR. CODE
			STATE
			100%
			ROADWAY
			0005
			RURAL
44200610	CLASS A PATCHES, TYPE II, 13 INCH	SQ YD	899
44213000	PATCH REINFORCEMENT	SQ YD	899
44213100	PAVEMENT FABRIC	SQ YD	899
44213200	SAW CUTS	FOOT	5240
67100100	MOBILIZATION	L SUM	1
70100420	TRAFFIC CONTROL AND PROTECTION, STANDARD 701411	EACH	8
70103815	TRAFFIC CONTROL SURVEILLANCE	CAL DAY	15
* 78009004	MODIFIED URETHANE PAVEMENT MARKING LINE 4"	FOOT	676
* 78009006	MODIFIED URETHANE PAVEMENT MARKING LINE 6"	FOOT	960
X0326867	RADAR SPEED TRAILER	CAL MO	1
X0326880	MESSAGE BOARD VEHICLE DRIVER	HOUR	100
X0326907	PORTABLE, VEHICLE MOUNTED, CHANGEABLE MESSAGE SIGN	CAL MO	1
X7010805	TRAFFIC CONTROL AND PROTECTION, STANDARD 701401 (SPECIAL)	L SUM	1

• SPECIALITY ITEMS

FILE NAME -	USER NAME - petelyj	DESIGNED - RW	REVISED -	STATE OF ILLINOIS DEPARTMENT OF TRANSPORTATION	TYPICAL SECTIONS	F.A.I. RTE.	SECTION	COUNTY	TOTAL SHEETS	SHEET NO.	
c:\ps_work\pvidat\petelyj\08337548\03866	99-shr-details.dgn	DRAWN - RW	REVISED -			55	D3 PATCHING 2014-8	GRUNDY	13	3	
	PLOT SCALE - 1/8" = 1' / in.	CHECKED -	REVISED -			SCALE: SHEET NO. 1 OF 1 SHEETS STA. TO STA.		CONTRACT NO. 66002			
	PLOT DATE - 4/3/2013	DATE -	REVISED -			ILLINOIS FED. AID PROJECT					



**TYPICAL SECTION
MAINLINE**
M.M. 218.07 TO M.M. 221.10



**TYPICAL SECTION
MAINLINE**
M.M. 221.10 TO M.M. 233.49

FILE NAME =	USER NAME = pately.j	DESIGNED - RW	REVISED -	STATE OF ILLINOIS DEPARTMENT OF TRANSPORTATION	TYPICAL SECTIONS			F.A.I. RTE.	SECTION	COUNTY	TOTAL SHEETS	SHEET NO.
c:\pwwork\pately\0337548\036645-shd-details.dgn		DRAWN - RW	REVISED -		55	D3 PATCHING 2014-B	GRUNDY	13	4			
PLOT SCALE = 1/8" = 1'-0"		CHECKED -	REVISED -		CONTRACT NO. 66D02							
PLOT DATE = 4/3/2013		DATE -	REVISED -		SCALE:	SHEET NO. 1 OF 1 SHEETS	STA.	TO STA.	ILLINOIS FED. AID PROJECT			

SCHEDULES
CLASS A PATCHES
NORTHBOUND LANES

LOCATION MILE POST	PASS LANE FEET	DRIVE LANE FEET	PASSING LANE				DRIVING LANE			
			TYPE II 13" SQ YD	PATCH REINF. SQ YD	PAV'T FABRIC SQ YD	SAW CUTS FOOT	TYPE II 13" SQ YD	PATCH REINF. SQ YD	PAV'T FABRIC SQ YD	SAW CUTS FOOT
218.40		10					13	13	13	56
218.55		6					8	8	8	48
218.70		6					8	8	8	48
219.70		6					8	8	8	48
219.73		6					8	8	8	48
219.75		6					8	8	8	48
219.90		6					8	8	8	48
220.10		6					8	8	8	48
220.45		6					8	8	8	48
220.50		6					8	8	8	48
220.54	6		8	8	8	48				
220.60		6					8	8	8	48
220.82		6					8	8	8	48
221.20		6					8	8	8	48
224.40	6		8	8	8	48				
224.50	6	6	8	8	8	48	8	8	8	48
224.65		6					8	8	8	48
226.30		6					8	8	8	48
226.98	6	6	8	8	8	48	8	8	8	48
227.20	6	6	8	8	8	48	8	8	8	48
227.75	6	6	8	8	8	48	8	8	8	48
228.25		6					8	8	8	48
229.01	6	6	8	8	8	48	8	8	8	48
229.10	6	6	8	8	8	48	8	8	8	48
229.98	6	6	8	8	8	48	8	8	8	48
230.40		6					8	8	8	48
230.98		6					8	8	8	48
231.15		6					8	8	8	48
231.56	6	6	8	8	8	48	8	8	8	48
231.60		6					8	8	8	48
231.61		6					8	8	8	48
232.05	10	6	13	13	13	56	8	8	8	48
231.10		6					8	8	8	48
231.20		6					8	8	8	48
232.30		6					8	8	8	48
232.32		6					8	8	8	48
232.35		6					8	8	8	48
232.45		6					8	8	8	48
232.50		6					8	8	8	48
232.54		6					8	8	8	48
232.55		10					13	13	13	56
232.57		6					8	8	8	48
232.58		6					8	8	8	48
232.59		10					13	13	13	56
232.60		6					8	8	8	48
232.61		6					8	8	8	48
232.68		6					8	8	8	48
232.70		6					8	8	8	48
232.72		6					8	8	8	48
232.73		6					8	8	8	48
232.78		6					8	8	8	48
232.85		6					8	8	8	48
NB TOTALS	70	312	93	93	93	536	415	415	415	2424

FILE NAME =	USER NAME = poteluj	DESIGNED - RW	REVISED -	STATE OF ILLINOIS DEPARTMENT OF TRANSPORTATION	SCHEDULES	F.A.I. RTE.	SECTION	COUNTY	TOTAL SHEETS	SHEET NO.	
ca:\pwork\p\p\poteluj\08337548\0366	95-shi-detail.dgn	DRAWN - RW	REVISED -			55	D3 PATCHING 2014-B	GRUNDY	13	5	
	PLOT SCALE = 100.0000' / 1"	CHECKED -	REVISED -			SCALE:		SHEET NO. 1 OF 1 SHEETS		STA.	TO STA.
	PLOT DATE = 4/3/2013	DATE -	REVISED -			ILLINOIS REG. AID PROJECT CONTRACT NO. 66D02					

SCHEDULES
CLASS A PATCHES
SOUTHBOUND LANES

LOCATION MILE POST	PASS LANE FEET	DRIVE LANE FEET	PASSING LANE				DRIVING LANE			
			TYPE II 13" SQ YD	PATCH REINF. SQ YD	PAV'T FABRIC SQ YD	SAW CUTS FOOT	TYPE II 13" SQ YD	PATCH REINF. SQ YD	PAV'T FABRIC SQ YD	SAW CUTS FOOT
232.85		6					8	8	8	48
232.80		10					13	13	13	56
232.45		6					8	8	8	48
232.43	10		13	13	13	56				
232.42		10					13	13	13	56
232.40		6					8	8	8	48
232.30		6					8	8	8	48
232.20		6					8	8	8	48
232.19		6					8	8	8	48
232.18		6					8	8	8	48
232.15		6					8	8	8	48
231.90		6					8	8	8	48
231.15		6					8	8	8	48
230.01	6	6	8	8	8	48	8	8	8	48
229.98		6					8	8	8	48
226.30		6					8	8	8	48
226.25		6					8	8	8	48
225.95		6					8	8	8	48
225.80		6					8	8	8	48
225.70		6					8	8	8	48
225.60		6					8	8	8	48
224.80		6					8	8	8	48
224.60		6					8	8	8	48
224.50		6					8	8	8	48
224.40		6					8	8	8	48
224.30		6					8	8	8	48
224.28		6					8	8	8	48
223.90		6					8	8	8	48
223.70		6					8	8	8	48
223.05		6					8	8	8	48
222.10		6					8	8	8	48
221.90		6					8	8	8	48
221.85		6					8	8	8	48
221.80	6	6	8	8	8	48	8	8	8	48
221.65		6					8	8	8	48
220.95		6					8	8	8	48
220.90	6	6	8	8	8	48	8	8	8	48
220.50		6					8	8	8	48
219.81		6					8	8	8	48
219.78		6					8	8	8	48
219.77		6					8	8	8	48
219.10		6					8	8	8	48
219.05		6					8	8	8	48
218.70		6					8	8	8	48
218.65		6					8	8	8	48
218.60		6					8	8	8	48
218.55		6					8	8	8	48
SB TOTALS	28	284	37	37	37	200	378	378	378	2224

SCHEDULE
PAVEMENT MARKING
NORTHBOUND LANES

LOCATION MILE POST	MODIFIED URETHANE PAVEMENT MARKING LINE 4" FEET		MODIFIED URETHANE PAVEMENT MARKING LINE 6" FEET
	YELLOW	WHITE	WHITE
	218.40		10
218.55		6	10
218.70		6	10
219.70		6	10
219.73		6	10
219.75		6	10
219.90		6	10
220.10		6	10
220.45		6	10
220.50		6	10
220.54	6		10
220.60		6	10
220.82		6	10
221.20		6	10
224.40	6		10
224.50	6	6	10
224.65		6	10
226.30		6	10
226.98	6	6	10
227.20	6	6	10
227.75	6	6	10
228.25		6	10
229.01	6	6	10
229.10	6	6	10
229.98	6	6	10
230.40		6	10
230.98		6	10
231.15		6	10
231.56	6	6	10
231.60		6	10
231.61		6	10
232.05	10	6	10
231.10		6	10
231.20		6	10
232.30		6	10
232.32		6	10
232.35		6	10
232.45		6	10
232.50		6	10
PAGE 1 TOTAL	70	226	390

SCHEDULE
PAVEMENT MARKING
NORTHBOUND LANES

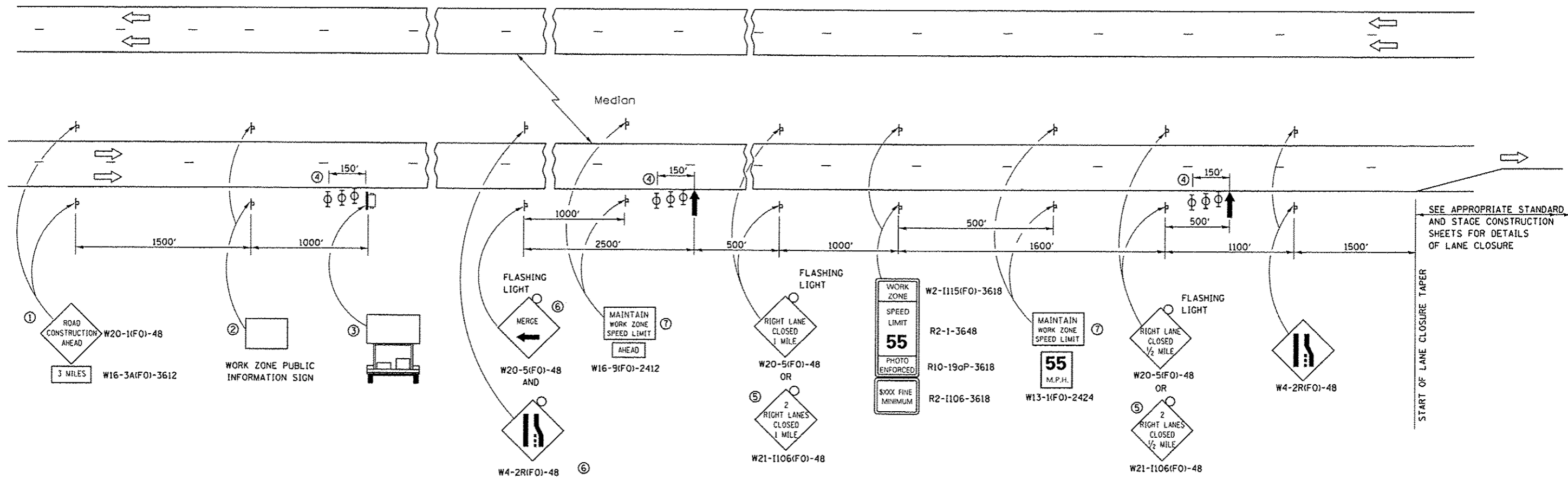
LOCATION MILE POST	MODIFIED URETHANE PAVEMENT MARKING LINE 4" FEET		MODIFIED URETHANE PAVEMENT MARKING LINE 6" FEET
	YELLOW	WHITE	WHITE
	232.54		6
232.55		10	10
232.57		6	10
232.58		6	10
232.59		10	10
232.60		6	10
232.61		6	10
232.68		6	10
232.70		6	10
232.72		6	10
232.73		6	10
232.78		6	10
232.85		6	10
PAGE 2 TOTAL		68	100
NB TOTALS	364		490

SCHEDULE
PAVEMENT MARKING
SOUTHBOUND LANES

LOCATION MILE POST	MODIFIED URETHANE PAVEMENT MARKING LINE 4"		MODIFIED URETHANE PAVEMENT MARKING LINE 6"
	FEET		FEET
	YELLOW	WHITE	WHITE
232.85		6	10
232.80		10	10
232.45		6	10
232.43	10		10
232.42		10	10
232.40		6	10
232.30		6	10
232.20		6	10
232.19		6	10
232.18		6	10
232.15		6	10
231.90		6	10
231.15		6	10
230.01	6	6	10
229.98		6	10
226.30		6	10
226.25		6	10
225.95		6	10
225.80		6	10
225.70		6	10
225.60		6	10
224.80		6	10
224.60		6	10
224.50		6	10
224.40		6	10
224.30		6	10
224.28		6	10
223.90		6	10
223.70		6	10
223.05		6	10
222.10		6	10
221.90		6	10
221.85		6	10
221.80	6	6	10
221.65		6	10
220.95		6	10
220.90	6	6	10
220.50		6	10
219.81		6	10
PAGE 1 TOTAL	28	236	390

SCHEDULE
PAVEMENT MARKING
SOUTHBOUND LANES

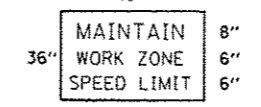
LOCATION MILE POST	MODIFIED URETHANE PAVEMENT MARKING LINE 4"		MODIFIED URETHANE PAVEMENT MARKING LINE 6"
	FEET		FEET
	YELLOW	WHITE	WHITE
219.78		6	10
219.77		6	10
219.10		6	10
219.05		6	10
218.70		6	10
218.65		6	10
218.60		6	10
218.55		6	10
PAGE 2 TOTAL		48	80
SB TOTALS	312		470



SEE APPROPRIATE STANDARD AND STAGE CONSTRUCTION SHEETS FOR DETAILS OF LANE CLOSURE

- ① THE ROAD CONSTRUCTION AHEAD SIGN SHALL BE LOCATED 3 MILES IN ADVANCE OF THE PROJECT LIMITS.
- ② THE MESSAGE AND SIZE OF THE WORK ZONE PUBLIC INFORMATION SIGN SHALL BE AS SPECIFIED BY THE DEPARTMENT.
- ③ TO BE PLACED IN THE MEDIAN WHEN FEASIBLE. THE MESSAGE BOARD SHALL BE USED TO DISPLAY STATUS OF LANES WITHIN THE PROJECT. THE PRIMARY MESSAGES SHALL BE:
"RIGHT LANE CLOSED" / " x MILES AHEAD"
"LEFT LANE CLOSED" / " x MILES AHEAD"
"ALL LANES OPEN"
- ④ THREE, TYPE II BARRICADES, DRUMS, OR VERTICAL BARRICADES AT 50' CENTERS.
- ⑤ THIS SIGN SHALL BE USED WHEN 2 LANES ARE CLOSED.
- ⑥ WHEN THE LEFT LANE IS CLOSED, SWITCH THESE TWO SIGNS AND THE DIRECTION OF THE MERGE ARROW.

⑦ 48"x36" FLUORESCENT ORANGE SIGN WITH BLACK LETTERS.



- ↑ ARROW BOARD
- PORTABLE CHANGEABLE MESSAGE SIGN
- ⊥ SIGN
- ⊕ TYPE II BARRICADE, DRUM, OR VERTICAL BARRICADE WITH MONODIRECTIONAL FLASHING LIGHT

GENERAL NOTE:

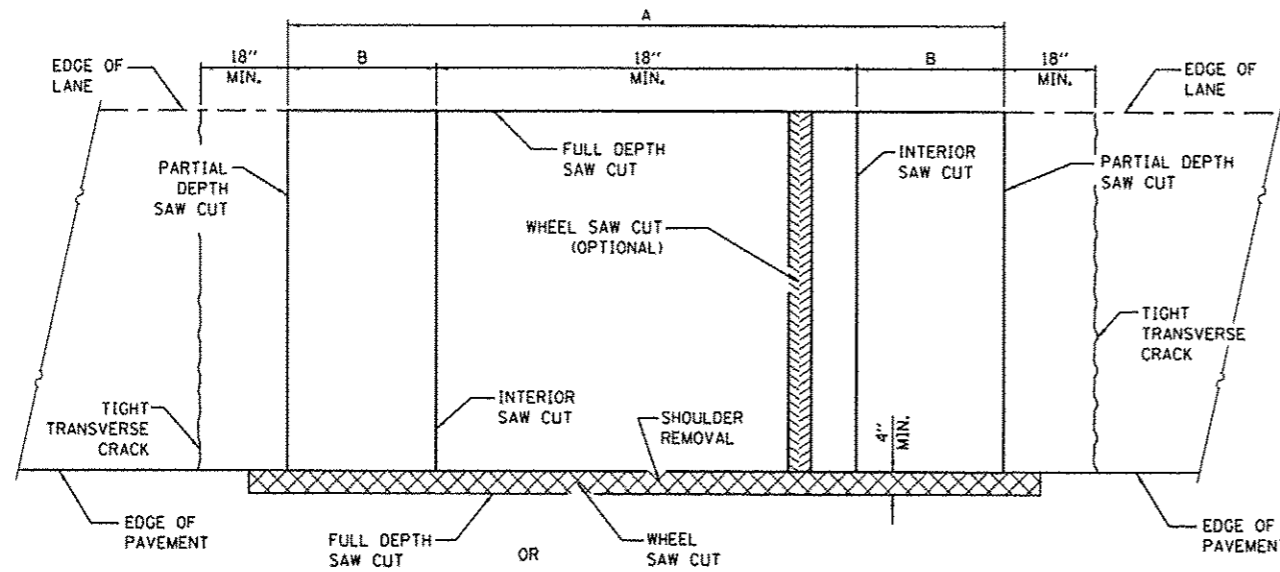
THIS STANDARD IS USED WHERE AT ANY TIME A LANE IS CLOSED ON A FREEWAY/EXPRESSWAY.

WHEN THE LEFT LANE IS CLOSED, LEFT LANE CLOSED SIGNS SHALL BE SUBSTITUTED FOR THE RIGHT LANE CLOSED SIGNS.

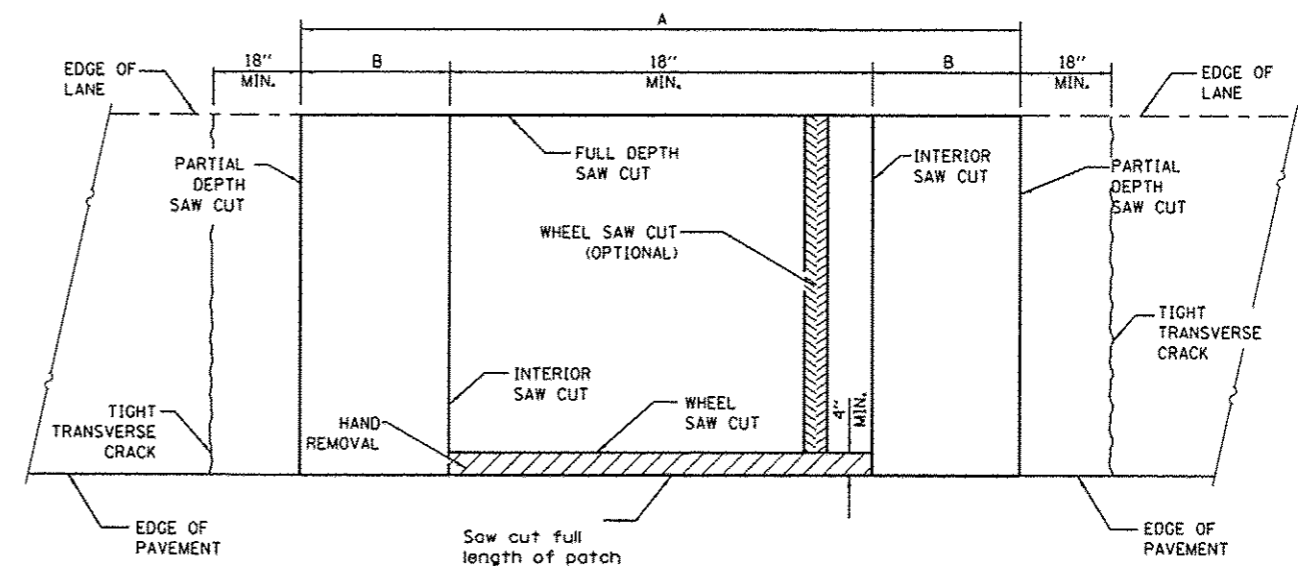
THE FIRST TWO SIGNS AND THE MESSAGE BOARD ARE STATIONARY. THE OTHER SIGNS AND ARROWBOARDS SHALL BE MOVED AS NECESSARY TO MAINTAIN THE REQUIRED DISTANCE FROM THE START OF THE LANE CLOSURE TAPER(S).

SEE SPECIAL PROVISIONS.

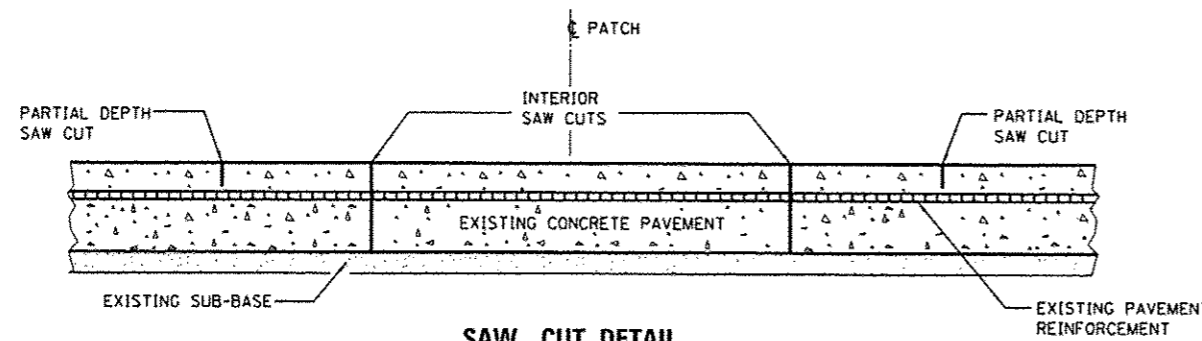
FILE NAME =	USER NAME = potelyj	DESIGNED - RW	REVISED -	STATE OF ILLINOIS DEPARTMENT OF TRANSPORTATION	TYPICAL SECTIONS	F.A.T. RTE.	SECTION	COUNTY	TOTAL SHEETS	SHEET NO.	
c:\pvc\work\pvc\potelyj\0337548\0368	95-shd-details.dgn	DRAWN - RW	REVISED -			55	D3 PATCHING 2014-8	GRUNDY	13	9	
	PLOT SCALE = 1/8" = 1' / in.	CHECKED -	REVISED -			CONTRACT NO. 66D02					
	PLOT DATE = 4/3/2013	DATE -	REVISED -			[ILLINOIS] FED. AID PROJECT					



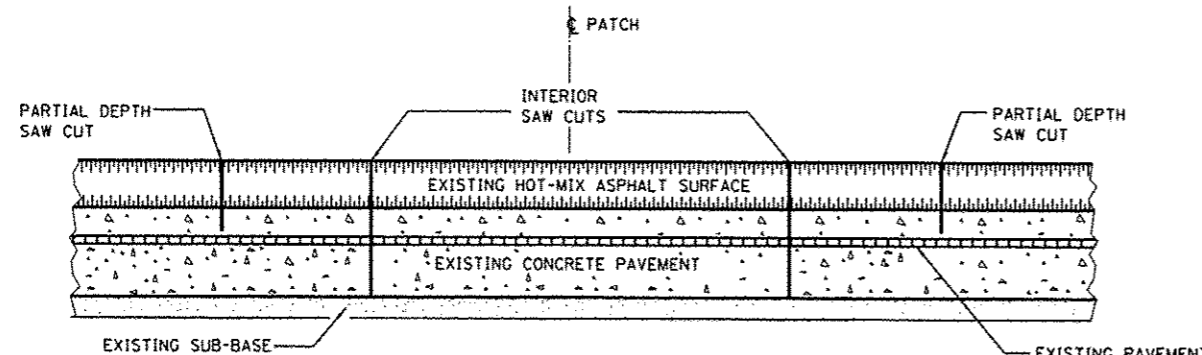
PAVEMENT SAWING DETAIL
(HMA SHOULDER)



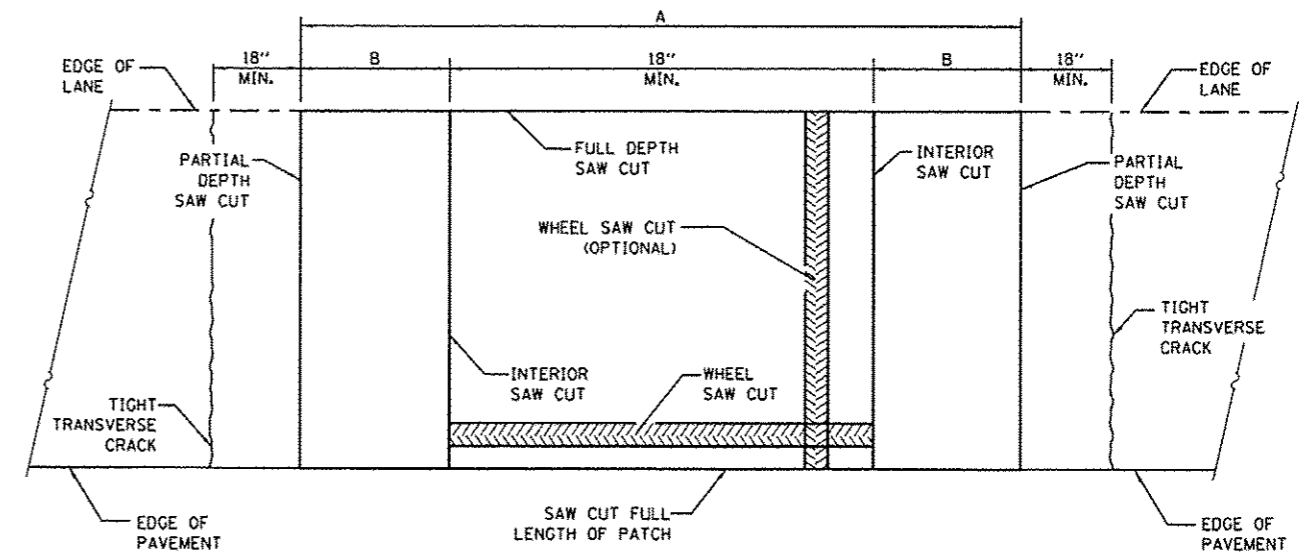
PAVEMENT SAWING DETAIL
(PCC SHOULDER)



SAW CUT DETAIL
WITHOUT HMA SURFACE



SAW CUT DETAIL
WITH HMA SURFACE



ALTERNATE SAWING DETAIL
(PCC SHOULDER)

EXISTING REINFORCEMENT BARS	A (MIN.)	B (MIN.)	C (MIN.)
#5	4'-6"	18"	16"
#6	5'-0"	21"	19"
#7	5'-6"	24"	22"
FABRIC	5'-0"	21"	18"

GENERAL NOTES

WHEN PATCHING TWO ADJACENT LANES IN ONE OPERATION THE LONGITUDINAL JOINT SHALL BE LONGITUDINAL SAWED JOINT AS DETAILED ON STANDARD 420001, HOWEVER, THE GROOVE MAYBE EITHER PREFORMED OR SAWED.

SEE STANDARD 421001 FOR DETAILS OF PAVEMENT REINFORCEMENT.

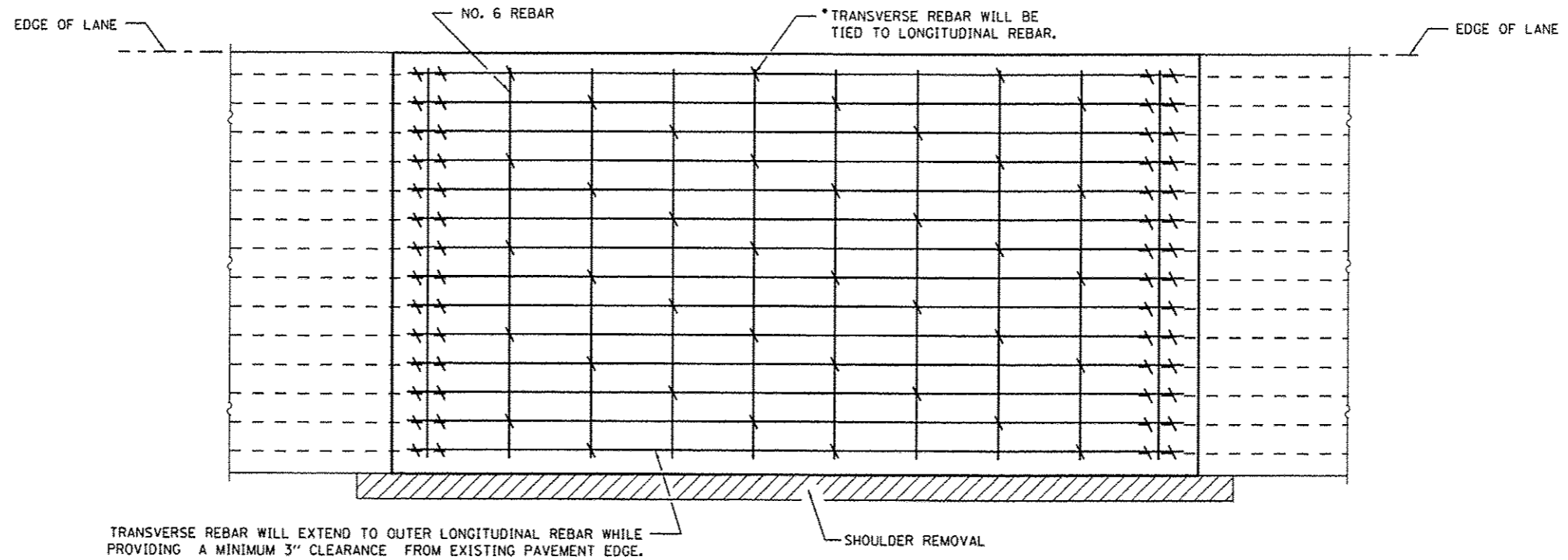
FILE NAME =	USER NAME = patelvj	DESIGNED - RW	REVISED -
c:\p\work\pav\dot\patelvj\0337548\036695-shr-detail.dgn		DRAWN - RW	REVISED -
PLOT SCALE = 1/80.0000' / 1"		CHECKED -	REVISED -
PLOT DATE = 4/3/2013		DATE -	REVISED -

STATE OF ILLINOIS
DEPARTMENT OF TRANSPORTATION

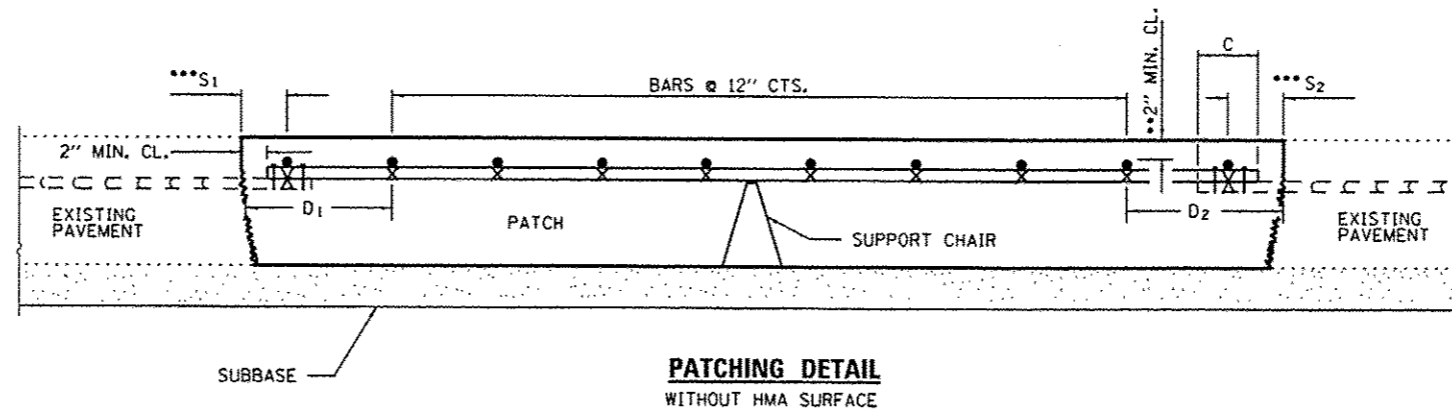
TYPICAL SECTIONS

SCALE: SHEET NO. 1 OF 1 SHEETS STA. TO STA.

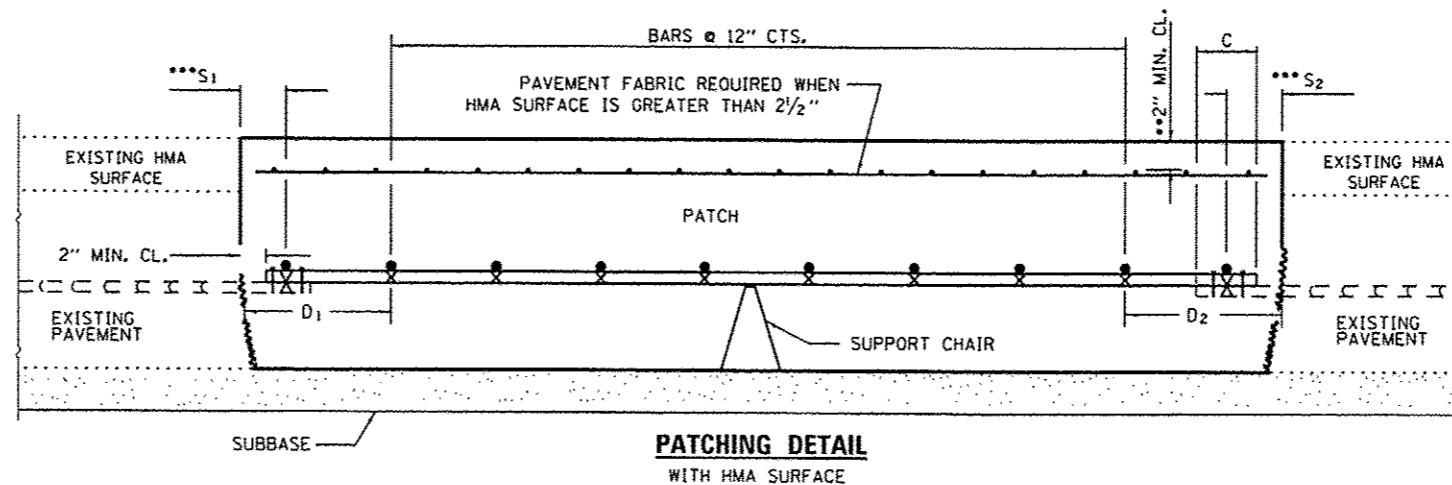
F.A.T. RTE.	SECTION	COUNTY	TOTAL SHEETS	SHEET NO.
55	D3 PATCHING 2014-B	GRUNDY	13	10
CONTRACT NO. 66D02				
ILLINOIS FED. AID PROJECT				



PAVEMENT REINFORCEMENT DETAIL



**PATCHING DETAIL
WITHOUT HMA SURFACE**



**PATCHING DETAIL
WITH HMA SURFACE**

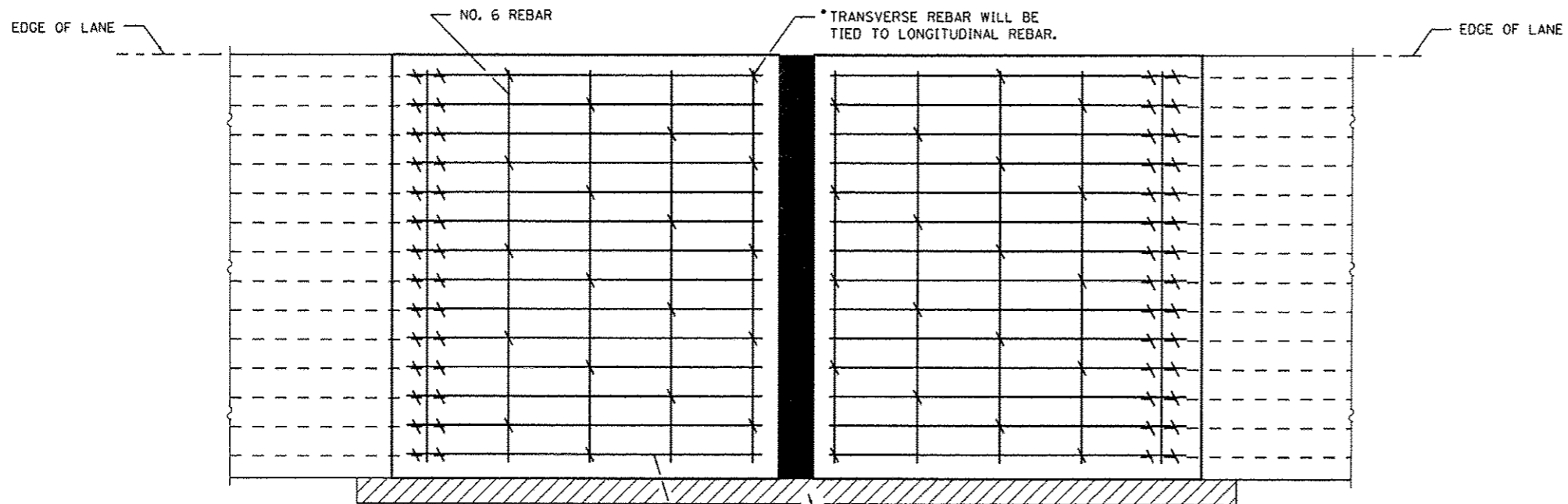
- EVERY 3rd INTERSECTION MUST BE TIED.
- WHEN THE MINIMUM CLEARANCE CANNOT BE OBTAINED WITH THE TRANSVERSE REBAR ON TOP, THEN THE TRANSVERSE REBAR SHALL BE TIED TO THE BOTTOM OF THE LONGITUDINAL REBAR.
- VARIABLES: WHERE S₁ AND S₂ ARE 2 1/2" MIN. AND 12" MAX. D₁ = 2(S₁) AND D₂ = 2(S₂).

FILE NAME =	USER NAME = peteljs	DESIGNED - RW	REVISED -
et\pov\work\pavidot\peteljs\d0337548\0366	93-shl-date11.dgn	DRAWN - RW	REVISED -
	PLOT SCALE = 100.0000' / in.	CHECKED -	REVISED -
	PLOT DATE = 4/3/2013	DATE -	REVISED -

**STATE OF ILLINOIS
DEPARTMENT OF TRANSPORTATION**

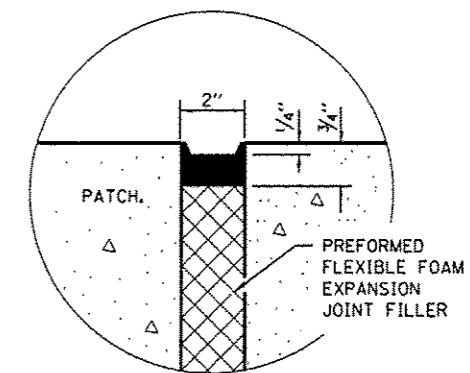
TYPICAL SECTIONS	
SCALE:	TO STA.
SHEET NO. 1 OF 1 SHEETS	STA. TO STA.

F.A.I. RTE.	SECTION	COUNTY	TOTAL SHEETS	SHEET NO.
55	D3 PATCHING 2014-8	GRUNDY	13	11
CONTRACT NO. 66D02				
[ILLINOIS] FED. AID PROJECT				

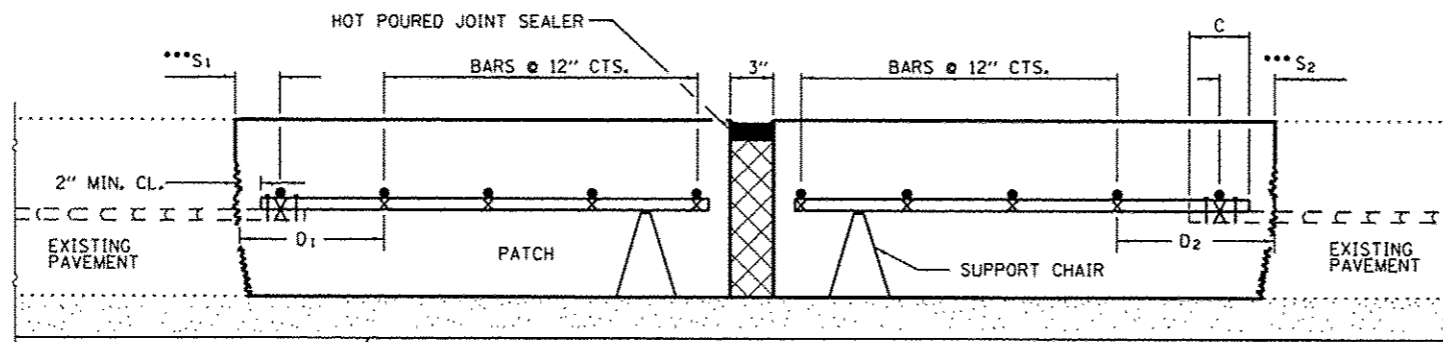


TRANSVERSE REBAR WILL EXTEND TO OUTER LONGITUDINAL REBAR WHILE PROVIDING A MINIMUM 3" CLEARANCE FROM EXISTING PAVEMENT EDGE.

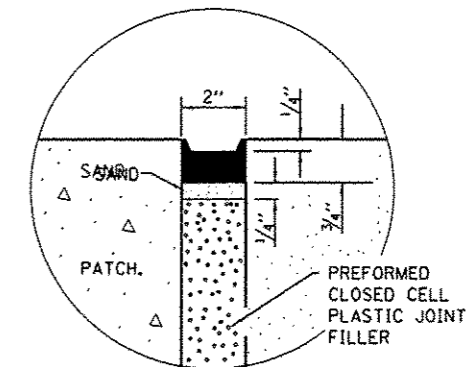
PAVEMENT REINFORCEMENT DETAIL



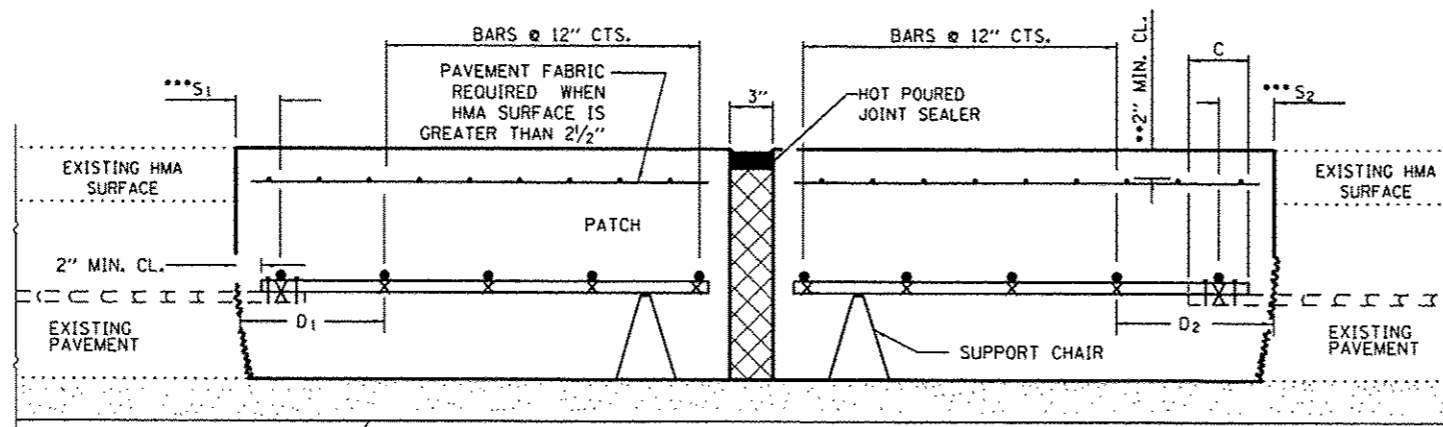
SEALING DETAIL



**PATCHING DETAIL - EXPANSION
WITHOUT HMA SURFACE**



SEALING DETAIL



**PATCHING DETAIL - EXPANSION
WITH HMA SURFACE**

- EVERY 3rd INTERSECTION MUST BE TIED.
- WHEN THE MINIMUM CLEARANCE CANNOT BE OBTAINED WITH THE TRANSVERSE REBAR ON TOP, THEN THE TRANSVERSE REBAR SHALL BE TIED TO THE BOTTOM OF THE LONGITUDINAL REBAR.
- VARIABLES: WHERE S₁ AND S₂ ARE 2 1/2" MIN. AND 12" MAX. D₁ = 2(S₁) AND D₂ = 2(S₂).

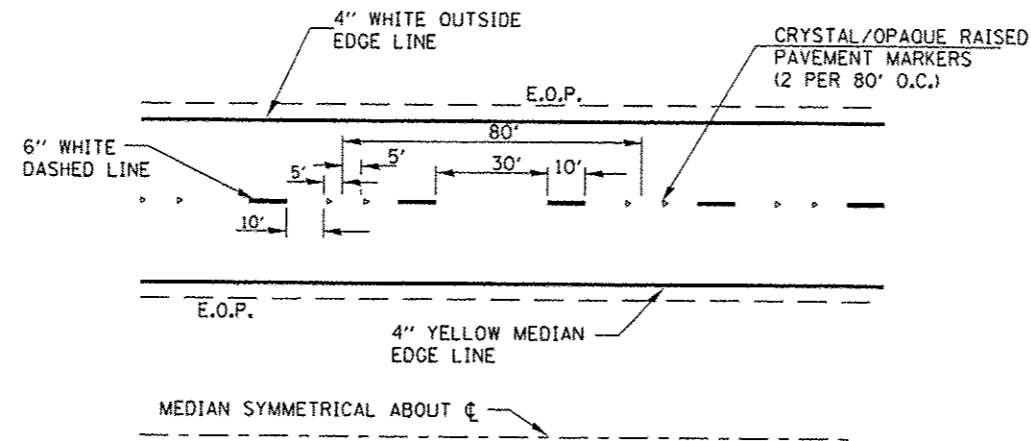
FILE NAME =	USER NAME = patelvj	DESIGNED - RW	REVISED -
ci:\pw\work\p\ridot\patelvj\0337548\036645-sh1-details.dgn		DRAWN - RW	REVISED -
PLOT SCALE = 1/8" = 1' - 0"		CHECKED -	REVISED -
PLOT DATE = 4/3/2013		DATE -	REVISED -

STATE OF ILLINOIS
DEPARTMENT OF TRANSPORTATION

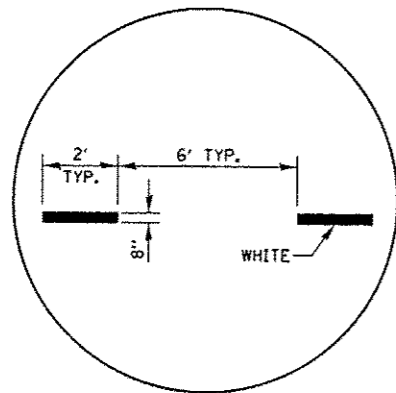
TYPICAL SECTIONS

SCALE: SHEET NO. 1 OF 1 SHEETS STA. TO STA.

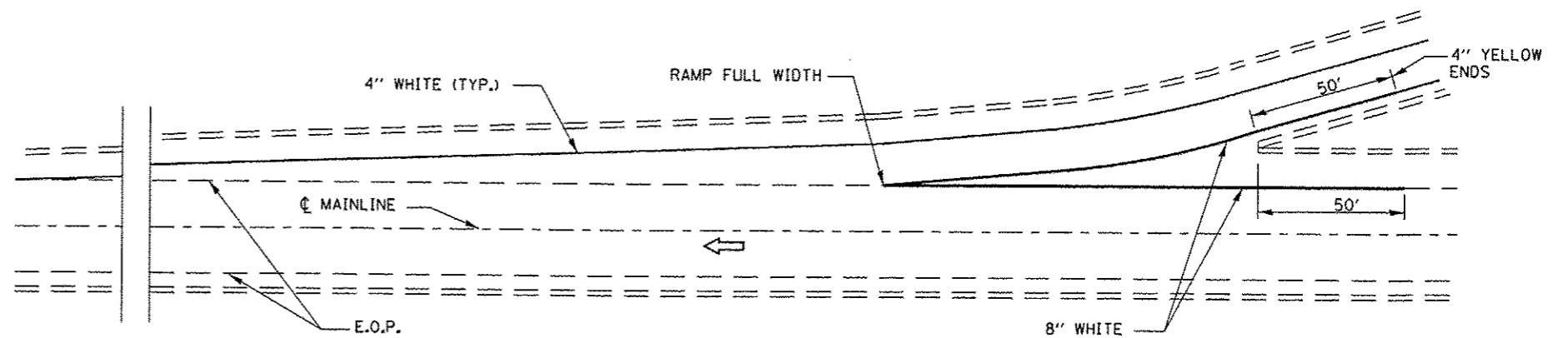
F.A.I. RTE.	SECTION	COUNTY	TOTAL SHEETS	SHEET NO.
55	D3 PATCHING 2014-B	GRUNDY	13	12
CONTRACT NO. 66002				
[ILLINOIS] FED. AID PROJECT				



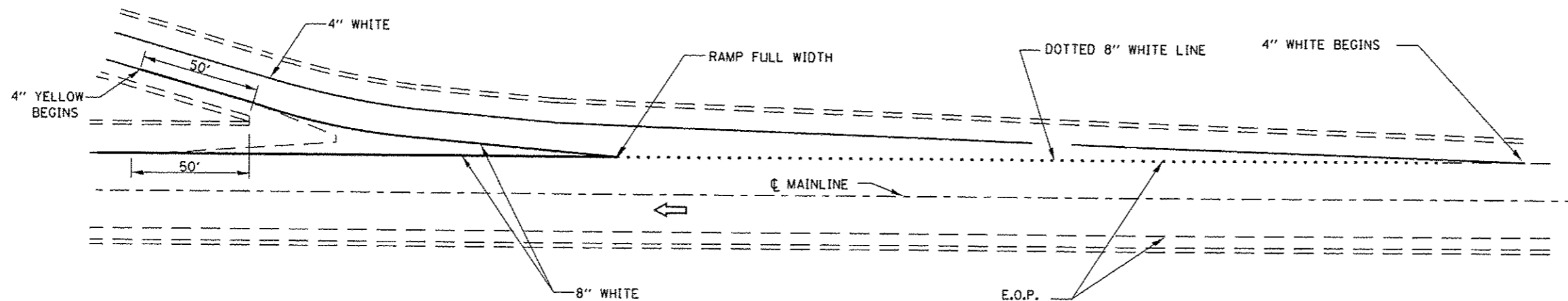
TYPICAL PAVEMENT MARKINGS



INTERSTATE RAMP TRANSITION LINE



TYPICAL PAVEMENT MARKING FOR ENTRANCE RAMP TERMINALS



TYPICAL PAVEMENT MARKINGS FOR EXIT RAMP TERMINALS

FILE NAME =	USER NAME = pataijj	DESIGNED - RW	REVISED -	STATE OF ILLINOIS DEPARTMENT OF TRANSPORTATION	TYPICAL SECTIONS		F.A.I. RTE.	SECTION	COUNTY	TOTAL SHEETS	SHEET NO.
c:\pwwork\pataijj\0337548\036695-sh1-details.dgn	DESIGNED - RW	REVISED -	55				D3 PATCHING 2014-8	GRUNDY	13	13	
PLOT SCALE = 100.0000' / in.	CHECKED -	REVISED -	CONTRACT NO. 66D02								
PLOT DATE = 4/3/2013	DATE -	REVISED -	SCALE:		SHEET NO. 1 OF 1 SHEETS	STA.	TO STA.	ILLINOIS FED. AID PROJECT			