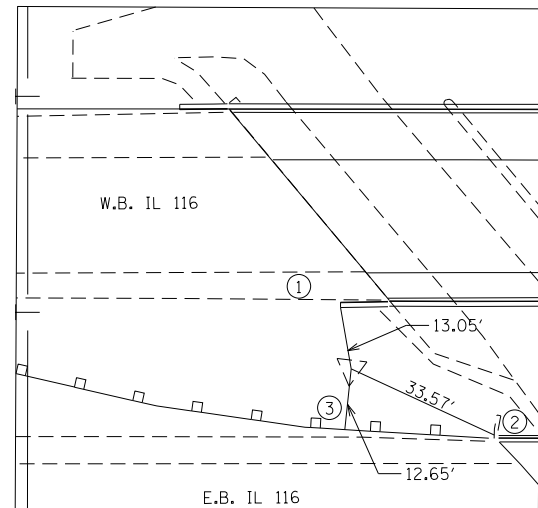


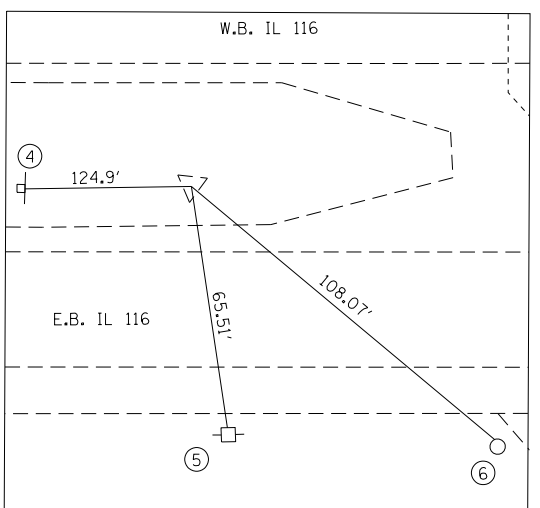
I:\Projects\10-221_IDOT-TazBridges-Ten Mile Creek-Phase II\Drawings\CAD\Sheets\0466671-111-111.dgn



IDOT CONTROL POINT #10

IDOT CONTROL POINT #10 IS A #5 REBAR ON THE CENTER MEDIAN OF THE SOUTH SIDE OF TEN MILE CREEK BRIDGE.
 N = 1483390.755
 E = 2476998.816

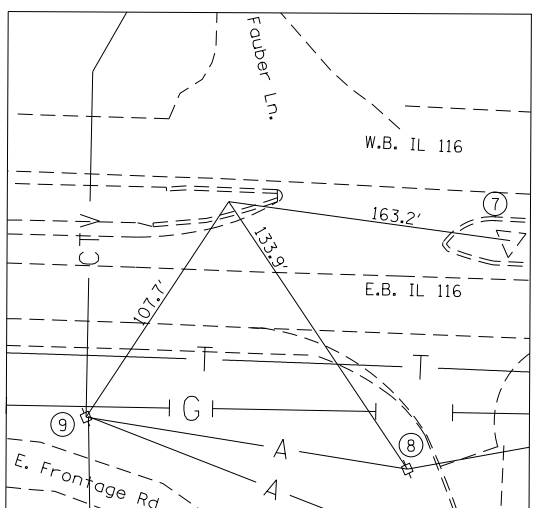
- 1. CORNER OF E. PARAPET WALL
- 2. CORNER OF W. PARAPET WALL
- 3. GUARDRAIL FOR E.B. LANE



IDOT CONTROL POINT #12

IDOT CONTROL POINT #12 IS ON THE S. CENTER MEDIAN NEAR THE FIELD ENTRANCE
 N = 1482515.067
 E = 2476625.835

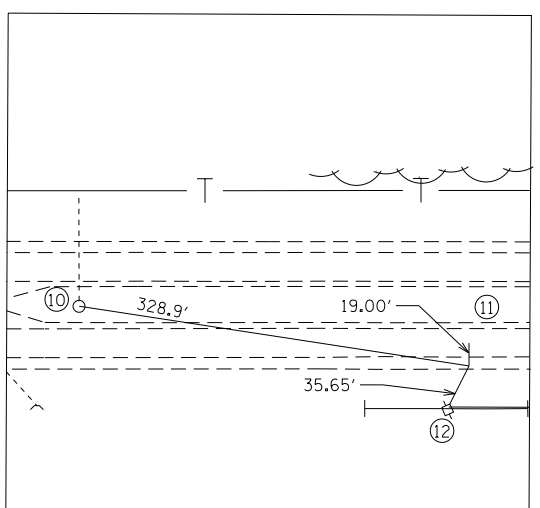
- 4. P.K. IN RONALD RD. SIGN
- 5. P.K. IN POWER POLE
- 6. P.K. IN FENCE POLE ON S. SIDE OF ENTRANCE



CONTROL POINT #1005

CONTROL POINT #1005 IS AN IRON ROD IN THE S. SIDE CENTER AT THE FAUBER LN. INTERSECTION
 N = 1484150.065
 E = 2477330.819

- 7. IDOT CONTROL POINT 11
- 8. POWER POLE AT E. FAUBER LN. ENTRANCE
- 9. POWER POLE NEAR FRONTAGE RD.



CONTROL POINT #1698

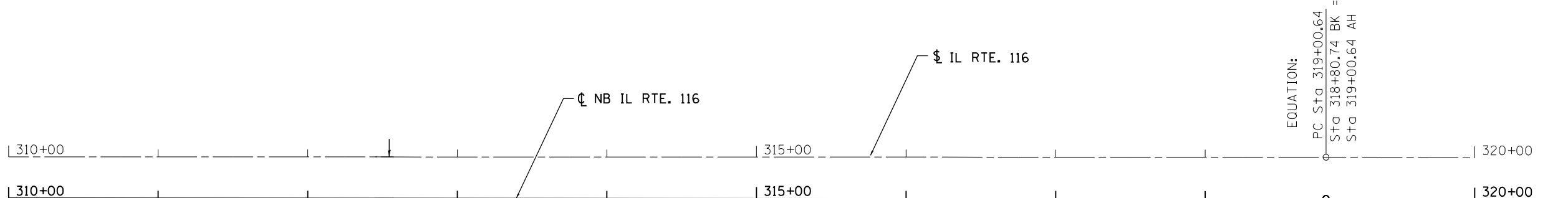
CONTROL POINT #1698 IS A MAG NAIL IN THE E. SHOULDER OF THE EB LANE OF IL. 116.
 N = 1482969.071
 E = 2476871.266

- 10. CATCH BASIN IN CENTER MEDIAN
- 11. POWER POLE ON E. SIDE OF IL. 116
- 12. CENTERLINE OF E.B. LANE OF IL. 116.

IDOT BENCHMARK NUMBER 1
 EXISTING CHISLED "□" ON N.W. CORNER OF CONCRETE WINGWALL. E. SIDE OF S. ABUTMENT, N.B. IL. 116 BRIDGE. ELEV. 489.95

IDOT BENCHMARK NUMBER 2
 CHISLED "□" ON N.W. CORNER OF CONCRETE PARAPET. E. SIDE OF S. ABUTMENT, S.B. IL. 116 BRIDGE ELEV. 492.14

IDOT BENCHMARK NUMBER 3
 CHISLED "□" ON SLOPE WALL TOP, W. SIDE OF S.B. IL. 116 BRIDGE, S. SIDE OF BRIDGE ELEV. 483.21



§ IL RTE. 116

STATION	NORTHING	EASTING
310+00	1,482,782.6983	2,476,735.3611
315+00	1,483,241.2546	2,476,934.6754
320+00	1,483,699.4323	2,477,134.2718
325+00	1,484,153.6153	2,477,343.3180

TEN MILE CREEK ALIGNMENT (ALIGNMENT NOT SHOWN FOR CLARITY)

⊕ NB IL RTE. 116

STATION	NORTHING	EASTING
310+00	1,482,770.1035	2,476,764.3426
315+00	1,483,228.6597	2,476,963.6569
320+00	1,483,668.8509	2,477,155.3006
325+00	1,484,123.2636	2,477,363.8470

STATION	NORTHING	EASTING
85+00	1,483,411.6522	2,476,856.3254
85+23.66	1,483,424.9948	2,476,875.8654
85+77.51	1,483,448.5689	2,476,924.2787
86+00	1,483,452.8825	2,476,946.3525
87+00	1,483,472.0616	2,477,044.4961
88+00	1,483,491.2406	2,477,142.6397
89+00	1,483,510.4196	2,477,240.7833

BRIDGE OMISSION
 STA. 316+93.71 TO
 STA. 318+76.59

EQUATION:
 PC Sta 319+00.64
 STA 318+80.74 BK =
 STA 319+00.64 AH

EXIST. CURVE IL116EXSL
 PI STA. = 328+18.20
 Δ = 6° 04' 28" (RT)
 D = 0° 19' 53"
 R = 17,293.12'
 T = 917.56'
 L = 1,833.40'
 E = 24.33'
 e = ----
 T.R. = ----
 S.E. RUN = ----
 P.C. STA. = 319+00.64
 P.T. STA. = 337+34.04

PROP. CURVE BL116-01
 PI STA. = 328+16.52
 Δ = 6° 04' 28" (RT)
 D = 0° 19' 55"
 R = 17,261.52'
 T = 915.88'
 L = 1,830.05'
 E = 24.28'
 e = ----
 T.R. = ----
 S.E. RUN = ----
 P.C. STA. = 319+00.64
 P.T. STA. = 337+30.69



USER NAME = WAH	DESIGNED - CL	REVISED -
PLOT SCALE = 48.0000' / in.	DRAWN - WAH	REVISED -
PLOT DATE = 12/13/2012	CHECKED - KJC/HTL	REVISED -
	DATE - 10/04/12	REVISED -

**STATE OF ILLINOIS
 DEPARTMENT OF TRANSPORTATION**

**ALIGNMENT, TIE & BENCHMARKS
 IL 116 OVER TEN MILE CREEK**

SCALE: NTS SHEET NO. 1 OF 1 SHEETS STA. TO STA.

F.A.P. RTE. 673	SECTION (102B-1)BR	COUNTY TAZEWELL	TOTAL SHEETS 89	SHEET NO. 19
CONTRACT NO. 68671				

ILLINOIS FED. AID PROJECT