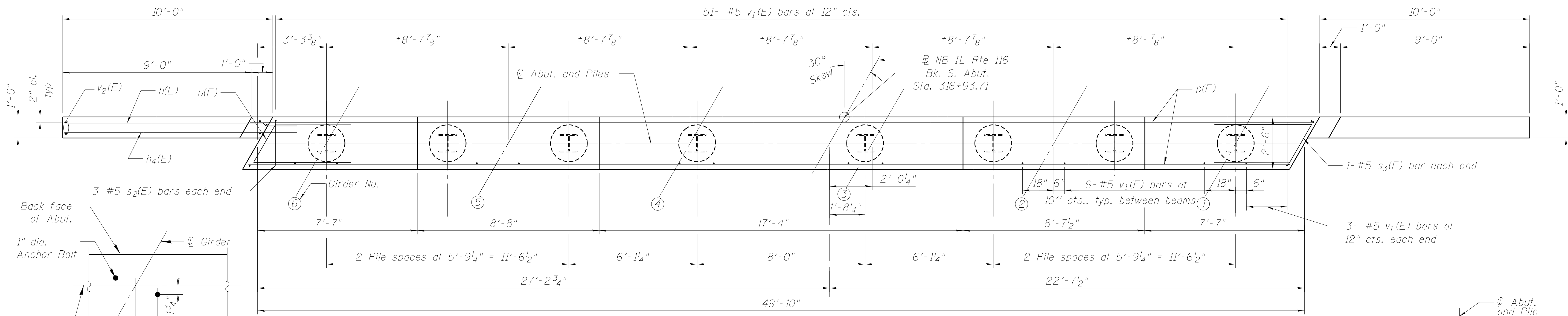
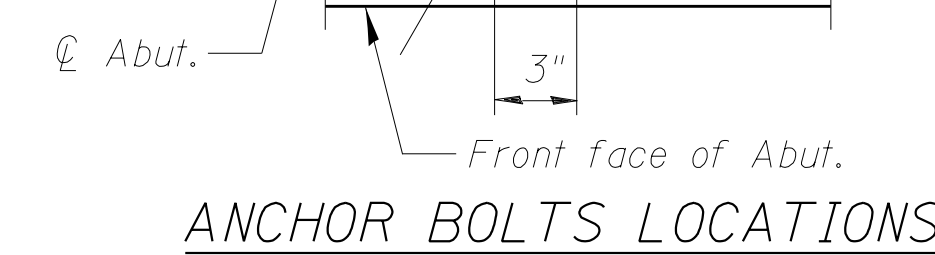


ELEVATION
Looking South



PLAN

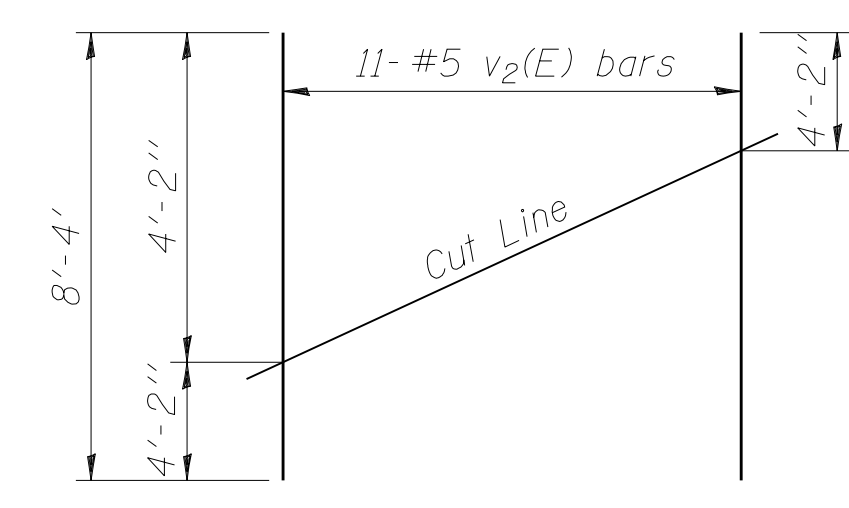


ANCHOR BOLTS LOCATIONS

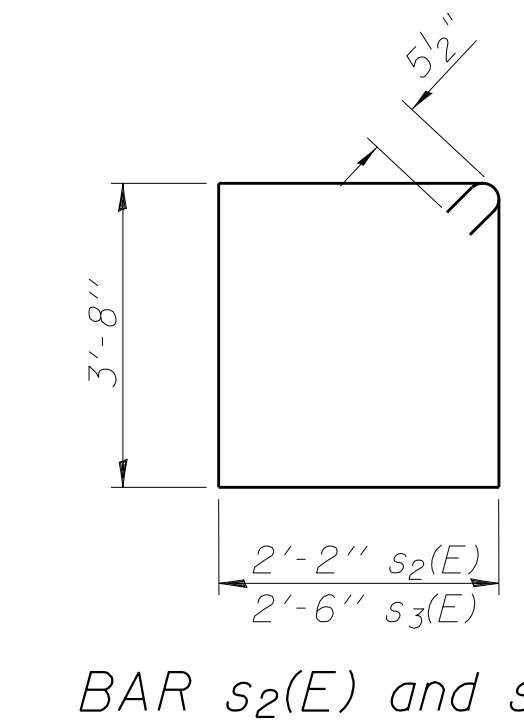
PILE DATA

Type:	Steel HP 14x117
Nominal Required Bearing:	929 Kips
Factored Resistance Available:	465 Kips
Est. Length:	92'
No. Production Piles:	7
No. Test Piles:	1

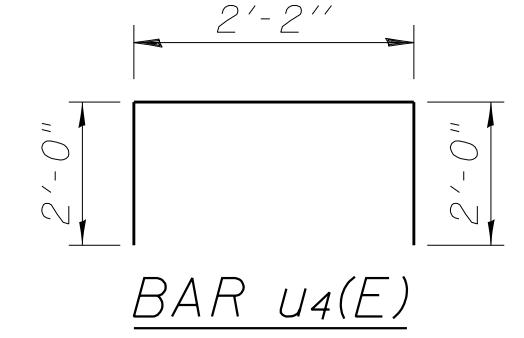
Notes:
Four steps monolithically with cap.
For details of piles and Concrete Encasement, see sheet S20 of S22.



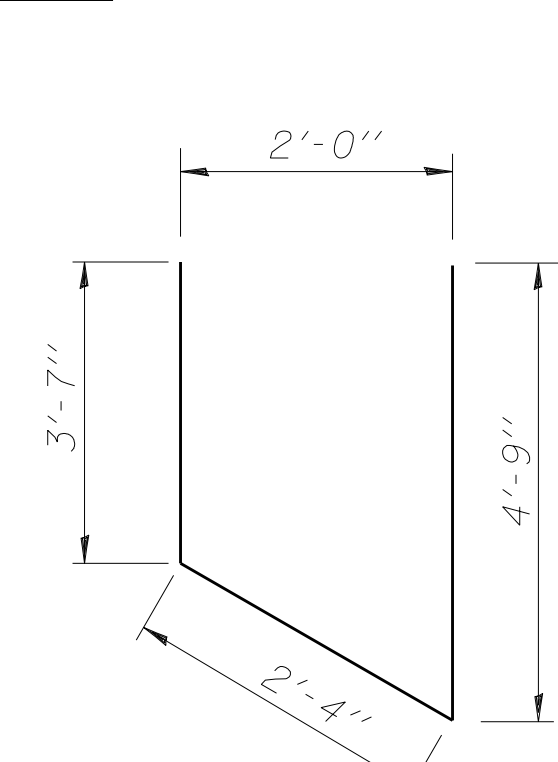
FIELD CUTTING DIAGRAM
Order v2(E) full length. Cut as shown and use remainder of bars in opposite face.



BAR s2(E) and s3(E)



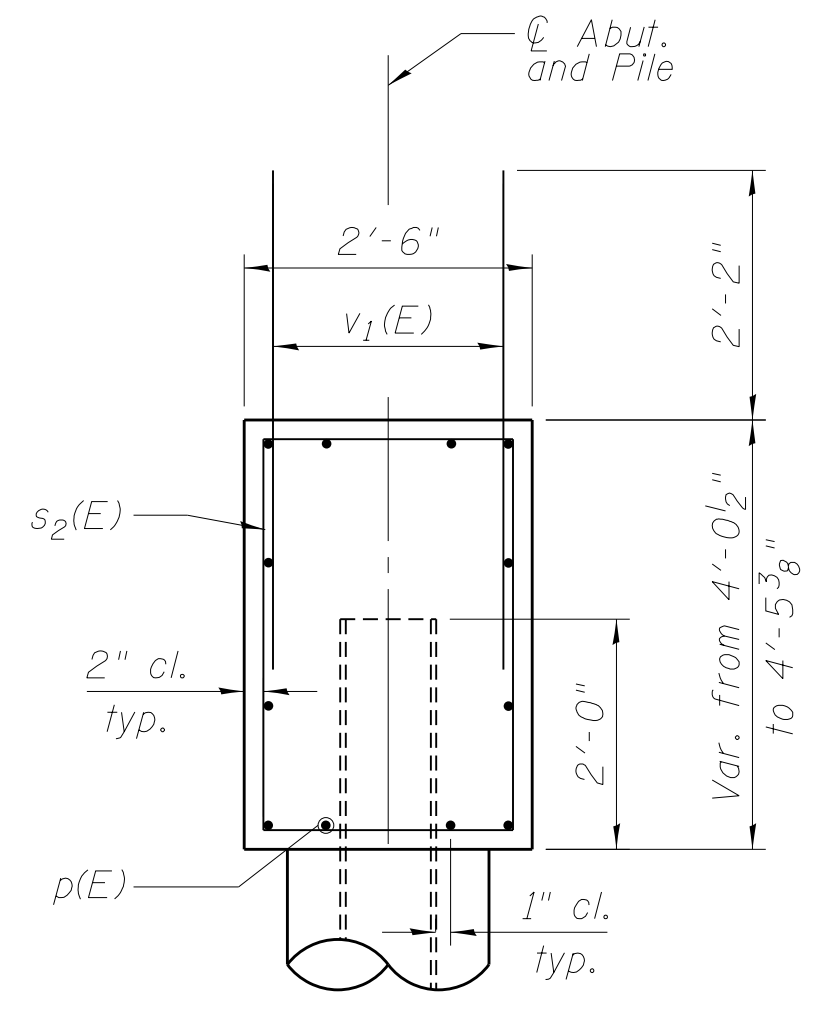
BAR u4(E)



BAR u(E)

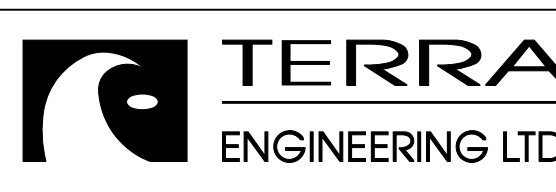
BILL OF MATERIAL

Bar	No.	Size	Length	Shape
h(E)	20	#7	15'-0"	—
h4(E)	30	#5	12'-6"	—
p(E)	12	#7	49'-6"	—
p2(E)	4	#5	17'-0"	—
s2(E)	44	#5	12'-7"	□
s3(E)	2	#5	13'-3"	□
u(E)	8	#6	10'-8"	—
u4(E)	18	#4	6'-2"	—
v1(E)	102	#5	4'-4"	—
v2(E)	22	#5	8'-4"	—
Structure Excavation		Cu. Yd.	174	
Concrete Structures		Cu. Yd.	24.8	
Concrete Encasement		Cu. Yd.	4.4	
Reinforcement Bars, Epoxy Coated		Pound	3750	
Furnishing Steel Piles, HP 14x117		Foot	644	
Driving Piles		Foot	644	
Test Pile Steel HP 14x117		Each	1	



SECTION B-B
SECTION THRU ABUTMENT

M:\JL RT 116 OVER TEN MILE CREEK\CIVIL\AS\Structural\Final Plans\SHEET S106-South-Abutment.dgn



USER NAME = cvm
FILE NAME = D468671-016-South-Abutment.dgn
PLOT DATE = 10/4/2012

DESIGNED - OY
CHECKED - DB
DRAWN - CM
CHECKED - JB

REVISED -
REVISED -
REVISED -
REVISED -

STATE OF ILLINOIS
DEPARTMENT OF TRANSPORTATION

SOUTH ABUTMENT PLAN AND ELEVATION
STRUCTURE NO. 090-0179

SHEET NO. S16 OF S22 SHEETS

F.A.P. RTE.	SECTION	COUNTY	TOTAL SHEETS	SHEET NO.
673	(102B-1) BR	TAZEWELL	89	59

CONTRACT NO. 68671
ILLINOIS FED. AID PROJECT