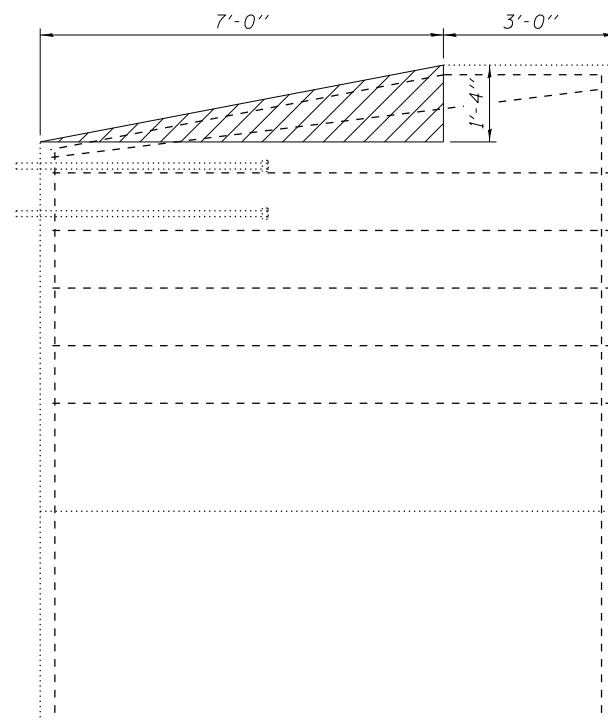
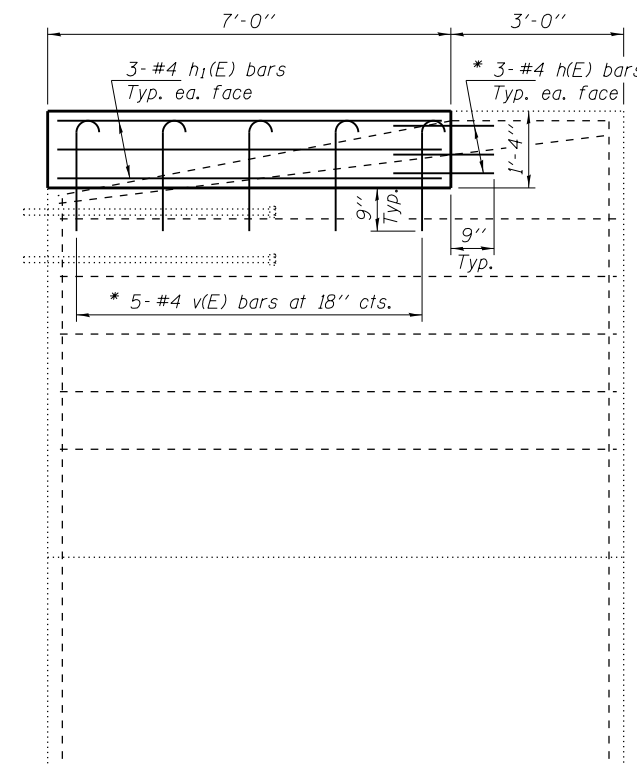


**SECTION**



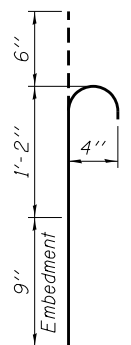
**EXISTING ELEVATION**

Hatched area indicates  
Concrete Removal.



**PROPOSED ELEVATION**

\* Epoxy grout h(E) & v(E) bars in 9" min.  
holes according to Article 584 of the  
Standard Specifications.



**BAR v(E)**

**NOTES**

Reinforcement bars designated (E) shall be epoxy coated.  
Plan dimensions and details relative to existing plans are subject to nominal construction variations. The Contractor shall field verify existing dimensions and details affecting new construction and make necessary approved adjustments prior to construction or ordering of materials. Such variations shall not be cause for additional compensation for a change in scope of the work, however, the Contractor will be paid for the quantity actually furnished at the unit price bid for the work.  
Existing reinforcement bars extending into the removal area shall be cleaned, straightened and incorporated into the new construction. Any reinforcement bars that are damaged during concrete removal shall be replaced with an approved bar splicer or anchorage system. Cost included with Concrete Removal.

**BILL OF MATERIAL**

Bar	No.	Size	Length	Shape
h(E)	24	#4	1'-9"	—
h1(E)	24	#4	6'-8"	—
v(E)	20	#4	2'-5"	└
Concrete Removal			Cu. Yd.	0.8
Concrete Structures			Cu. Yd.	1.6
Reinforcement Bars, Epoxy Coated			Pound	160

DESIGNED -	EXAMINED	DATE -
CHECKED -	ENGINEER OF STRUCTURAL SERVICES	
DRAWN -	PASSED	REVISED
CHECKED -	ENGINEER OF BRIDGES AND STRUCTURES	REVISED

**STATE OF ILLINOIS  
DEPARTMENT OF TRANSPORTATION**

**WINGWALL MODIFICATION  
SN 090-0110**

SHEET NO. OF SHEETS

F.A.P. RTE.	SECTION	COUNTY	TOTAL SHEETS	SHEET NO.
673	(102B-1)BR	TAZEWELL	89	66
CONTRACT NO. 68671				
ILLINOIS FED. AID PROJECT				