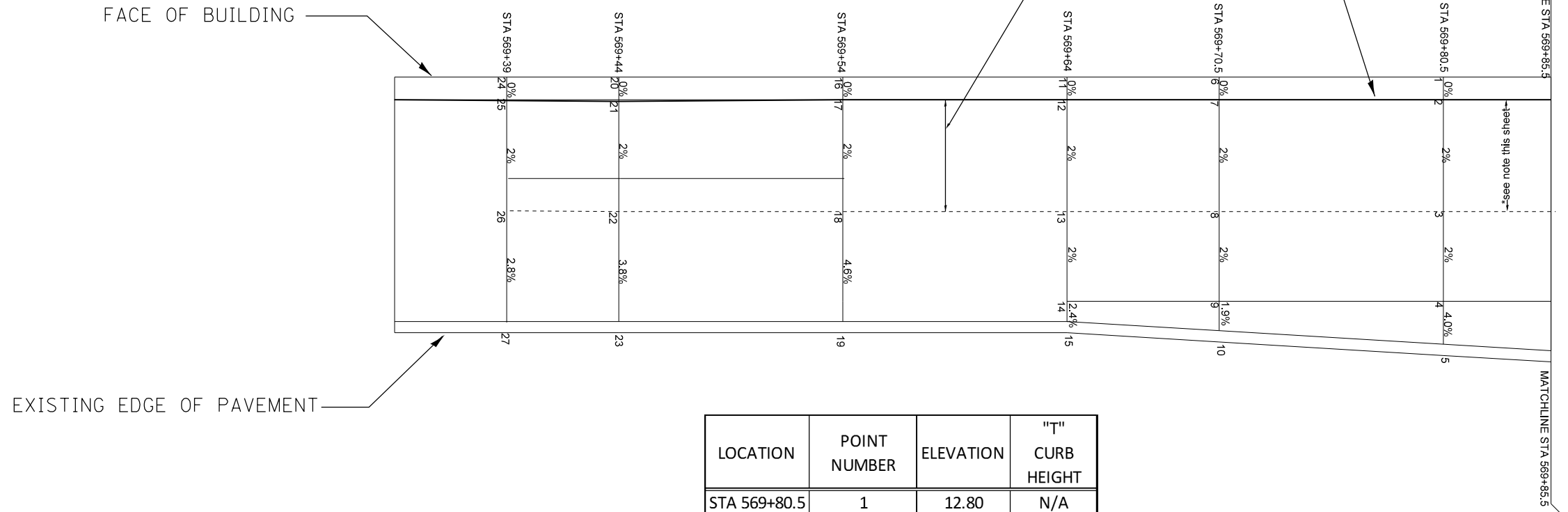


NOTE: PEDESTRIAN ACCESS ROUTE
(5FT MIN. PATH WITH A CROSS-SLOPE OF 2% MAX.)

SEE SCHEDULES FOR REMOVAL AND PROPOSED QUANTITIES

1 FT RELIEF SAWCUT TO BE TO OMITTED
WITH APPROVAL OF RESIDENT.



LOCATION	POINT NUMBER	ELEVATION	"T" CURB HEIGHT
STA 569+80.5	1	12.80	N/A
STA 569+80.5	2	12.80	N/A
STA 569+80.5	3	12.70	N/A
STA 569+80.5	4	12.62	2"
STA 569+80.5	5	11.85	6"
STA 569+70.5	6	12.76	N/A
STA 569+70.5	7	12.76	N/A
STA 569+70.5	8	12.66	N/A
STA 569+70.5	9	12.58	1"
STA 569+70.5	10	11.96	6"
STA 569+64	11	12.74	N/A
STA 569+64	12	12.74	N/A
STA 569+64	13	12.64	N/A
STA 569+64	14	12.56	N/A
STA 569+64	15	12.03	6"
STA 569+54	16	12.79	N/A
STA 569+54	17	12.79	N/A
STA 569+54	18	12.69	N/A
STA 569+54	19	12.05	5"
STA 569+44	20	12.84	N/A
STA 569+44	21	12.84	N/A
STA 569+44	22	12.74	N/A
STA 569+44	23	12.22	4"
STA 569+39	24	12.86	N/A
STA 569+39	25	12.86	N/A
STA 569+39	26	12.76	N/A
STA 569+39	27	12.28	4"

DRAWING NOT TO SCALE

FILE NAME = 68982.dgn	USER NAME = aubreys	DESIGNED -	REVISED -	STATE OF ILLINOIS DEPARTMENT OF TRANSPORTATION	SANTA FE TO TOPEKA SIDEWALK DETAILS	F.A.S. RTE. 2361	SECTION 101 RS-4; 102 RS-5	COUNTY MARSHALL	TOTAL SHEETS 51	SHEET NO. 29		
Default	PLOT SCALE = 40.0000' / in.	CHECKED -	REVISED -			SCALE:	SHEET 29 OF 51 SHEETS	STA. 569+80.5 TO STA. 569+39	CONTRACT NO. 68982			
	PLOT DATE = 3/21/2013	DATE -	REVISED -			ILLINOIS FED. AID PROJECT						