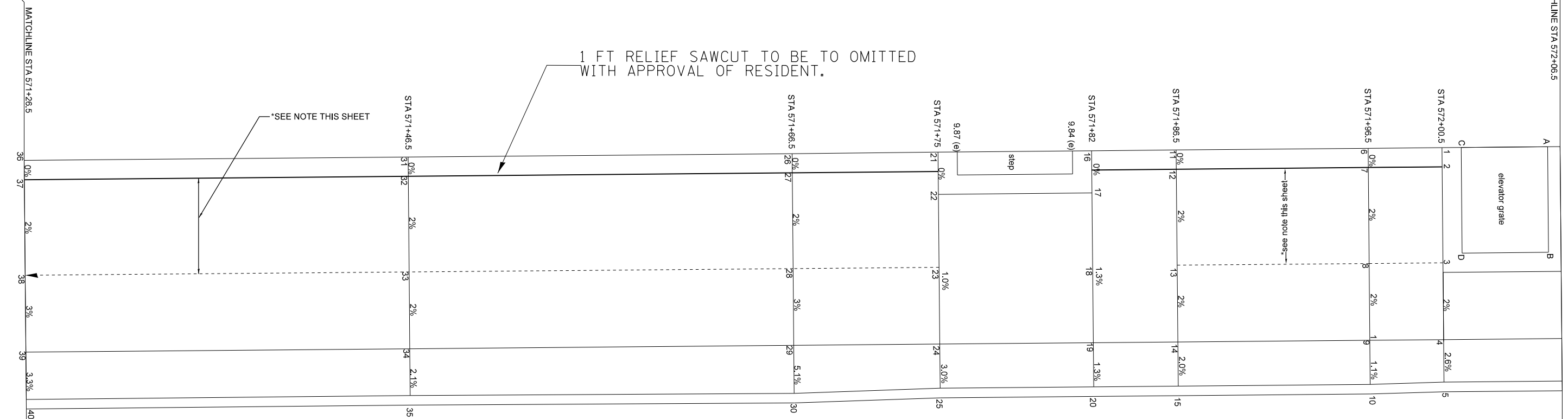


NOTE: PEDESTRIAN ACCESS ROUTE
(5FT MIN. PATH WITH A CROSS-SLOPE OF 2% MAX.)

SEE SCHEDULES FOR REMOVAL AND PROPOSED QUANTITIES



LOCATION	POINT NUMBER	ELEVATION	"T" CURB HEIGHT
STA 572+00.5	1	8.12	N/A
STA 572+00.5	2	8.12	N/A
STA 572+00.5	3	8.01	N/A
STA 572+00.5	4	7.49	2"
STA 572+00.5	5	7.37	4"
STA 571+96.5	6	8.24	N/A
STA 571+96.5	7	8.24	N/A
STA 571+96.5	8	8.14	N/A
STA 571+96.5	9	8.06	2"
STA 571+96.5	10	7.53	4"
STA 571+86.5	11	8.64	N/A
STA 571+86.5	12	8.64	N/A
STA 571+86.5	13	8.54	N/A
STA 571+86.5	14	8.46	3"
STA 571+86.5	15	7.73	5"
STA 571+82	16	8.84	N/A
STA 571+82	17	8.84	N/A
STA 571+82	18	8.74	N/A
STA 571+82	19	8.74	5"
STA 571+82	20	7.86	5"

LOCATION	POINT NUMBER	ELEVATION	CURB HEIGHT "T"
STA 571+75	21	9.30	N/A
STA 571+75	22	9.30	N/A
STA 571+75	23	9.22	N/A
STA 571+75	24	9.22	6"
STA 571+75	25	8.13	6"
STA 571+66.5	26	9.68	N/A
STA 571+66.5	27	9.68	N/A
STA 571+66.5	28	9.58	N/A
STA 571+66.5	29	9.54	6"
STA 571+66.5	30	8.39	6"
STA 571+46.5	31	10.12	N/A
STA 571+46.5	32	10.12	N/A
STA 571+46.5	33	10.02	N/A
STA 571+46.5	34	9.94	5"
STA 571+46.5	35	8.96	6"
STA 571+26.5	36	10.53	N/A
STA 571+26.5	37	10.53	N/A
STA 571+26.5	38	10.43	N/A
STA 571+26.5	39	10.31	6"
STA 571+26.5	40	9.21	6"

DRAWING NOT TO SCALE

FILE NAME = 68982.dgn	USER NAME = aubreys	DESIGNED -	REVISED -
Default	PLOT SCALE = 40.0000' / in.	DRAWN -	REVISED -
	PLOT DATE = 3/21/2013	CHECKED -	REVISED -
		DATE -	REVISED -

STATE OF ILLINOIS
DEPARTMENT OF TRANSPORTATION

SANTA FE TO TOPEKA SIDEWALK DETAILS

SCALE: SHEET 31 OF 51 SHEETS STA. 571+00 TO STA. 571+26

F.A.S. RTE.	SECTION	COUNTY	TOTAL SHEETS	SHEET NO.
2361	101 RS-4; 102 RS-5	MARSHALL	51	31
CONTRACT NO. 68982				
ILLINOIS FED. AID PROJECT				