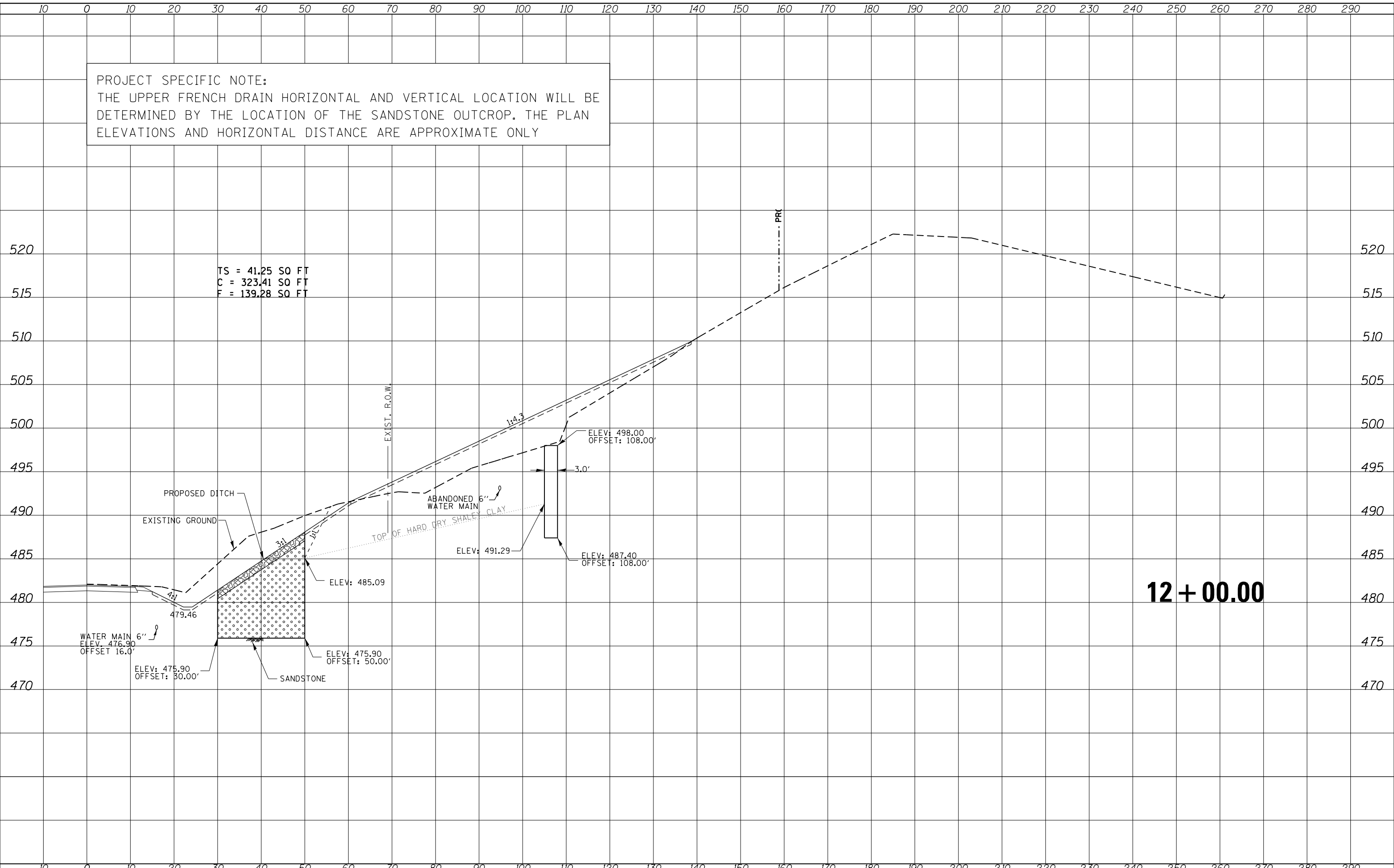


PROJECT SPECIFIC NOTE:
 THE UPPER FRENCH DRAIN HORIZONTAL AND VERTICAL LOCATION WILL BE DETERMINED BY THE LOCATION OF THE SANDSTONE OUTCROP. THE PLAN ELEVATIONS AND HORIZONTAL DISTANCE ARE APPROXIMATE ONLY

DATE	
BY	
SURVEYED	
PLOTTED	
TEMPLATE	
AREAS	
CHECKED	
FINAL SURVEY	
NOTE BOOK	
NO.	

DATE	
BY	
SURVEYED	
PLOTTED	
TEMPLATE	
AREAS	
CHECKED	
ORIGINAL SURVEY	
NOTE BOOK	
NO.	



TS = 41.25 SO FT
 C = 323.41 SO FT
 F = 139.28 SO FT

12 + 00.00

FILE NAME =	USER NAME = aubreys	DESIGNED -	REVISIED -	STATE OF ILLINOIS DEPARTMENT OF TRANSPORTATION	COUNTY HIGHWAY 11 CROSS SECTIONS	F.A.P. RTE.	SECTION	COUNTY	TOTAL SHEETS	SHEET NO.	
US24DuncMillsSlide REVISED SHEET FILE .dgn		DRAWN -	REVISIED -			317	(18)I	FULTON	47	37	
		CHECKED -	REVISIED -			CONTRACT NO. 68A25					
		DATE -	REVISIED -			ILLINOIS FED. AID PROJECT					
		PLOT SCALE = 20.000' / in.		SCALE:	SHEET	OF	SHEETS	STA. 12+00.00	TO STA. 12+00.00		
		PLOT DATE = 3/21/2013									