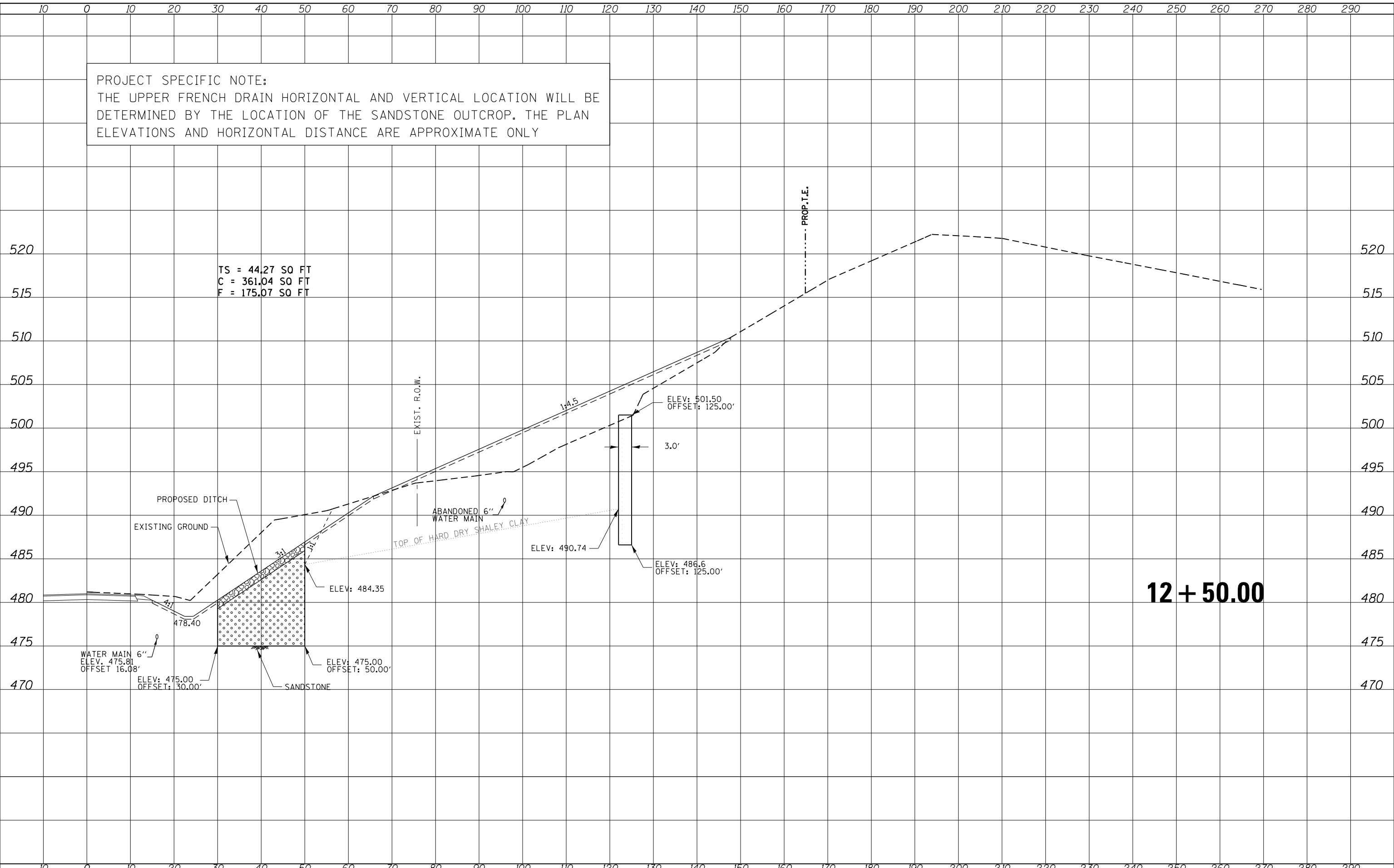


PROJECT SPECIFIC NOTE:
 THE UPPER FRENCH DRAIN HORIZONTAL AND VERTICAL LOCATION WILL BE DETERMINED BY THE LOCATION OF THE SANDSTONE OUTCROP. THE PLAN ELEVATIONS AND HORIZONTAL DISTANCE ARE APPROXIMATE ONLY

| | |
|----------|--|
| DATE | |
| BY | |
| SURVEYED | |
| PLOTTED | |
| TEMPLATE | |
| AREAS | |
| CHECKED | |
| NO. | |

| | |
|----------|--|
| DATE | |
| BY | |
| SURVEYED | |
| PLOTTED | |
| TEMPLATE | |
| AREAS | |
| CHECKED | |
| NO. | |



TS = 44.27 SO FT
 C = 361.04 SO FT
 F = 175.07 SO FT

12 + 50.00

| | | | | | | | | | | | |
|--|---------------------|------------|------------|---|---|--------------------|---------|--------|--------------|---------------|------------------|
| FILE NAME = | USER NAME = aubreys | DESIGNED - | REVISIED - | STATE OF ILLINOIS DEPARTMENT OF TRANSPORTATION | COUNTY HIGHWAY 11 CROSS SECTIONS | F.A.P. RTE. | SECTION | COUNTY | TOTAL SHEETS | SHEET NO. | |
| US24DuncMillsSlide REVISED SHEET FILE .dgn | | DRAWN - | REVISIED - | | | 317 | (18)I | FULTON | 47 | 38 | |
| | | CHECKED - | REVISIED - | | | CONTRACT NO. 68A25 | | | | | |
| | | DATE - | REVISIED - | | | SCALE: | SHEET | OF | SHEETS | STA. 12+50.00 | TO STA. 12+50.00 |