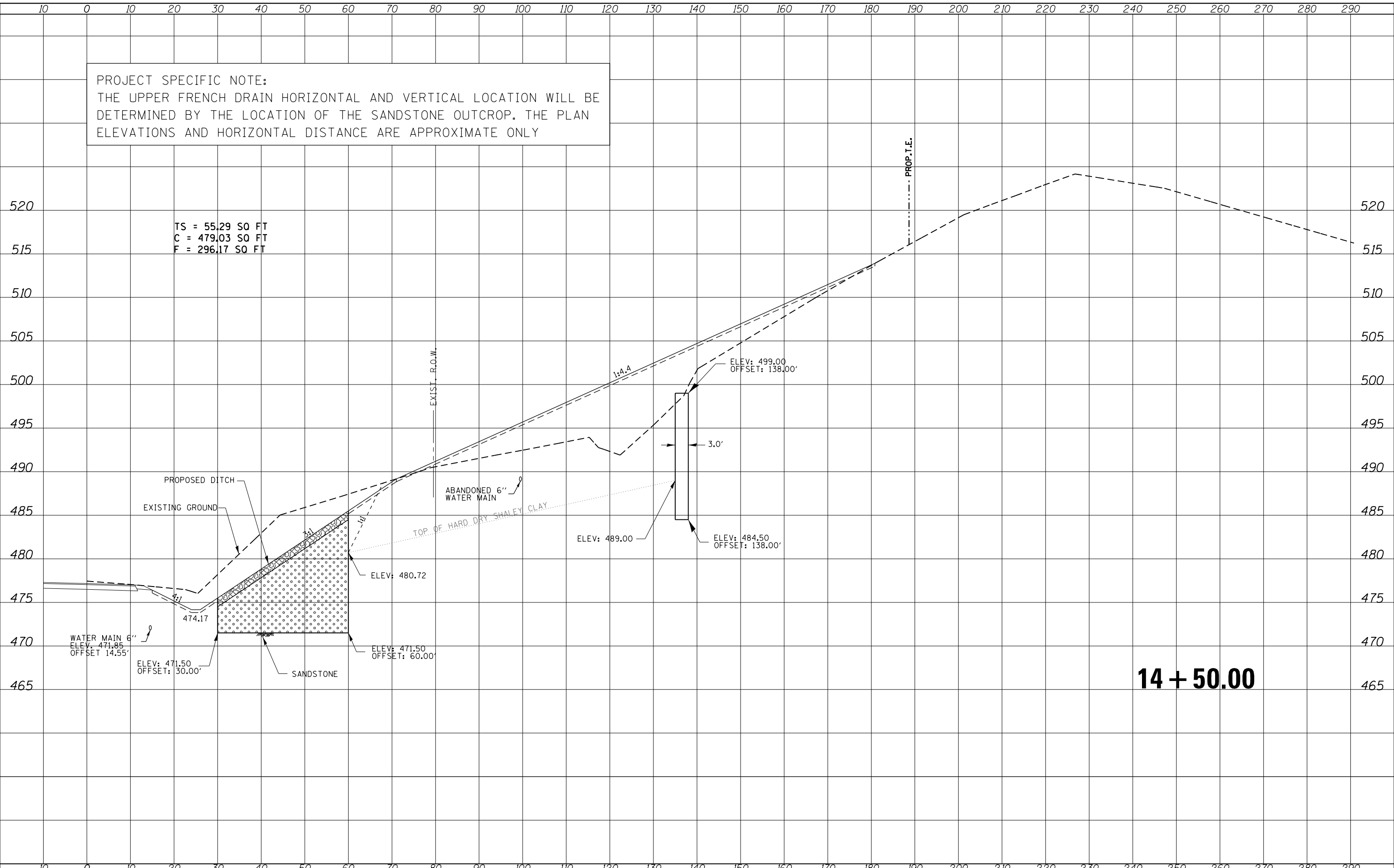


PROJECT SPECIFIC NOTE:
 THE UPPER FRENCH DRAIN HORIZONTAL AND VERTICAL LOCATION WILL BE DETERMINED BY THE LOCATION OF THE SANDSTONE OUTCROP. THE PLAN ELEVATIONS AND HORIZONTAL DISTANCE ARE APPROXIMATE ONLY

DATE	
BY	
FINISHED SURVEY	
PLOTTED	
TEMPLATE	
AREAS	
CHECKED	
NO.	

DATE	
BY	
ORIGINAL SURVEY	
PLOTTED	
TEMPLATE	
AREAS	
CHECKED	
NO.	



FILE NAME = US24DuncMillsSlide REVISED SHEET FILE .dgn	USER NAME = aubreys	DESIGNED -	REVISIED -	STATE OF ILLINOIS DEPARTMENT OF TRANSPORTATION	COUNTY HIGHWAY 11 CROSS SECTIONS	F.A.P. RTE. 317	SECTION (18)I	COUNTY FULTON	TOTAL SHEETS 47	SHEET NO. 42		
	PLOT SCALE = 20.000' / in.	CHECKED -	REVISIED -			SCALE:	SHEET OF SHEETS	STA. 14+50.00	TO STA. 14+50.00	CONTRACT NO. 68A25		
	PLOT DATE = 3/21/2013	DATE -	REVISIED -			ILLINOIS FED. AID PROJECT						