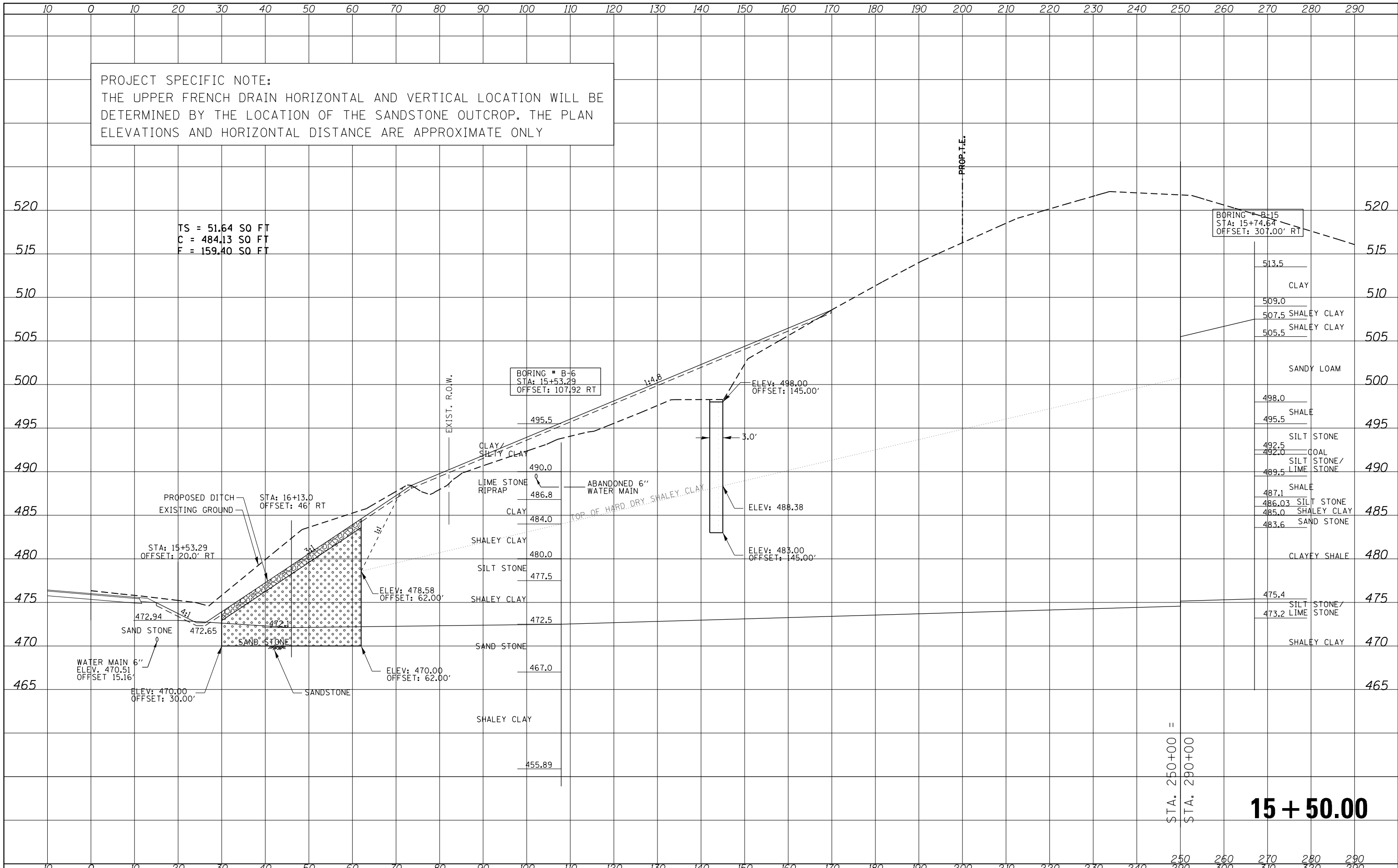


PROJECT SPECIFIC NOTE:
 THE UPPER FRENCH DRAIN HORIZONTAL AND VERTICAL LOCATION WILL BE DETERMINED BY THE LOCATION OF THE SANDSTONE OUTCROP. THE PLAN ELEVATIONS AND HORIZONTAL DISTANCE ARE APPROXIMATE ONLY

DATE	
BY	
SURVEYED	
PLOTTED	
TEMPLATE	
AREAS	
CHECKED	
NO.	

DATE	
BY	
SURVEYED	
PLOTTED	
TEMPLATE	
AREAS	
CHECKED	
NO.	



STA. 250+00 =
 STA. 290+00

15 + 50.00

FILE NAME = US24DuncMillsSlide REVISED SHEET FILE .dgn

USER NAME = aubreys	DESIGNED -	REVISED -
	DRAWN -	REVISED -
PLOT SCALE = 20.000' / in.	CHECKED -	REVISED -
PLOT DATE = 3/21/2013	DATE -	REVISED -

**STATE OF ILLINOIS
 DEPARTMENT OF TRANSPORTATION**

**COUNTY HIGHWAY 11
 CROSS SECTIONS**

SCALE: SHEET OF SHEETS STA. 15+50.00 TO STA. 15+50.00

F.A.P. RTE. 317	SECTION (18)I	COUNTY FULTON	TOTAL SHEETS 47	SHEET NO. 44
CONTRACT NO. 68A25			ILLINOIS FED. AID PROJECT	