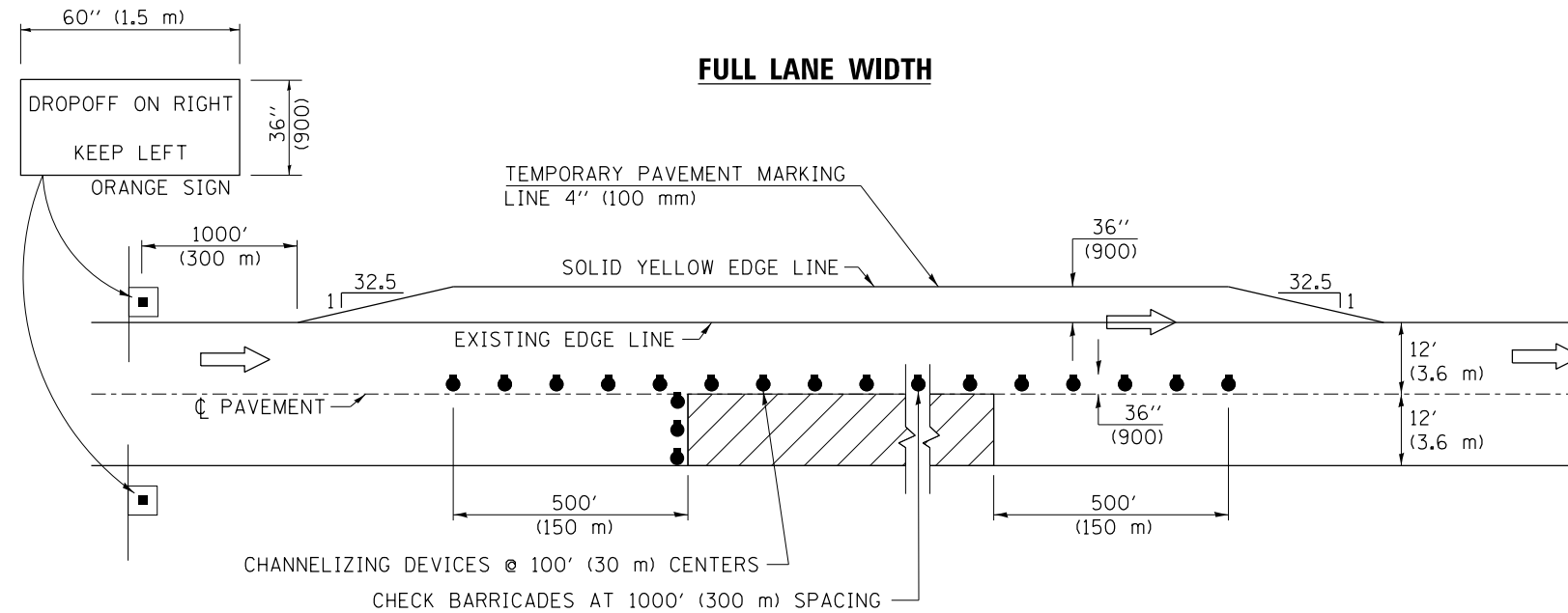


## TYPICAL APPLICATIONS DRIVING LANE WORK



TRAFFIC CONTROL DETAILS NOT SHOWN SHALL BE ACCORDING TO TRAFFIC CONTROL STANDARD 701401.

PASSING LANE CLOSURES SHALL BE SIMILAR. SIGN SHALL READ "DROP OFF ON LEFT, KEEP RIGHT", AND THE TEMPORARY PAVEMENT MARKING LINE 4" (100 mm) SHALL BE A SOLID WHITE LINE.

AT RAMP, THE OVERLAY WORK AREA SHALL BE STAGED TO COORDINATE WITH STANDARD 701411. TEMPORARY RAMPS THROUGH THE OVERLAY AREA TO MAINTAIN RAMP TRAFFIC IN LIEU OF STAGING WILL NOT BE ALLOWED.

SYMBOLS	
	DIRECTION OF TRAVEL
	WORK AREA
	TYPE II BARRICADE, DRUM, OR VERTICAL BARRICADE WITH STEADY BURN MONODIRECTIONAL LIGHT

Note: All dimensions are in INCHES (millimeters) unless otherwise shown.

FILE NAME =	USER NAME = hoganbj	DESIGNED -	REVISED - 11/06	<b>STATE OF ILLINOIS DEPARTMENT OF TRANSPORTATION</b>	<b>TRAFFIC CONTROL AND PROTECTION, STANDARD 701401 (SPECIAL)</b>	F.A.I. RTE. =	SECTION	COUNTY	TOTAL SHEETS	SHEET NO.	
		DRAWN -	REVISED -			39	57(2,3)RS(SB)	McLean	140	49	
	PLOT SCALE = 40.0000' / in.	CHECKED -	REVISED -			CONTRACT NO. 70634					
	PLOT DATE = 3/13/2013	DATE -	REVISED -			SCALE: SHEET NO. 1 OF 1 SHEETS STA. TO STA. FED. ROAD DIST. NO. ILLINOIS FED. AID PROJECT					