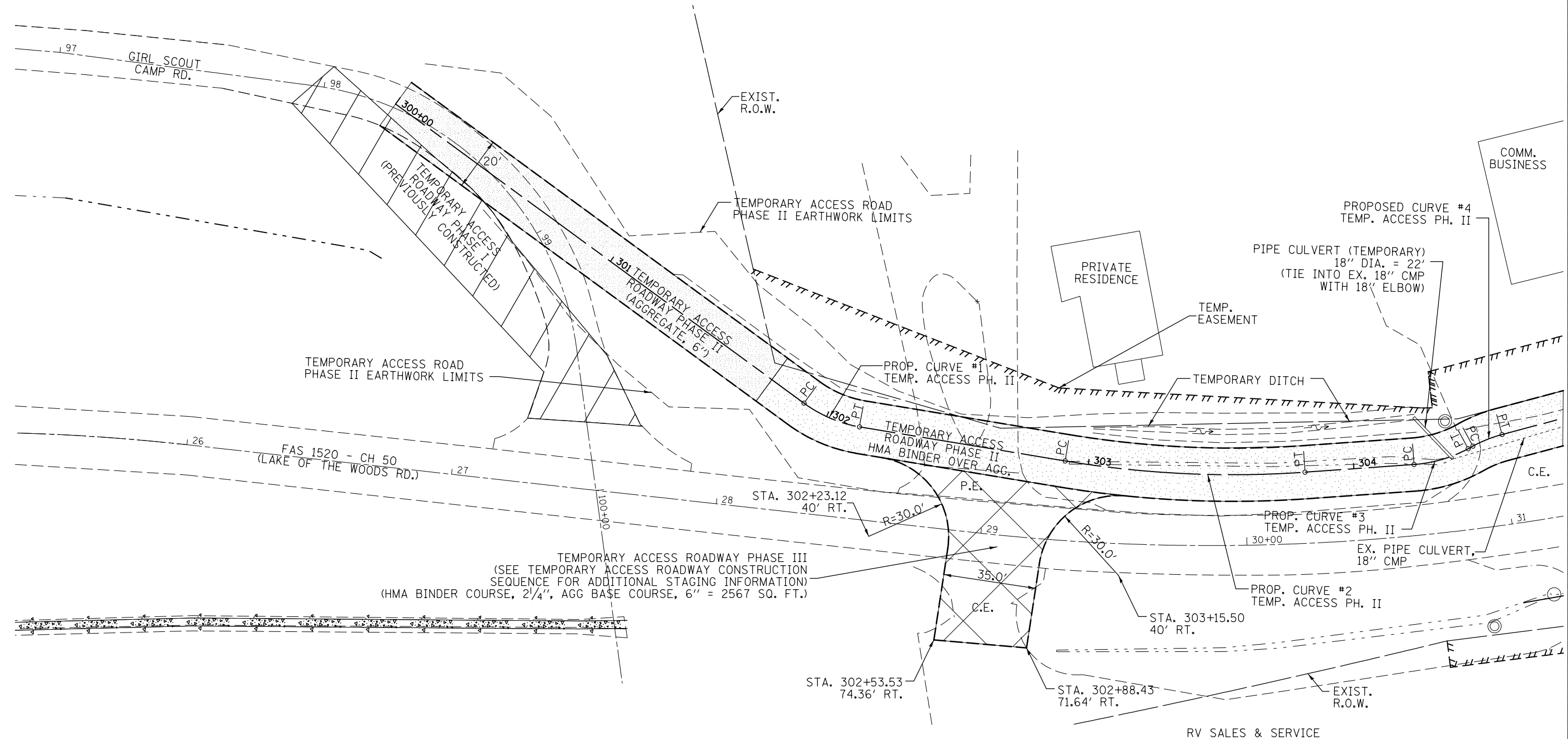


# PHASE II & III



TEMPORARY ACCESS ROADWAY PHASE III  
 (SEE TEMPORARY ACCESS ROADWAY CONSTRUCTION  
 SEQUENCE FOR ADDITIONAL STAGING INFORMATION)  
 (HMA BINDER COURSE, 2 1/4", AGG BASE COURSE, 6" = 2567 SQ. FT.)

**NOTES:**

1. SEE TEMPORARY ACCESS ROADWAY PHASE II CROSS SECTION SHEETS FOR O/S AND ELEVATION INFORMATION.
2. UTILIZE EXISTING PARKING LOT PAVEMENT WITHIN EXISTING R.O.W. FOR TEMPORARY ACCESS ROADWAY FROM STATION 304+48.80 TO STATION 305+69.36.
3. TEMPORARY PIPE CULVERTS SHALL BE REMOVED DURING TEMPORARY ACCESS ROADWAY REMOVAL.
4. TEMPORARY ACCESS ROADWAY PHASE II SHALL CONSIST OF 6" AGGREGATE FOR TEMPORARY ACCESS OVER COMPACTED SUBGRADE FROM STA. 300+00 TO STA. 301+75. BEGINING AT STA. 301+75 TEMPORARY ACCESS ROADWAY PHASE II SHALL BE 2 1/4" HMA BINDER COURSE, IL-19.0, N50 OVER 6" AGGREGATE BASE COURSE TYPE A.
5. TEMPORARY ACCESS ROADWAY PHASE III SHALL ALSO CONSIST OF 2 1/4" HMA BINDER COURSE, IL-19.0 N50 OVER 6" AGGREGATE BASE COURSE TYPE A.



FILE NAME =	USER NAME = ceerlockbm	DESIGNED BMC	REVISED -	<b>STATE OF ILLINOIS DEPARTMENT OF TRANSPORTATION</b>	<b>TEMPORARY ACCESS ROADWAY PHASE I, II, &amp; III DETAILS CH 50 - LAKE OF THE WOODS RD.</b>	F.A.I. RTE.	SECTION	COUNTY	TOTAL SHEETS	SHEET NO.
et:\pwork\pwork\ceerlockbm\d0208368\0570700-sh-t-ACCESS ROAD PLANS.dgn	DRAWN BMC	REVISED -	74			10-4BR	CHAMPAIGN	290	51	
PLOT SCALE = 40.0000' / in.	CHECKED -	REVISED -	CONTRACT NO. 70700							
PLOT DATE = 11/9/2012	DATE 5-3-12	REVISED -	ILLINOIS FED. AID PROJECT							
					SCALE: N/A	SHEET NO. 3 OF 4 SHEETS	STA. 300+00 TO STA. 304+80			