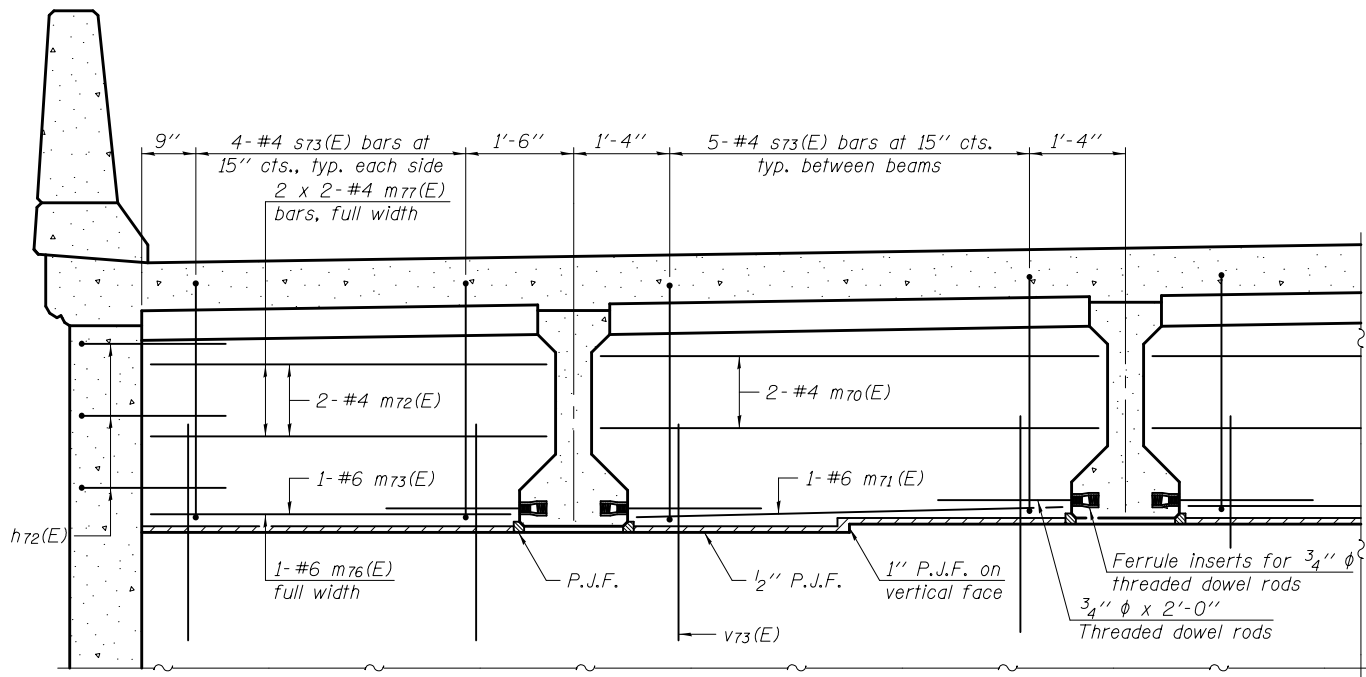


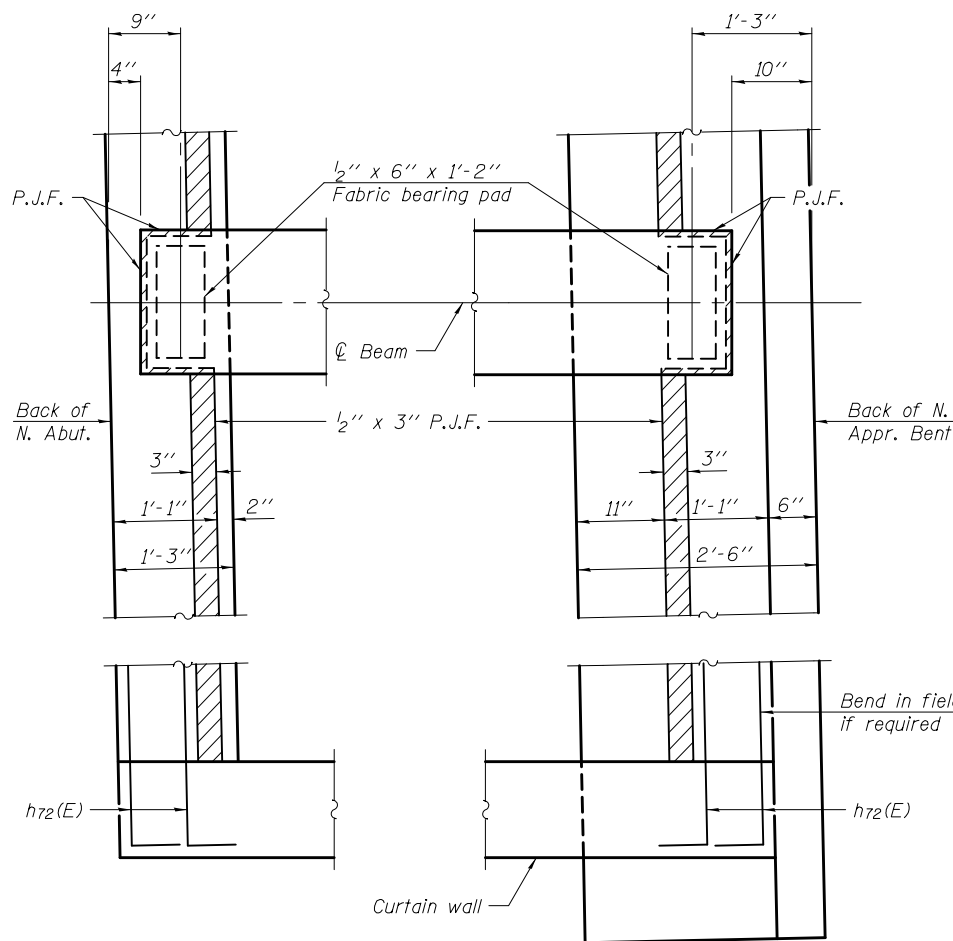
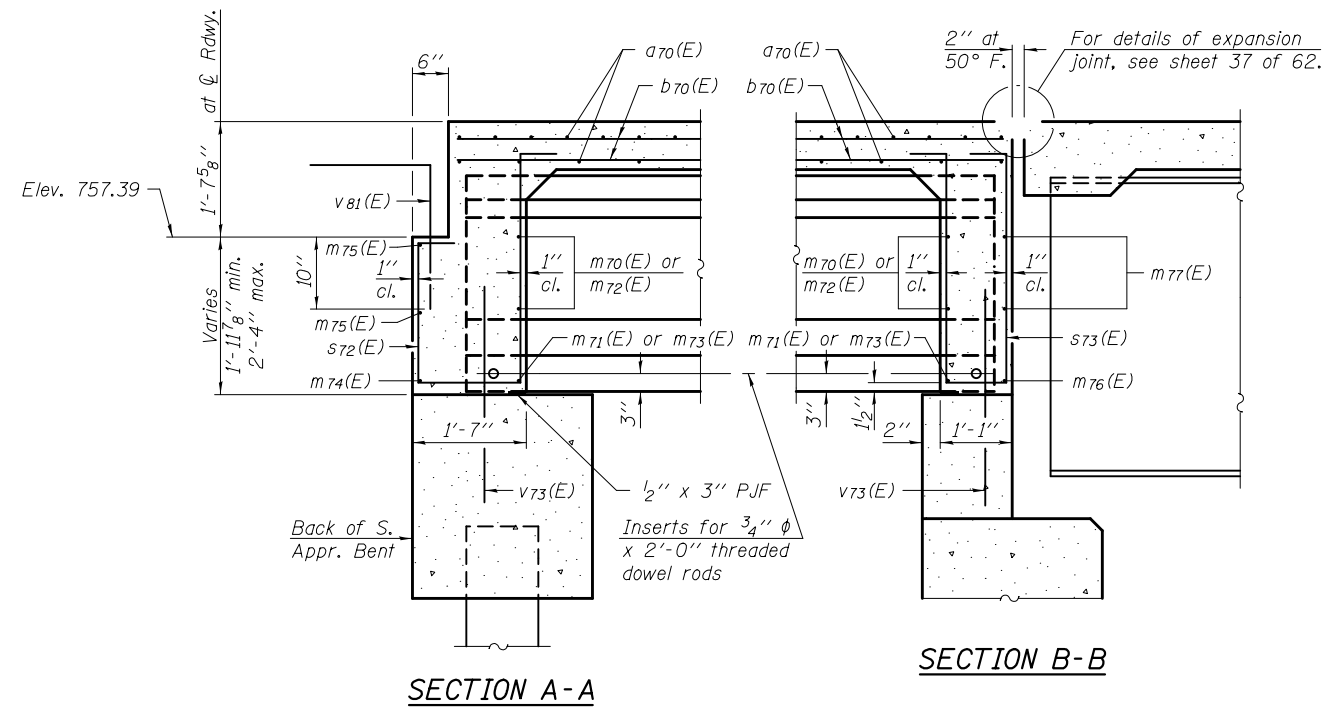
**DIAPHRAGM AT APPROACH BENT**

For location of m70(E) thru m75(E) bars see Section A-A.



**DIAPHRAGM AT ABUTMENT**

For location of m70(E) thru m73(E), m76(E), and m77(E) bars, see Section B-B.



**MINIMUM BAR LAP**

#4 bar = 2'-7"

**NORTH APPROACH SPAN  
BILL OF MATERIAL**

Bar	No.	Size	Length	Shape
a70(E)	139	#5	45'-6"	—
a72(E)	172	#6	6'-6"	—
b70(E)	94	#5	39'-0"	—
d70(E)	40	#4	3'-11"	L
d71(E)	40	#6	3'-8"	L
d72(E)	20	#4	2'-1"	n
d73(E)	44	#5	7'-11"	Δ
d74(E)	44	#5	7'-2"	Δ
d75(E)	44	#5	6'-8"	Δ
d76(E)	44	#5	6'-10"	Δ
e70(E)	60	#4	12'-9"	—
e71(E)	2	#4	39'-0"	—
e72(E)	2	#8	39'-0"	—
m70(E)	16	#4	6'-10"	—
m71(E)	8	#6	5'-10"	—
m72(E)	8	#4	5'-5"	—
m73(E)	4	#6	4'-11"	—
m74(E)	1	#6	45'-11"	—
m75(E)	4	#4	24'-3"	—
m76(E)	1	#6	42'-4"	—
m77(E)	4	#4	22'-6"	—
s72(E)	28	#4	7'-7"	┌┐
s73(E)	28	#4	8'-9"	┌┐
v81(E)	47	#5	3'-9"	┌┐
Reinforcement Bars, Epoxy Coated Concrete Superstructure		Pound	15,480	
		Cu. Yd.	73.3	

Note:  
See sheets 52 thru 56 of 62 for h72(E) and v73(E) bars.  
Bars indicated thus 2 x 2-#4 etc. indicates 2 lines of bars with 2 lengths per line.

DESIGNED - NICHOLAS R. BARNETT	EXAMINED - <i>James F. Schmitt</i>	DATE - FEBRUARY 25, 2013
CHECKED - DEWEY H. COULTAS	PASSED - <i>Carl Perry</i>	
DRAWN - MICHAEL B. MOSSMAN		
CHECKED - D.H.C. / N.R.B.		

STATE OF ILLINOIS  
DEPARTMENT OF TRANSPORTATION

NORTH VAULTED ABUTMENT APPROACH SPAN DETAILS  
STRUCTURE NO. 010 - 0289

F.A.I. RTE.	SECTION	COUNTY	TOTAL SHEETS	SHEET NO.
74	10-4BR	CHAMPAIGN	290	113
			CONTRACT NO.	70700

SHEET NO. 28 OF 62 SHEETS

ILLINOIS FED. AID PROJECT