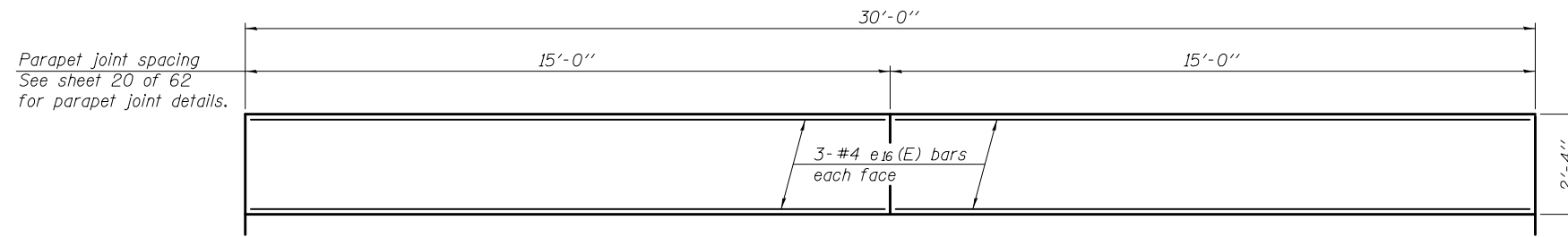
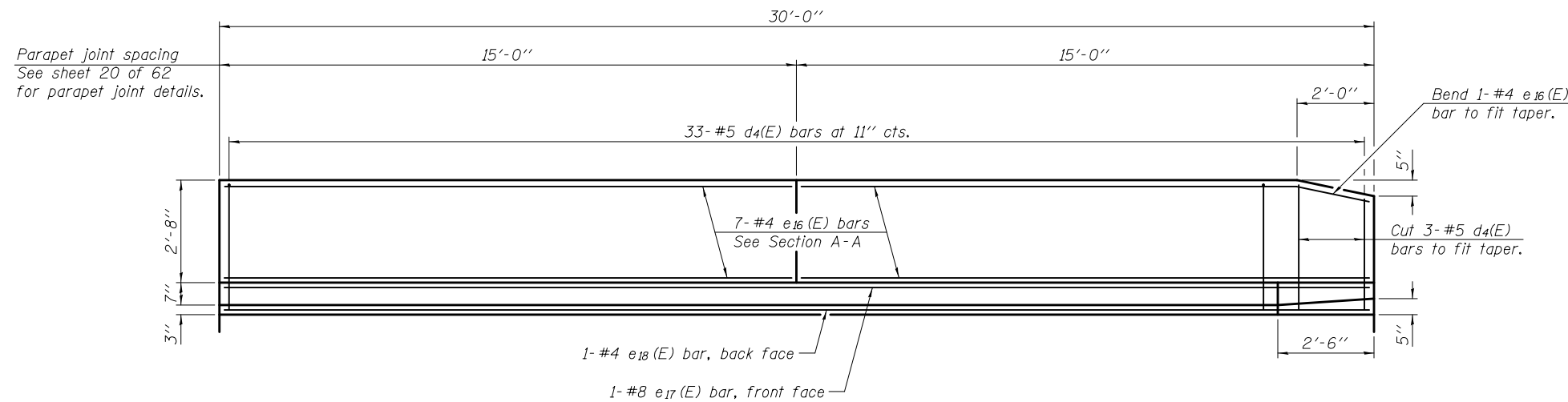


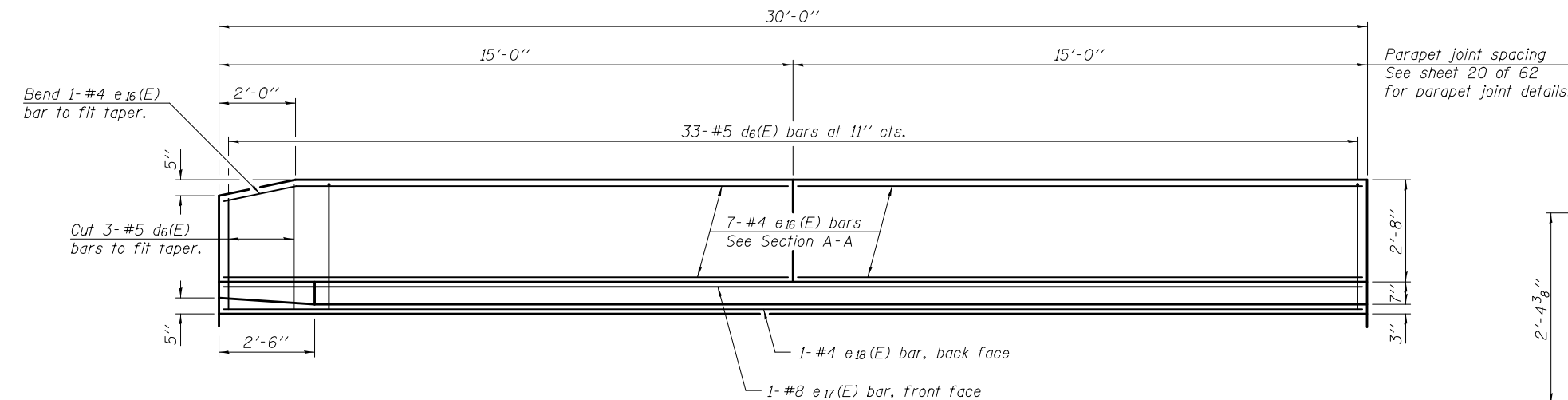
Notes:  
 Approach slab and parapet concrete shall be paid for as Concrete Superstructure.  
 Approach footing concrete shall be paid for as Concrete Structures.  
 Reinforcement shall be paid for as Reinforcement Bars, Epoxy Coated.  
 For  $v_{B1}(E)$  bar details, see sheet 27 of 62.  
 The approach footing maximum applied service bearing pressure ( $Q_{max}$ ) = 2.0 ksf.  
 Cost of excavation for approach footing included with Concrete Structures.  
 See sheet 20 of 62 for  $d_4(E)$  and  $d_6(E)$  bar bending diagrams.  
 For additional parapet details, see sheet 33 of 62.  
 Bars indicated thus 25 x 2-#4 etc. indicates 25 lines of bars with 2 lengths per line.



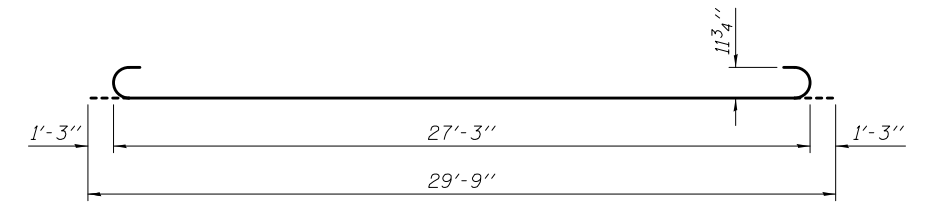
**VIEW C-C**  
 (Inside elevation of west sidewalk parapet wall)



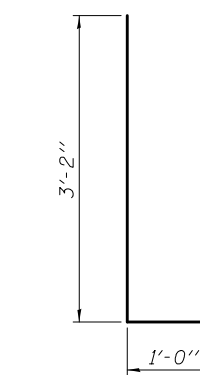
**VIEW D-D**  
 (Inside elevation of west roadway parapet)



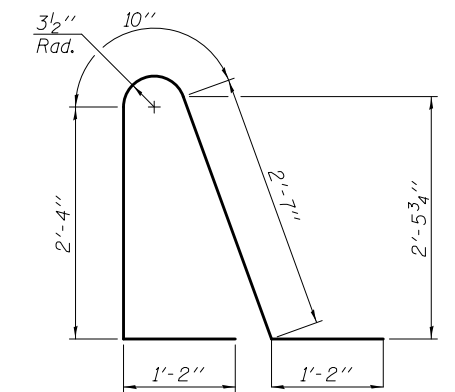
**VIEW E-E**  
 (Inside elevation of east roadway parapet)



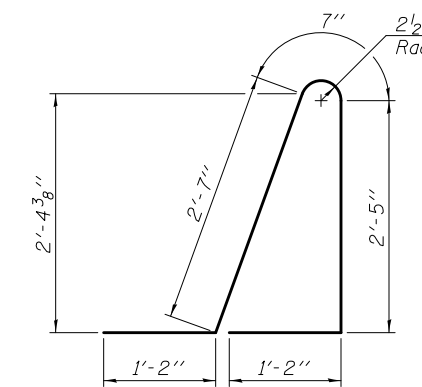
**BAR  $b_3(E)$**



**BARS  $d_7(E)$  &  $d_8(E)$**



**BAR  $d_9(E)$**



**BAR  $d_{10}(E)$**

**NORTH APPROACH SLAB  
 BILL OF MATERIAL**

Bar	No.	Size	Length	Shape
$a_2(E)$	50	#6	6'-6"	—
$a_4(E)$	50	#4	24'-0"	—
$a_5(E)$	46	#5	45'-8"	—
$a_6(E)$	6	#5	1'-6"	—
$b_3(E)$	108	#9	29'-9"	U
$b_4(E)$	39	#4	29'-8"	—
$d_4(E)$	33	#5	7'-2"	∧
$d_6(E)$	33	#5	6'-10"	∧
$d_7(E)$	30	#4	4'-2"	∧
$d_8(E)$	30	#6	4'-2"	∧
$d_9(E)$	33	#5	8'-1"	∧
$d_{10}(E)$	33	#5	7'-11"	∧
$e_{16}(E)$	40	#4	14'-8"	—
$e_{17}(E)$	2	#8	29'-8"	—
$e_{18}(E)$	2	#4	29'-8"	—
$t(E)$	94	#4	9'-8"	—
$w(E)$	40	#5	45'-8"	—
Concrete Superstructure		Cu. Yd.	79.3	
Concrete Structures		Cu. Yd.	14.2	
Reinforcement Bars, Epoxy Coated		Pound	19,600	

(Sheet 3 of 3)

DESIGNED - DEWEY H. COULTAS	EXAMINED - <i>James F. J...</i>	DATE - FEBRUARY 25, 2013
CHECKED - NICHOLAS R. BARNETT	PASSED - <i>Carl...</i>	REVISED
DRAWN - MICHAEL B. MOSSMAN	ACTING ENGINEER OF BRIDGES AND STRUCTURES	REVISED
CHECKED - D.H.C. / N.R.B.		

**STATE OF ILLINOIS  
 DEPARTMENT OF TRANSPORTATION**

**NORTH BRIDGE APPROACH SLAB DETAILS  
 STRUCTURE NO. 010 - 0289**

SHEET NO. 34 OF 62 SHEETS

F.A.I. RTE.	SECTION	COUNTY	TOTAL SHEETS	SHEET NO.
74	10-4BR	CHAMPAIGN	290	119
ILLINOIS FED. AID PROJECT			CONTRACT NO. 70700	