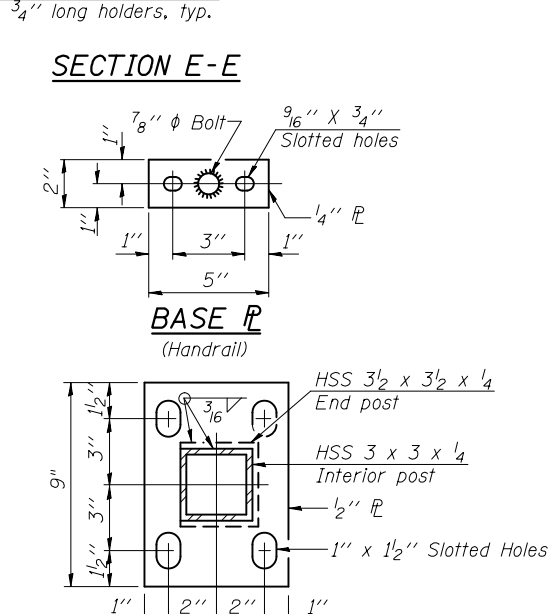
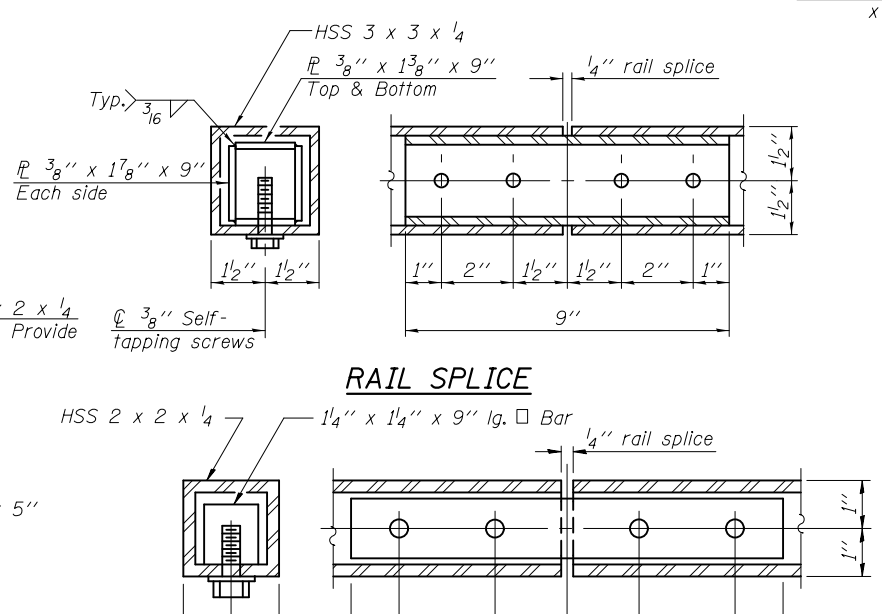
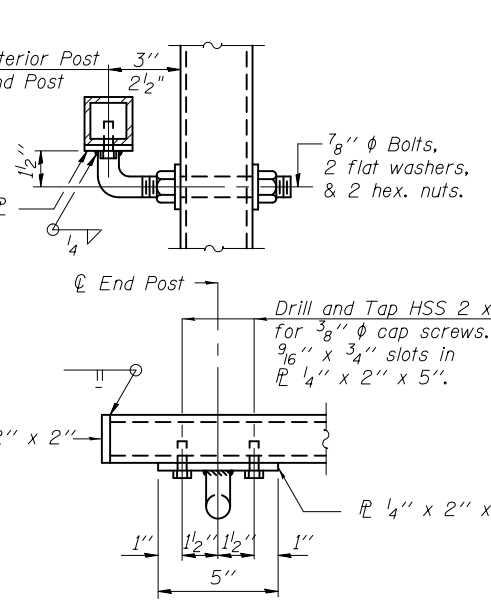
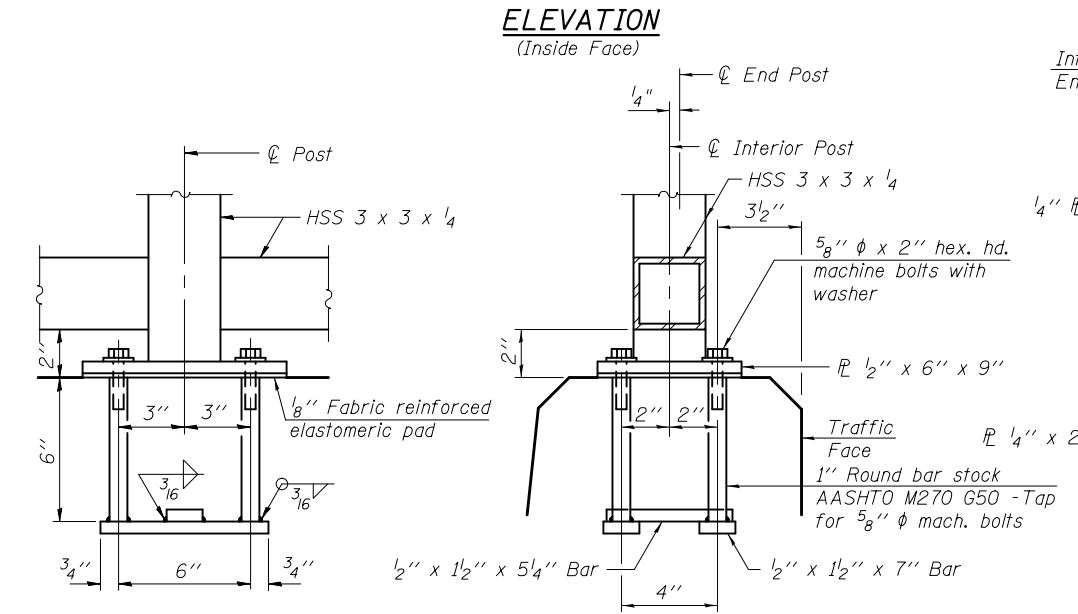


Notes:

All steel rail elements shall be galvanized according to Article 509.05 of the Standard Specifications. All of these elements, except the chain link fabric and ties, shall also be powder coated. At a minimum, the powder coating process shall consist of a zinc phosphate pretreatment/wash, a gray zinc rich primer coat, and a black top coat.

The galvanized chain link fabric and ties shall be vinyl coated black according to Section 509 and Article 1006.27(a)(1)d of the Standard Specifications.



In lieu of the cast-in-place anchor device shown, the Contractor has the option of drilling and setting 5/8" φ anchor rods according to Article 509.06 of the Standard Specifications. Embedment shall be according to the manufacturer's specifications.

BILL OF MATERIAL

Item	Unit	Quantity
Bridge Fence Railing	Foot	335

R-32

7-1-10

*Variable - See Plans (10'-0" Maximum Post Spacing)

DESIGNED - DEWEY H. COULTAS	EXAMINED
CHECKED - NICHOLAS R. BARNETT	PASSED
DRAWN - MICHAEL B. MOSSMAN	
CHECKED - D.H.C. / N.R.B.	

ACTING ENGINEER OF BRIDGE DESIGN

ACTING ENGINEER OF BRIDGES AND STRUCTURES

DATE - FEBRUARY 25, 2013	REVISIONS

STATE OF ILLINOIS
DEPARTMENT OF TRANSPORTATION

BRIDGE FENCE RAILING, PARAPET MOUNTED
STRUCTURE NO. 010 - 0289

SHEET NO. 35 OF 62 SHEETS

F.A.I. RTE. 74	SECTION 10-4BR	COUNTY CHAMPAIGN	TOTAL SHEETS 290	SHEET NO. 120
			CONTRACT NO. 70700	
ILLINOIS FED. AID PROJECT				