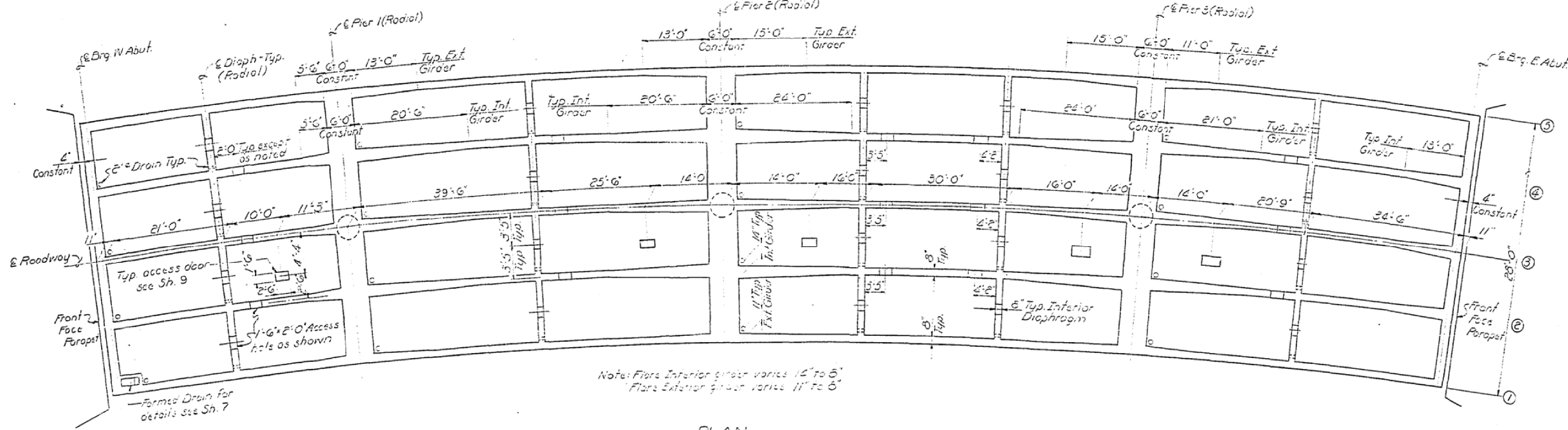
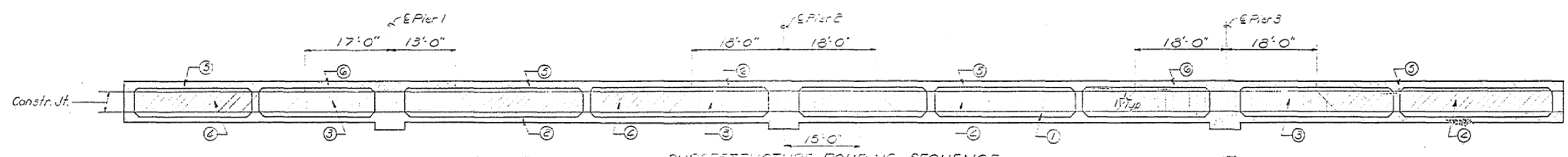


STATE OF ILLINOIS  
DEPARTMENT OF PUBLIC WORKS & BUILDINGS  
DIVISION OF HIGHWAYS

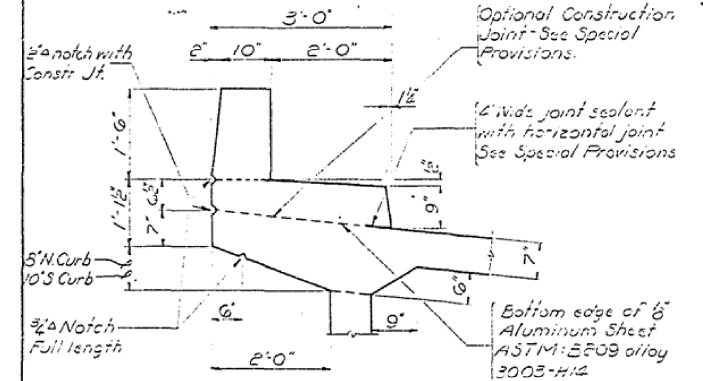
ROUTE NO.	SECTION	COUNTY	TOTAL SHEETS	SHEET NO.
10-4	10-4	Champaign	34	8
F.L. 74	HB-2			
FED. ROAD DIST. NO. 7	ILLINOIS	FED. AID PROJECT		



PLAN



SUPERSTRUCTURE POURING SEQUENCE

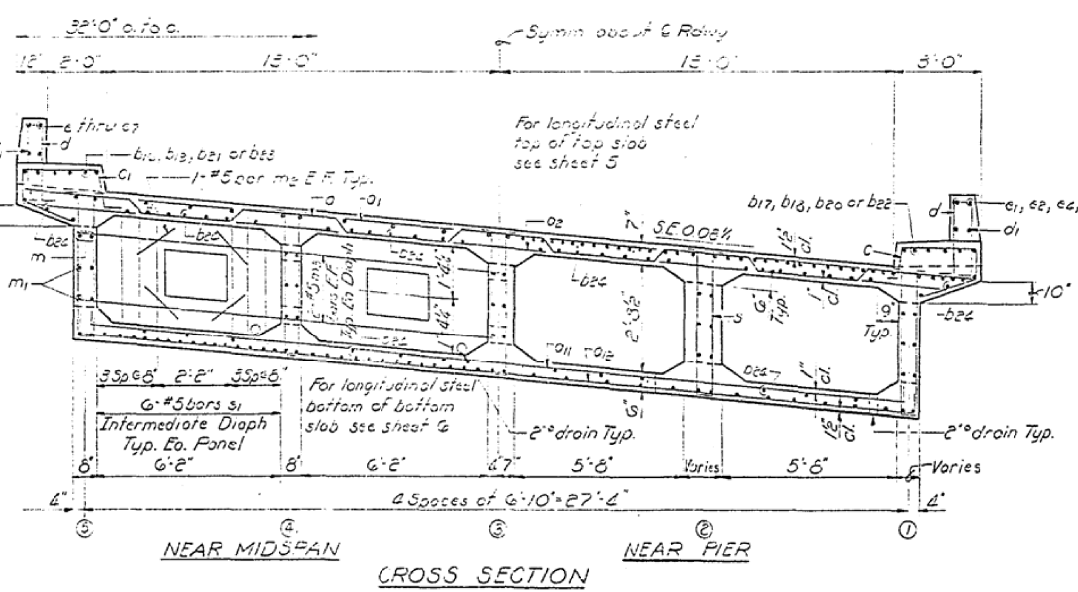


CURB DETAIL  
Cost of Aluminum sheet incidental to C.I. X Conc.

DESIGNED	James M. Pomeroy	EXAMINED	July 29 1965
CHECKED	James S. Hartman	PASSED	
DRAWN	J. C. DuBois	APPROVED	
CHECKED	J. W. JNP		

SYMBOLS

- Pour 1
- Pour 2
- Pour 3
- Pour 4
- Pour 5
- Pour 6



CROSS SECTION

Pours 5 & 6 may be placed together  
After each of pours 1, 2, 3, & 4 have been completed, the forms must be checked and wedged up or raised to the proper elevations before proceeding with the next pour.  
The entire falsework must be erected of one time before any concrete poured.  
The contractor shall submit falsework plans for the approval of the Engineer.  
No longitudinal construction joints will be permitted.  
All construction joints to be banded construction joints, to secure the best possible bond between the pours.  
For Bill of Material, see sheet 8

F.A.I.R.T. 74 SEC. 10-4HB-2  
CHAMPAIGN COUNTY  
STA. 1547+92.48