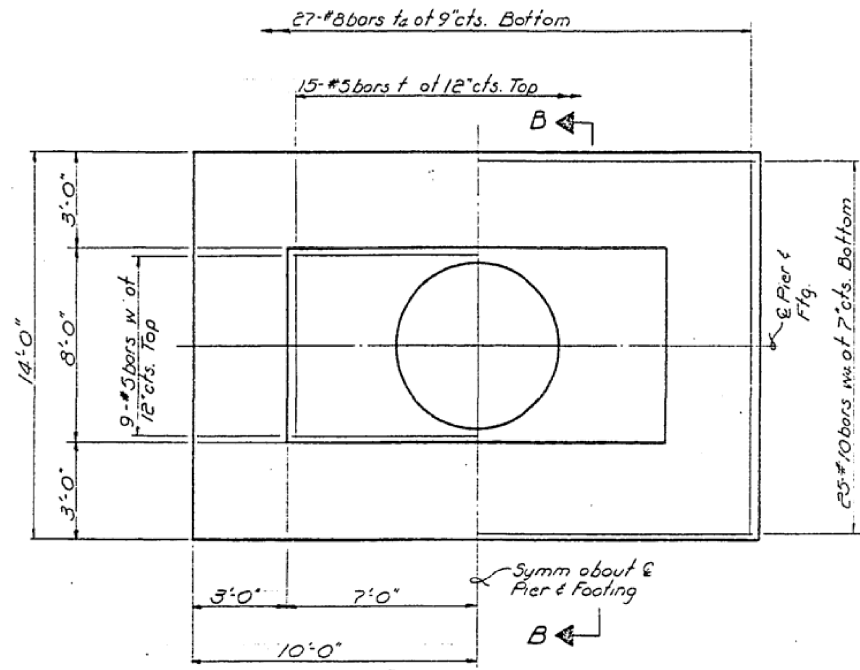
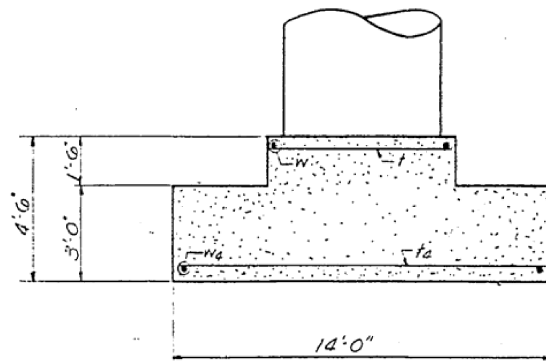


STATE OF ILLINOIS  
DEPARTMENT OF PUBLIC WORKS & BUILDINGS  
DIVISION OF HIGHWAYS

PROJECT NO.	SECTION	COUNTY	TOTAL SHEETS	SHEET NO.	SHEET NO. 16 18 SHEETS
F.A.I. 74	10-4 HB-2	CHAMPAIGN	34	22	
FED. ROAD DIST. NO. 7	ILLINOIS	FED. AID PROJECT			



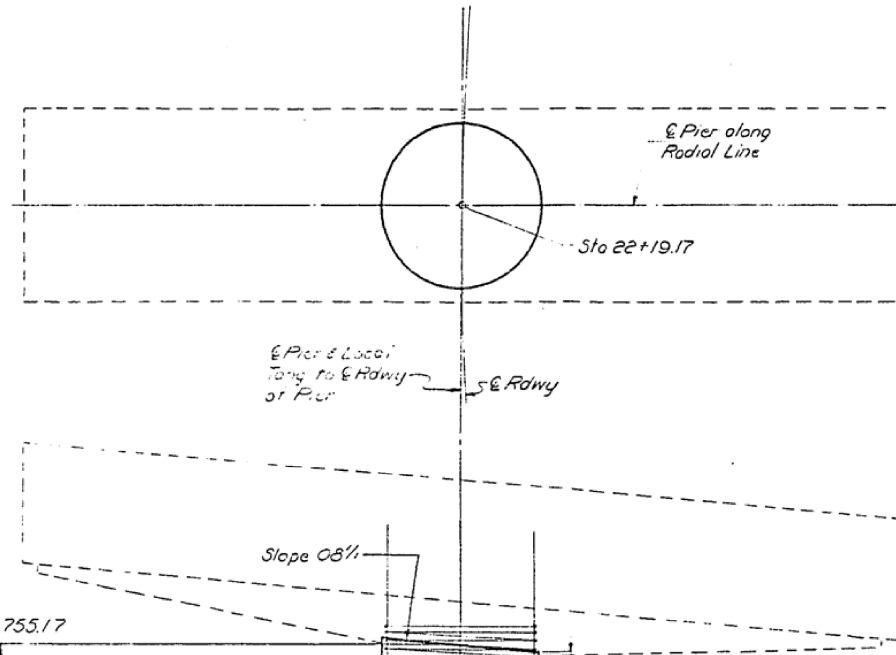
FOOTING PLAN



SECTION B-B

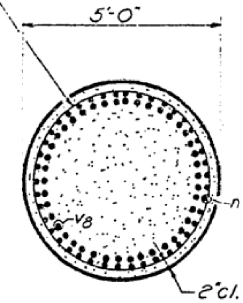
Note:  
Construction joints will  
not be permitted in  
footing.  
Max. Basic Soil Pressure = 3.52 T/sq'

DESIGNED	James M. Pence	EXAMINED	July 23 1965
CHECKED	Louis Haverig	PASSED	H. J. Austin
DRAWN	F. G. Dickson	APPROVED	J. C. Ryan
CHECKED	J. W. JNP		



ELEVATION

1/2" Spiral 3" pitch Two  
extra turns top &  
bottom. Extend spiral  
hooping 4" into pier cap  
Provide 4" #4 spacers  
each spiral

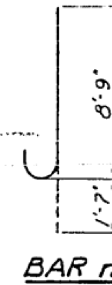


SECTION A-A

BILL OF MATERIAL

Bar	No	Size	Length	Shape
n	42	#11	10'-4"	C
t	15	#5	7'-9"	
t2	27	#8	13'-9"	
v2	42	#11	30'-11"	
w	9	#5	13'-9"	
w2	25	#10	19'-9"	
SP3	1	#4	26'-6"	WMM
Class X Concrete		Cu. Yds	56.3	
* Reinforcement Bars		Lbs.	13,170	
Name Plate		Each	1	

\*Includes weight of Spiral spacers



BAR n

PIER 3  
F.A.I. RT. 74 SEC. 10-4 HB-2  
CHAMPAIGN COUNTY  
STA. 1547 + 92.48