

F.A.S. RTE.	SECTION	COUNTY	TOTAL SHEETS	SHEET NO.
522	(41-15D)RS	Champaign	11	1
		ILLINOIS	CONTRACT NO. 70A08	

STATE OF ILLINOIS
DEPARTMENT OF TRANSPORTATION
DIVISION OF HIGHWAYS

**PROPOSED
HIGHWAY PLANS**

FAS ROUTE 522 (SIDNEY-LONGVIEW RD.)
SECTION (41-15D)RS

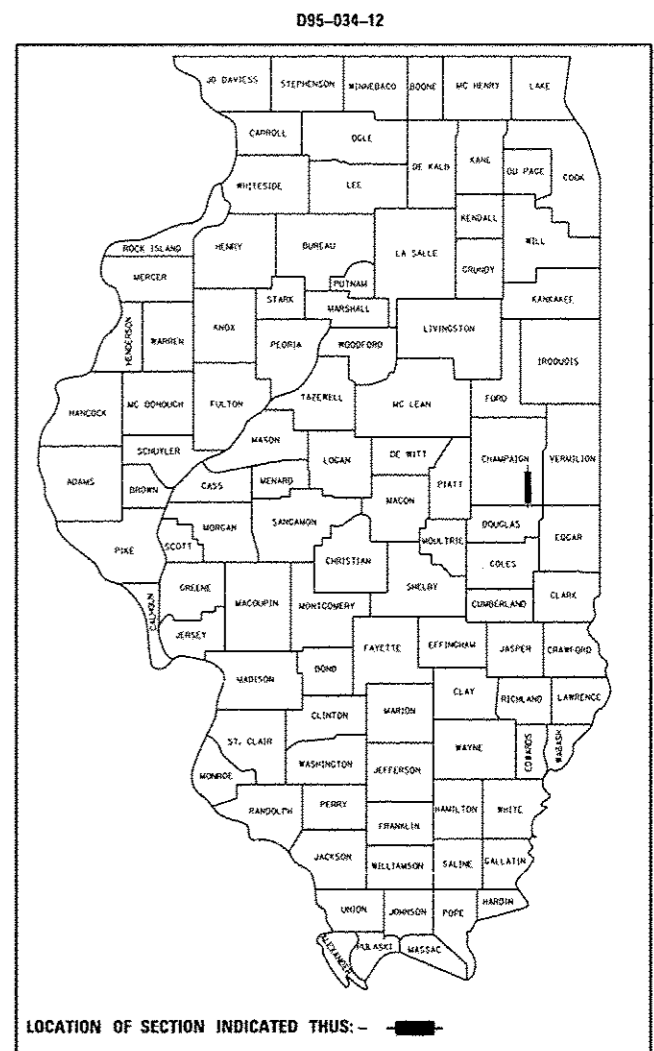
RESURFACING
CHAMPAIGN COUNTY

C-95-034-12
BONGARD RD. TO BROADLANDS RD.

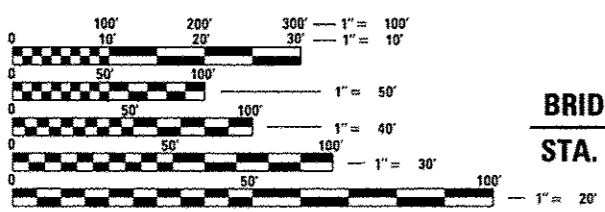
FOR INDEX OF SHEETS, SEE SHEET NO. 2
FOR SUMMARY OF QUANTITIES, SEE SHEET NO. 4

DESIGN DESIGNATION:
MAJOR COLLECTOR

CURRENT ADT: (2012)
750

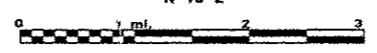
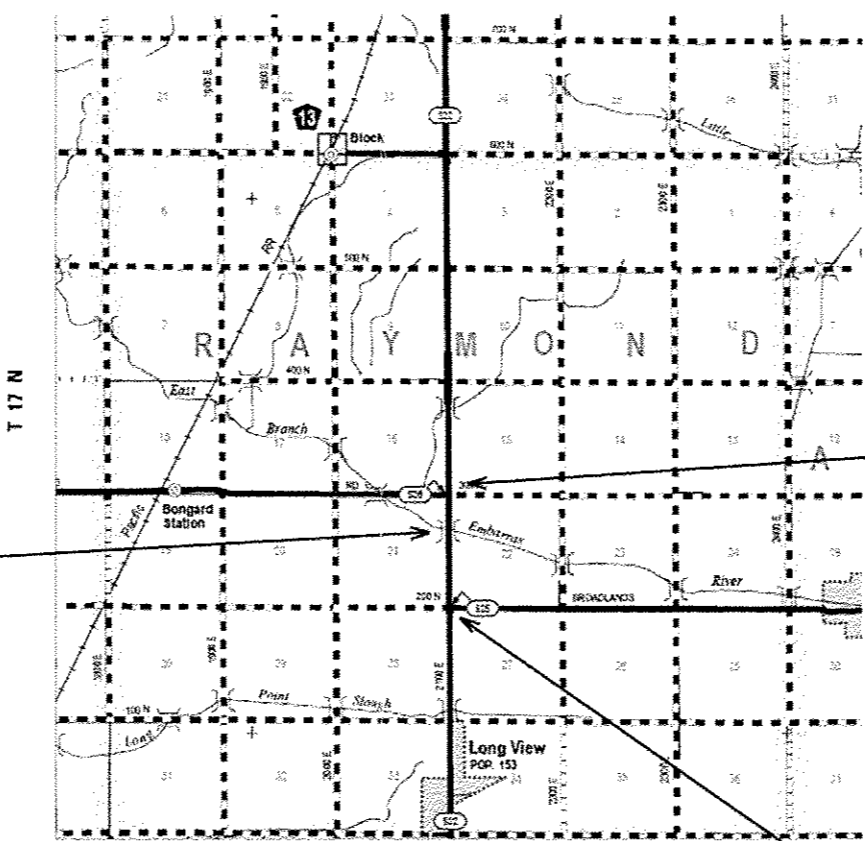


LOCATION OF SECTION INDICATED THUS: —



FULL SIZE PLANS HAVE BEEN PREPARED USING STANDARD ENGINEERING SCALES. REDUCED SIZED PLANS WILL NOT CONFORM TO STANDARD SCALES. IN MAKING MEASUREMENTS ON REDUCED PLANS, THE ABOVE SCALES MAY BE USED.

J.U.L.I.E.
JOINT UTILITY LOCATION INFORMATION FOR EXCAVATION
1-800-892-0123
OR 811 RAYMOND TOWNSHIP



GROSS LENGTH = 5,353.80 FT. = 1.014 MILES
NET LENGTH = 5,307.30 FT. = 1.005 MILES

PROJECT ENGINEER: JASON STULTS (217-465-4181)
PROJECT MANAGER: RUSTIN KEYS
DESIGNER : KARY DAWSON
CONTRACT NO. 70A08

PROJECT BEGINS, STA. 372 + 12.5

PROJECT ENDS, STA. 425 + 66.3

STATE OF ILLINOIS
DEPARTMENT OF TRANSPORTATION
DIVISION OF HIGHWAYS

SUBMITTED *January 30* 20 *13*

DEPUTY DIRECTOR OF HIGHWAYS REGION ENGINEER
May 10 20 *13*
John D. Baranelli, P.E.
ENGINEER OF DESIGN AND ENVIRONMENT

May 10 20 *13*
Omer Osman, P.E.
DIRECTOR OF HIGHWAYS, CHIEF ENGINEER

PRINTED BY THE AUTHORITY
OF THE STATE OF ILLINOIS