

STATE OF ILLINOIS
 DEPARTMENT OF TRANSPORTATION
 DIVISION OF HIGHWAYS

**PROPOSED
 HIGHWAY PLANS**

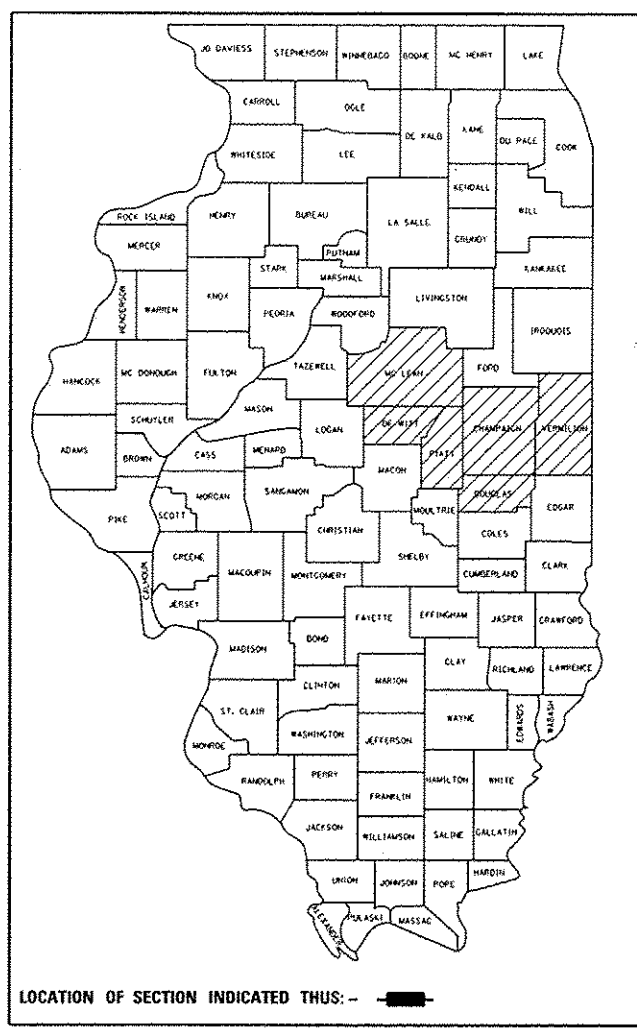
VARIOUS ROUTES
 SECTION SIGN & PVT MRK UPGRADES 2013-1
 PROJECT HSIF-0009(935)
 PAVEMENT MARKING SIGNING (NEW)
 VARIOUS COUNTIES

F.A. RTE.	SECTION	COUNTY	TOTAL SHEETS	SHEET NO.
VAR.		ILLINOIS	28	1
			CONTRACT NO. 70A27	

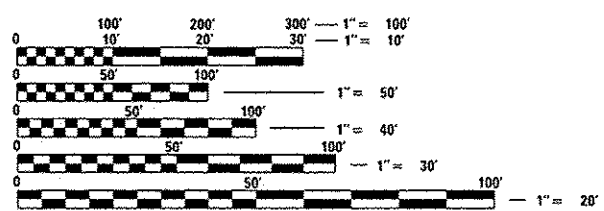
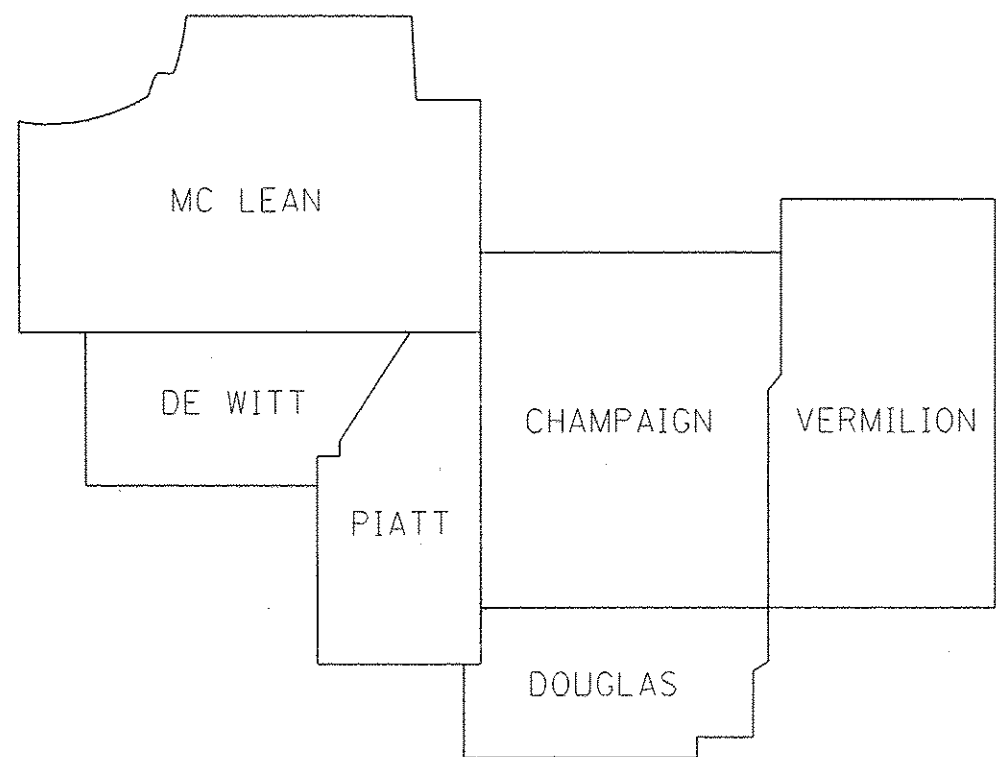
*SIGN & PVT MRK UPGRADES 2013-1

FOR INDEX OF SHEETS, SEE SHEET NO. 2
 FOR SUMMARY OF QUANTITIES, SEE SHEET NO. 3
 FOR LOCATION MAP, SEE SHEETS NO. 4 - 9

D-95-013-13



C-95-013-13



FULL SIZE PLANS HAVE BEEN PREPARED USING STANDARD ENGINEERING SCALES. REDUCED SIZED PLANS WILL NOT CONFORM TO STANDARD SCALES. IN MAKING MEASUREMENTS ON REDUCED PLANS, THE ABOVE SCALES MAY BE USED.

J.U.L.I.E.
 JOINT UTILITY LOCATION INFORMATION FOR EXCAVATION
 1-800-892-0123
 OR 811

PROJECT ENGINEER JASON STULTS
 SQUAD LEADER RYAN CARROLL
 PHONE NUMBER (217) 465-4181
 CONTRACT NO. 70A27

STATE OF ILLINOIS
 DEPARTMENT OF TRANSPORTATION
 DIVISION OF HIGHWAYS

SUBMITTED March 28 2013

DEPUTY DIRECTOR OF HIGHWAYS, REGION 3 ENGINEER
May 10 2013
 John D. Baranzelli, PE, Jr.
 acting ENGINEER OF DESIGN AND ENVIRONMENT

May 10 2013
 Omar Osman, PE, Jr.
 DIRECTOR OF HIGHWAYS, CHIEF ENGINEER

PRINTED BY THE AUTHORITY
 OF THE STATE OF ILLINOIS