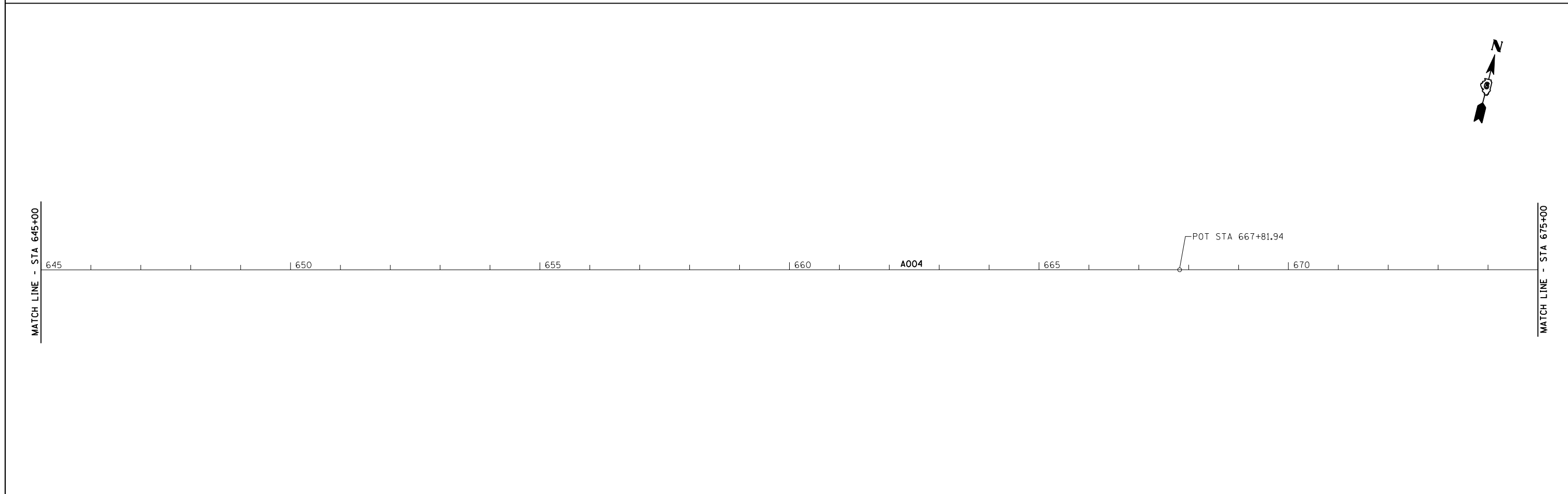


EXIST. CURVE 514
 PI STA. = 630+85.26
 Δ = 13° 00' 21" (LT)
 D = 0° 45' 01"
 R = 7,635.91'
 T = 870.40'
 L = 1,733.32'
 E = 49.45'
 e = -----
 T.R. = -----
 S.E. RUN = -----
 P.C. STA. = 622+14.86
 P.T. STA. = 639+48.18



	JOB = 2236.10	DESIGNED - NAK	REVISED -	STATE OF ILLINOIS DEPARTMENT OF TRANSPORTATION	ALIGNMENT, CROSS TIES & BENCHMARKS	F.A.I. RTE.	SECTION	COUNTY	TOTAL SHEETS	SHEET NO.
	FILE NAME = D672E11-sht-ATB.dgn	DRAWN - TJD	REVISED -			55	D6 LOGAN CO BR 2011-1	LOGAN	429	64
	PLOT SCALE = 200.0000' / IN.	CHECKED - NAK	REVISED -			CONTRACT NO. 72E11				
Civil and Structural Engineering	PLOT DATE = 3/18/2013	DATE - 1/14/2011	REVISED -	SCALE:	SHEET NO. 2 OF 12 SHEETS	STA. 615+00 TO STA. 675+00	FED. ROAD DIST. NO.	ILLINOIS FED. AID PROJECT		