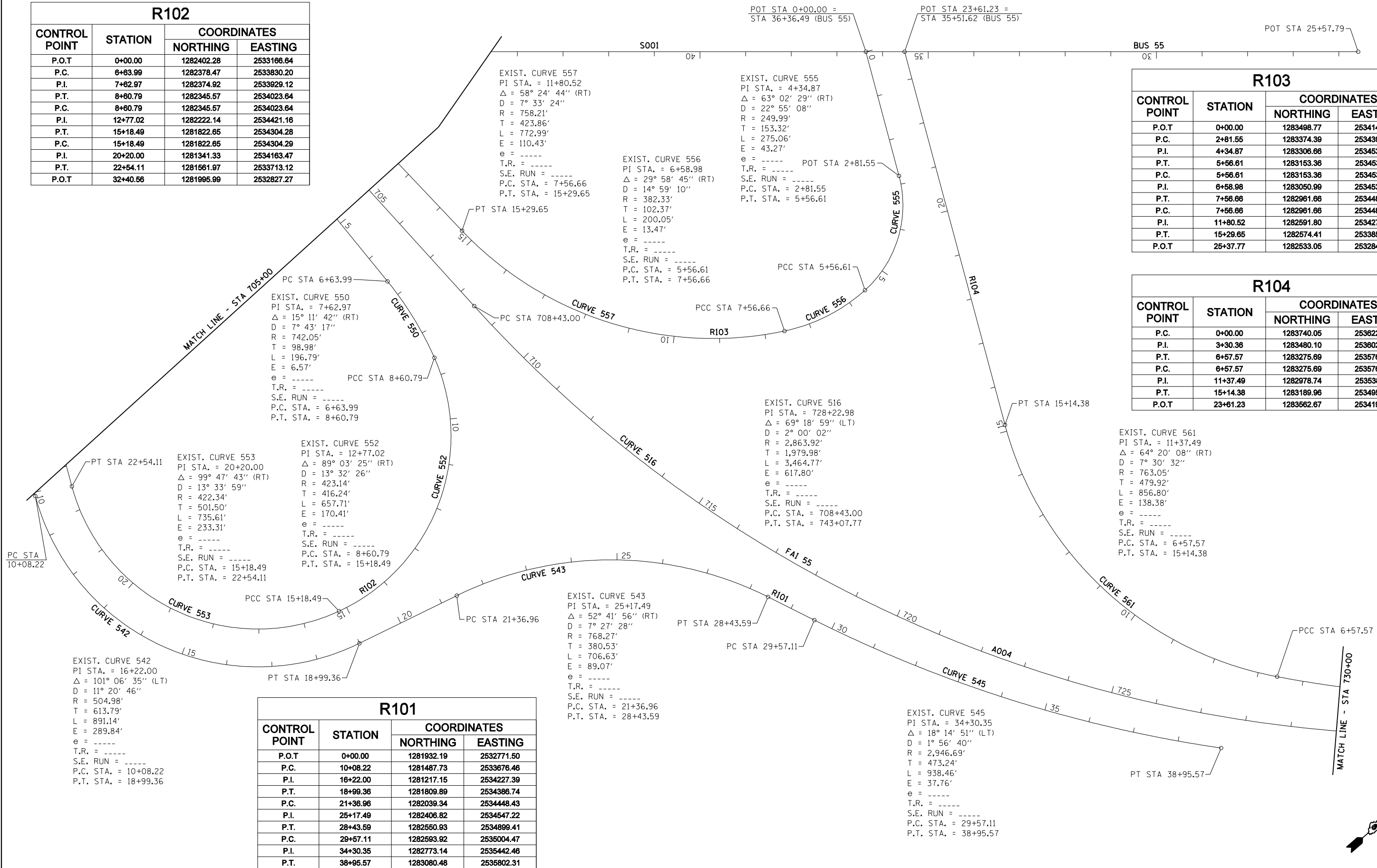


R102			
CONTROL POINT	STATION	COORDINATES	
		NORTHING	EASTING
P.O.T	0+00.00	1282402.28	2533166.64
P.C.	6+83.99	1282378.47	2533830.20
P.I.	7+62.97	1282374.92	2533929.12
P.T.	8+80.79	1282345.57	2534023.64
P.C.	8+80.79	1282345.57	2534023.64
P.I.	12+77.02	1282222.14	2534421.16
P.T.	15+18.49	1281822.65	2534304.28
P.C.	15+18.49	1281822.65	2534304.29
P.I.	20+20.00	1281341.33	2534163.47
P.T.	22+54.11	1281561.97	2533713.12
P.O.T	32+40.56	1281995.99	2532827.27

R103			
CONTROL POINT	STATION	COORDINATES	
		NORTHING	EASTING
P.O.T	0+00.00	1283498.77	2534140.98
P.C.	2+81.55	1283374.39	2534393.57
P.I.	4+34.87	1283306.68	2534531.12
P.T.	5+56.61	1283153.38	2534533.11
P.C.	5+56.61	1283153.38	2534533.11
P.I.	6+58.98	1283050.99	2534534.44
P.T.	7+56.66	1282961.66	2534484.44
P.C.	7+56.66	1282961.66	2534484.44
P.I.	11+80.52	1282591.80	2534277.42
P.T.	15+29.65	1282574.41	2533853.92
P.O.T	25+37.77	1282533.05	2532846.65

R104			
CONTROL POINT	STATION	COORDINATES	
		NORTHING	EASTING
P.C.	0+00.00	1283740.05	2536228.62
P.I.	3+30.36	1283480.10	2536024.75
P.T.	6+57.57	1283275.69	2535765.23
P.C.	6+57.57	1283275.69	2535765.23
P.I.	11+37.49	1282978.74	2535388.21
P.T.	15+14.38	1283189.96	2534957.27
P.O.T	23+61.23	1283562.67	2534196.84

R101			
CONTROL POINT	STATION	COORDINATES	
		NORTHING	EASTING
P.O.T	0+00.00	1281932.19	2532771.50
P.C.	10+08.22	1281487.73	2533676.46
P.I.	16+22.00	1281217.15	2534227.39
P.T.	18+99.36	1281809.89	2534386.74
P.C.	21+36.96	1282039.34	2534448.43
P.I.	25+17.49	1282406.82	2534547.22
P.T.	28+43.59	1282550.93	2534899.41
P.C.	29+57.11	1282593.92	2535004.47
P.I.	34+30.35	1282773.14	2535442.46
P.T.	38+95.57	1283080.48	2535802.31



JOB = 2236.10
 FILE NAME = D672E11-sh1-ATB.dgn
 PLOT SCALE = 200.0000' / IN.
 PLOT DATE = 3/18/2013

DESIGNED - NAK
 DRAWN - TJD
 CHECKED - NAK
 DATE - 1/14/2011

REVISED -
 REVISED -
 REVISED -
 REVISED -

STATE OF ILLINOIS
 DEPARTMENT OF TRANSPORTATION

ALIGNMENT, CROSS TIES
 & BENCHMARKS
 SCALE: SHEET NO. 4 OF 12 SHEETS STA. 705+00 TO STA. 730+00

F.A.I. RTE.	SECTION	COUNTY	TOTAL SHEETS	SHEET NO.
55	D6 LOGAN CO BR 2011-1	LOGAN	429	66
CONTRACT NO. 72E11				
FED. ROAD DIST. NO. ILLINOIS FED. AID PROJECT				

