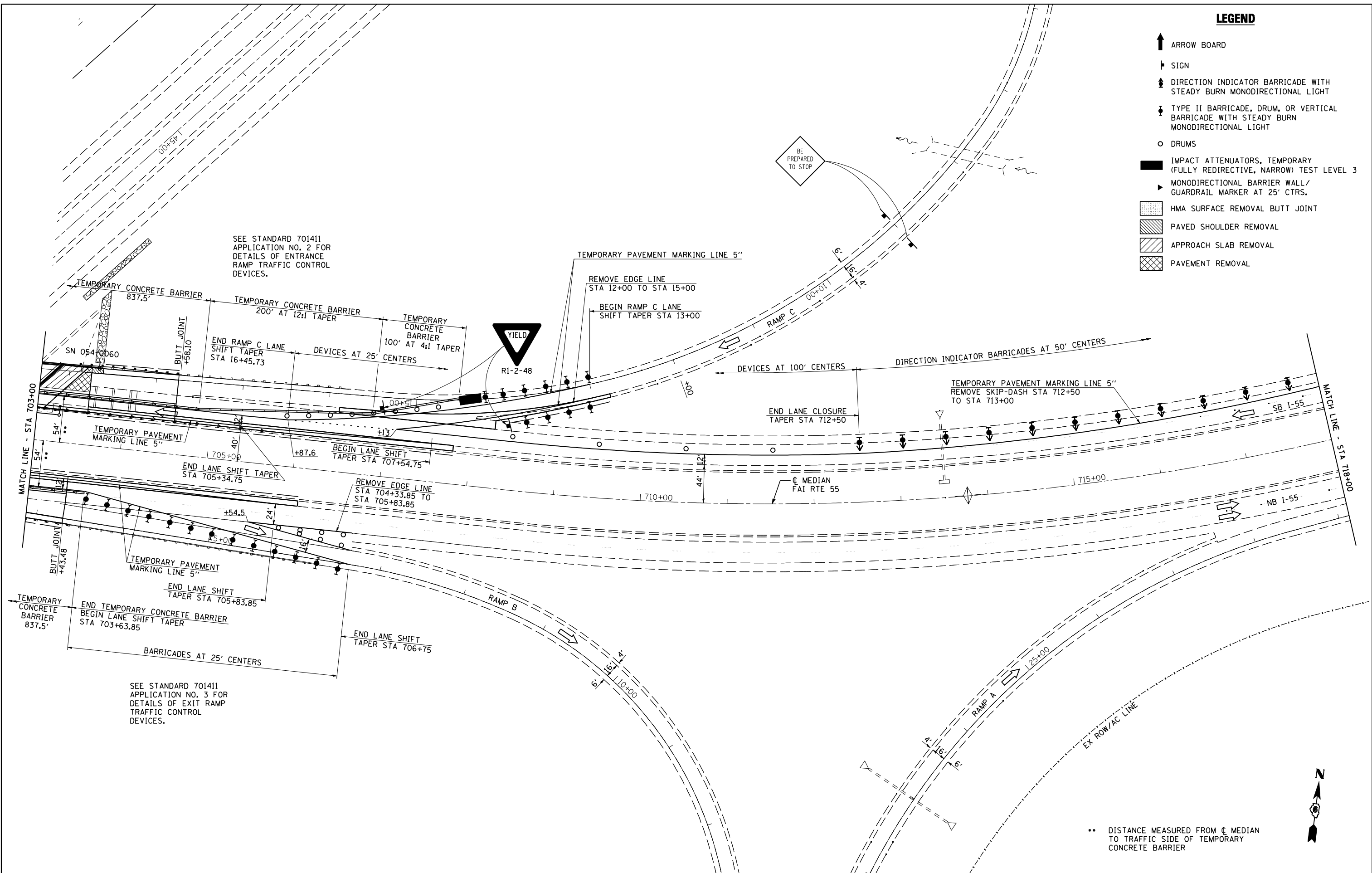


**LEGEND**

- ↑ ARROW BOARD
- ↓ SIGN
- ⬇️ DIRECTION INDICATOR BARRICADE WITH STEADY BURN MONODIRECTIONAL LIGHT
- ⬇️ TYPE II BARRICADE, DRUM, OR VERTICAL BARRICADE WITH STEADY BURN MONODIRECTIONAL LIGHT
- DRUMS
- ▬ IMPACT ATTENUATORS, TEMPORARY (FULLY REDIRECTIVE, NARROW) TEST LEVEL 3
- ▴ MONODIRECTIONAL BARRIER WALL/GUARDRAIL MARKER AT 25' CTRS.
- ▨ HMA SURFACE REMOVAL BUTT JOINT
- ▧ PAVED SHOULDER REMOVAL
- ▩ APPROACH SLAB REMOVAL
- ▤ PAVEMENT REMOVAL



SEE STANDARD 701411 APPLICATION NO. 2 FOR DETAILS OF ENTRANCE RAMP TRAFFIC CONTROL DEVICES.

END RAMP C LANE SHIFT TAPER STA 16+45.73

DEVICES AT 25' CENTERS

TEMPORARY CONCRETE BARRIER 100' AT 4:1 TAPER

REMOVE EDGE LINE STA 12+00 TO STA 15+00  
BEGIN RAMP C LANE SHIFT TAPER STA 13+00

DEVICES AT 100' CENTERS

DIRECTION INDICATOR BARRICADES AT 50' CENTERS

TEMPORARY PAVEMENT MARKING LINE 5" REMOVE SKIP-DASH STA 712+50 TO STA 713+00

END LANE CLOSURE TAPER STA 712+50

BEGIN LANE SHIFT TAPER STA 707+54.75

REMOVE EDGE LINE STA 704+33.85 TO STA 705+83.85

TEMPORARY PAVEMENT MARKING LINE 5"

END LANE SHIFT TAPER STA 705+83.85

END TEMPORARY CONCRETE BARRIER BEGIN LANE SHIFT TAPER STA 703+63.85

END LANE SHIFT TAPER STA 706+75

SEE STANDARD 701411 APPLICATION NO. 3 FOR DETAILS OF EXIT RAMP TRAFFIC CONTROL DEVICES.

\*\* DISTANCE MEASURED FROM  $\phi$  MEDIAN TO TRAFFIC SIDE OF TEMPORARY CONCRETE BARRIER

**CEC** Cummins Engineering Corporation  
Civil and Structural Engineering

JOB = 2265.5	DESIGNED - NAK	REVISED -
FILE NAME = 0672E11-sh1-S2-6061.dgn	DRAWN - TJD	REVISED -
PLOT SCALE = 100.0000' / IN.	CHECKED - NAK	REVISED -
PLOT DATE = 3/18/2013	DATE - 3/4/2011	REVISED -

**STATE OF ILLINOIS  
DEPARTMENT OF TRANSPORTATION**

**STAGE 2 TRAFFIC CONTROL & PROTECTION DETAIL  
SN 054-0060 & SN 054-0061**

SCALE: SHEET NO. 3 OF 4 SHEETS STA. TO STA.

F.A.I. RTE.	SECTION	COUNTY	TOTAL SHEETS	SHEET NO.
55	D6 LOGAN CO BR 2011-1	LOGAN	429	122
FED. ROAD DIST. NO. ILLINOIS FED. AID PROJECT			CONTRACT NO. 72E11	