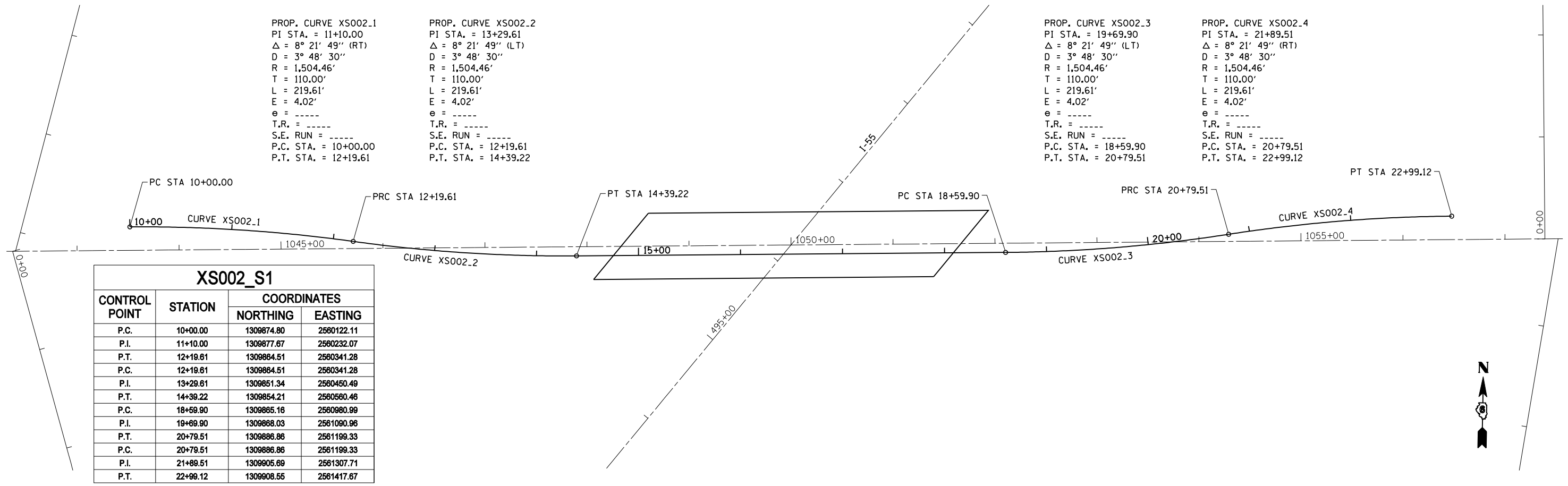


PROP. CURVE XS002.1
 PI STA. = 11+10.00
 $\Delta = 8^\circ 21' 49''$ (RT)
 $D = 3^\circ 48' 30''$
 $R = 1,504.46'$
 $T = 110.00'$
 $L = 219.61'$
 $E = 4.02'$
 $e = \text{-----}$
 $T.R. = \text{-----}$
 $S.E. \text{ RUN} = \text{-----}$
 P.C. STA. = 10+00.00
 P.T. STA. = 12+19.61

PROP. CURVE XS002.2
 PI STA. = 13+29.61
 $\Delta = 8^\circ 21' 49''$ (LT)
 $D = 3^\circ 48' 30''$
 $R = 1,504.46'$
 $T = 110.00'$
 $L = 219.61'$
 $E = 4.02'$
 $e = \text{-----}$
 $T.R. = \text{-----}$
 $S.E. \text{ RUN} = \text{-----}$
 P.C. STA. = 12+19.61
 P.T. STA. = 14+39.22

PROP. CURVE XS002.3
 PI STA. = 19+69.90
 $\Delta = 8^\circ 21' 49''$ (LT)
 $D = 3^\circ 48' 30''$
 $R = 1,504.46'$
 $T = 110.00'$
 $L = 219.61'$
 $E = 4.02'$
 $e = \text{-----}$
 $T.R. = \text{-----}$
 $S.E. \text{ RUN} = \text{-----}$
 P.C. STA. = 18+59.90
 P.T. STA. = 20+79.51

PROP. CURVE XS002.4
 PI STA. = 21+89.51
 $\Delta = 8^\circ 21' 49''$ (RT)
 $D = 3^\circ 48' 30''$
 $R = 1,504.46'$
 $T = 110.00'$
 $L = 219.61'$
 $E = 4.02'$
 $e = \text{-----}$
 $T.R. = \text{-----}$
 $S.E. \text{ RUN} = \text{-----}$
 P.C. STA. = 20+79.51
 P.T. STA. = 22+99.12



XS002_S1			
CONTROL POINT	STATION	COORDINATES	
		NORTHING	EASTING
P.C.	10+00.00	1309874.80	2580122.11
P.I.	11+10.00	1309877.67	2580232.07
P.T.	12+19.61	1309884.51	2580341.28
P.C.	12+19.61	1309884.51	2580341.28
P.I.	13+29.61	1309851.34	2580450.49
P.T.	14+39.22	1309854.21	2580560.46
P.C.	18+59.90	1309865.16	2580980.99
P.I.	19+69.90	1309868.03	2581090.96
P.T.	20+79.51	1309886.86	2581199.33
P.C.	20+79.51	1309886.86	2581199.33
P.I.	21+89.51	1309905.69	2581307.71
P.T.	22+99.12	1309908.55	2581417.67

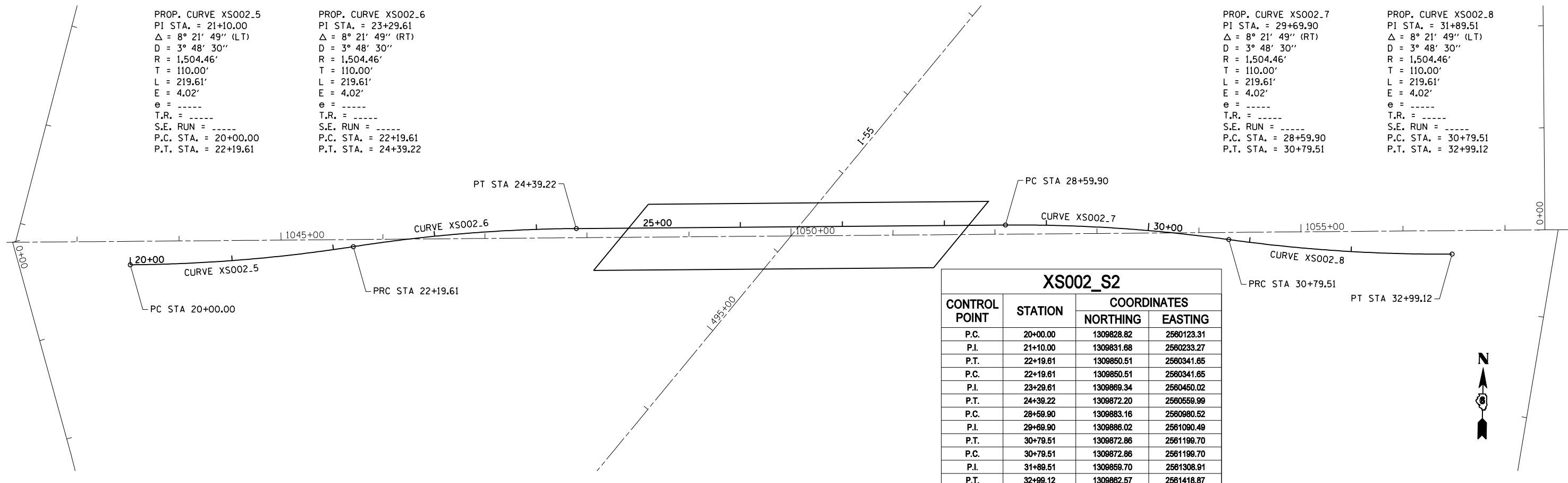


PROP. CURVE XS002.5
 PI STA. = 21+10.00
 $\Delta = 8^\circ 21' 49''$ (LT)
 $D = 3^\circ 48' 30''$
 $R = 1,504.46'$
 $T = 110.00'$
 $L = 219.61'$
 $E = 4.02'$
 $e = \text{-----}$
 $T.R. = \text{-----}$
 $S.E. \text{ RUN} = \text{-----}$
 P.C. STA. = 20+00.00
 P.T. STA. = 22+19.61

PROP. CURVE XS002.6
 PI STA. = 23+29.61
 $\Delta = 8^\circ 21' 49''$ (RT)
 $D = 3^\circ 48' 30''$
 $R = 1,504.46'$
 $T = 110.00'$
 $L = 219.61'$
 $E = 4.02'$
 $e = \text{-----}$
 $T.R. = \text{-----}$
 $S.E. \text{ RUN} = \text{-----}$
 P.C. STA. = 22+19.61
 P.T. STA. = 24+39.22

PROP. CURVE XS002.7
 PI STA. = 29+69.90
 $\Delta = 8^\circ 21' 49''$ (RT)
 $D = 3^\circ 48' 30''$
 $R = 1,504.46'$
 $T = 110.00'$
 $L = 219.61'$
 $E = 4.02'$
 $e = \text{-----}$
 $T.R. = \text{-----}$
 $S.E. \text{ RUN} = \text{-----}$
 P.C. STA. = 28+59.90
 P.T. STA. = 30+79.51

PROP. CURVE XS002.8
 PI STA. = 31+89.51
 $\Delta = 8^\circ 21' 49''$ (LT)
 $D = 3^\circ 48' 30''$
 $R = 1,504.46'$
 $T = 110.00'$
 $L = 219.61'$
 $E = 4.02'$
 $e = \text{-----}$
 $T.R. = \text{-----}$
 $S.E. \text{ RUN} = \text{-----}$
 P.C. STA. = 30+79.51
 P.T. STA. = 32+99.12



XS002_S2			
CONTROL POINT	STATION	COORDINATES	
		NORTHING	EASTING
P.C.	20+00.00	1309828.82	2580123.31
P.I.	21+10.00	1309831.68	2580233.27
P.T.	22+19.61	1309850.51	2580341.65
P.C.	22+19.61	1309850.51	2580341.65
P.I.	23+29.61	1309869.34	2580450.02
P.T.	24+39.22	1309872.20	2580559.99
P.C.	28+59.90	1309883.16	2580980.52
P.I.	29+69.90	1309886.02	2581090.49
P.T.	30+79.51	1309872.86	2581199.70
P.C.	30+79.51	1309872.86	2581199.70
P.I.	31+89.51	1309859.70	2581308.81
P.T.	32+99.12	1309862.57	2581418.87



JOB = 2265.5
 FILE NAME = D672E11-sh1-a11-stg.dgn
 PLOT SCALE = 100.0000 "/> IN.
 PLOT DATE = 3/18/2013

DESIGNED - NAK
 DRAWN - TJD
 CHECKED - NAK
 DATE - 2/10/2011

REVISED -
 REVISED -
 REVISED -
 REVISED -

STATE OF ILLINOIS
 DEPARTMENT OF TRANSPORTATION

STAGE 1 AND STAGE 2
 CROSSOVER ALIGNMENTS SN 054-0069

SCALE: SHEET NO. OF SHEETS STA. TO STA.

F.A.I. RTE.	SECTION	COUNTY	TOTAL SHEETS	SHEET NO.
55	D6 LOGAN CO BR 2011-1	LOGAN	429	168
FED. ROAD DIST. NO. ILLINOIS FED. AID PROJECT			CONTRACT NO. 72E11	