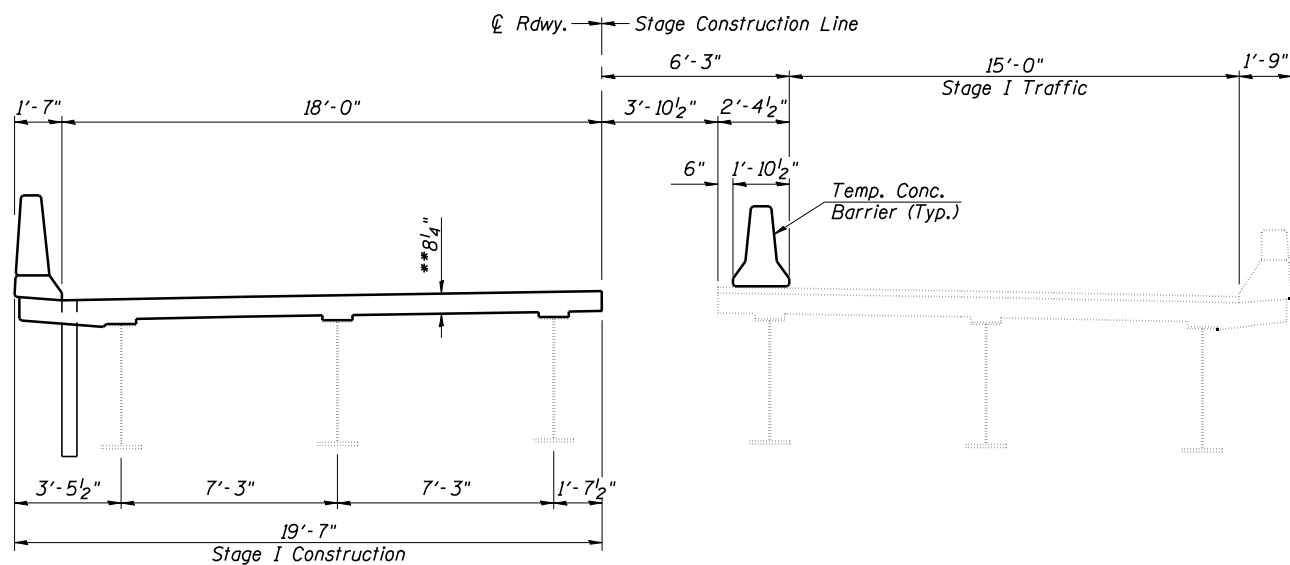
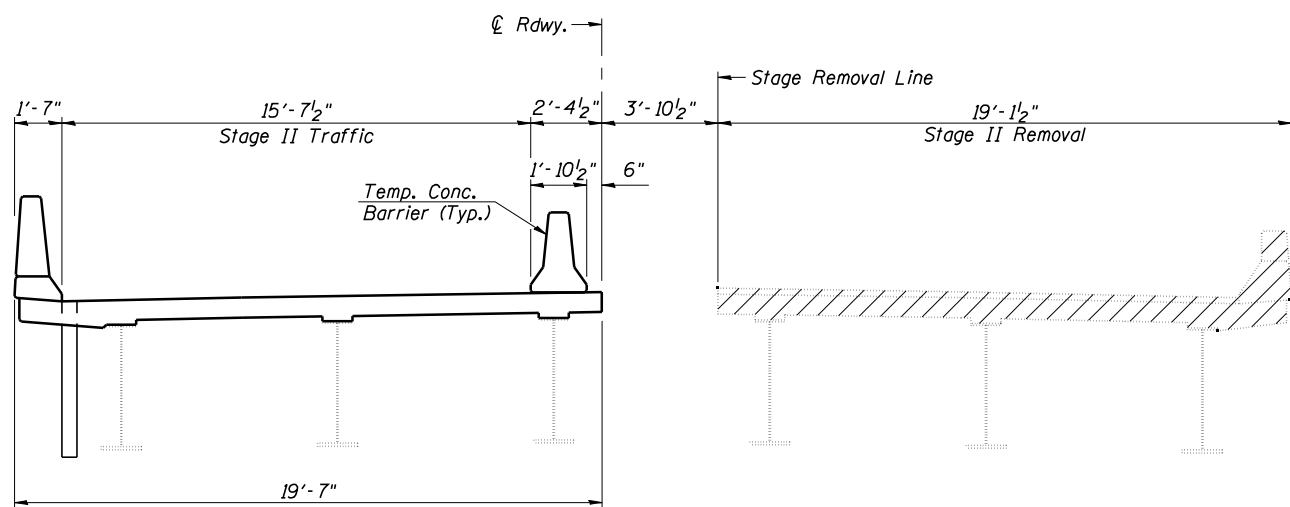


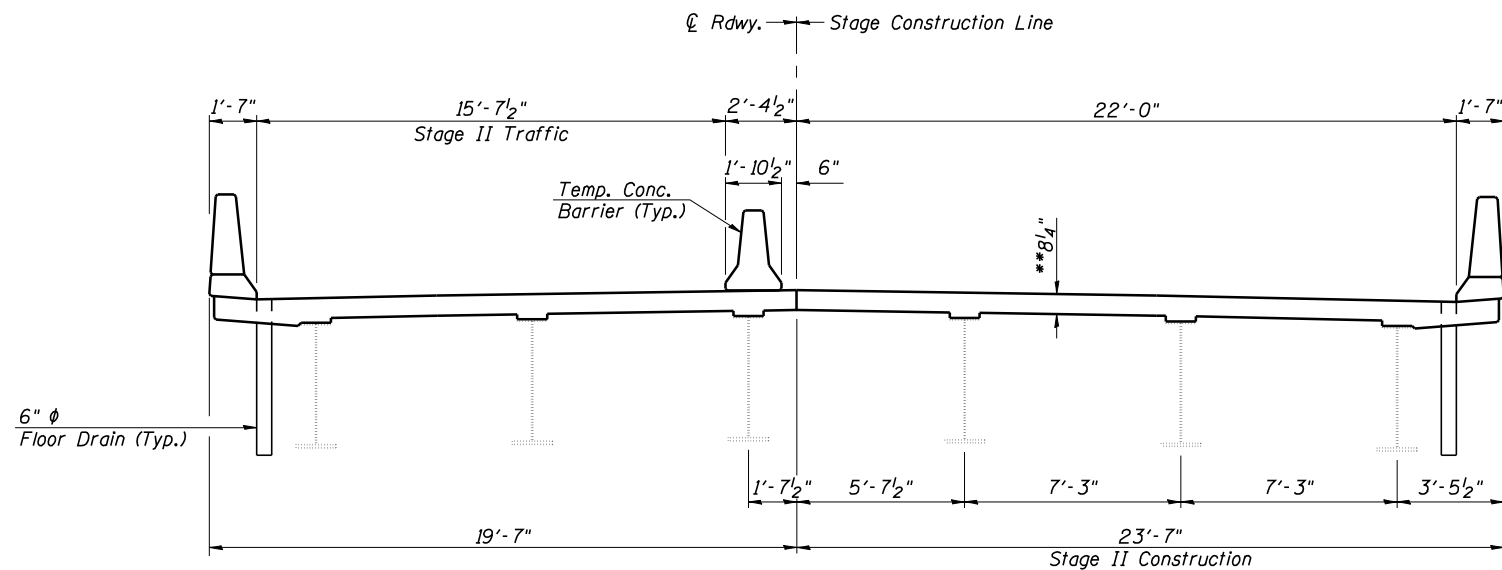
STAGE I REMOVAL
(Looking in the direction of traffic)



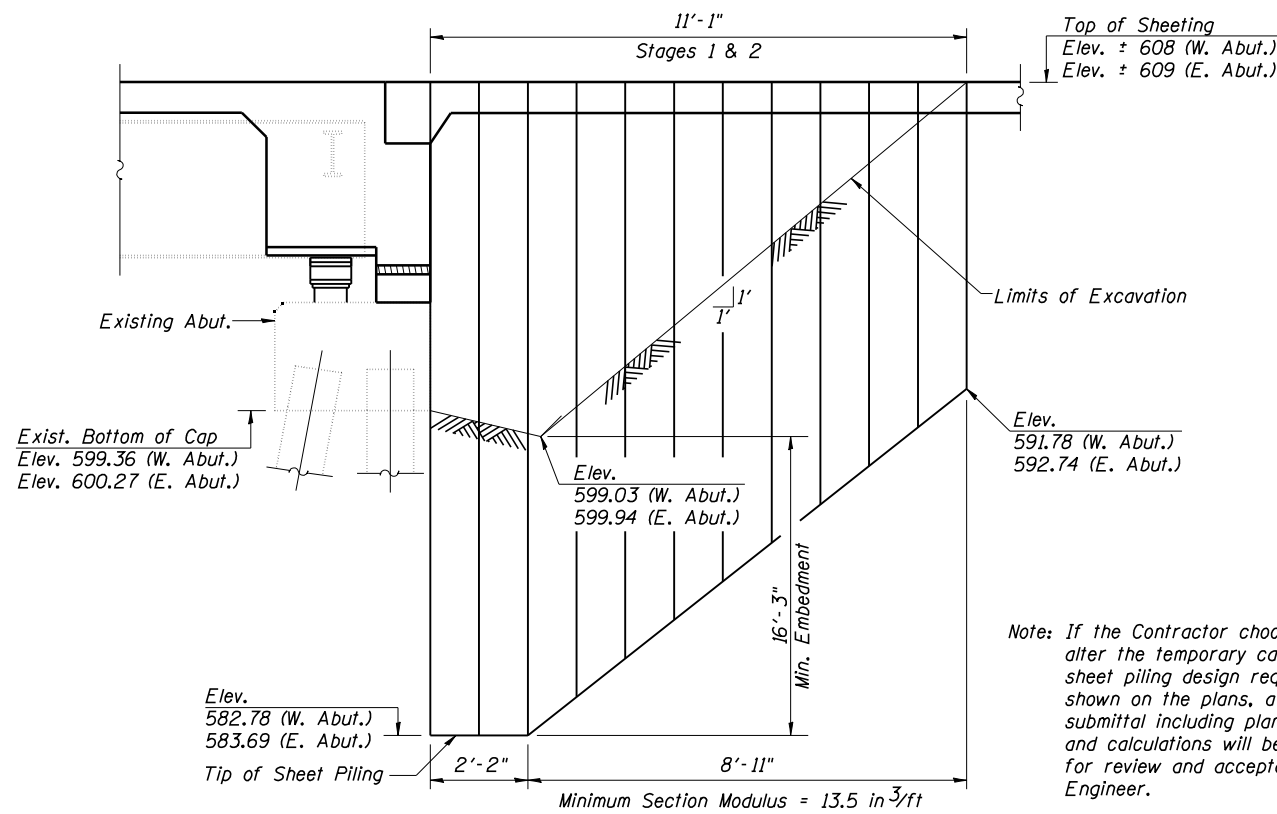
STAGE I CONSTRUCTION
(Looking in the direction of traffic)



STAGE II REMOVAL
(Looking in the direction of traffic)



STAGE II CONSTRUCTION
(Looking in the direction of traffic)



Note: If the Contractor chooses to alter the temporary cantilevered sheet piling design requirements shown on the plans, a design submittal including plan details and calculations will be required for review and acceptance by the Engineer.

Note
Plan elevations relative to the existing structure have been taken from existing plans and reduced by 0.44 feet to match benchmark datum

TEMPORARY SHEET PILING DETAILS



JOB = 2276.3	DESIGNED - AAN	REVISED -
FILE = 0540057_0058-Stage.dgn	CHECKED - ENV	REVISED -
DATE = 2/11/2013	DRAWN - SJS	REVISED -
	CHECKED - AAN	REVISED -

**STATE OF ILLINOIS
DEPARTMENT OF TRANSPORTATION**

**STAGE CONSTRUCTION DETAILS & TEMPORARY SHEET PILING
STRUCTURE NO. 054-0057 (NB) & 054-0058 (SB)**

SHEET NO. 3 OF 31 SHEETS

F.A.I. RTE.	SECTION	COUNTY	TOTAL SHEETS	SHEET NO.
55	D6 LOGAN CO BR 2011-1	LOGAN	429	202
CONTRACT NO. 72E11				

ILLINOIS FED. AID PROJECT