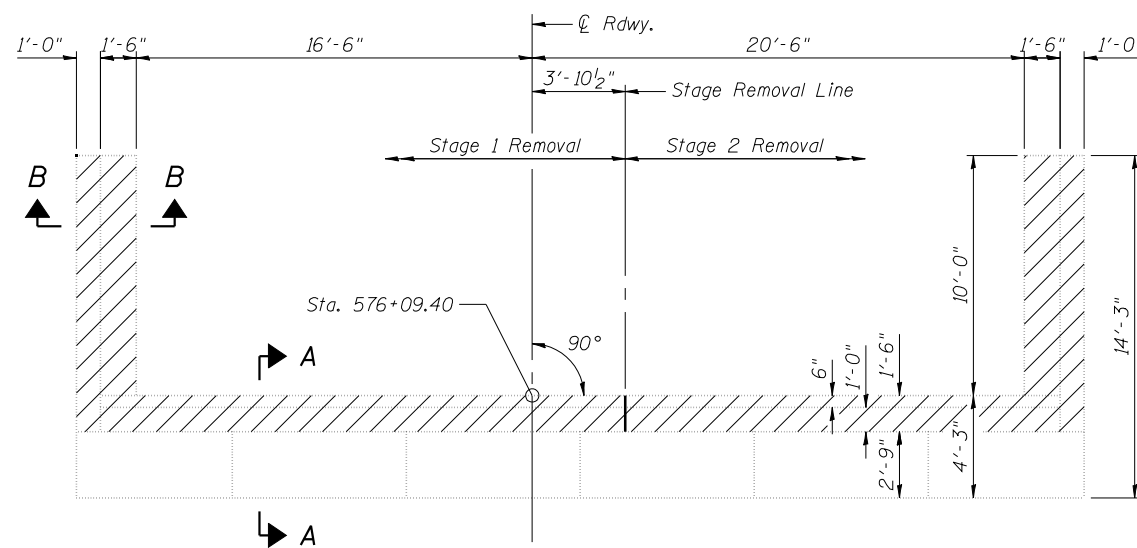
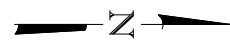
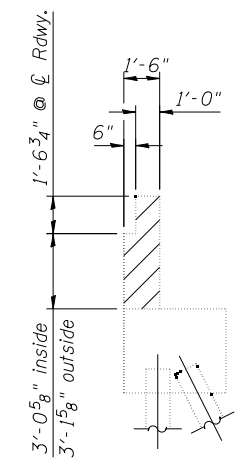


WING WALL ELEVATION

SECTION B-B



PLAN - WEST ABUTMENTS
S.N. 054-0058 SB SHOWN
S.N. 054-0057 NB SIMILAR



SECTION A-A

TWO ABUTMENTS
BILL OF MATERIAL

Item	Unit	Total
Concrete Removal	Cu. Yd.	39.5

NOTE

Plan elevations relative to the existing structure have been taken from existing plans and reduced by 0.44 feet to match benchmark datum.



JOB = 2276.3
 FILE = 0540057_0058-WestAbutRem.dgn
 DATE = 2/11/2013

DESIGNED - AAN
 CHECKED - MDC
 DRAWN - SJS
 CHECKED - MDC

REVISED -
 REVISED -
 REVISED -
 REVISED -

STATE OF ILLINOIS
DEPARTMENT OF TRANSPORTATION

WEST ABUTMENTS CONCRETE REMOVAL
STRUCTURE NO. 054-0057 (NB) & 054-0058 (SB)

SHEET NO. 20 OF 31 SHEETS

F.A.I. RTE.	SECTION	COUNTY	TOTAL SHEETS	SHEET NO.
55	D6 LOGAN CO BR 2011-1	LOGAN	429	219
				CONTRACT NO. 72E11

ILLINOIS FED. AID PROJECT