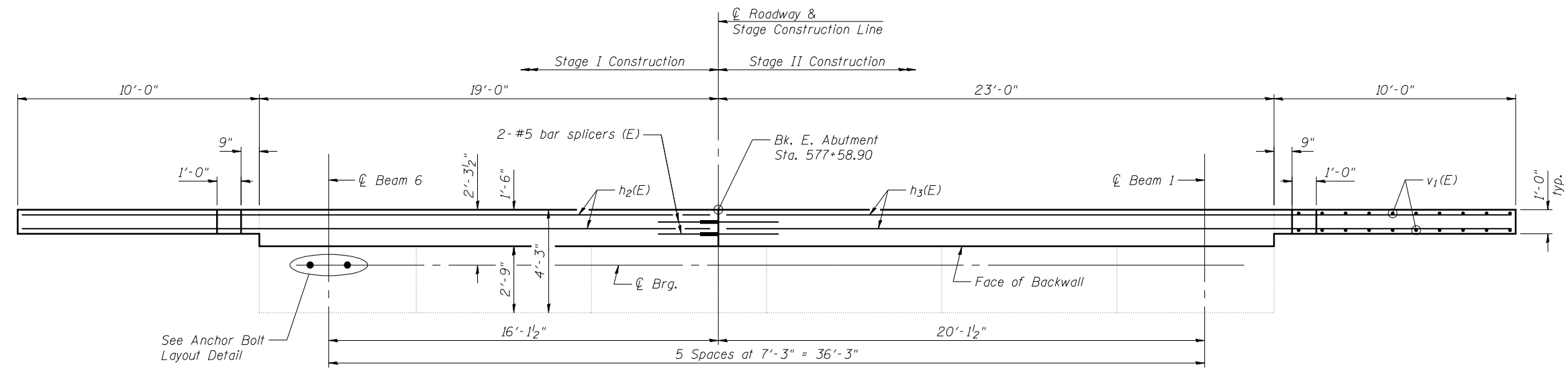
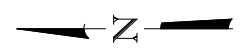


MINIMUM BAR LAP
#5 bar = 3'-3"

ELEVATION
(Looking East)

SECTION A-A

* Denotes bar to be epoxy grouted in accordance with Section 584 of the Standard Specifications. Minimum embedment = 9". Cost included with Concrete Structures.



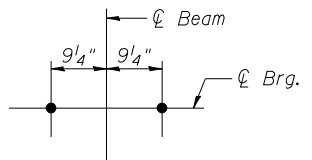
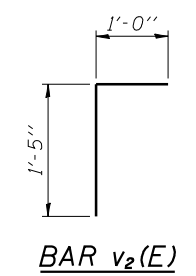
PLAN - EAST ABUTMENT NB

**EAST ABUTMENT NB
BILL OF MATERIAL**

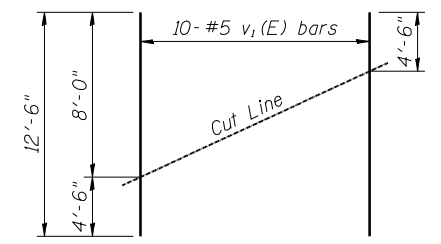
| Bar | No. | Size | Length | Shape |
|----------------------------------|-----|------|---------|-------|
| h(E) | 16 | #5 | 4'-9" | — |
| h ₁ (E) | 36 | #5 | 8'-9" | — |
| h ₂ (E) | 2 | #5 | 28'-6" | — |
| h ₃ (E) | 2 | #5 | 32'-6" | — |
| v ₁ (E) | 20 | #5 | 12'-6" | — |
| v ₂ (E) | 84 | #5 | 2'-5" | Γ |
| Structure Excavation | | | Cu. Yd. | 87 |
| Concrete Structures | | | Cu. Yd. | 6.8 |
| Bar Splicers | | | Each | 2 |
| Reinforcement Bars, Epoxy Coated | | | Pound | 1010 |

For details of Bar Splicers, see sheet 30 of 31.

NOTE
Plan elevations relative to the existing structure have been taken from existing plans and reduced by 0.44 feet to match benchmark datum.



ANCHOR BOLT LAYOUT DETAIL



FIELD CUTTING DIAGRAM

Order v₁(E) bars full length. Cut as shown and use remainder of bars in opposite face.



JOB = 2276.3
FILE = 0540057_0058-SN0057Abuts.dgn
DATE = 2/11/2013

DESIGNED - AAN
CHECKED - MDC
DRAWN - SJS
CHECKED - MDC

REVISED -
REVISED -
REVISED -
REVISED -

**STATE OF ILLINOIS
DEPARTMENT OF TRANSPORTATION**

**EAST ABUTMENT
STRUCTURE NO. 054-0057 (NB)**

SHEET NO. 23 OF 31 SHEETS

| F.A.I. RTE. | SECTION | COUNTY | TOTAL SHEETS | SHEET NO. |
|-------------|-----------------------|--------|--------------|--------------------|
| 55 | D6 LOGAN CO BR 2011-1 | LOGAN | 429 | 222 |
| | | | | CONTRACT NO. 72E11 |

ILLINOIS FED. AID PROJECT