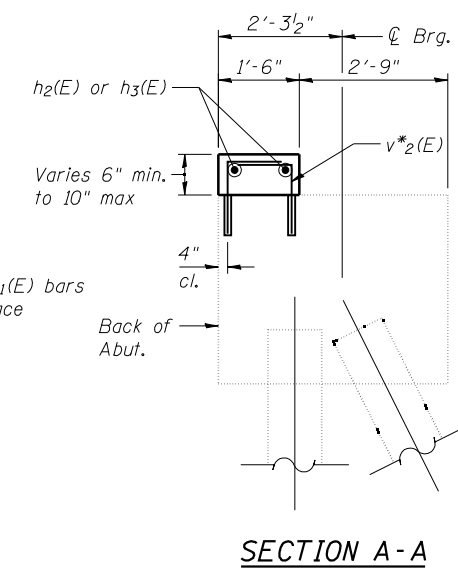
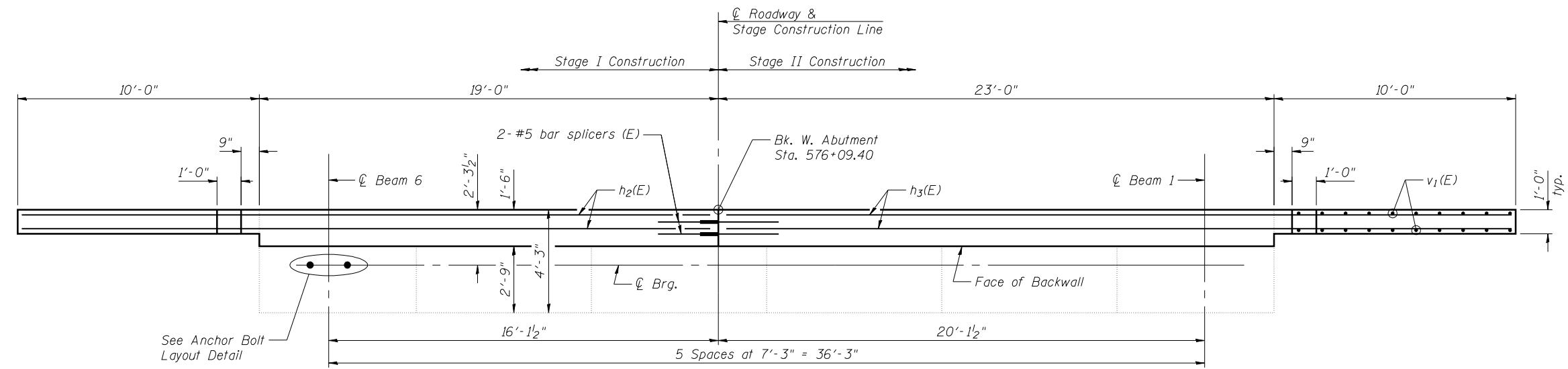


MINIMUM BAR LAP
#5 bar = 3'-3"

ELEVATION
(Looking West)



* Denotes bar to be epoxy grouted in accordance with Section 584 of the Standard Specifications. Minimum embedment = 9". Cost included with Concrete Structures.



PLAN - WEST ABUTMENT SB

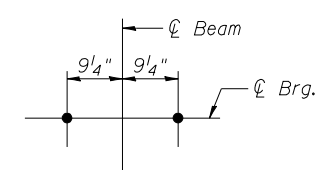
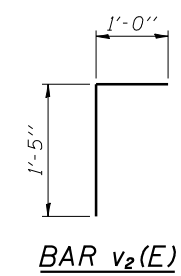
LEGEND
[Hatched Box] Denotes Structural Repair of Concrete (Depth Equal to or Less Than 5")

**WEST ABUTMENT SB
BILL OF MATERIAL**

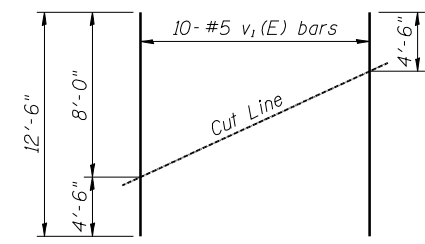
Bar	No.	Size	Length	Shape
h(E)	16	#5	4'-9"	—
h1(E)	36	#5	8'-9"	—
h2(E)	2	#5	28'-6"	—
h3(E)	2	#5	32'-6"	—
v1(E)	20	#5	12'-6"	—
v2(E)	84	#5	2'-5"	Γ
Structure Excavation			Cu. Yd.	87
Concrete Structures			Cu. Yd.	6.8
Bar Splicers			Each	2
Reinforcement Bars, Epoxy Coated			Pound	1010
Structural Repair of Concrete (Depth Equal to or Less Than 5")			Sq. Ft.	1

For details of Bar Splicers, see sheet 30 of 31.

NOTE
Plan elevations relative to the existing structure have been taken from existing plans and reduced by 0.44 feet to match benchmark datum.



ANCHOR BOLT LAYOUT DETAIL



FIELD CUTTING DIAGRAM

Order v1(E) bars full length. Cut as shown and use remainder of bars in opposite face.



JOB = 2276.3
FILE = 0540057_0058-SN0058Abuts.dgn
DATE = 2/11/2013

DESIGNED - AAN	REVISED -
CHECKED - MDC	REVISED -
DRAWN - SJS	REVISED -
CHECKED - MDC	REVISED -

**STATE OF ILLINOIS
DEPARTMENT OF TRANSPORTATION**

**WEST ABUTMENT
STRUCTURE NO. 054-0058 (SB)**

SHEET NO. 24 OF 31 SHEETS

F.A.I. RTE.	SECTION	COUNTY	TOTAL SHEETS	SHEET NO.
55	D6 LOGAN CO BR 2011-1	LOGAN	429	223
CONTRACT NO. 72E11				

ILLINOIS FED. AID PROJECT