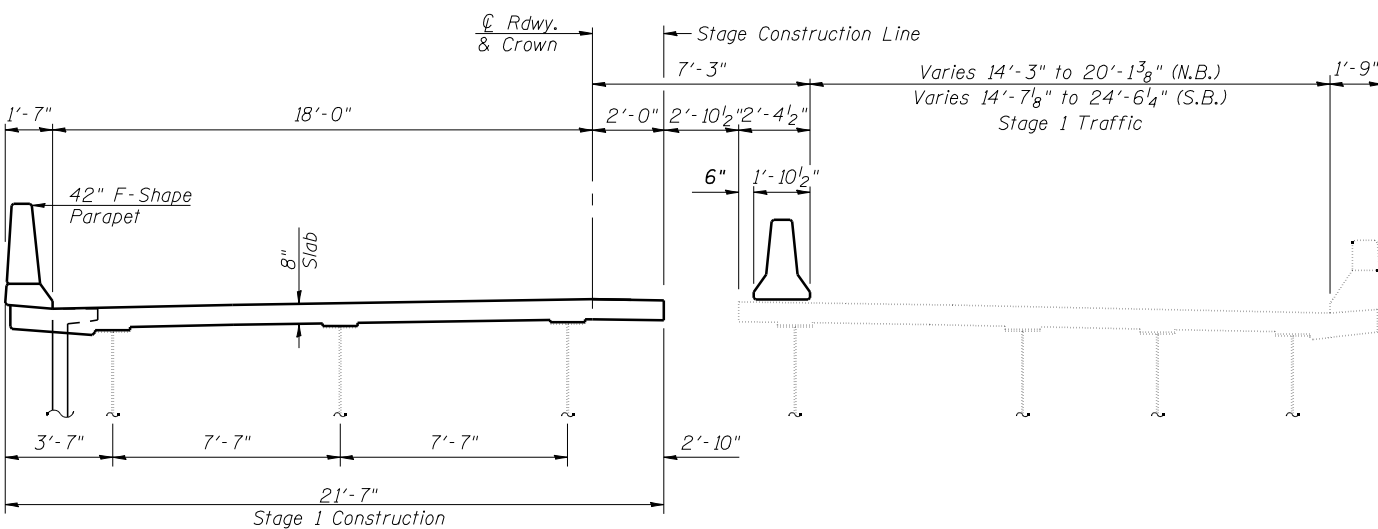
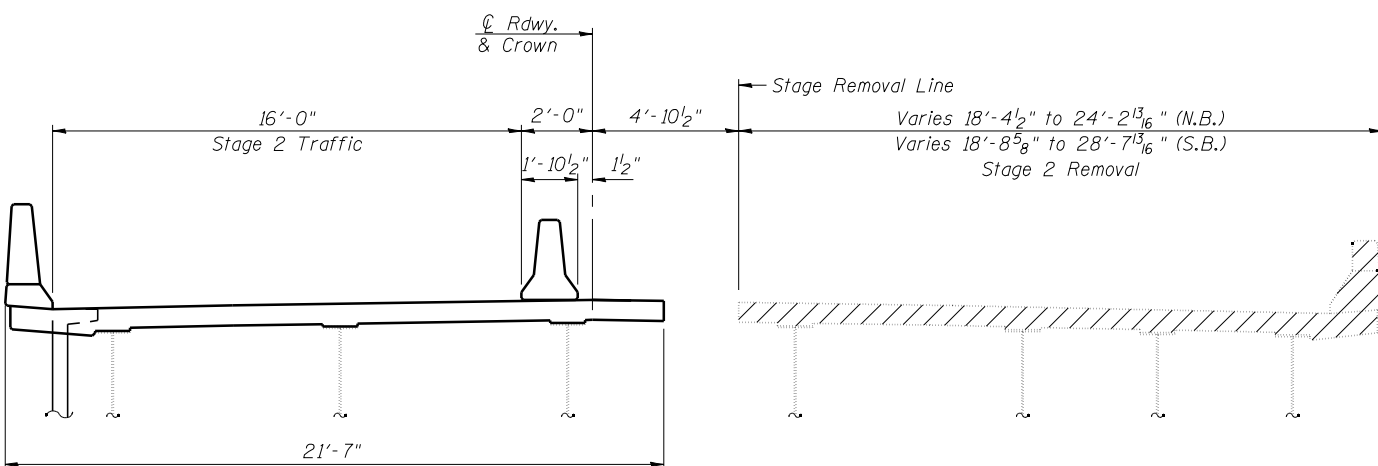


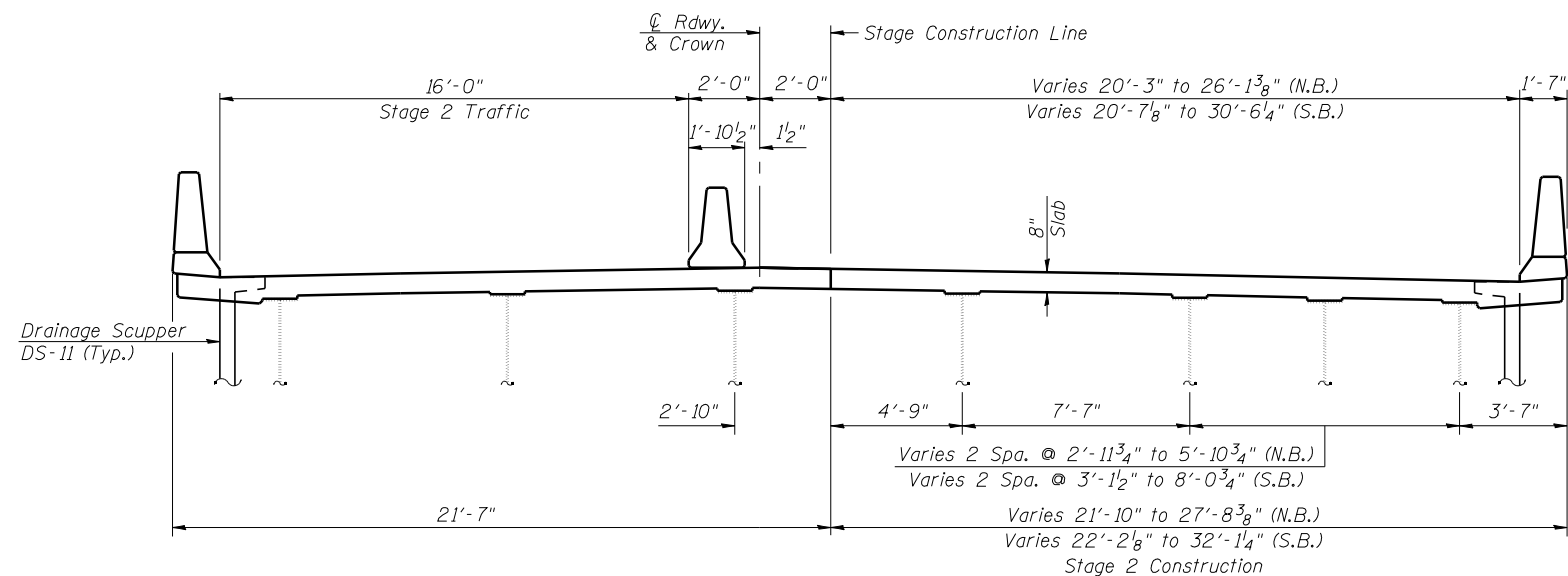
**STAGE 1 REMOVAL**



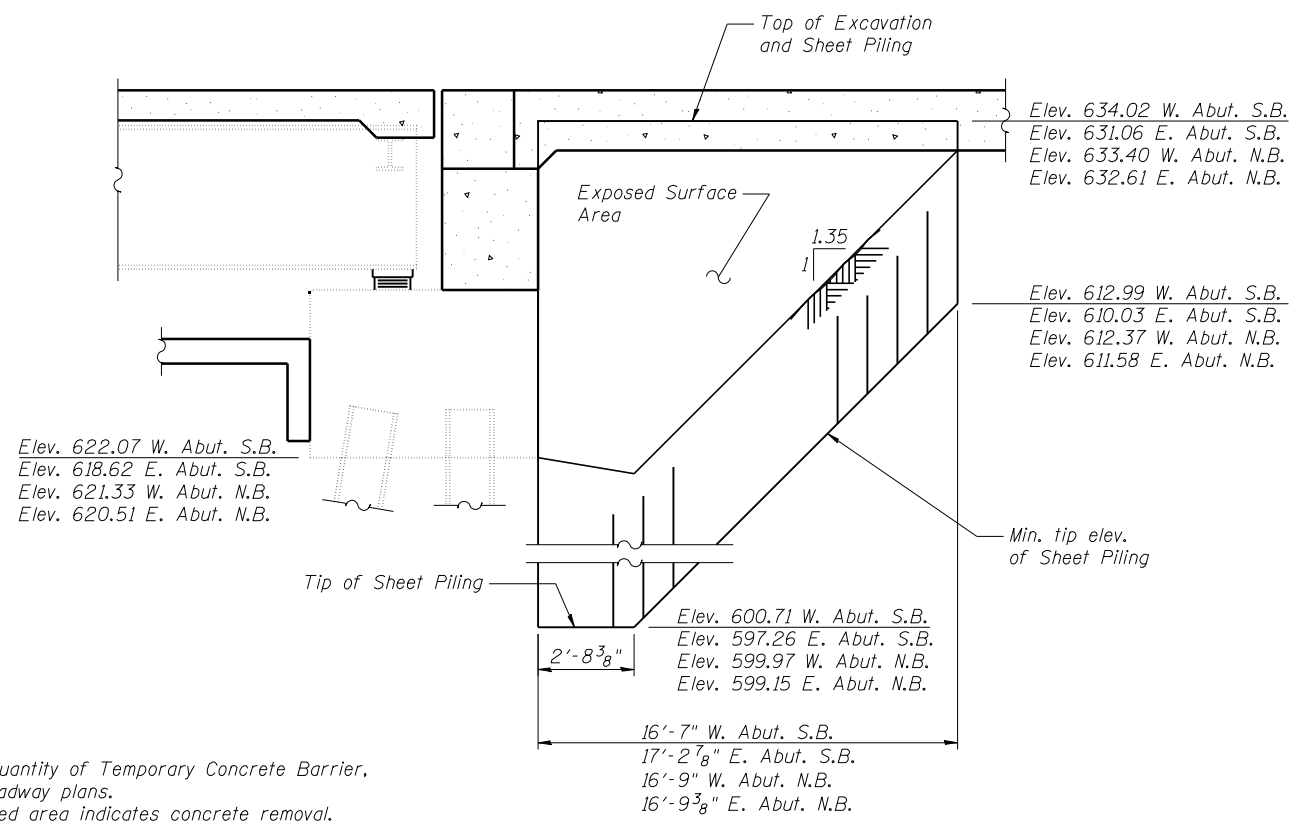
**STAGE 1 CONSTRUCTION**



**STAGE 2 REMOVAL**



**STAGE 2 CONSTRUCTION**



**TEMPORARY SHEET PILING**

(West Abutments shown, East Abutments similar)  
 Minimum Section Modulus = 31.9 in<sup>3</sup>/ft

**Notes:**  
 For quantity of Temporary Concrete Barrier, see roadway plans.  
 Hatched area indicates concrete removal.  
 If the Contractor chooses to alter the temporary cantilevered sheet piling design requirements shown on the plans, a design submittal including plan details and calculations will be required for review and acceptance by the Engineer.  
 All cross sections are looking in the direction of traffic.  
 Temporary Sheet Piling was designed with the following assumptions:  
 $q_u = 0.8 \text{ tsf}$   
 $N = 8$

**NOTE**

Plan elevations relative to the existing structure have been taken from existing plans and reduced by 0.38 feet to match benchmark datum.



JOB	= 2265.2	DESIGNED	- AAN	REVISED	-
FILE	= 0540060_0061-72E11-03-Staging.dgn	CHECKED	- MDC	REVISED	-
DATE	= 3/18/2013	DRAWN	- SJS	REVISED	-
SCALE	= 64.0000' / IN.	CHECKED	- MDC	REVISED	-

**STATE OF ILLINOIS  
 DEPARTMENT OF TRANSPORTATION**

**STAGE CONSTRUCTION DETAILS  
 STRUCTURE NO. 054-0060 (SB) & STRUCTURE NO. 054-0061 (NB)**

SHEET NO. 3 OF 53 SHEETS

F.A.I. RTE.	SECTION	COUNTY	TOTAL SHEETS	SHEET NO.
55	D6 LOGAN CO BR 2011-1	LOGAN	429	233
CONTRACT NO. 72E11			ILLINOIS FED. AID PROJECT	