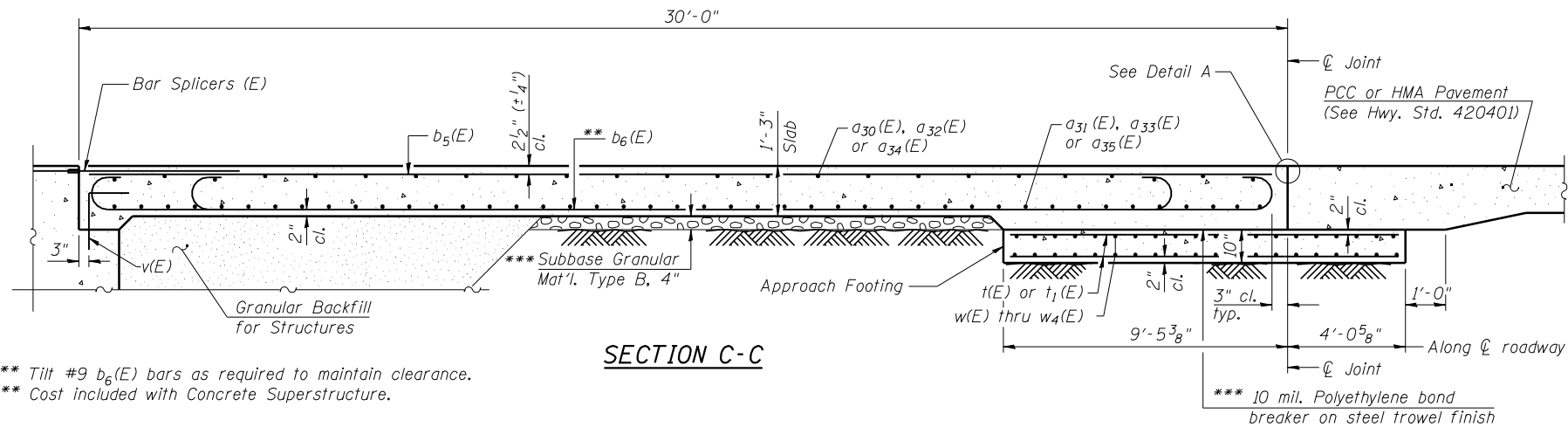
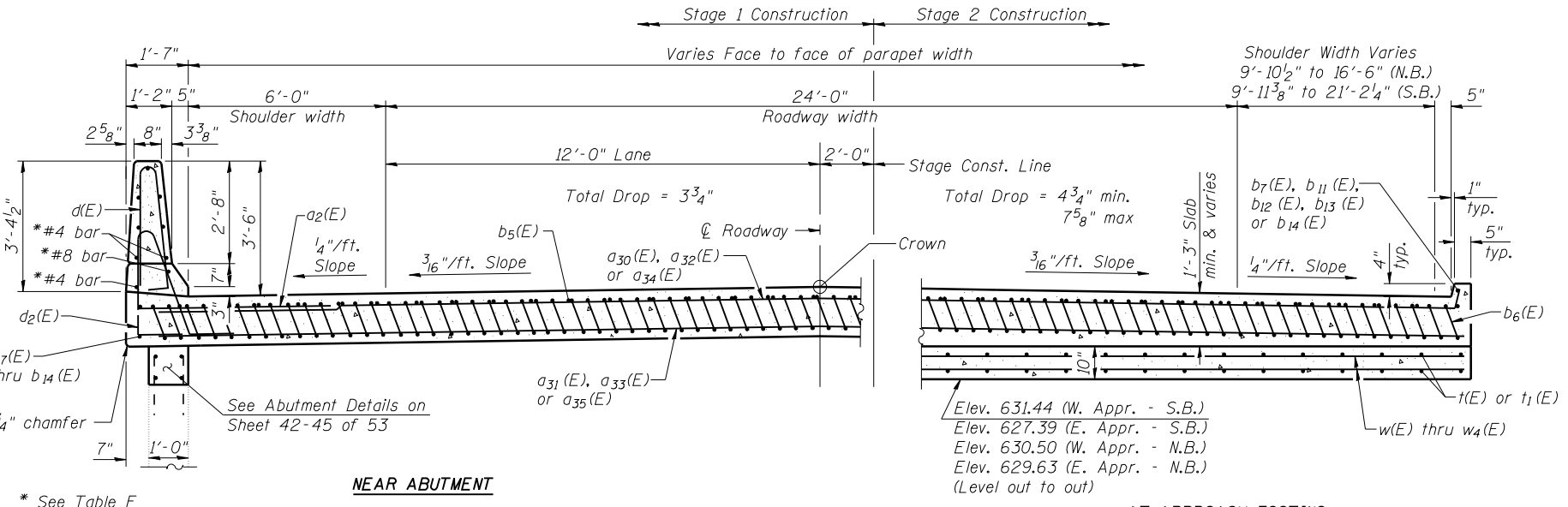


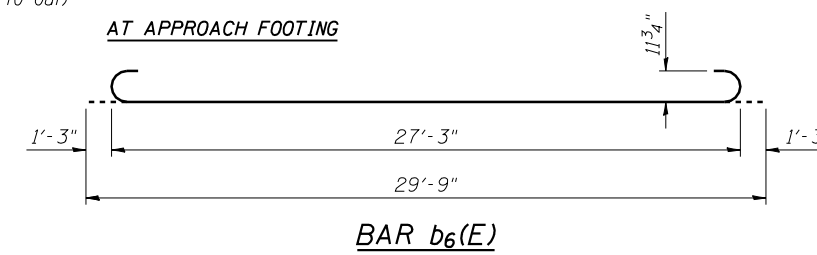
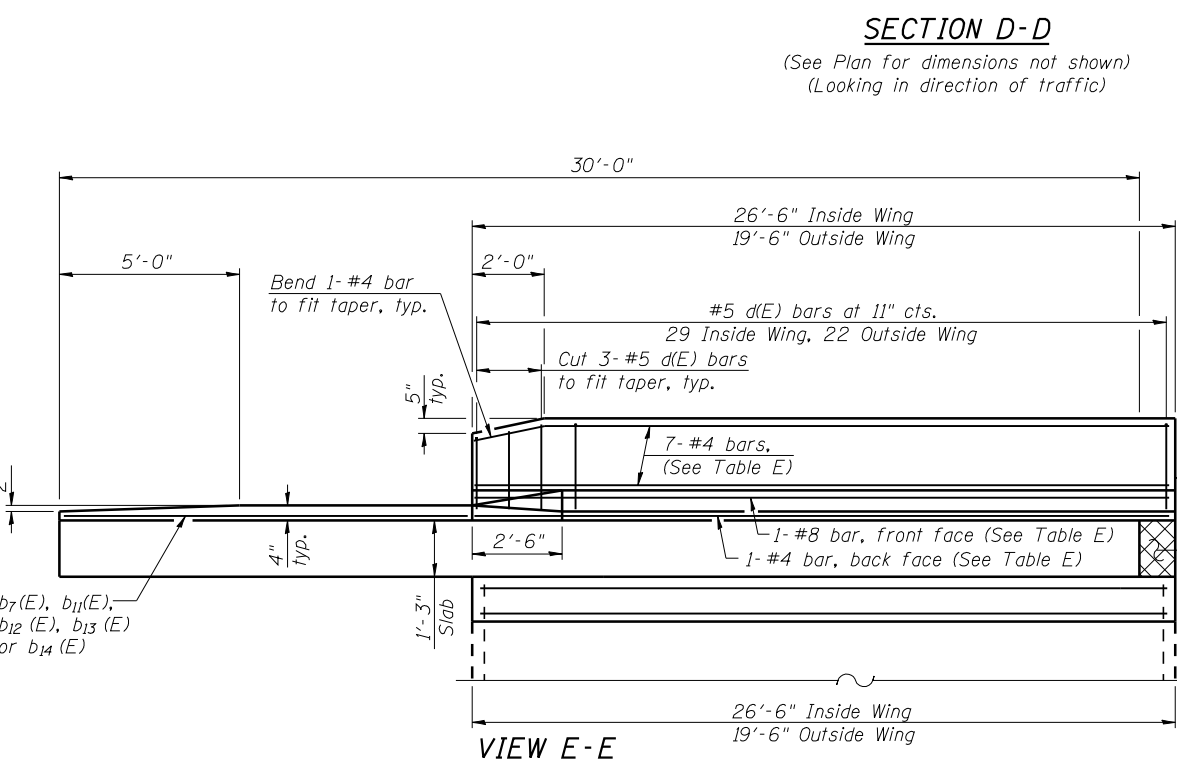
Notes: Approach slab and parapet concrete shall be paid for as Concrete Superstructure. Approach footing concrete shall be paid for as Concrete Structures. Reinforcement shall be paid for as Reinforcement Bars, Epoxy Coated. For v(E) bar details, see sheet 46 of 53. The approach footing maximum applied service bearing pressure (Qmax) = 2.0 ksf. For bar splicer details, see sheet 52 of 53. Cost of excavation for approach footing included with Concrete Structures. For Granular Backfill for Structures and drainage treatment details, see sheet 2 of 53. For additional parapet details, see sheet 20 of 53. The joint opening shall be determined per Article 520.04 except that on jointless structures, the distance described as the bridge length between the nearest fixed bearings each way from the joint shall be taken as half the bridge length plus the approach slab length. The minimum dimension shall be 1 1/2" for installation purposes.



\*\* Tilt #9 b<sub>6</sub>(E) bars as required to maintain clearance.  
 \*\*\* Cost included with Concrete Superstructure.



\* See Table E



**TABLE E**

Location	Inside Parapet Bars	Outside Parapet Bars
West Appr. S.B.	e22, e23	e20, e21
East Appr. S.B.	e26, e27	e24, e25
West Appr. N.B.	e28, e29	e30, e31
East Appr. N.B.	e26, e27	e24, e25

Hatched area to be poured after superstructure forms have been removed. Quantity of concrete included with Concrete Superstructure on Sheet 20 of 53.

