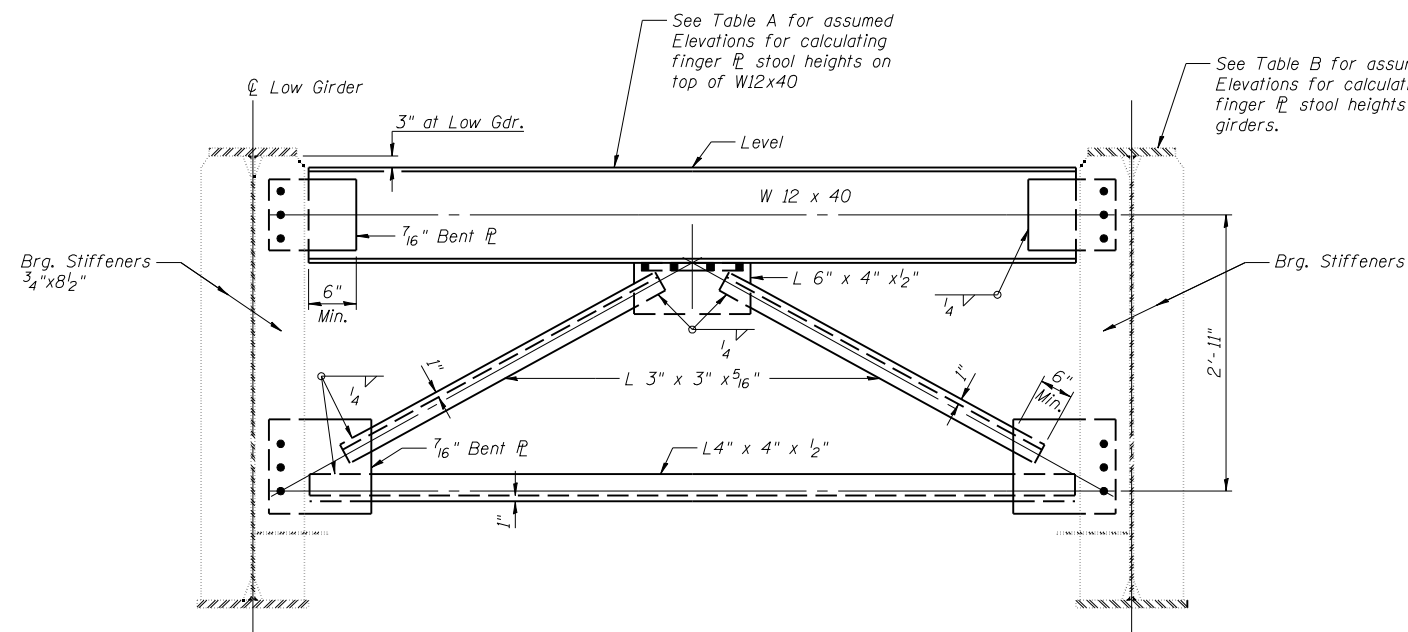


END DIAPHRAGM

Note: Use above detail with top W12x40 only.
Install lower portion of cross frame after Stage 2.

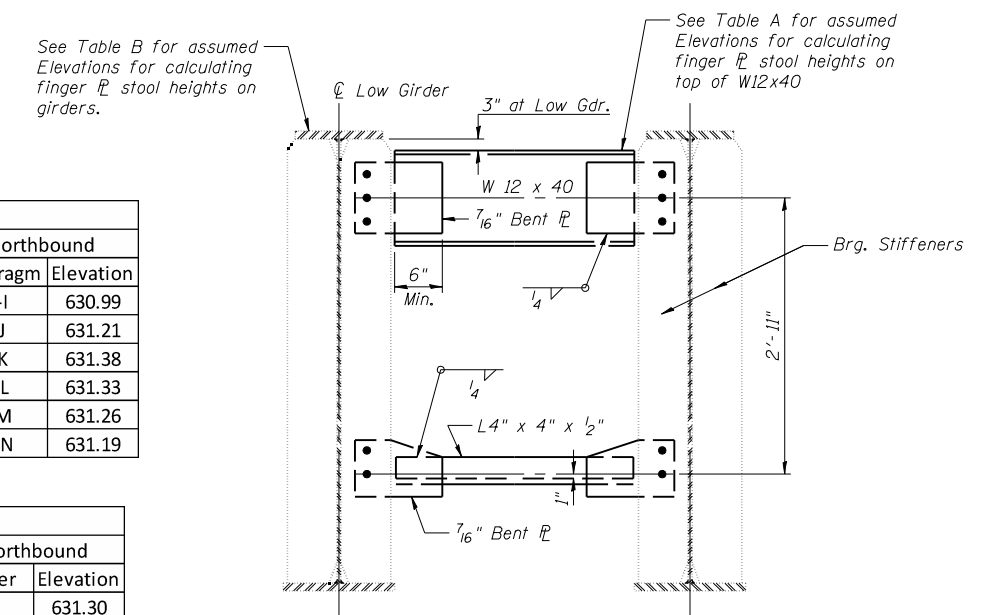
END DIAPHRAGM STAGE CONSTRUCTION SEQUENCE

- 1.) Order diaphragm in two sections.
- 2.) Attach section ① of diaphragm to girder.
- 3.) Place timber block posts between section ① of diaphragm and abutment bearing section.
- 4.) Attach section ② of diaphragm to both girder and section ① of diaphragm during stage II construction with splice plates.
- 5.) Remove timber block posts.



END CROSS FRAME F

No. Required = 20 Ea.
Bolts 3/4" φ
Open Holes 1 3/16" φ
1 5/16" φ holes in gusset PL for 3/4" φ bolts



END CROSS FRAME F₂

No. Required = 4 Ea.
Bolts 3/4" φ
Open Holes 1 3/16" φ

Table A			
Southbound		Northbound	
Diaphragm	Elevation	Diaphragm	Elevation
A-B	629.09	H-I	630.99
B-C	629.38	I-J	631.21
C-D	629.66	J-K	631.38
D-E	629.90	K-L	631.33
E-F	630.08	L-M	631.26
F-G	630.04	M-N	631.19

Table B			
Southbound		Northbound	
Girder	Elevation	Girder	Elevation
A	629.40	H	631.30
B	629.69	I	631.51
C	629.97	J	631.71
D	630.21	K	631.69
E	630.40	L	631.64
F	630.39	M	631.57
G	630.35	N	631.50

Note: Finger PL stool heights listed on sheets 30 and 31 shall be adjusted if above elevations do not match actual elevations measured in the field.