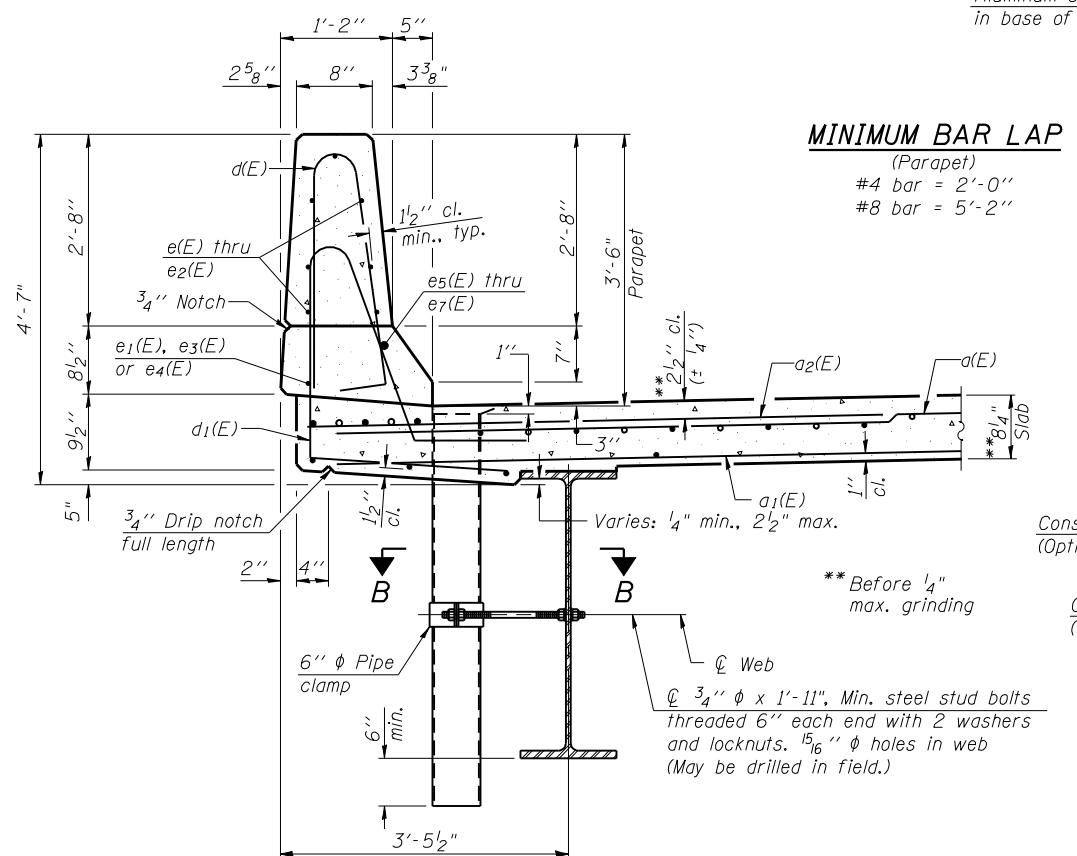
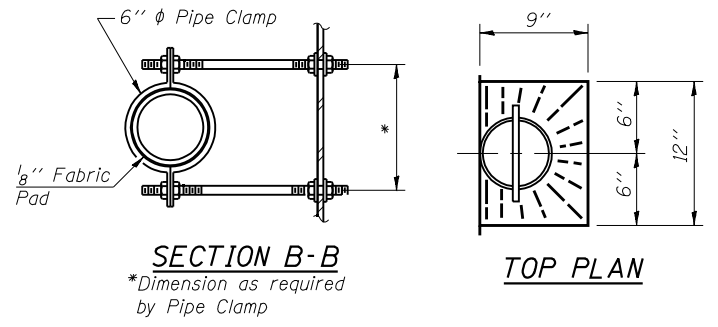


**INSIDE ELEVATION OF PARAPET**



**SECTION THRU PARAPET, SEC. A-A**

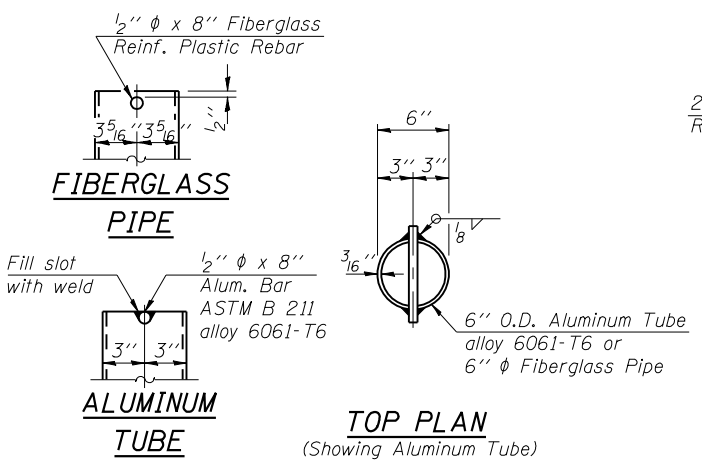
Showing floor drains, see Sec. A-A on Sheet 19 of 38 for Section showing Drainage Scupper.



**SECTION B-B**

\*Dimension as required by Pipe Clamp

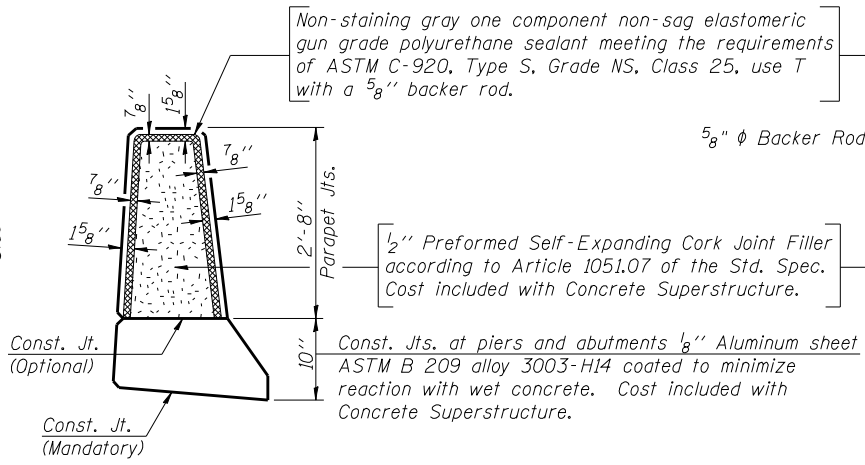
**TOP PLAN**



**FIBERGLASS PIPE**

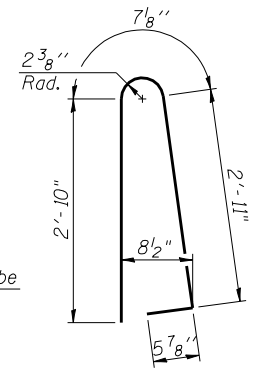
**ALUMINUM TUBE**

**TOP PLAN (Showing Aluminum Tube)**

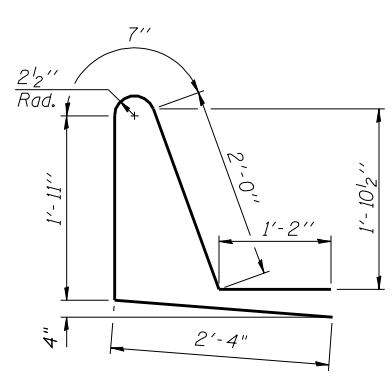


**PARAPET JOINT DETAILS**

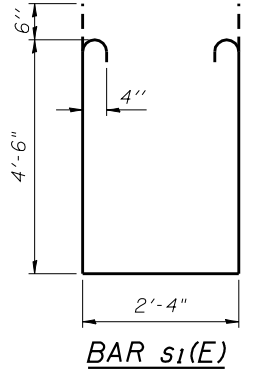
Notes:  
The exterior surfaces of the floor drains shall be painted with the finish coat as specified in the special provisions for Cleaning and Painting New Metal Structures. The exterior surfaces of the drains shall be cleaned according to Society of Protective Coatings Spec. SSPC-SP1 prior to painting.  
Fiberglass pipe shall conform to ASTM D 2996, with short-time rupture strength hoop tensile stress of 30,000 p.s.i. minimum.  
Galvanize clamping device according to AASHTO M232. Cost of clamping device and inserts is included with Floor Drains.



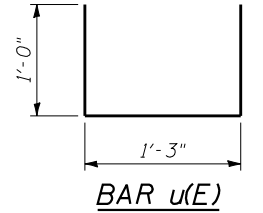
**BAR d(E)**



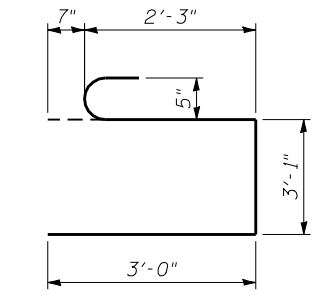
**BAR d1(E)**



**BAR v(E)**



**BAR u(E)**



**BAR s(E)**

**BILL OF MATERIAL TWO SUPERSTRUCTURES**

Bar	No.	Size	Length	Shape
a(E)	1008	#5	19'-1"	—
a1(E)	756	#5	18'-6"	—
a2(E)	1008	#6	6'-6"	—
a3(E)	1008	#5	23'-1"	—
a4(E)	756	#5	22'-6"	—
a5(E)	8	#5	20'-7"	—
a6(E)	8	#5	24'-10"	—
a11(E)	64	#5	1'-6"	—
b(E)	1012	#5	31'-0"	—
b1(E)	516	#6	24'-9"	—
b2(E)	840	#5	33'-9"	—
d(E)	1376	#5	6'-10"	U
d1(E)	1376	#5	8'-0"	U
e(E)	224	#4	19'-4"	—
e1(E)	128	#4	17'-8"	—
e2(E)	140	#4	16'-8"	—
e3(E)	24	#4	27'-2"	—
e4(E)	12	#4	29'-7"	—
e5(E)	24	#8	29'-3"	—
e6(E)	16	#8	17'-8"	—
e7(E)	12	#8	31'-7"	—
m(E)	40	#6	24'-11"	—
m1(E)	24	#6	10'-9'	—
m2(E)	40	#6	7'-5"	—
m3(E)	16	#6	3'-3"	—
m4(E)	40	#6	20'-6"	—
m5(E)	24	#6	9'-3"	—
s(E)	184	#5	8'-11"	S
s1(E)	164	#4	12'-4"	S
u(E)	188	#5	3'-3"	U
v(E)	176	#5	3'-9"	V
Reinforcement Bars, Epoxy Coated		Pound	208,330	
Concrete Superstructure		Cu. Yds.	1009.0	

Bars indicated thus 3 x 11 - #5 etc. indicates 3 lines of bars with 11 lengths per line.

S-I-D

1-27-12

FILE NAME =	USER NAME = .MML.	DESIGNED - RKM	REVISED -
... \0540063-0064-72e11-018-superstructure details.dgn		CHECKED - MCB	REVISED -
		DRAWN - CFC	REVISED -
		CHECKED - RKM	REVISED -
PLOT SCALE = 0:2.000000 '1' / IN.			
PLOT DATE = 3/18/2013			

**STATE OF ILLINOIS  
DEPARTMENT OF TRANSPORTATION**

**SUPERSTRUCTURE DETAILS  
STRUCTURE NO. 054-0063 (N.B.) & 054-0064 (S.B.)**

SHEET NO. 18 OF 38 SHEETS

**CB Coombe-Bloxdorf P.C.**  
- CIVIL ENGINEERS -  
- STRUCTURAL ENGINEERS -  
- LAND SURVEYORS -  
Design Firm License No. 184-002703

F.A.I. RTE.	SECTION	COUNTY	TOTAL SHEETS	SHEET NO.
55	D6 LOGAN CO BR 2011-1	LOGAN	429	303

CONTRACT NO. 72E11  
ILLINOIS FED. AID PROJECT