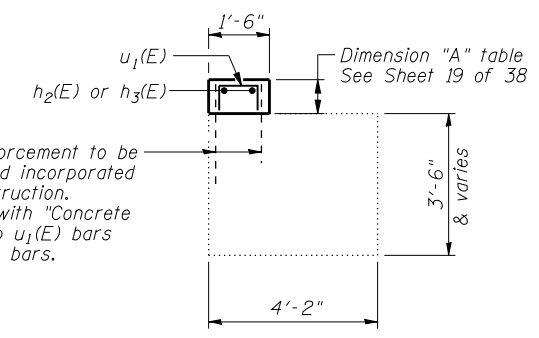
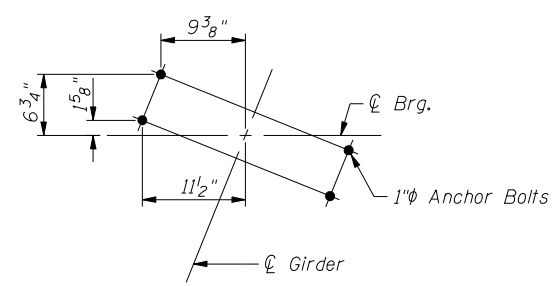
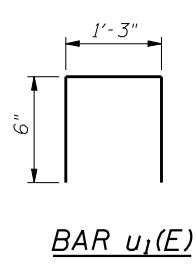
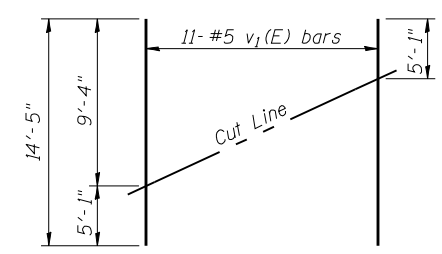
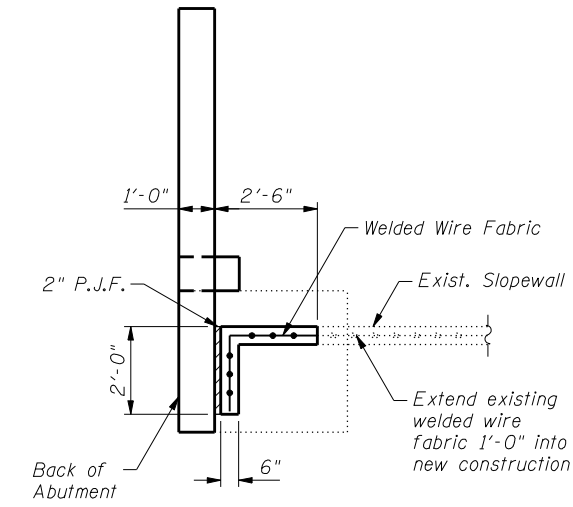
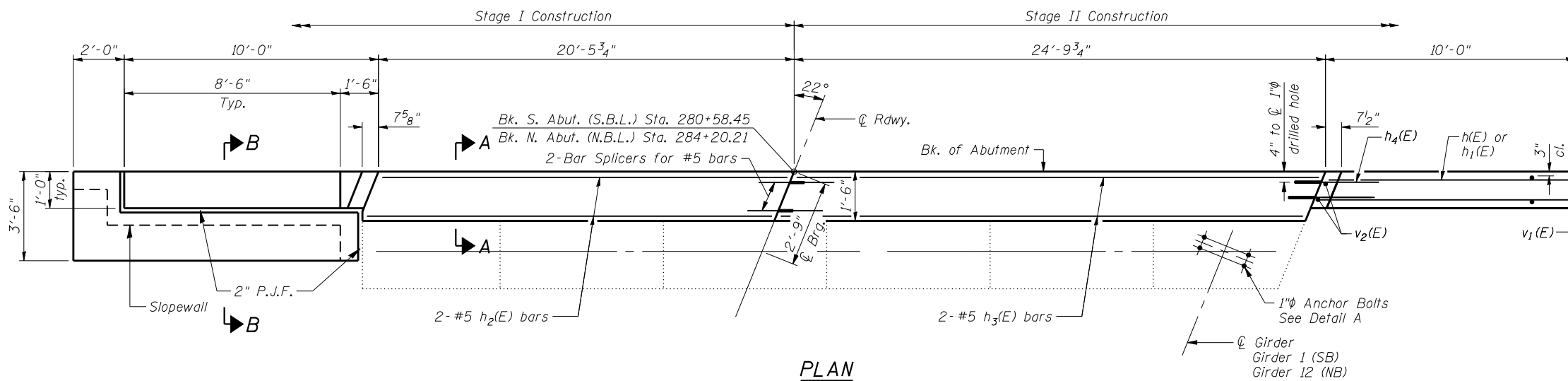
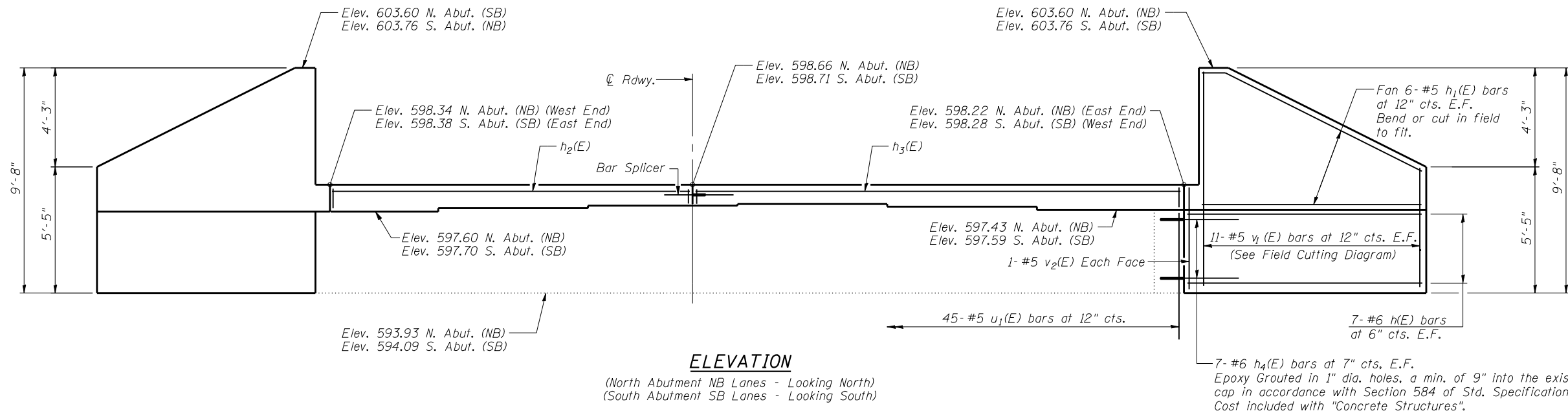


**BILL OF MATERIAL  
TWO ABUTMENTS**

Bar	No.	Size	Length	Shape
h(E)	56	#6	9'-6"	—
h <sub>1</sub> (E)	48	#5	10'-0"	—
h <sub>2</sub> (E)	4	#5	20'-0"	—
h <sub>3</sub> (E)	4	#5	24'-5"	—
h <sub>4</sub> (E)	56	#6	5'-9"	—
u <sub>1</sub> (E)	90	#5	2'-3"	□
v <sub>1</sub> (E)	44	#5	14'-5"	—
v <sub>2</sub> (E)	8	#5	4'-4"	—
Structure Excavation		Cu. Yd.	242	
Concrete Structures		Cu. Yd.	15.4	
Reinforcement Bars, Epoxy Coated		Pound	2880	

Notes:  
Sloped wall shall be reinforced with welded wire fabric, 6 in. x 6 in. - W4.0xW4.0, weighing 58 lbs. per 100 sq. ft.  
See sheet 34 & 35 of 38 for quantity of Sloped wall.



Existing Reinforcement to be cut in field and incorporated into new construction. Cost included with "Concrete Removal". Lap u<sub>1</sub>(E) bars with existing v bars.

**MIN. LAP**  
#6 bar = 4'-5"

**CB** Coombe-Bloxdorf P.C.  
- CIVIL ENGINEERS -  
- STRUCTURAL ENGINEERS -  
- LAND SURVEYORS -  
Design Firm License No. 184-002703