

WEST EDGE OF SHOULDER

| Location | Station | Offset | Theoretical Grade Elevations | Theoretical Grade Elevations Adjusted For Grinding |
|--------------------|----------|--------|------------------------------|--|
| S. End S. Approach | 45612.08 | -18.00 | 709.44 | 709.46 |
| A | 45621.97 | -18.00 | 709.66 | 709.68 |
| B | 45631.86 | -18.00 | 709.88 | 709.90 |
| N. End S. Approach | 45641.74 | -18.00 | 710.10 | 710.12 |

WEST EDGE OF PAVEMENT & PROFILE GRADE

| Location | Station | Offset | Theoretical Grade Elevations | Theoretical Grade Elevations Adjusted For Grinding |
|--------------------|----------|--------|------------------------------|--|
| S. End S. Approach | 45611.69 | -12.00 | 709.68 | 709.70 |
| A | 45621.56 | -12.00 | 709.91 | 709.93 |
| B | 45631.44 | -12.00 | 710.13 | 710.15 |
| N. End S. Approach | 45641.30 | -12.00 | 710.34 | 710.36 |

CL N.B. ROADWAY

| Location | Station | Offset | Theoretical Grade Elevations | Theoretical Grade Elevations Adjusted For Grinding |
|--------------------|----------|--------|------------------------------|--|
| S. End S. Approach | 45610.91 | 0.00 | 710.17 | 710.19 |
| A | 45620.75 | 0.00 | 710.39 | 710.41 |
| B | 45630.60 | 0.00 | 710.61 | 710.63 |
| N. End S. Approach | 45640.43 | 0.00 | 710.83 | 710.85 |

NB LOCAL TANGENT

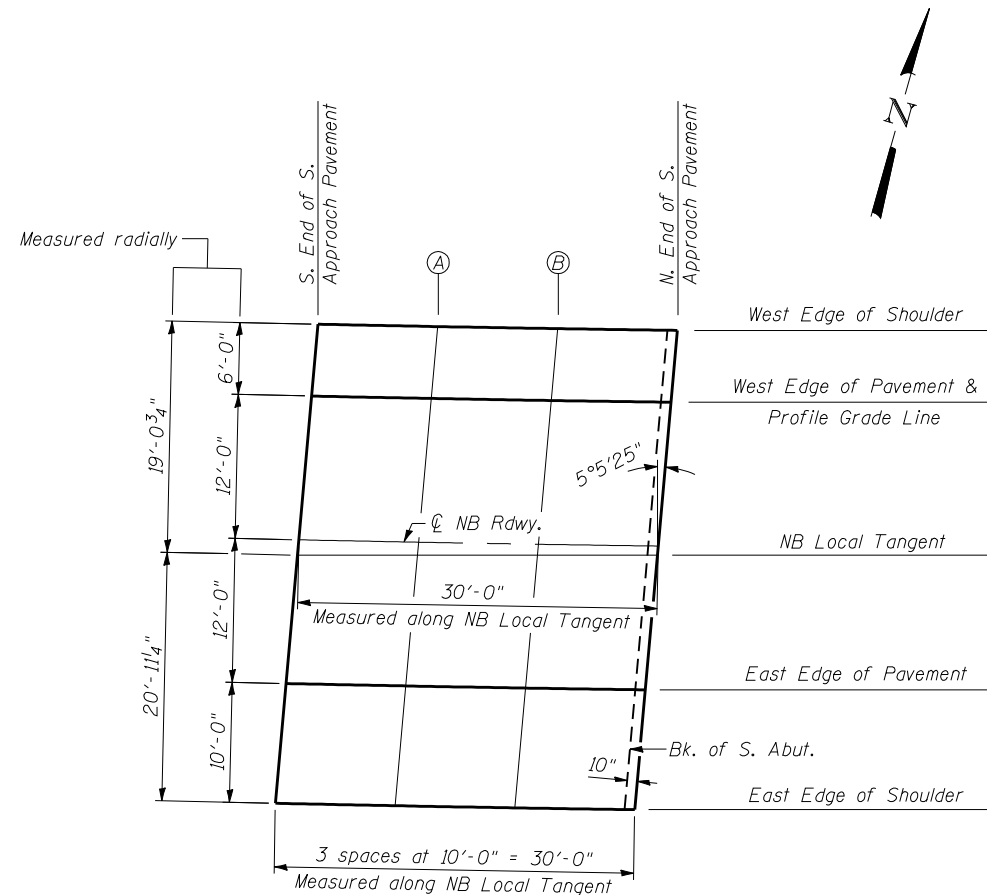
| Location | Station | Offset | Theoretical Grade Elevations | Theoretical Grade Elevations Adjusted For Grinding |
|--------------------|----------|--------|------------------------------|--|
| S. End S. Approach | 45610.84 | 1.06 | 710.21 | 710.23 |
| A | 45620.69 | 0.84 | 710.42 | 710.44 |
| B | 45630.54 | 0.64 | 710.64 | 710.66 |
| N. End S. Approach | 45640.39 | 0.47 | 710.85 | 710.87 |

EAST EDGE OF PAVEMENT

| Location | Station | Offset | Theoretical Grade Elevations | Theoretical Grade Elevations Adjusted For Grinding |
|--------------------|----------|--------|------------------------------|--|
| S. End S. Approach | 45610.13 | 12.00 | 710.66 | 710.68 |
| A | 45619.95 | 12.00 | 710.88 | 710.90 |
| B | 45629.76 | 12.00 | 711.10 | 711.12 |
| N. End S. Approach | 45639.56 | 12.00 | 711.31 | 711.33 |

EAST EDGE OF SHOULDER

| Location | Station | Offset | Theoretical Grade Elevations | Theoretical Grade Elevations Adjusted For Grinding |
|--------------------|----------|--------|------------------------------|--|
| S. End S. Approach | 45609.49 | 22.00 | 711.06 | 711.08 |
| A | 45619.28 | 22.00 | 711.28 | 711.30 |
| B | 45629.07 | 22.00 | 711.50 | 711.52 |
| N. End S. Approach | 45638.84 | 22.00 | 711.72 | 711.74 |



PLAN

E-AS1

7-1-10

| | | | |
|---|--------------------------|---------------|-----------|
| FILE NAME = | USER NAME = .MML. | DESIGNED - | REVISED - |
| ...\\0540065-0066-72e11-011-slab-elevations | approach-nb.dgn | CHECKED - | REVISED - |
| | PLOT SCALE = 16:0 "/ IN. | DRAWN - CFC | REVISED - |
| CB PROJECT NO 10065-1 | PLOT DATE = 3/18/2013 | CHECKED - GJB | REVISED - |

**STATE OF ILLINOIS
DEPARTMENT OF TRANSPORTATION**

**TOP OF S. APPROACH SLAB ELEVATIONS (N. B. STRUCTURE)
STRUCTURE NO. 054-0065 (N. B.) & 054-0066 (S. B.)**

SHEET NO. 11 OF 39 SHEETS

CB Coombe-Bloxdorf P.C.
- CIVIL ENGINEERS -
- STRUCTURAL ENGINEERS -
- LAND SURVEYORS -
Design Firm License No. 184-002703

| F.A.I. RTE. | SECTION | COUNTY | TOTAL SHEETS | SHEET NO. |
|-------------|-----------------------|--------|--------------|-----------|
| 55 | D6 LOGAN CO BR 2011-1 | LOGAN | 429 | 334 |

CONTRACT NO. 72E11
ILLINOIS FED. AID PROJECT