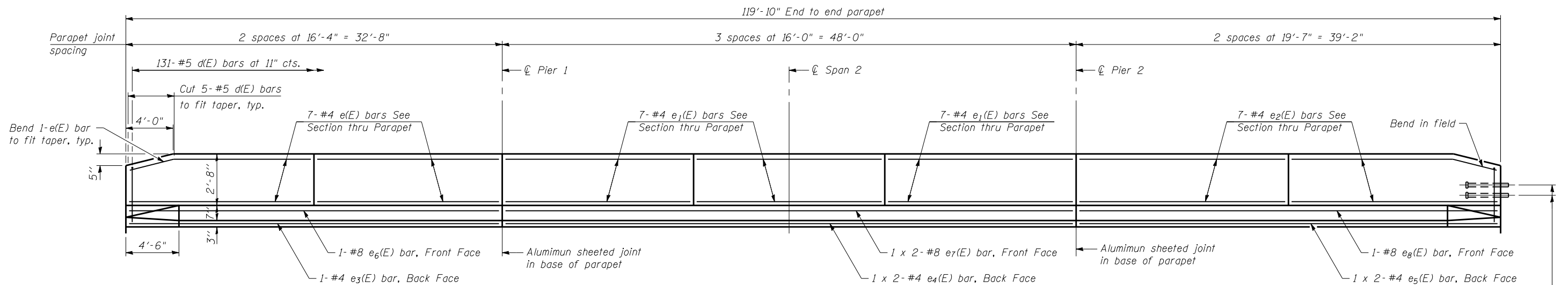


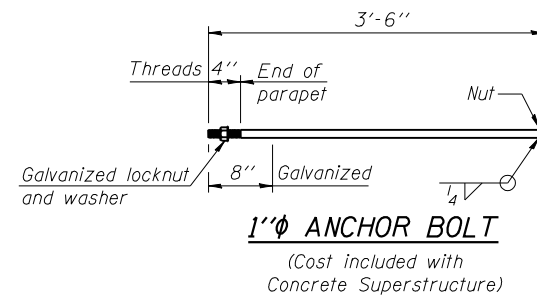
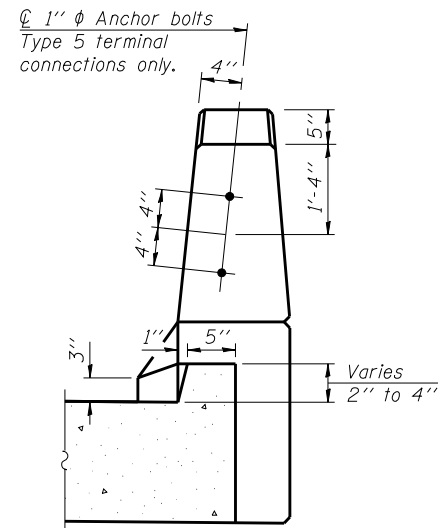
INSIDE ELEVATION OF SB WEST PARAPET

(East Parapet similar)



INSIDE ELEVATION OF NB WEST PARAPET

(East Parapet similar)



MINIMUM BAR LAP

(Parapet)
 #4 bar = 2'-0"
 #8 bar = 5'-2"

Bars indicated thus 1 x 2 - #4 etc. indicates 1 line of bars with 2 lengths per line.

FILE NAME =	USER NAME = .MML	DESIGNED - GJB	REVISED -
...\\0540065-0066-72e11-015-superstructure	details.dgn	CHECKED - MCB/RKM	REVISED -
	PLOT SCALE = 0:2.000000 '1' / IN.	DRAWN - CFC	REVISED -
CB PROJECT NO. 10065-1	PLOT DATE = 3/18/2013	CHECKED - MCB/GJB	REVISED -

**STATE OF ILLINOIS
 DEPARTMENT OF TRANSPORTATION**

**SUPERSTRUCTURE DETAILS
 STRUCTURE NO. 054-0065 (N.B.) & 054-0066 (S.B.)**

SHEET NO. 15 OF 39 SHEETS

CB Coombe-Bloxdorf P.C.
 - CIVIL ENGINEERS -
 - STRUCTURAL ENGINEERS -
 - LAND SURVEYORS -
 Design Firm License No. 184-002703

F.A.I. RTÉ.	SECTION	COUNTY	TOTAL SHEETS	SHEET NO.
55	D6 LOGAN CO BR 2011-1	LOGAN	429	338
				CONTRACT NO. 72E11

ILLINOIS FED. AID PROJECT