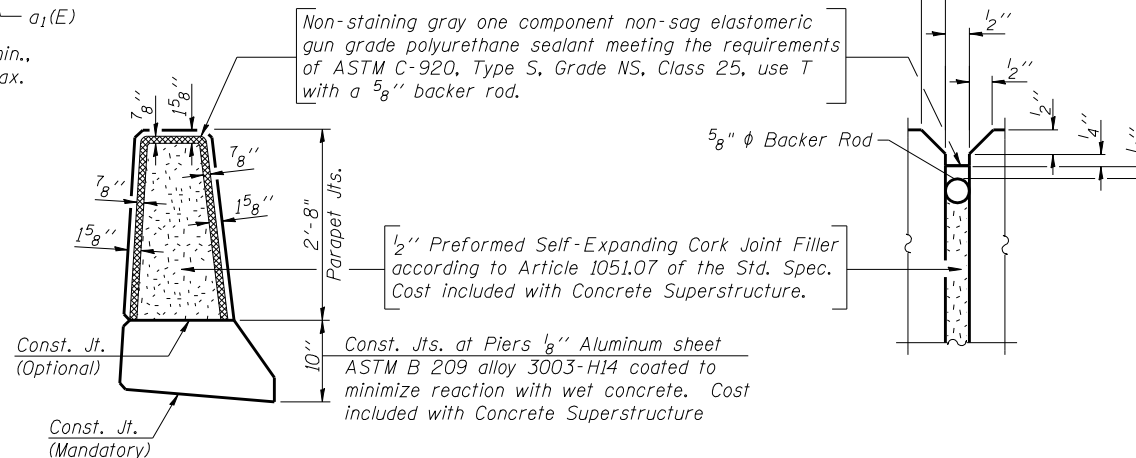
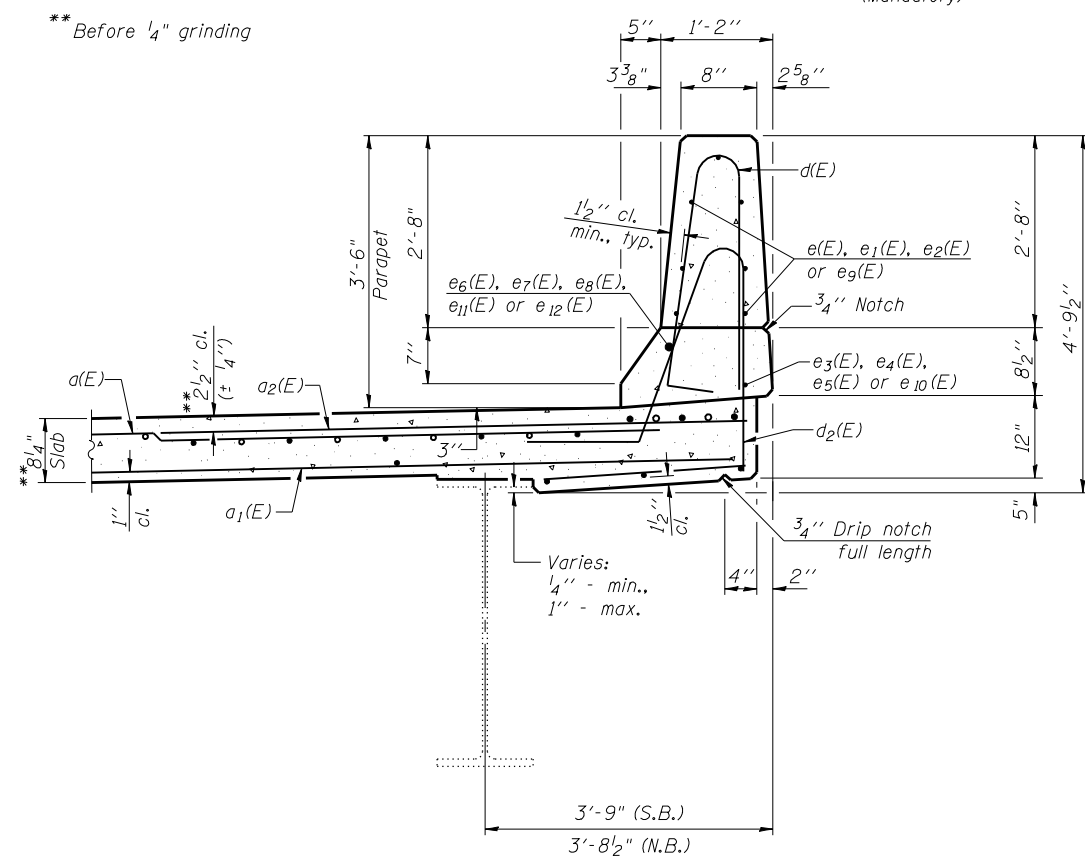


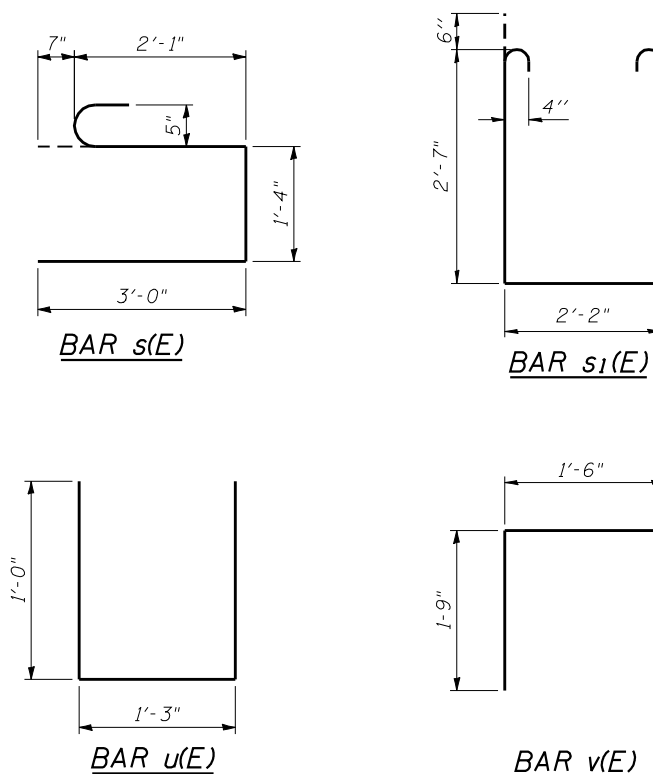
SECTION THRU WEST PARAPET



PARAPET JOINT DETAILS



SECTION THRU EAST PARAPET

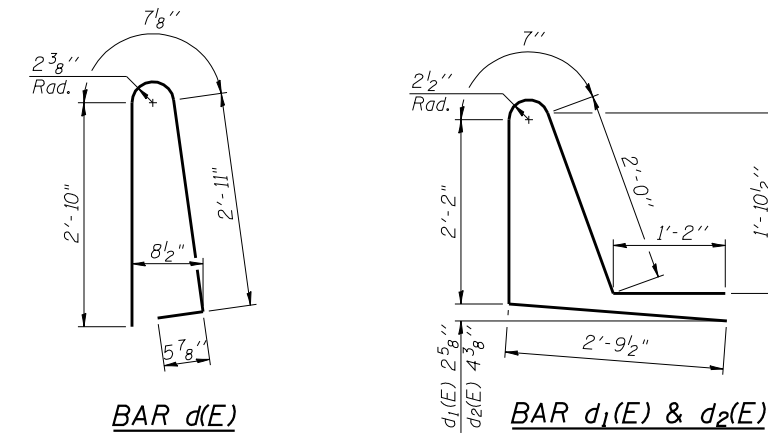


S.B. SUPERSTRUCTURE
BILL OF MATERIAL

Bar	No.	Size	Length	Shape
a(E)	215	#5	43'-0"	—
a1(E)	166	#5	42'-0"	—
a2(E)	216	#6	6'-6"	—
a3(E)	8	#5	23'-5"	—
b(E)	188	#5	31'-10"	—
b2(E)	230	#5	26'-0"	—
b4(E)	44	#6	25'-7"	—
b5(E)	44	#6	31'-4"	—
d(E)	254	#5	6'-10"	⌋
d1(E)	127	#5	8'-9"	⌋
d2(E)	127	#5	8'-9"	⌋
e(E)	42	#4	15'-9"	—
e1(E)	28	#4	15'-7"	—
e4(E)	4	#4	25'-2"	—
e5(E)	4	#4	20'-5"	—
e7(E)	4	#8	26'-9"	—
e9(E)	28	#4	17'-7"	—
e10(E)	2	#4	31'-7"	—
e11(E)	2	#8	31'-7"	—
e12(E)	2	#8	35'-8"	—
m(E)	40	#6	23'-4"	—
m1(E)	24	#6	10'-0"	—
m2(E)	20	#6	6'-11"	—
m3(E)	8	#6	3'-3"	—
s(E)	92	#5	7'-0"	⌋
s1(E)	82	#4	8'-4"	⌋
u(E)	88	#5	3'-3"	⌋
v(E)	88	#5	3'-3"	⌋
Reinforcement Bars, Epoxy Coated			Pound	45,190
Concrete Superstructure			Cu. Yds.	202.2

N.B. SUPERSTRUCTURE
BILL OF MATERIAL

Bar	No.	Size	Length	Shape
a(E)	221	#5	43'-0"	—
a1(E)	171	#5	42'-0"	—
a2(E)	222	#6	6'-6"	—
a3(E)	8	#5	23'-5"	—
b(E)	188	#5	31'-10"	—
b1(E)	44	#6	24'-6"	—
b2(E)	230	#5	26'-0"	—
b3(E)	44	#6	30'-8"	—
d(E)	262	#5	6'-10"	⌋
d1(E)	131	#5	8'-9"	⌋
d2(E)	131	#5	8'-9"	⌋
e(E)	28	#4	15'-9"	—
e1(E)	42	#4	15'-7"	—
e2(E)	28	#4	19'-3"	—
e3(E)	2	#4	32'-4"	—
e4(E)	4	#4	25'-2"	—
e5(E)	4	#4	20'-5"	—
e6(E)	2	#8	32'-4"	—
e7(E)	4	#8	26'-9"	—
e8(E)	2	#8	38'-10"	—
m(E)	40	#6	23'-4"	—
m1(E)	24	#6	10'-0"	—
m2(E)	20	#6	6'-11"	—
m3(E)	8	#6	3'-3"	—
s(E)	92	#5	7'-0"	⌋
s1(E)	82	#4	8'-4"	⌋
u(E)	88	#5	3'-3"	⌋
v(E)	88	#5	3'-3"	⌋
Reinforcement Bars, Epoxy Coated			Pound	45,810
Concrete Superstructure			Cu. Yds.	206.5



BAR d1(E) & d2(E)

FILE NAME =	USER NAME = .MML.	DESIGNED - GJB	REVISED -
...\\0540065-0065-72e11-016-superstructure	det-parapet.dgn	CHECKED - MCB/RKM	REVISED -
CB PROJECT NO. 10065-1	PLOT SCALE = 0:2.000000 '1' / IN.	DRAWN - CFC	REVISED -
	PLOT DATE = 3/18/2013	CHECKED - MCB/GJB	REVISED -

STATE OF ILLINOIS
DEPARTMENT OF TRANSPORTATION

SUPERSTRUCTURE DETAILS
STRUCTURE NO. 054-0065 (N.B.) & 054-0066 (S.B.)

SHEET NO. 16 OF 39 SHEETS

CB Coombe-Bloxdorf P.C.
- CIVIL ENGINEERS -
- STRUCTURAL ENGINEERS -
- LAND SURVEYORS -
Design Firm License No. 184-002703

F.A.I. RT.E.	SECTION	COUNTY	TOTAL SHEETS	SHEET NO.
55	D6 LOGAN CO BR 2011-1	LOGAN	429	339

CONTRACT NO. 72E11
ILLINOIS FED. AID PROJECT