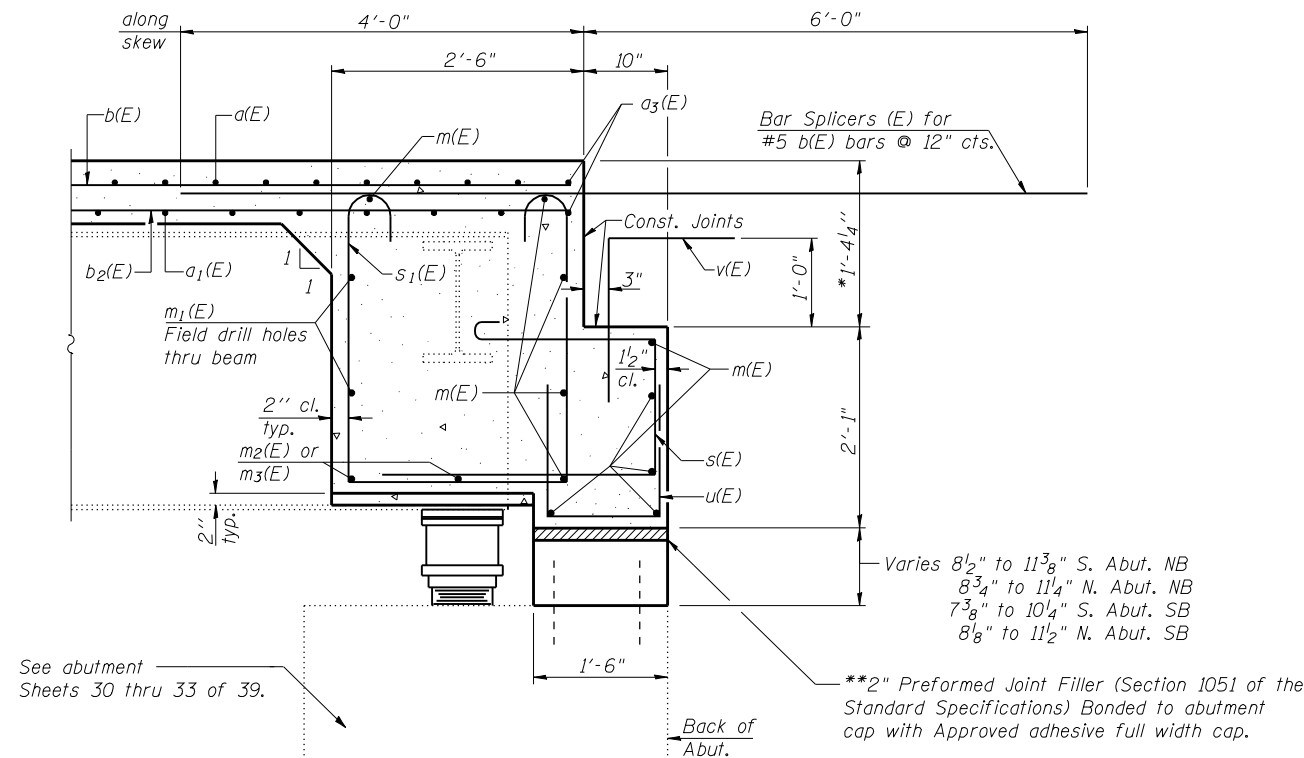


DIAPHRAGM ELEVATION AT ABUTMENT



SECTION A-A

Dimensions at right angles to abutment, except as shown.

Notes:
 Reinforcement bars in diaphragm are billed with superstructure on sheet 16 of 39.
 Concrete in diaphragm is included with Concrete Superstructure on sheet 16 of 39.
 Concrete in backwall is included with Concrete Structures on sheets 30 thru 33 of 39.
 For details of bars s(E), s₁(E), v(E), u(E), see sheet 16 of 39.
 The s(E) and s₁(E) bars shall be placed parallel to the beams. Spacing for these bars shall be at right angles to the beams.
 The cost of field drilling holes in webs for m₁(E) is included in the cost of Reinforcement Bars (Epoxy Coated).
 See Section A-A for bar locations.

MIN. BAR LAP
 #6 bar = 3'-4" (Diaphragm)

*Prior to grinding
 **Cost included with Concrete Superstructure.

FILE NAME =	USER NAME = .MML.	DESIGNED - GJB	REVISED -
...\\0540065-0066-72e11-017-diaphragm-detail	1s-sb.dgn	CHECKED - MCB/RKM	REVISED -
PLOT SCALE = 0:2.000000 '1' / IN.	DRAWN - CFC	REVISOR -	REVISED -
PLOT DATE = 3/18/2013	CHECKED - MCB/GJB	REVISOR -	REVISED -

**STATE OF ILLINOIS
 DEPARTMENT OF TRANSPORTATION**

**DIAPHRAGM DETAILS
 STRUCTURE NO. 054-0065 (N.B.) & 054-0066 (S.B.)**

SHEET NO. 17 OF 39 SHEETS

CB Coombe-Bloxdorf P.C.
 - CIVIL ENGINEERS -
 - STRUCTURAL ENGINEERS -
 - LAND SURVEYORS -
 Design Firm License No. 184-002703

F.A.I. RTE.	SECTION	COUNTY	TOTAL SHEETS	SHEET NO.
55	D6 LOGAN CO BR 2011-1	LOGAN	429	340
				CONTRACT NO. 72E11

ILLINOIS FED. AID PROJECT