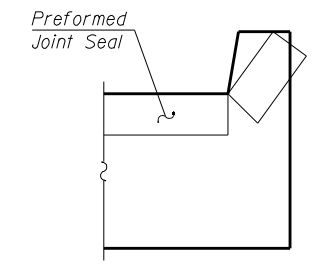
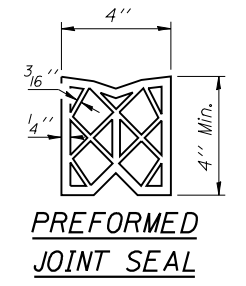
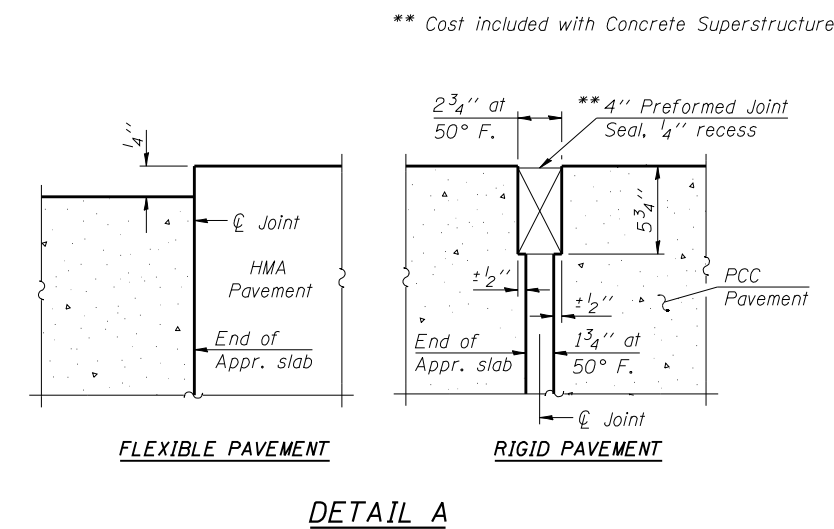
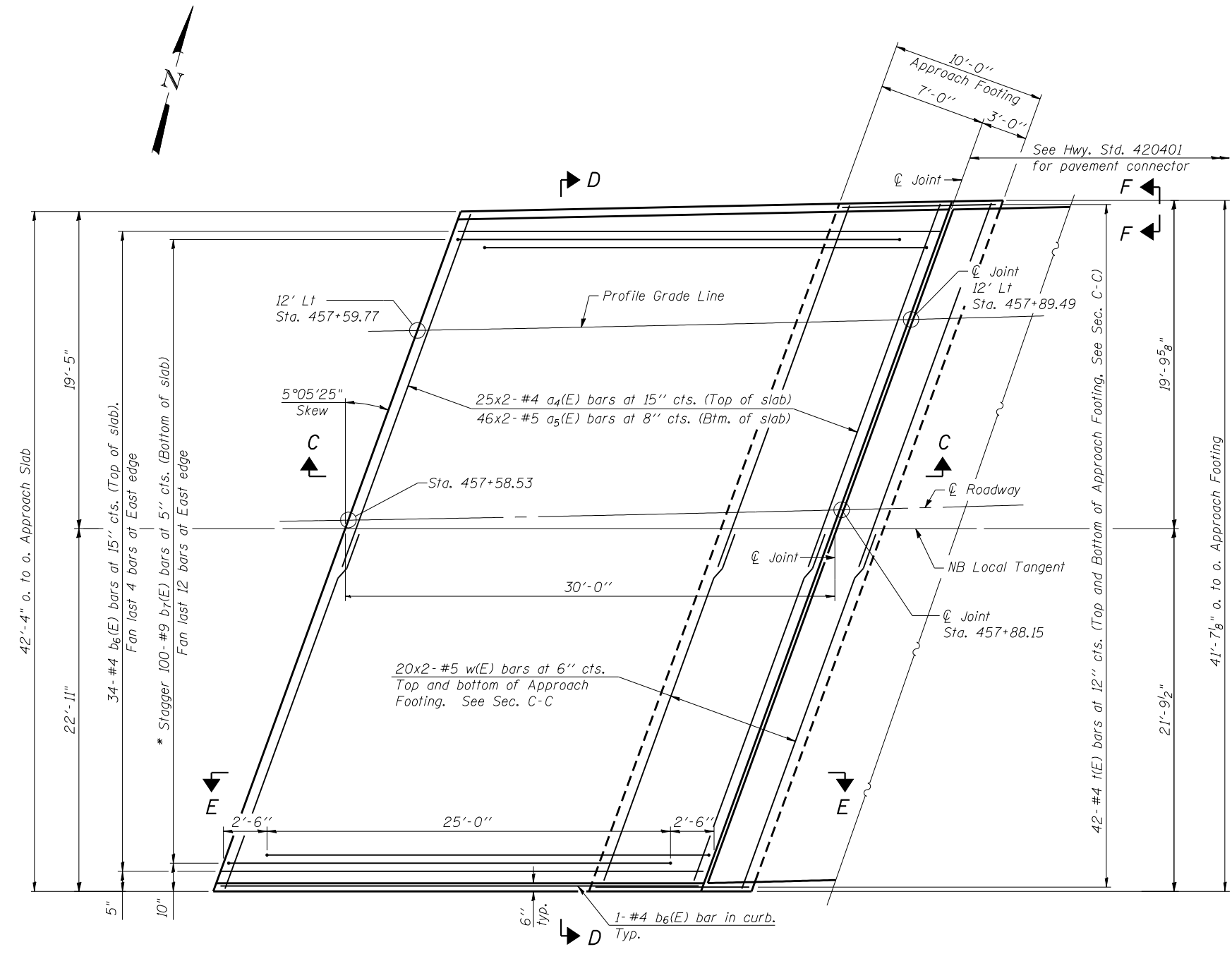


Notes:
 See sheet 23 of 39 for Sections C-C & D-D and View E-E.
 a₄(E) thru a₅(E) bar spacings measured along Local Tangent.
 The joint opening shall be determined per Article 520.04 except that on jointless structures, the distance described as the bridge length between the nearest fixed bearings each way from the joint shall be taken as half the bridge length plus the approach slab length. The minimum dimension shall be 1 1/2' for installation purposes.



Angle Preformed Joint Seal at 45° at curbs when req'd for drainage.

MIN. BAR LAP
 #4 bars 2'-4"
 #5 bars 2'-7"



* Tilt #9 b₇(E) bars as required to maintain clearance.

BA-L 7-1-10

| | | | |
|--|-------------------|-------------------|-----------|
| FILE NAME = | USER NAME = .MML. | DESIGNED - GJB | REVISED - |
| ...\\0540065-0065-72e11-922-nr-appro-slab-nb-details.dgn | | CHECKED - MCB/RKM | REVISED - |
| | | DRAWN - CFC/MML | REVISED - |
| | | CHECKED - MCB/GJB | REVISED - |
| PLOT SCALE = 0:2.000000 '1' / IN. | | | |
| PLOT DATE = 3/18/2013 | | | |

**STATE OF ILLINOIS
 DEPARTMENT OF TRANSPORTATION**

**BRIDGE NORTH APPROACH SLAB DETAILS (NORTH BOUND STRUCTURE)
 STRUCTURE NO. 054-0065 (N.B.) & 054-0066 (S.B.)**

SHEET NO. 22 OF 39 SHEETS

CB Coombe-Bloxdorf P.C.
 - CIVIL ENGINEERS -
 - STRUCTURAL ENGINEERS -
 - LAND SURVEYORS -
 Design Firm License No. 184-002703

| F.A.I. RTE. | SECTION | COUNTY | TOTAL SHEETS | SHEET NO. |
|-------------|-----------------------|--------|--------------|--------------------|
| 55 | D6 LOGAN CO BR 2011-1 | LOGAN | 429 | 345 |
| | | | | CONTRACT NO. 72E11 |

ILLINOIS FED. AID PROJECT