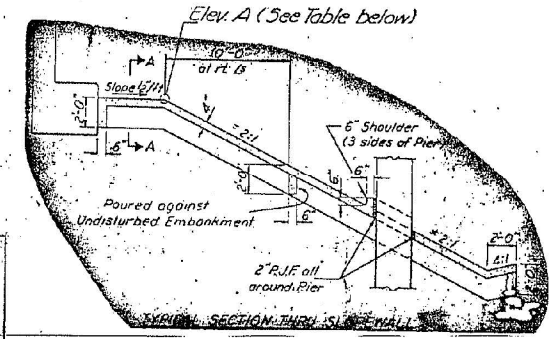
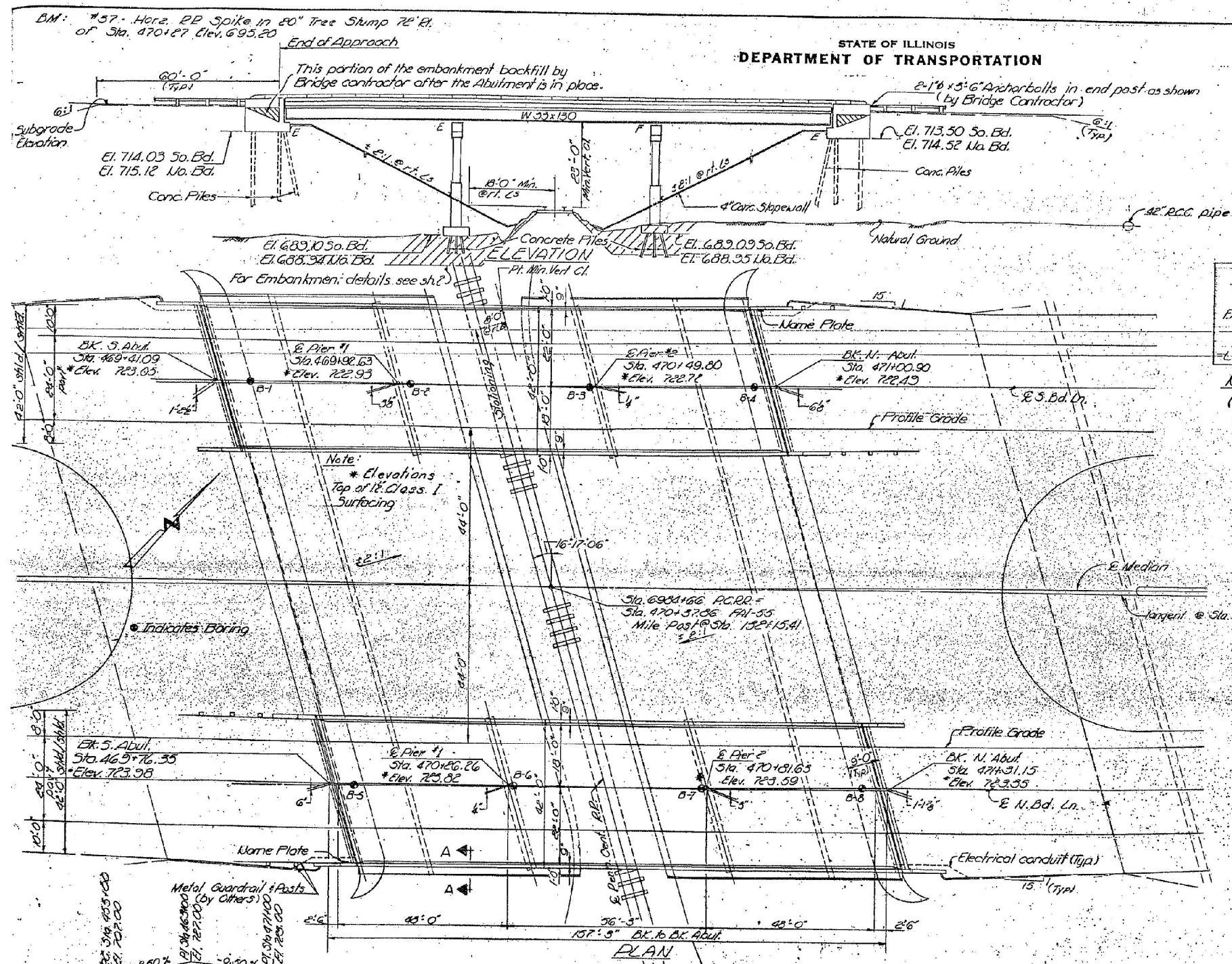


STATE OF ILLINOIS
DEPARTMENT OF TRANSPORTATION

PROJECT NO.	SECTION	COUNTY	TOTAL SHEETS	SHEET NO.
54-6VB	LOGAN	40	8	21



P.C. R.R. BY BUILT 19 BY STATE OF ILLINOIS FAI. RT. 55 SEC. 54-6VB F.A. PROJ. 55-4(59) STATION 470+37.86 LOADINGS HS 20 & ALT.

NAME PLATE (See Std. E115)

Note: Those spans which have railroad signal or communication lines under them, shall have the deck drains spaced to clear the cross arms of these wire signal poles as determined in the field by the engineer. No deck drains shall be permitted in span over railroad tracks.

BERM ELEVATIONS

Location	Elev. A
West Water Table At South Abut.	716.69
of South Bd. Bridge At North Abut.	716.16
East Water Table At South Abut.	718.18
of North Bd. Bridge At North Abut.	717.56

PROFILE ALONG PENN. CENTRAL RAILROAD

Stations

HORIZONTAL CURVE DATA

PI. Sta. 466+18.38
D = 35°48'09"
D = 1°-30'
T = 1253.03
P = 3019.72
L = 2326.83
E = 194.33
S.E. = 0.02211
S.E. attained Sta. 452K51 to 454151
Sta. 470+05 to Sta. 477+05



DESIGNED G.K. Rao

EXAMINED [Signature]

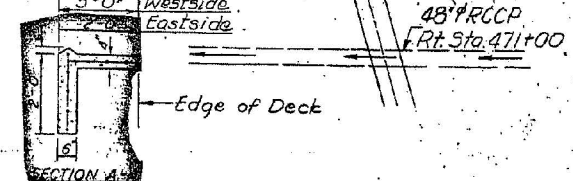
CHECKED D.A. Rye

DRAWN daryl.williams sr.

CHECKED D.A. Rye

APPROVED [Signature]

DIRECTOR OF HIGHWAYS



DESIGN STRESSES

$f_c = 1200$ psi (Deck Slab)

$f_c = 1400$ psi (Curb, Parapet, Sub.)

$f_s = 20,000$ psi (Reinf.)

$f_s = 20,000$ psi (Struct.)

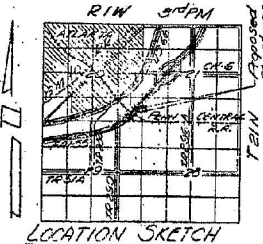
$V_c = 75$ psi (Figs.)

$n = 10$

Allowable Deflection = $l/1000$

Allow 25% future W.S.

LOADINGS HS 20 & ALT.



Rev. 1-26-76 F.M.

05329

FOR INFORMATION ONLY



JOB = 2236.10
FILE NAME = 054-0067-0068-72E11-REM.dgn
PLOT SCALE = 20.0000' / IN.
PLOT DATE = 3/18/2013

DESIGNED - NAK
DRAWN - TJD
CHECKED - NAK
DATE - 1/30/2012

REVISED -
REVISED -
REVISED -
REVISED -

STATE OF ILLINOIS
DEPARTMENT OF TRANSPORTATION

EXISTING SN 054-0067 & 0068

SCALE: SHEET NO. 1 OF 12 SHEETS STA. TO STA.

F.A.I. RTE.	SECTION	COUNTY	TOTAL SHEETS	SHEET NO.
55	D6 LOGAN CO BR 2011-1	LOGAN	429	363
CONTRACT NO. 72E11				