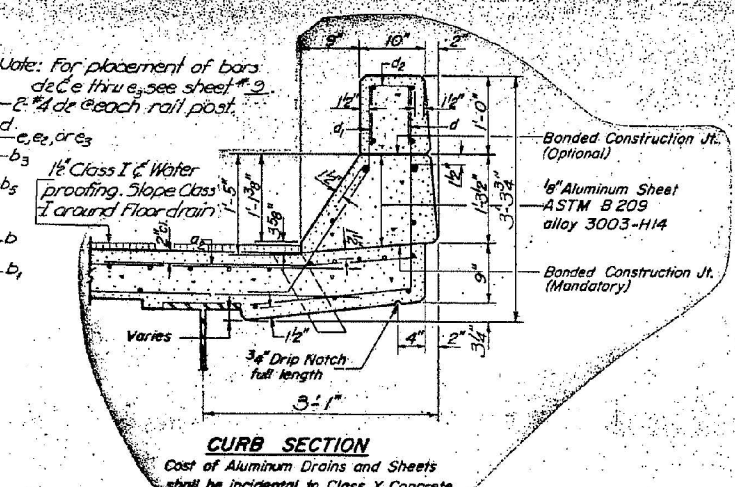
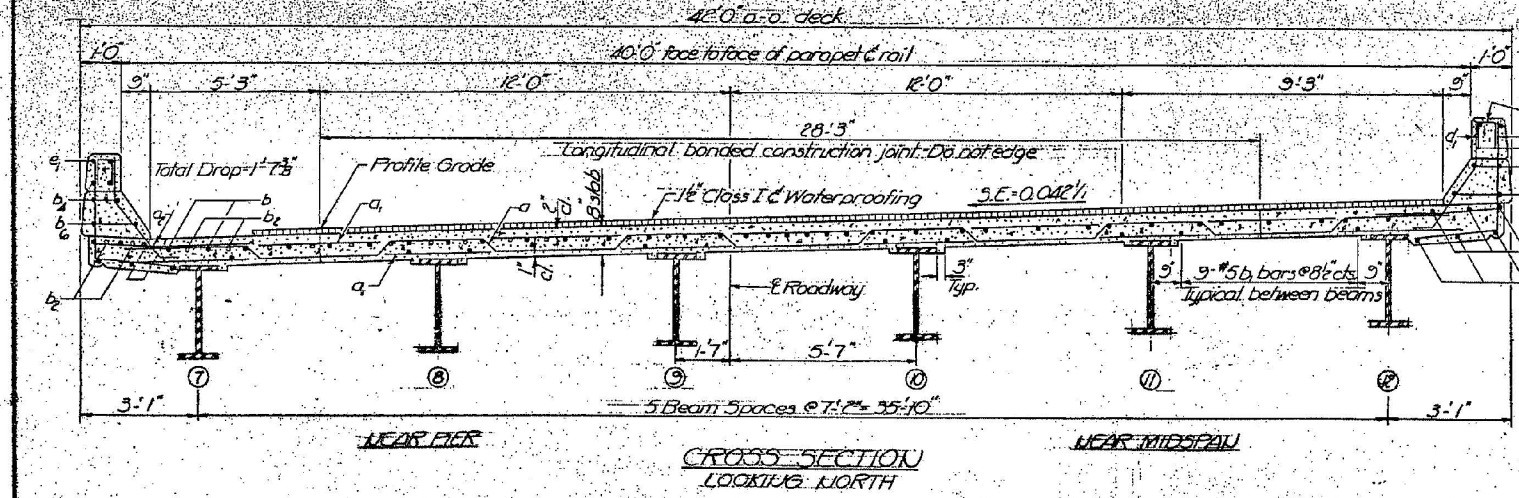
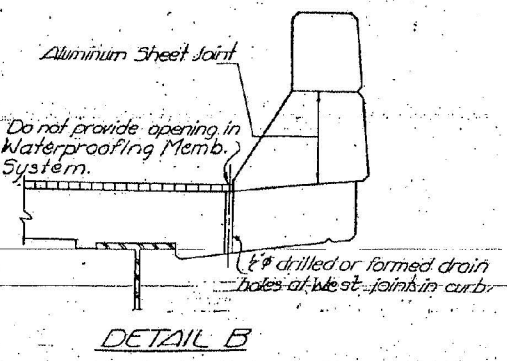
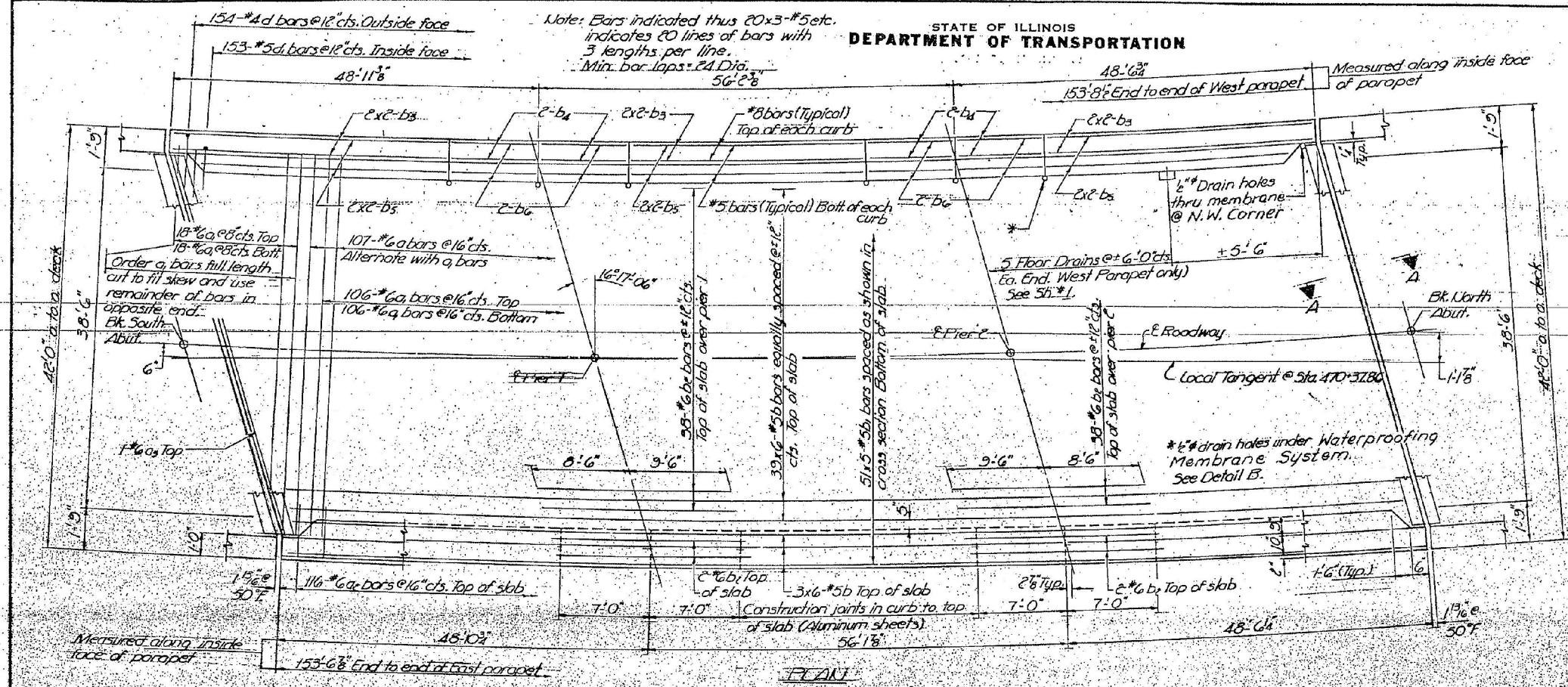


STATE OF ILLINOIS  
DEPARTMENT OF TRANSPORTATION

ROUTE NO.	SECTION	COUNTY	TOTAL SHEETS	SHEET NO.	SHEETS
55	54-6VB	LOGAN	40	15	24



**BILL OF MATERIAL**

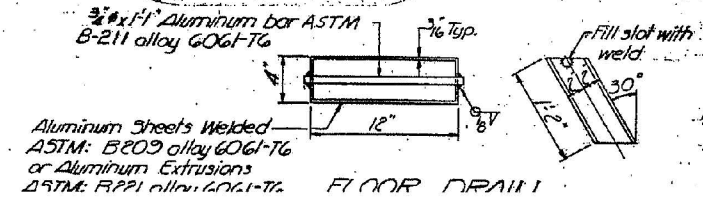
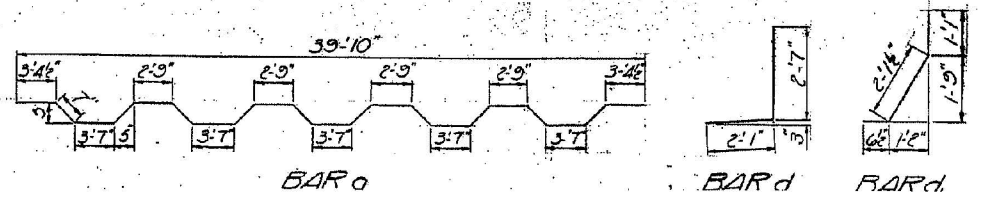
Bar	No.	Size	Length	Shape
a	107	#6	41'-6"	~
a1	248	#6	40'-0"	~
a2	232	#6	4'-0"	~
a3	2	#6	42'-0"	~
b	270	#5	26'-9"	~
b1	255	#5	32'-0"	~
b2	84	#6	18'-0"	~
b3	24	#8	22'-0"	~
b4	16	#8	6'-9"	~
b5	24	#5	21'-9"	~
b6	16	#5	6'-9"	~
d	303	#4	4'-8"	J
d1	306	#5	3'-9"	J
Reinforcement Bars (lbs. 45920)				
Class X Concrete (cu yds. 191.3)				
Prefabricated Jt. sealer (lin. ft. 88.5)				

DESIGNED G.K. Rao  
CHECKED D.A. Rao  
DRAWN J.D.  
CHECKED D.A. Rao

EXAMINED  
PASSED  
APPROVED

SEPT 16 1971

DIRECTOR OF HIGHWAYS



**SUPERSTRUCTURE**  
NORTH BOUND LANES  
FAL RT. 55 SEC. 54-6VB  
LOGAN COUNTY  
STA. 470+37.86

**FOR INFORMATION ONLY**



JOB = 2236.10  
FILE NAME = 054-0067-0068-72E11-REM.dgn  
PLOT SCALE = 20.0000' / IN.  
PLOT DATE = 3/18/2013

DESIGNED - NAK  
DRAWN - TJD  
CHECKED - NAK  
DATE - 1/30/2012

REVISED -  
REVISED -  
REVISED -  
REVISED -

STATE OF ILLINOIS  
DEPARTMENT OF TRANSPORTATION

EXISTING SN 054-0067 & 0068

SCALE: SHEET NO. 3 OF 12 SHEETS STA. TO STA.

F.A.I. RTE.	SECTION	COUNTY	TOTAL SHEETS	SHEET NO.
55	D6 LOGAN CO BR 2011-1	LOGAN	429	365
CONTRACT NO. 72E11			FED. ROAD DIST. NO. [ILLINOIS] FED. AID PROJECT	